

LLAMA 2 Hackathon

Human Emulation System



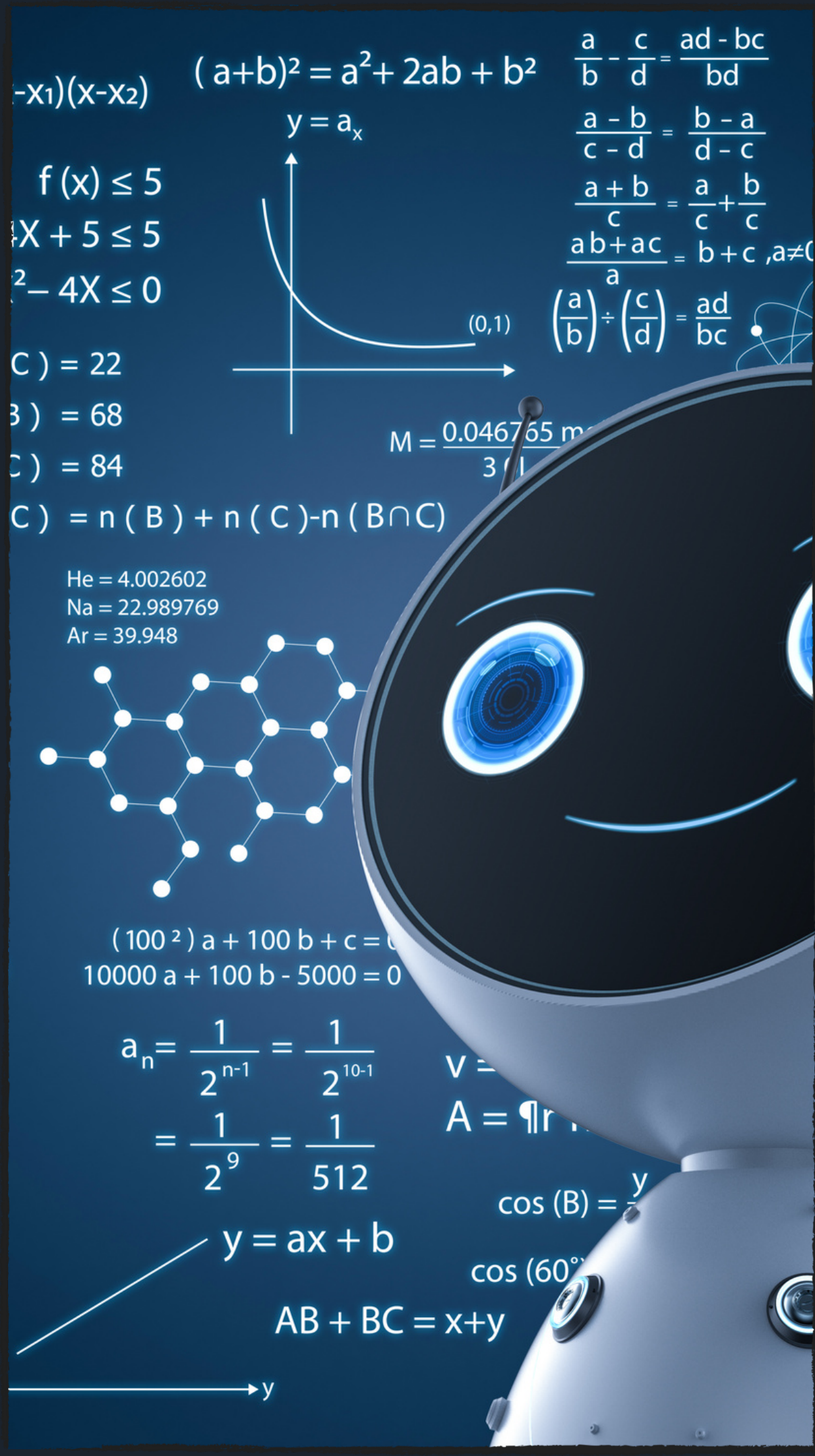
 Team Mind Interfaces

Introduction

A Glimpse into Cognitive AI Innovation

We invite you to delve into a paradigm-shifting concept that melds artificial intelligence with human-like cognition. Imagine a robot with the ability to think both logically and creatively, just like a human brain. Our presentation is a journey through this innovation, as we explore how our project bridges the gap between AI and human thought processes.





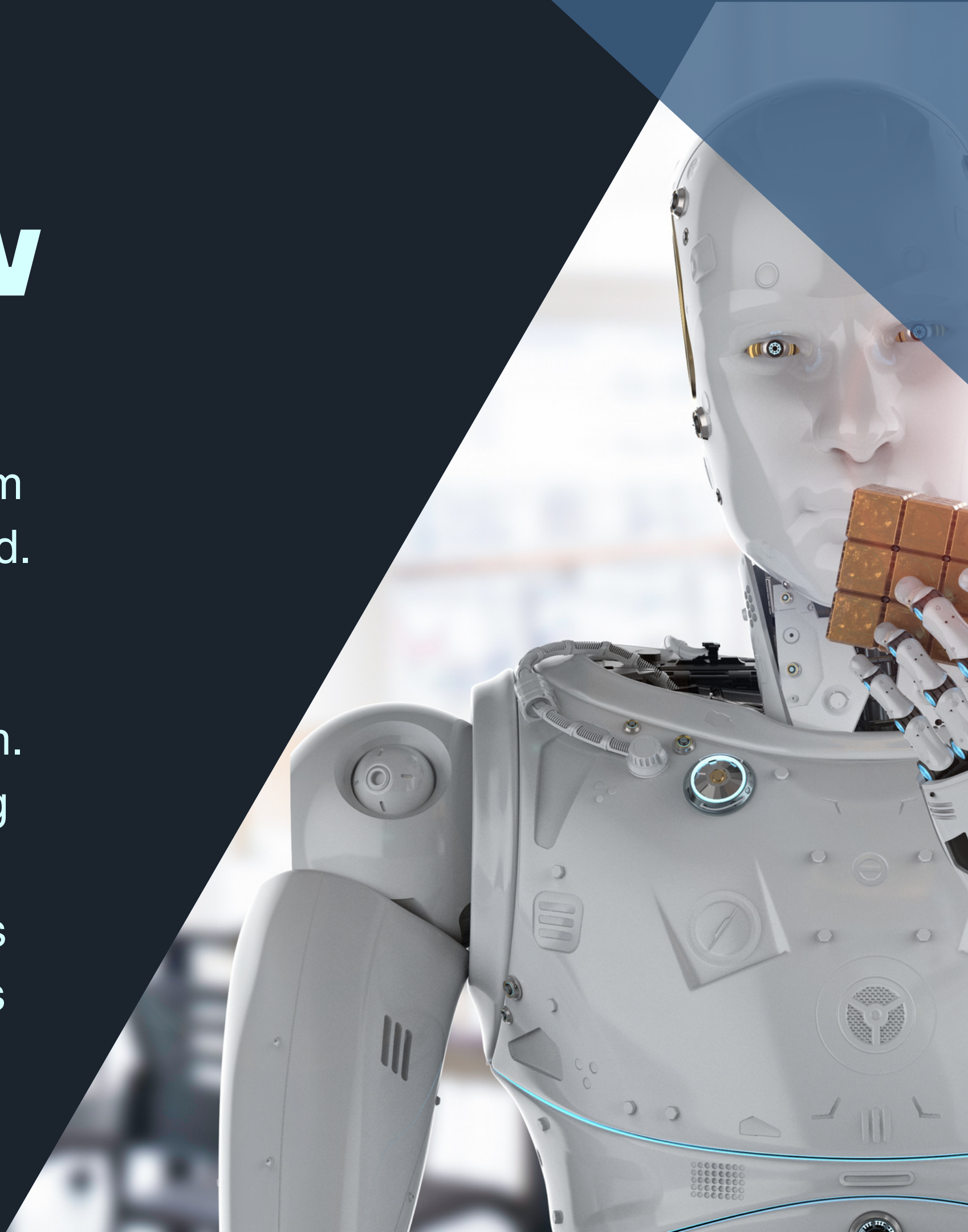
Problem Statement

The conundrum we address is the compartmentalization of AI capabilities – logic-driven problem-solving on one hand and creative expression on the other. Our ambition is to infuse AI with both traits simultaneously, enabling it to mimic the dichotomous thinking pattern of the human brain. Join us as we tackle the challenge of fostering creativity within AI, and discover the transformative potential of a system that balances logical reasoning and artistic imagination.

Solution Overview

Harmonizing Logic and Creativity

Our visionary solution centers on creating an AI system that mirrors the cognitive processes of the human mind. This entails harnessing the prowess of two Large Language Models (LLMs), where one specializes in analytical prowess and the other in creative symbolism. To synchronize these facets, we introduce a mediating model – the conductor of this cognitive orchestra. On the horizon is a user-friendly web interface that unveils the AI's dual thinking process, inviting users to witness AI's journey from logic to creativity.



Technology

The Engine of Cognitive Fusion



Models

We've harnessed the capabilities of two Large Language Models, each meticulously designed to emulate a facet of human cognition. One LLM embodies analytical rigor, while the other embraces imaginative creativity. The magic happens through a mediating model, orchestrating a harmonious dance between these cognitive symphonies.

CodeLlama-7B-Instruct-GPTQ

Orca_Mini_v3_13B-GPTQ

LLAMA2-13b-Chat

Business Model

Unveiling Value in AI Innovation

We envision multiple revenue streams stemming from our AI-powered creation. Industries seeking innovative solutions, enhanced AI capabilities via subscription models, and strategic collaborations with creative agencies and educational institutions are avenues we intend to explore.

[Subscriptions](#)

[Partnerships](#)

[Advertising](#)

[Back to Agenda](#)

Conclusion

Our Human Emulation System represents a leap into a future where AI mirrors human cognition. This project isn't just about code; it's about creating an AI that thinks, reasons, and imagines much like we do. By merging logical prowess and artistic insight, we open doors to AI-driven creativity and problem-solving that's unprecedented. This isn't just innovation; it's a catalyst for AI's journey towards becoming a true partner in human-like thinking.

Thank You