

# ELIZA INSTRUCT FINE-TUNING

TEAM MIND INTERFACES



# PROJECT OBJECTIVES

Recreate  
ELIZA  
using  
Python.

Generate a  
dataset using  
the ELIZA  
model.

Train a  
modern LLM  
on the ELIZA  
dataset.

# MEET ELIZA

Joseph Weizenbaum named the program "ELIZA" as a nod to Eliza Doolittle, a character in George Bernard Shaw's play "Pygmalion."





# KNOWLEDGE TRANSFER

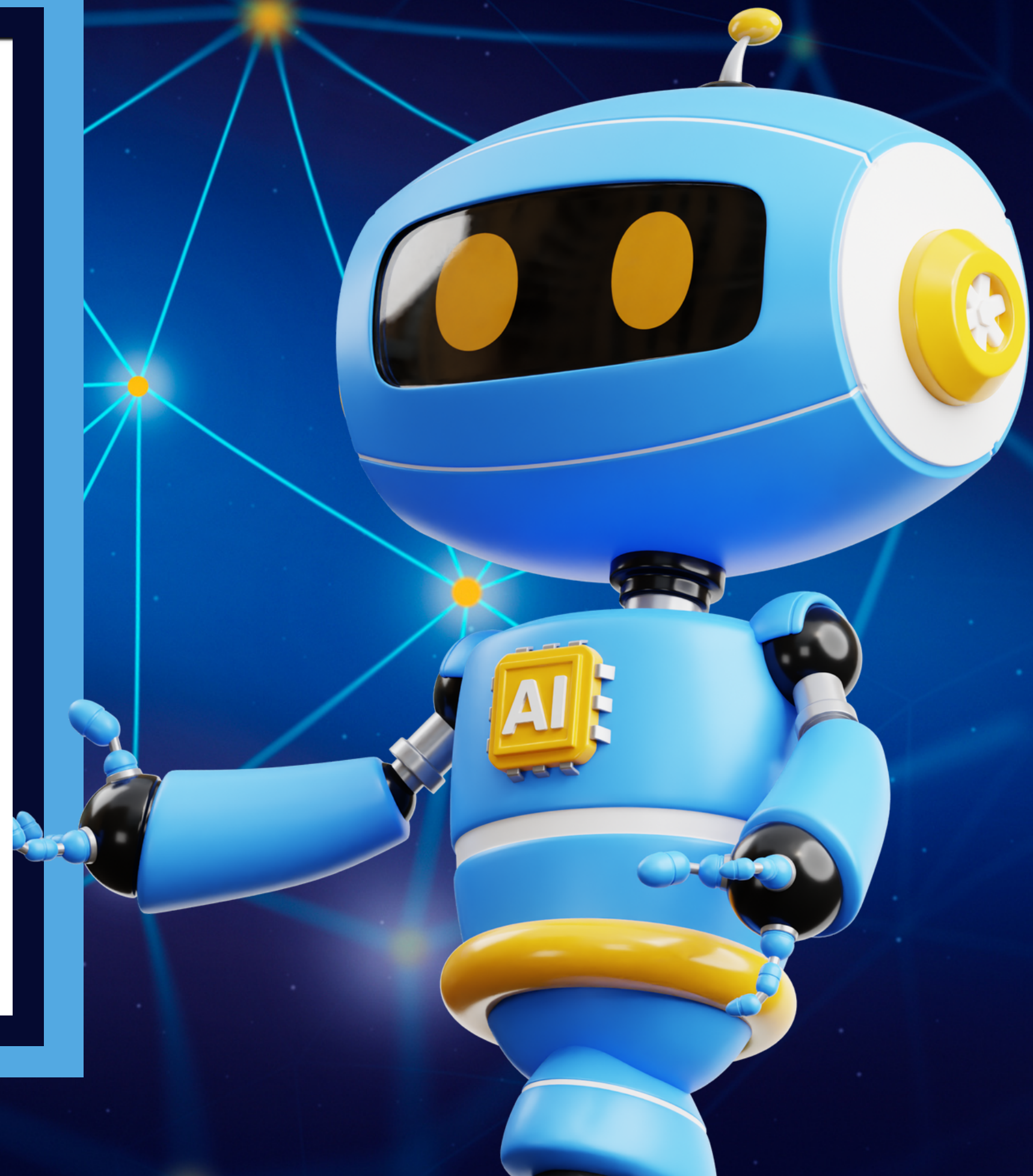
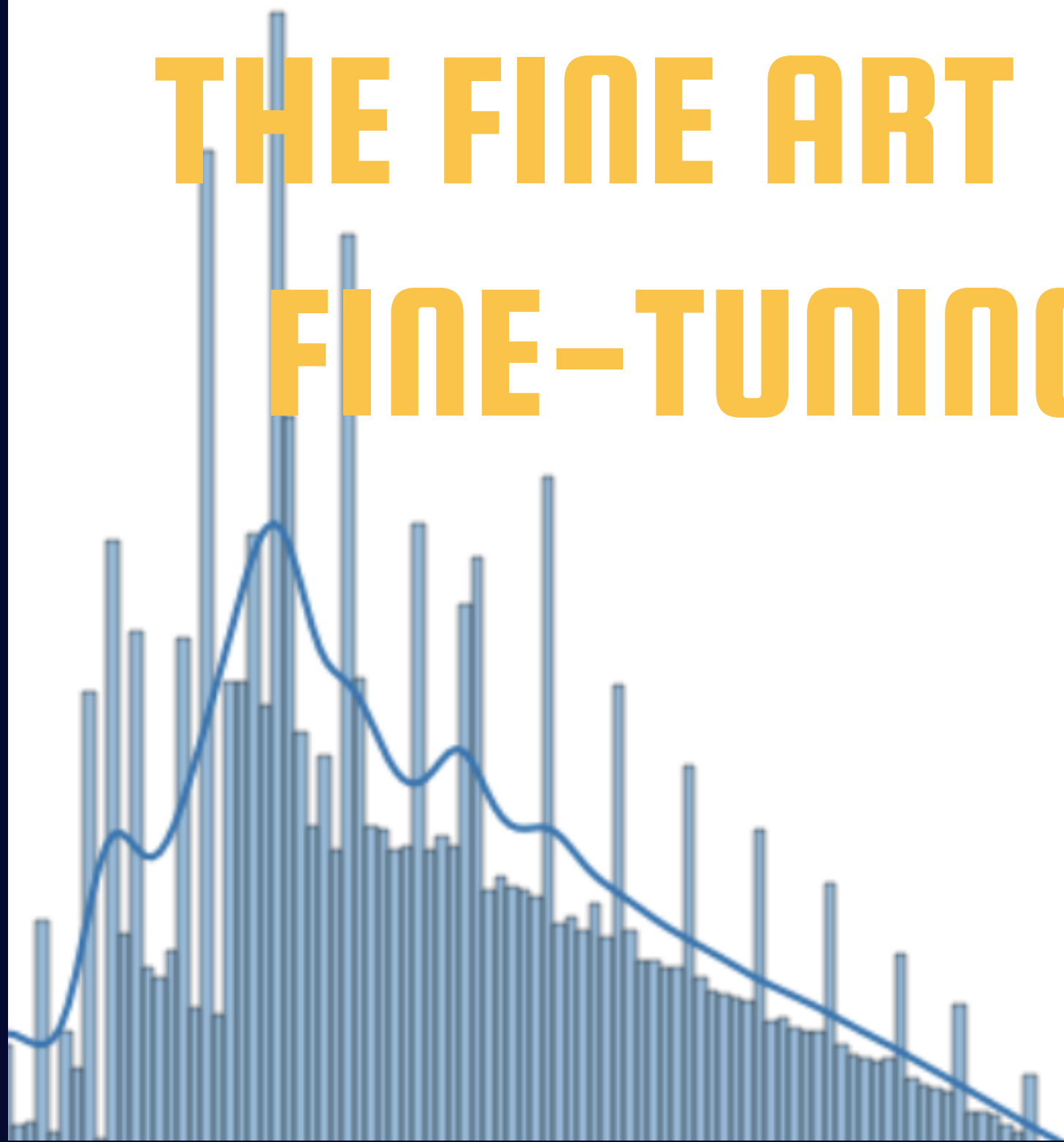
Eliza is a Cockney flower girl who learns to speak like a duchess under the tutelage of Prof. Henry Higgins.

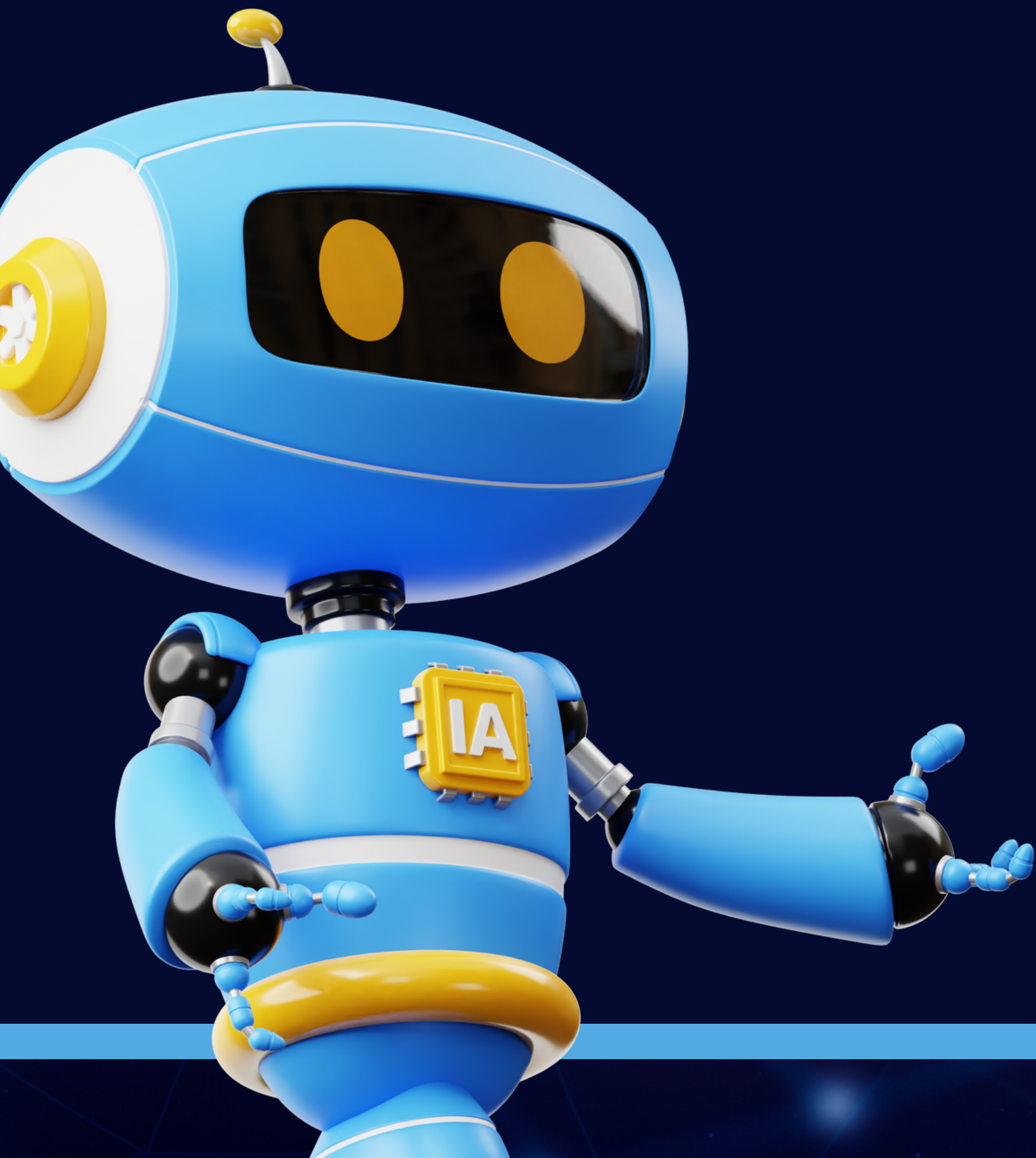


# THE ELIZA EFFECT

The story serves as a metaphor for the apparent transformation that occurs when a machine, like the ELIZA program, takes on the role of a Rogerian psychotherapist.

# THE FINE ART OF FINE-TUNING





# EVOLUTION OF INSTRUCT DATASET

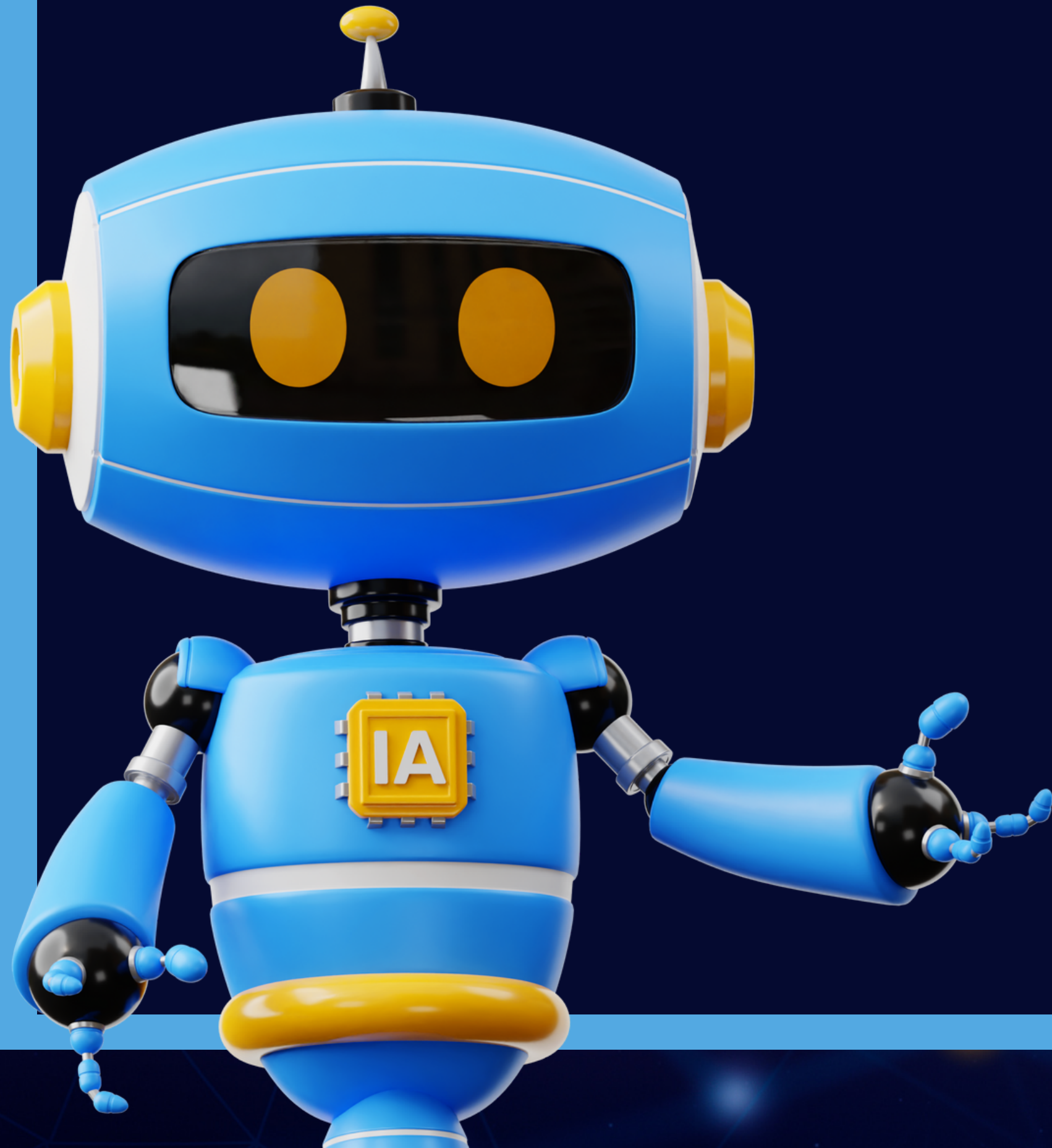
<https://huggingface.co/datasets/MIND-INTERFACES/ELIZA-EVOL-INSTRUCT/>

# TRAINING TIME, GO!

With AutoGPTQ  
quantizing our models  
for fast and effective  
training times is easy.







# ANALYZE THE RESULTS

Once all the training is completed and the results are recorded, we analyze our data and compare benchmarks.



# ELIZA BASED FINE-TUNING

We aim to refine this technique to produce a Tiny Language Model capable of communicating as effectively as it's larger counterparts.

**THANK YOU!**

I hope we all learn  
something new today!

