

Customer
CHATBOT
API

By Blazzdev Team

LIST OF CONTENTS

Here we have the content that are we going to be seeing in this presentation

- 03 TEAM MEMBERS**
- 04 PROBLEM**
- 05 INNOVATIVE TECHNOLOGIES**
- 06 SHOWCASE DEMONSTRATION**
- 07 TAM AND SAM MARKET SIZE ANALISYS**
- 08 REVENUE STREAMS**
- 09 ANALYSIS COMPETITORS**
- 10 NEXT STEPS TO FOLLOW**
- 11 CONCLUSION**

TEAM MEMBERS



IA-Programming
backend designer



blazzbyte
frontend designer

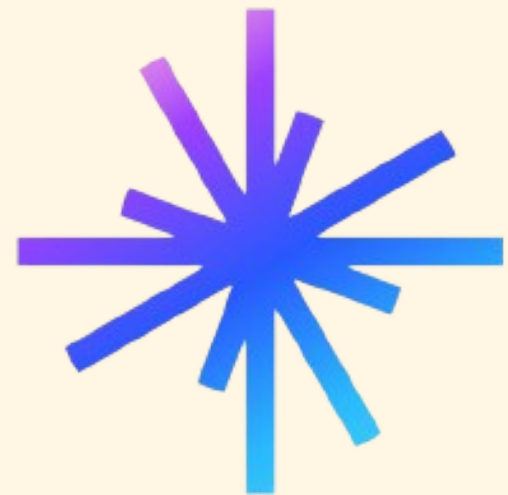
PROBLEM

Our focus is on addressing a crucial problem in the e-commerce sector: the need for a more user-friendly and intuitive shopping experience and the facility of implementation to any shop store. The solution? The Customer Chatbot API.



INNOVATIVE TECHNOLOGIES

- **Google Cloud VertexAI:** Powers the backend, providing robust infrastructure for seamless performance, with all the AI models available.
- **Milvus/Zilliz:** Enables advanced VectorDB functionality, crucial for efficient product indexing, for both images and text.
- **TruLens from TruEra:** Contributes to intelligent responses by processing user queries, letting us upgrade the performance in the development process.



zilliz



trulens



LlamaIndex



FastAPI

SHOWCASE DEMONSTRATION

A demonstration is worth a thousand words. Let's showcase a brief screen recording demonstrating the ease and effectiveness of user interaction with our Customer Chatbot.

TAM AND SAM MARKET SIZE ANALISYS

Our market scope extends to the vast realm of e-commerce, targeting a broad audience seeking a personalized shopping experience. The SAM is further refined, focusing on users specifically interested in the Zara brand for demonstration in this opportunity.

But because our project is an API makes easy to implement to any store type of business.



REVENUE STREAMS

Our revenue streams include potential collaborations with e-commerce platforms, licensing the chatbot technology, and offering premium features for enhanced user experiences for all the big brands that are out there and need a more fluid user experience for his e-commerce.



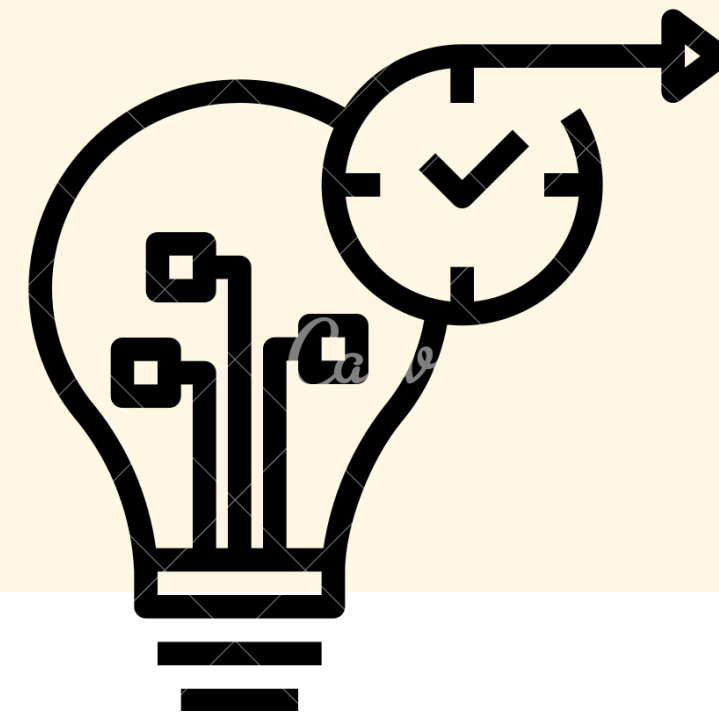
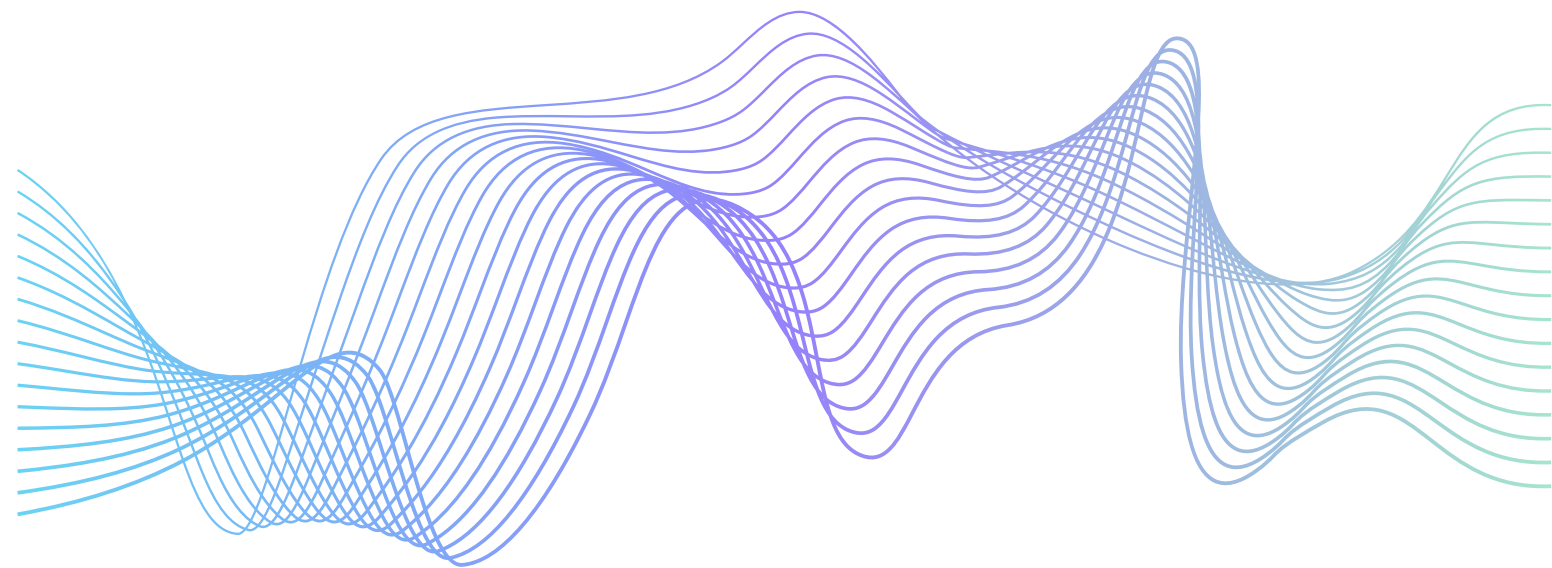
ANALYSIS COMPETITORS

While numerous chatbots exist, what sets ours apart is the seamless integration of advanced technologies like Milvus/Zilliz and VertexAI. This unique selling proposition positions us as leaders in providing a sophisticated and intelligent customer chatbot solution.



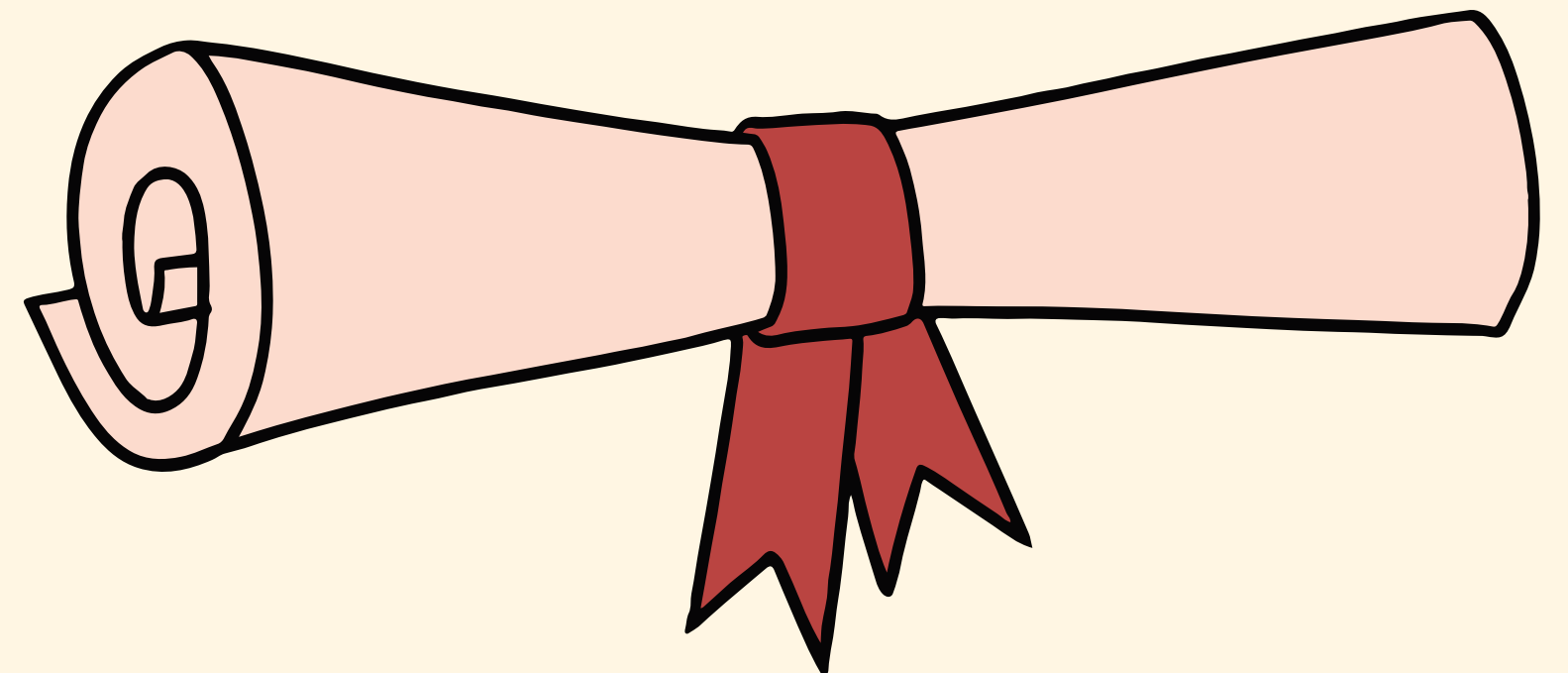
NEXT STEPS TO FOLLOW

The future looks promising as we envision scaling our Customer Chatbot API to cater to a broader audience. We anticipate making a significant impact on the e-commerce landscape by continually enhancing the application's capabilities and intelligence.



CONCLUSION

In conclusion, our Customer Chatbot API is not just a solution; it's a game-changer in the world of e-commerce in all the platforms. We invite you to join us on this exciting journey of revolutionizing user experiences, one chat at a time.



THANK YOU FOR YOUR ATTENTION

I hope that you found the presentation both informative and engaging. If you have any further questions or feedback, please feel free to reach out to us. Thank you, and have a great day.

blazzbyte

nrwrnn@gmail.com

IA-Programming

sm4rt.j.r@gmail.com