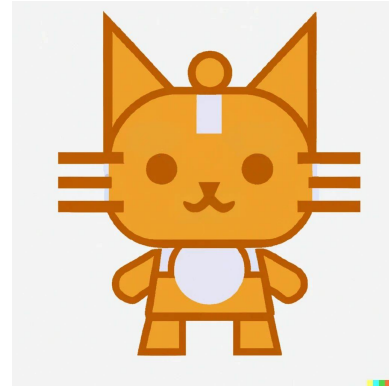


# SIMBA:

# Your Digital Learning Companion

**Empowering Education  
Through Technology**



# Educational Challenges

## 01

### Tracking

In hybrid scenarios, is **difficult to track** and understand the student's learning process

## 02

### Engaging

Actively **engaging students** remains a complex, specially with lack of physical presence

# Educational Challenges



**Teaching  
Strategies**

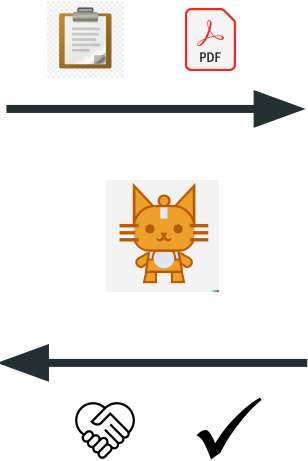


**Students'  
Needs**

# SIMBA Overview



**Teaching Strategies**

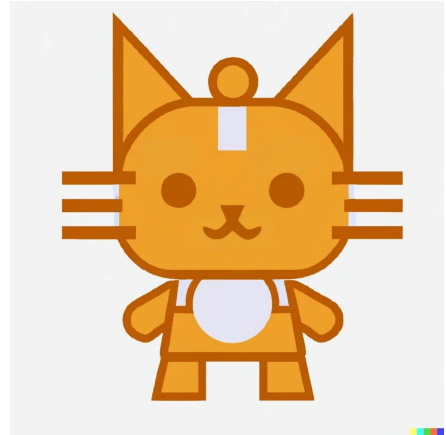


In real time!

**Students' Needs**

# SIMBA features

- **Interactive learning**
- **Customized Student Support**



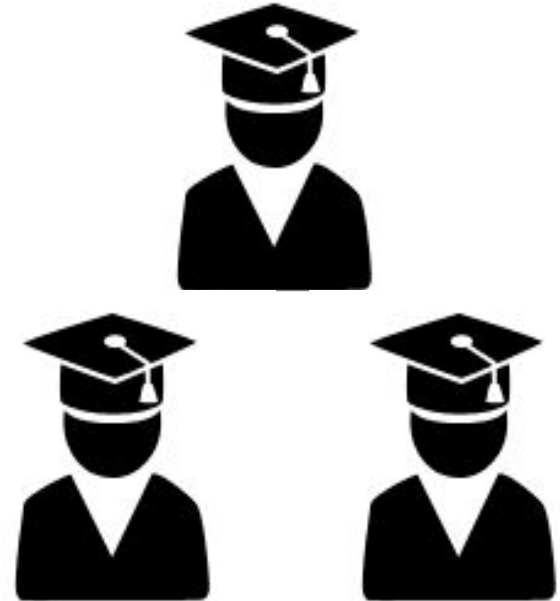
# For Teachers

- **Understanding of their students' needs and progress**
- **Create customized activities**



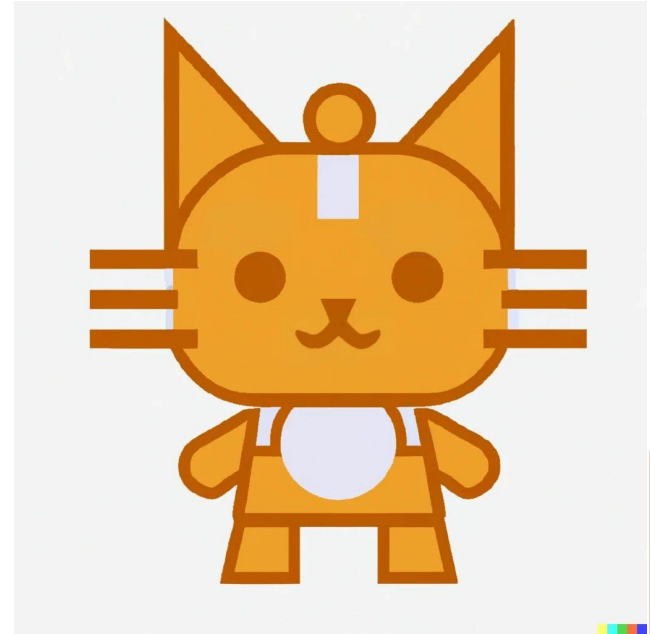
# For Students

- **Personalized learning experience**
- **24/7 access to educational support**



# DEMO

- **Interactive learning**
- **Customized Student Support**



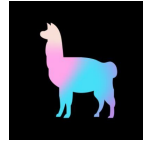


# Key Tech Tools Utilized

The Gemini logo features the word "Gemini" in a blue, sans-serif font. A small, four-pointed star is positioned above the letter "i".

**Gemini**

LLM to communicate with  
the users



**Llama Index**

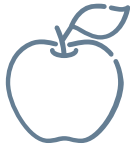
Indexing documents to  
provide relevant context

The truera logo features the word "truera" in a dark teal, lowercase, sans-serif font. The letter "t" has a small dot above it.

**Truera**

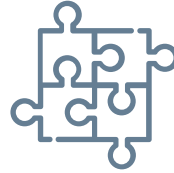
Sharing important metrics  
with the user, to let them  
know if the answers are  
reliable

# Business model



## Formal education

SIMBA could be used by educational institutions (K-12 and Higher ED.)



## Generalizable

SIMBA can fit easily in several educational contexts



## Remote/Hybrid

Support connection in courses with remote-first strategies

# SIMBA:

# Your Digital Learning Companion

**Empowering Education  
Through Technology**

