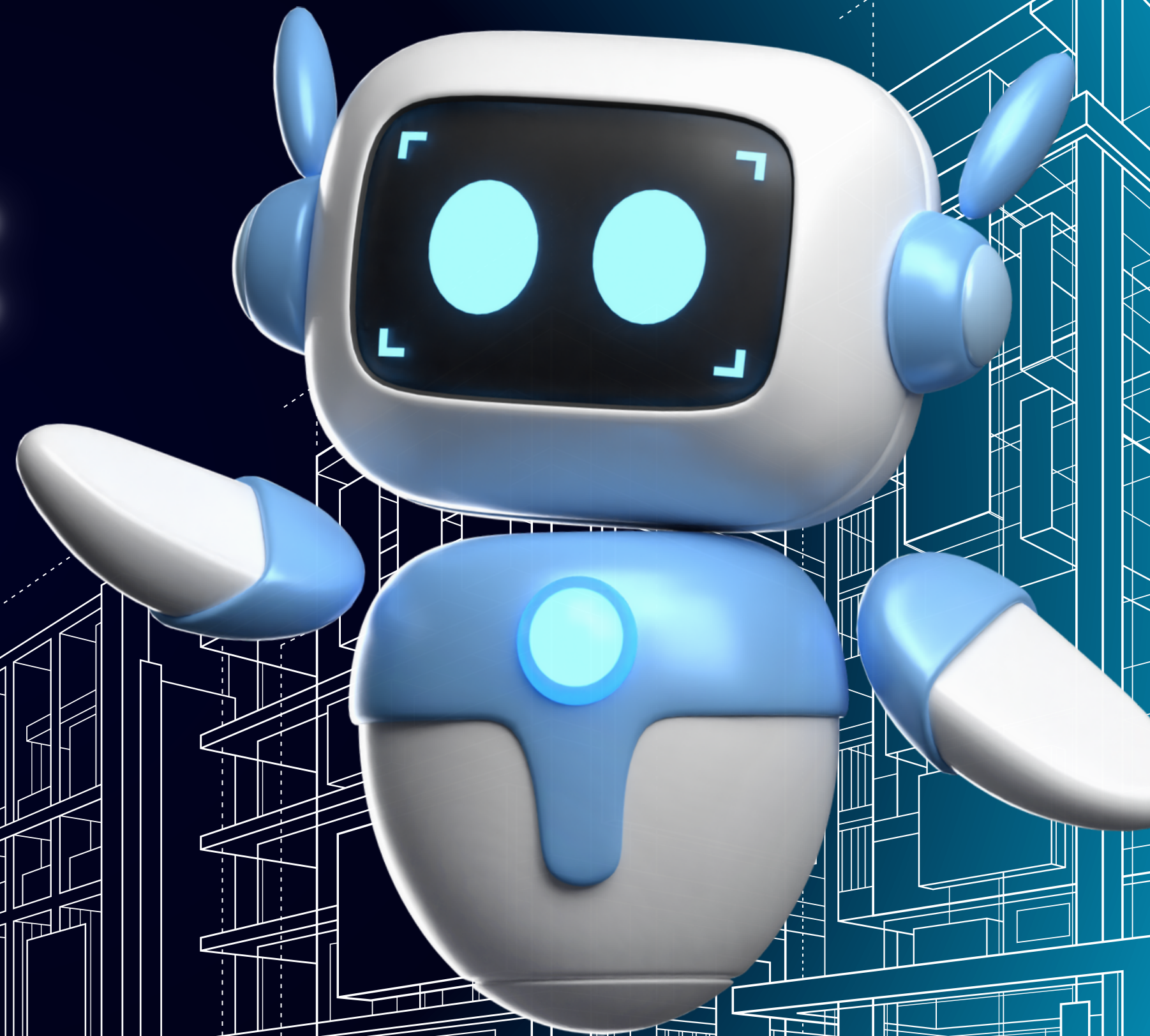


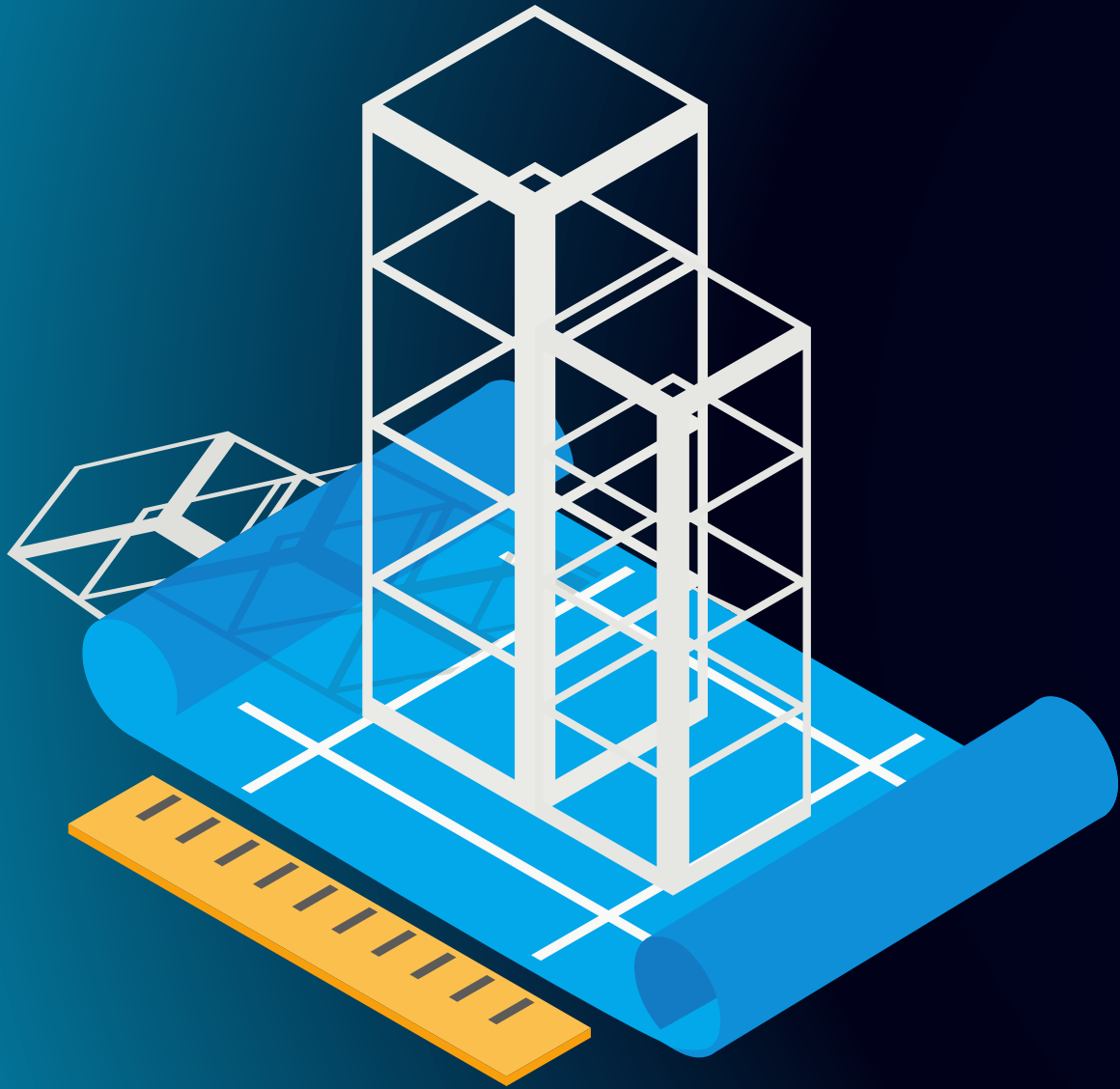
# ARCHITEX-AI

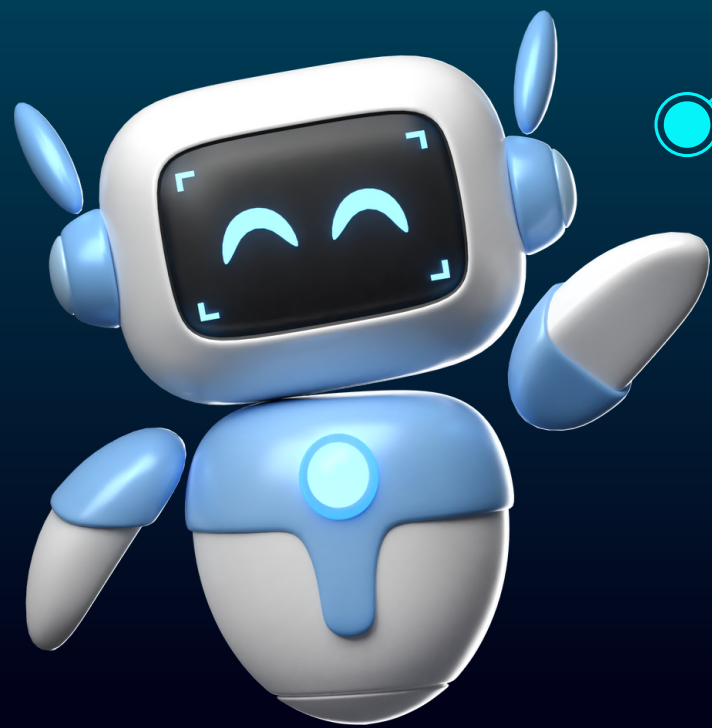
Building tomorrow's Homes  
with 3D Structure



# CONTENTS

- ① Objectives
- ② Challenges
- ③ SWOT analysis
- ④ Meet the Team
- ⑤ Wait for it!

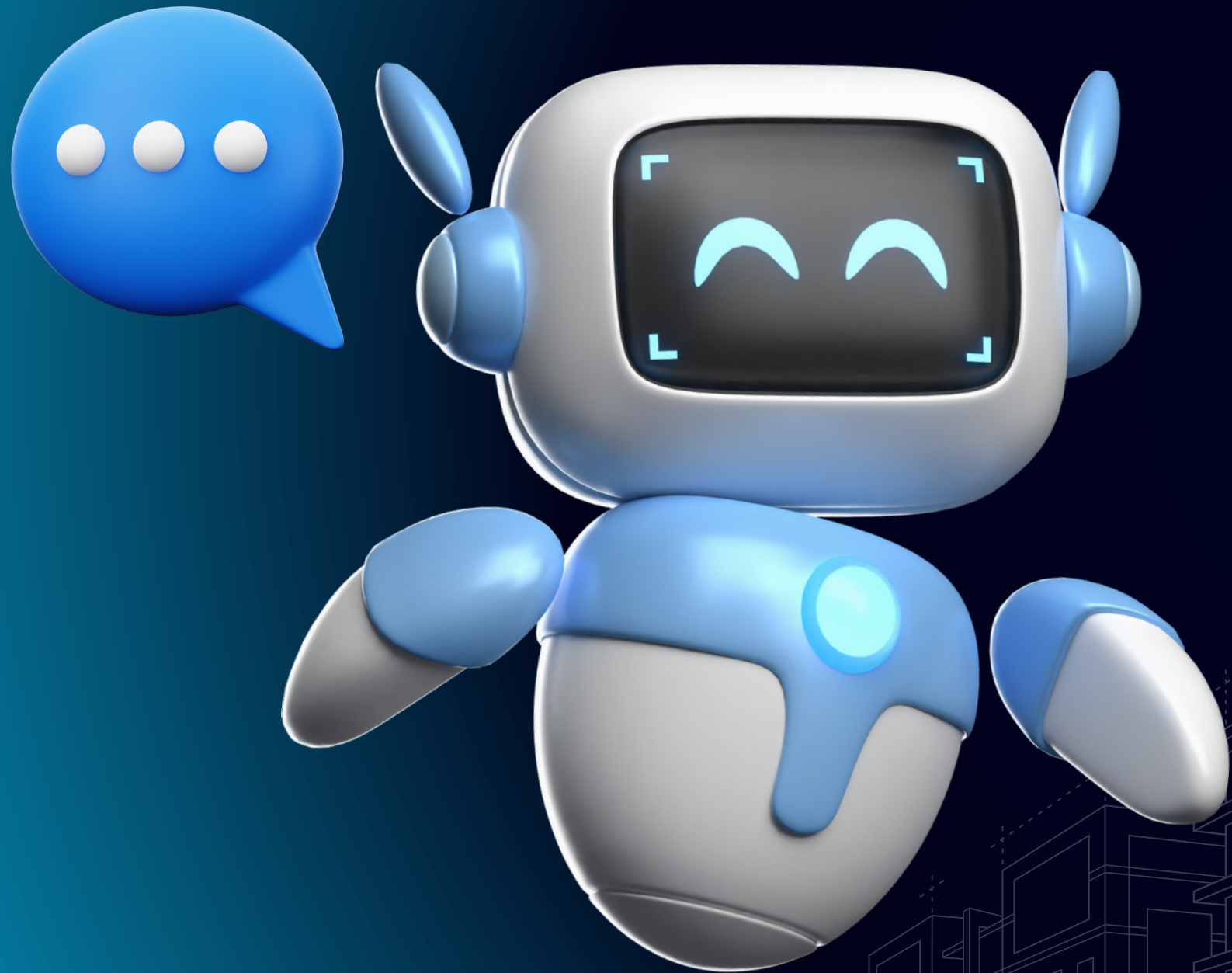




## OBJECTIVE

Our primary goal is to provide timely and accurate guidance, and assistance to the users seeking information about house construction through prompt or picture / both

# TOOL & TECHNOLOGY



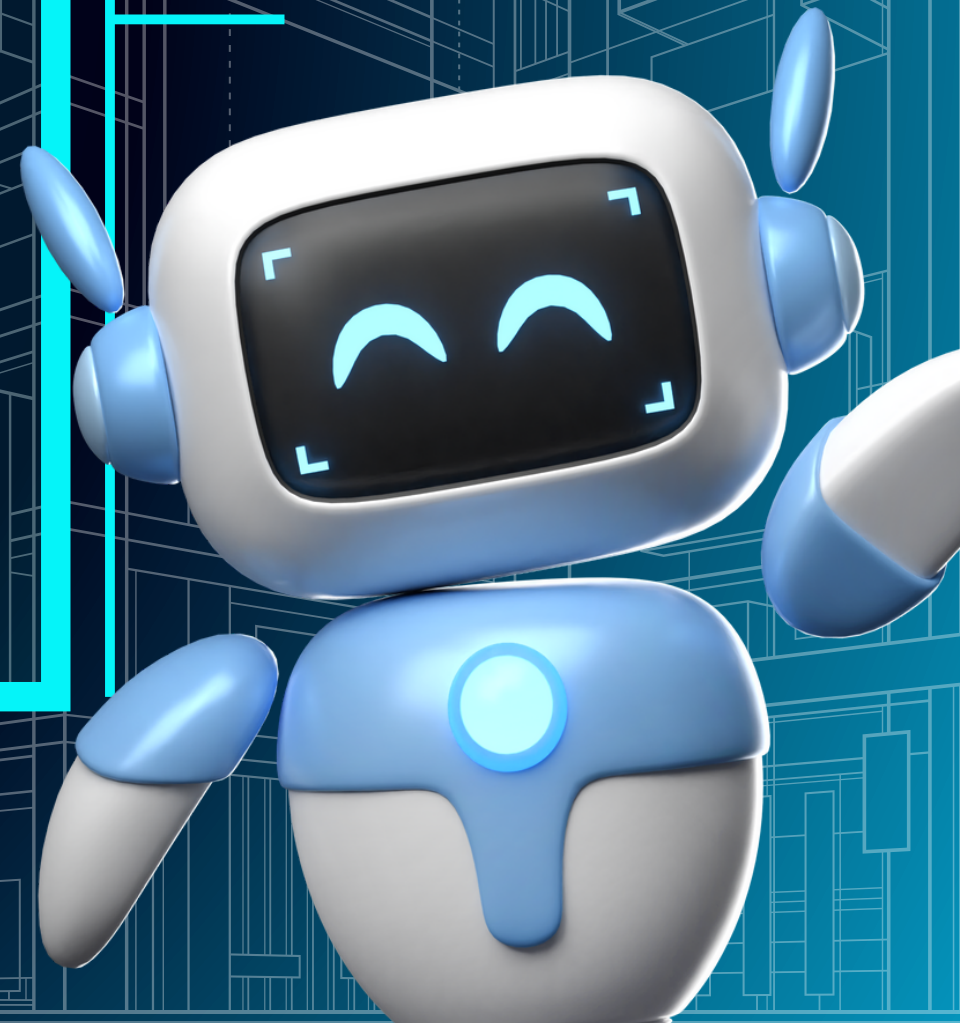
GPT4 TURBO, GPT4 VISION &  
DALLE

HTML, CSS, PYTHON.

BOOTSTRAP AND DJANGO

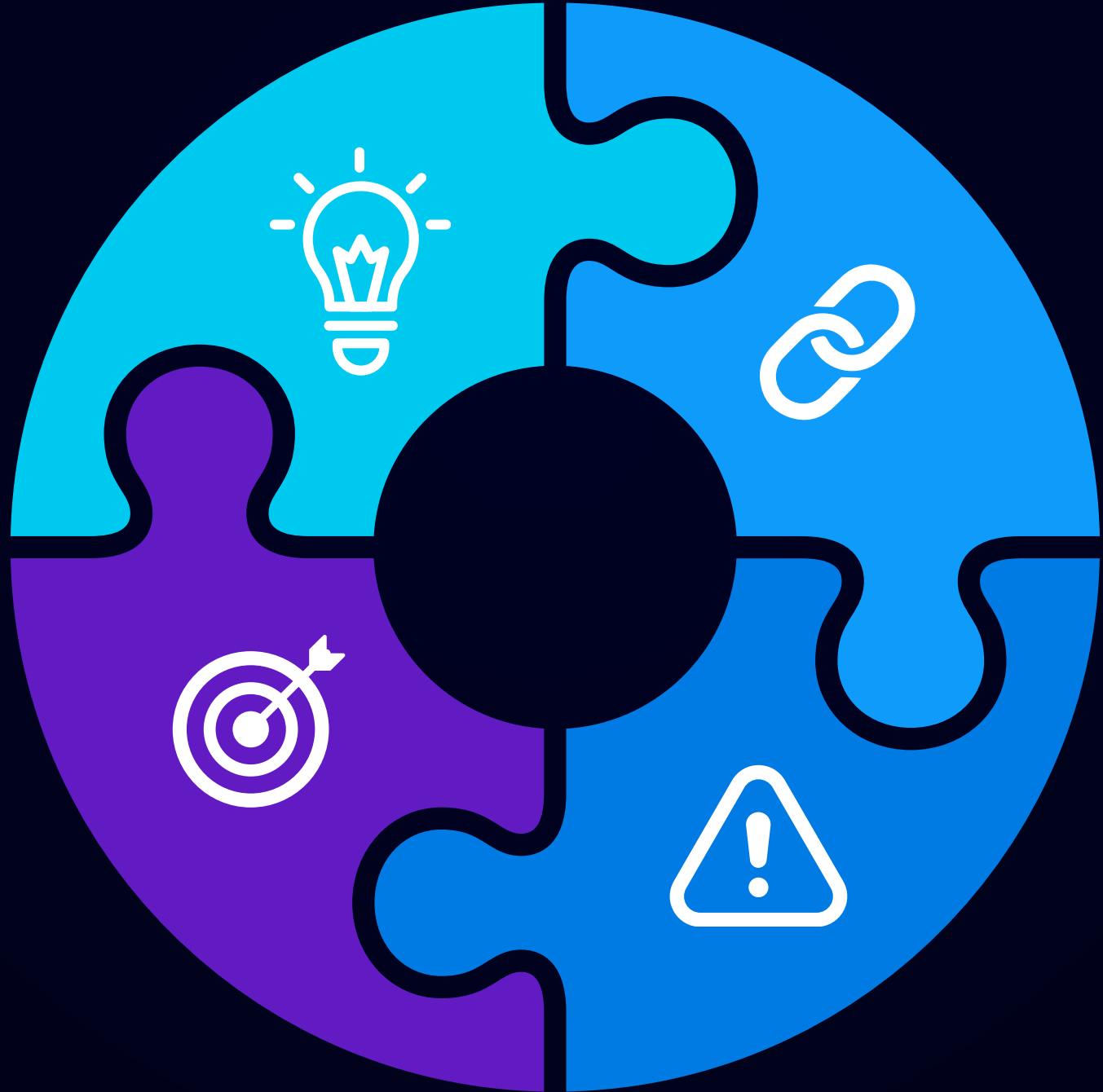
# CHALLENGES

- PROJECT PLANNING Initial step which needs more concentration
- PROJECT DESIGNING Important step which may cause long lead than usual
- TRANSPORTING COMPONENTS Process of Shifting the manufactured components to site
- MISPERCEPTION CHALLENGES A components with minor tolerance causes severe problems which can not be perceived in planning



# SWOT Analysis

for Architex-ai



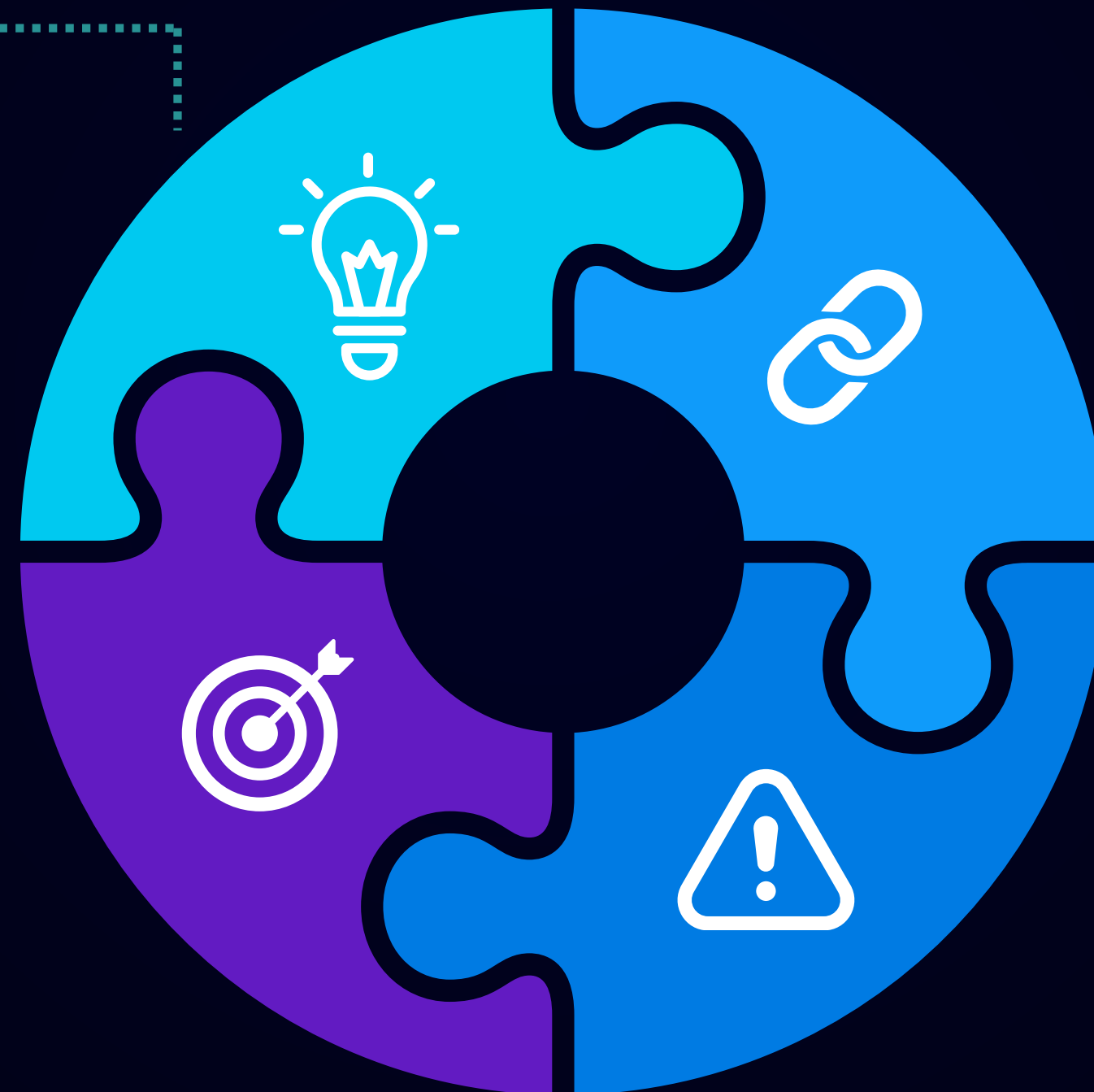
# SWOT Analysis

## for Architex-ai

# 01

## STRENGTHS

- Innovative & time-efficient
- Equipped with advanced LLMs
- Customization options
- Potential for collaborations
- User-Friendly Interface



# SWOT Analysis

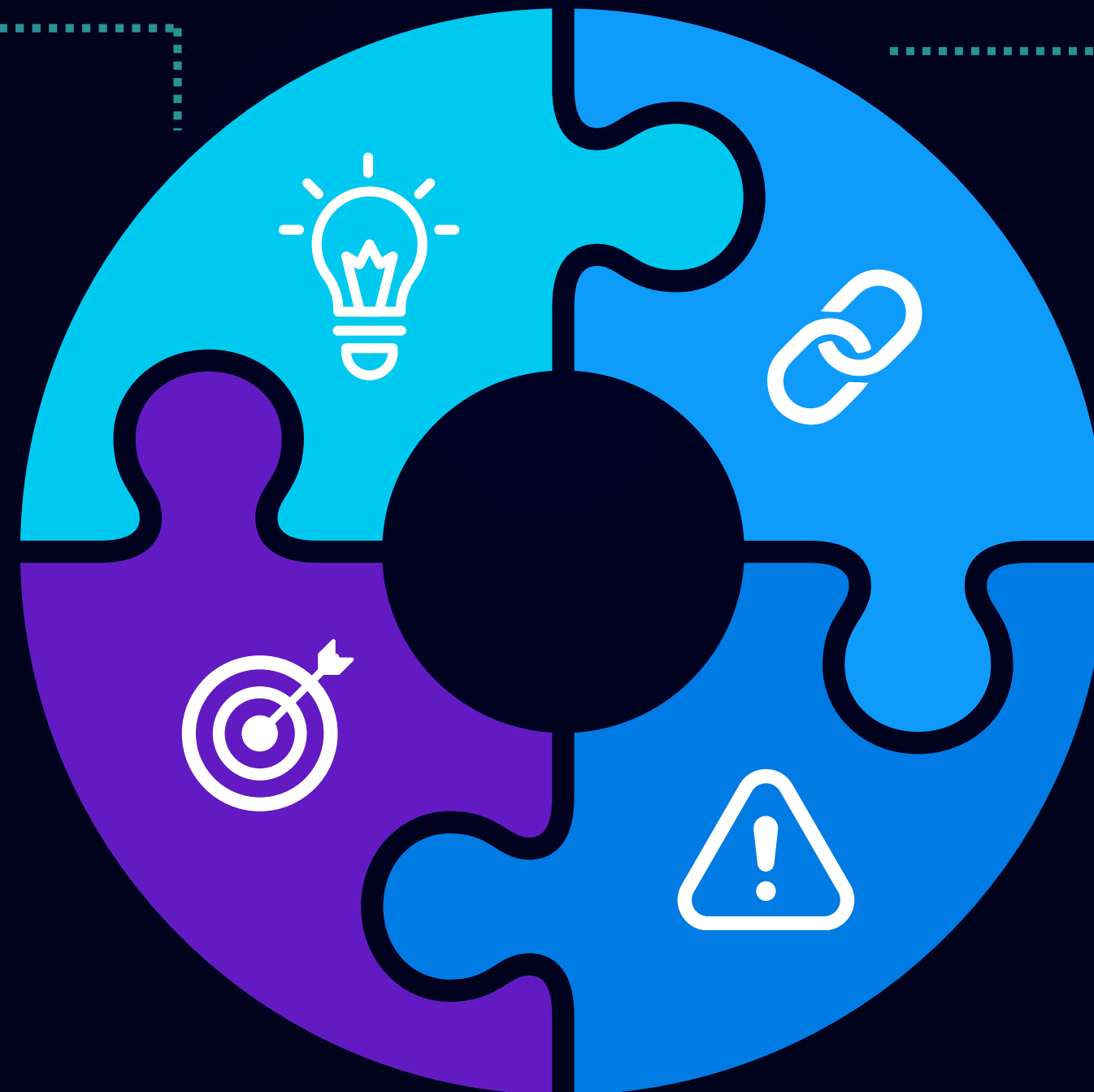
## for Architex-ai

### 01 STRENGTHS

- Innovative & time-efficient
- Equipped with advanced LLMs
- Customization options
- Potential for collaborations
- User-Friendly Interface

### 02 WEAKNESSES

- Input Quality Dependency on User
- Limited realism compared to traditional, manually crafted designs





# SWOT Analysis

## for Architex-ai

### 01 STRENGTHS

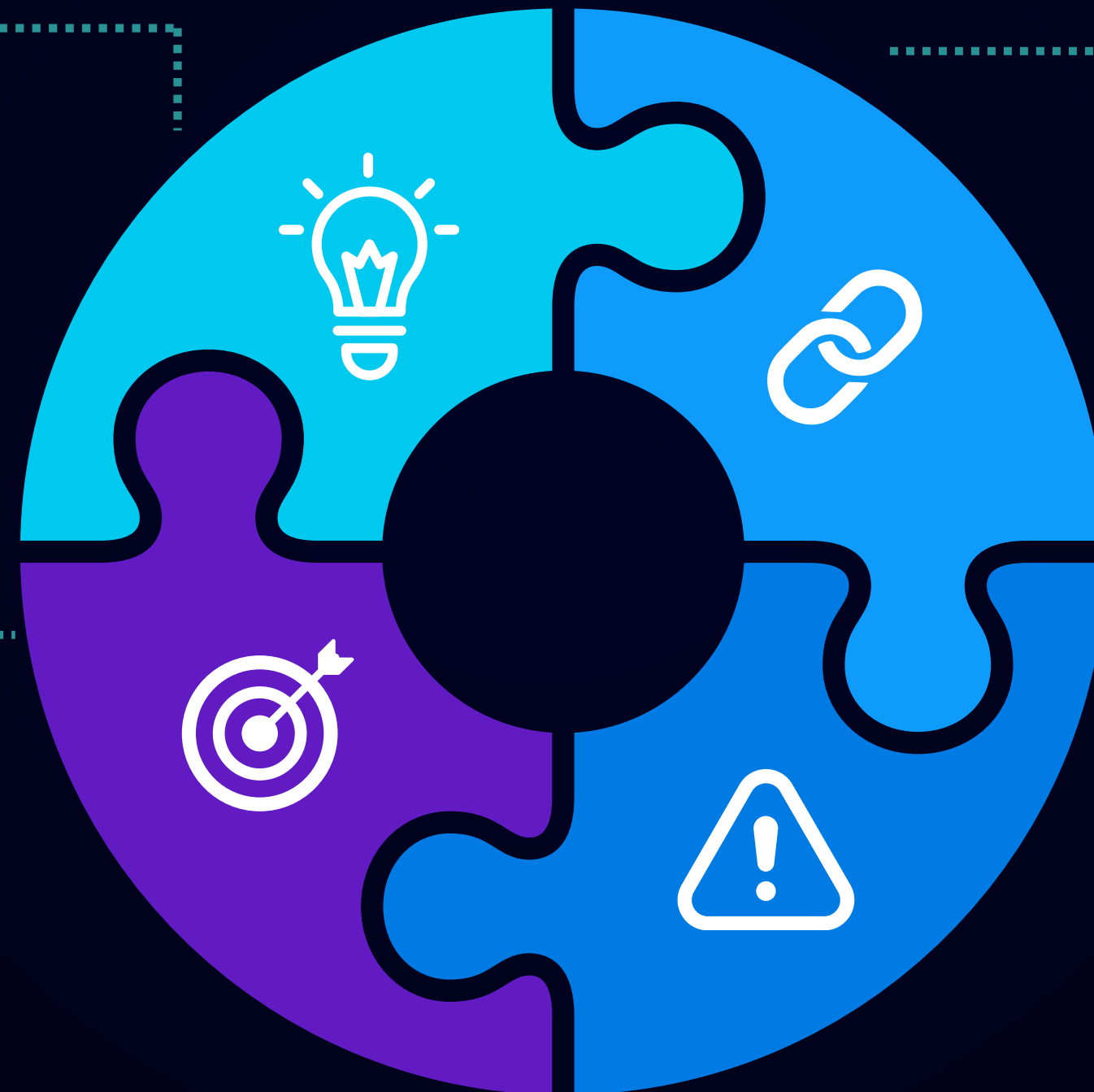
- Innovative & time-efficient
- Equipped with advanced LLMs
- Customization options
- Potential for collaborations
- User-Friendly Interface

### 02 WEAKNESSES

- Input Quality Dependency on User
- Limited realism compared to traditional, manually crafted designs

### 03 OPPORTUNITIES

- New features addition: AI design suggestions, landscaping options, or virtual reality (VR) integration
- Collaboration with domain experts to enhance realism



# SWOT Analysis

## for Architex-ai

### 01 STRENGTHS

- Innovative & time-efficient
- Equipped with advanced LLMs
- Customization options
- Potential for collaborations
- User-Friendly Interface

### 02 WEAKNESSES

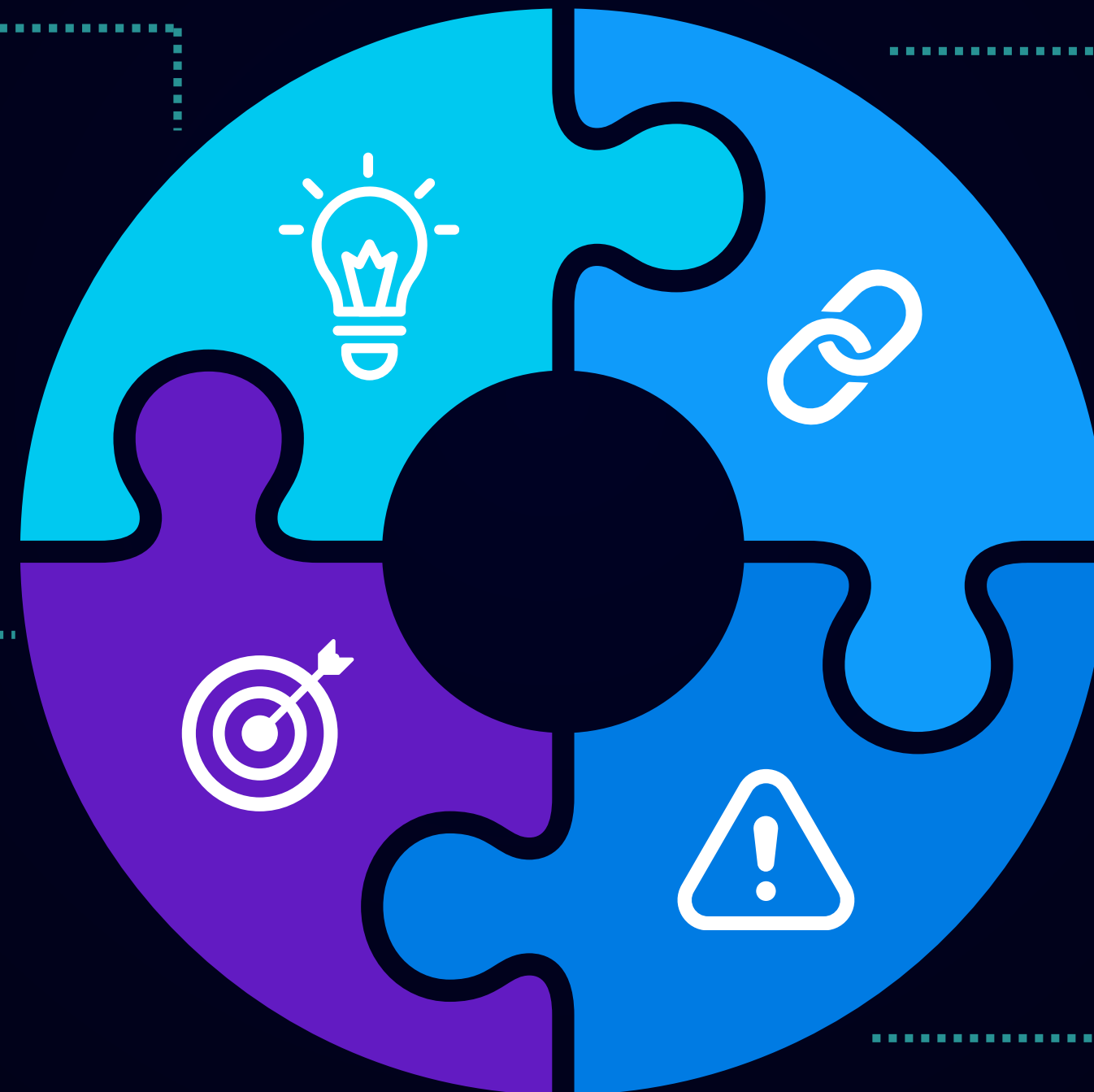
- Input Quality Dependency on User
- Limited realism compared to traditional, manually crafted designs

### 03 OPPORTUNITIES

- New features addition: AI design suggestions, landscaping options, or virtual reality (VR) integration
- Collaboration with domain experts to enhance realism

### 04 THREATS

- Safeguarding User Privacy
- Staying Ahead of Evolving Design Methods
- Navigating Technical Hurdles



# PEOPLE BEHIND THE MAGIC

**M. QASIM  
ALI**

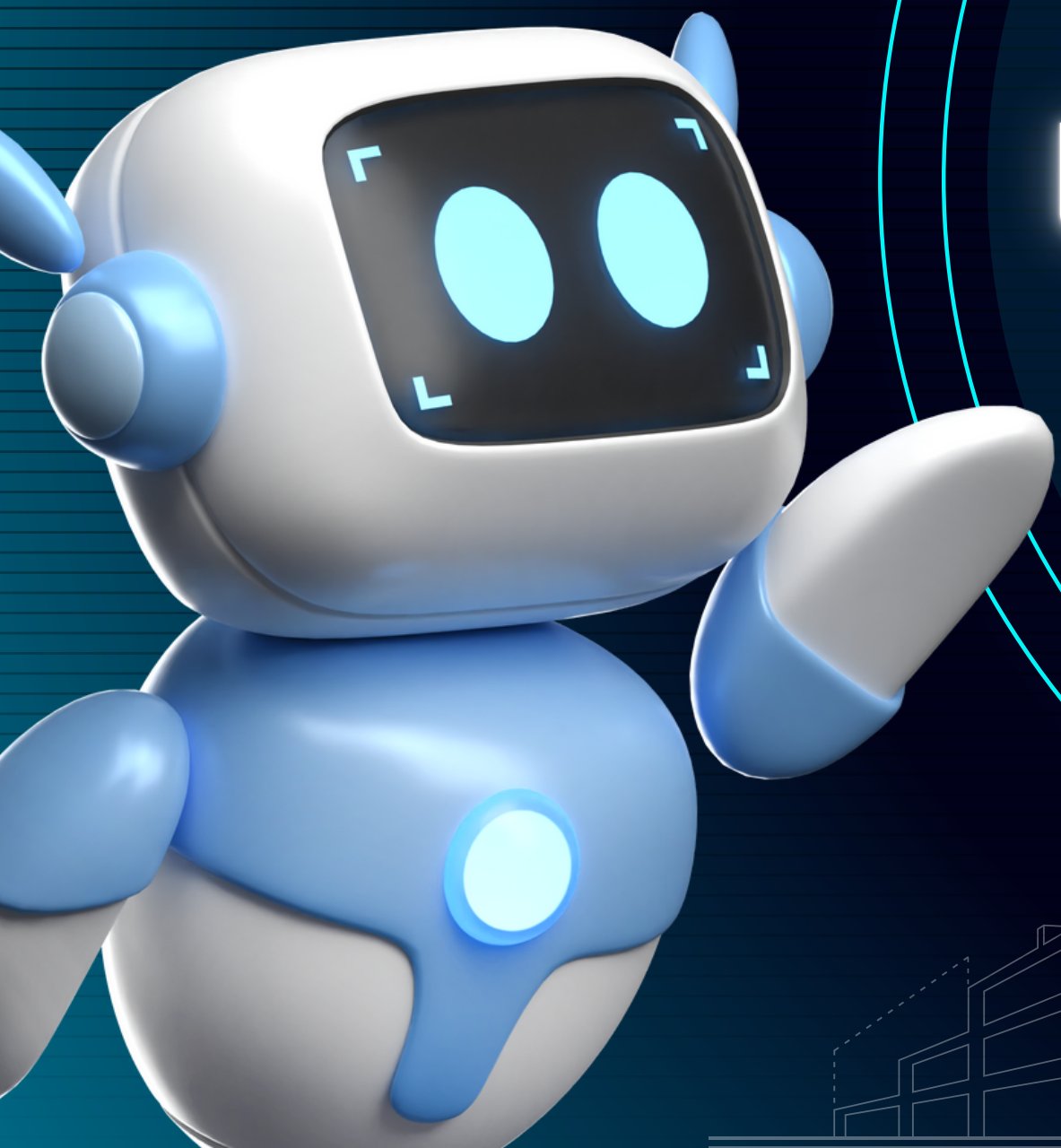
**OSAMA  
GHAFFAR**

**ZARTASHIA  
AFZAL**

**S. ZAIN ALI  
ZAIDI**

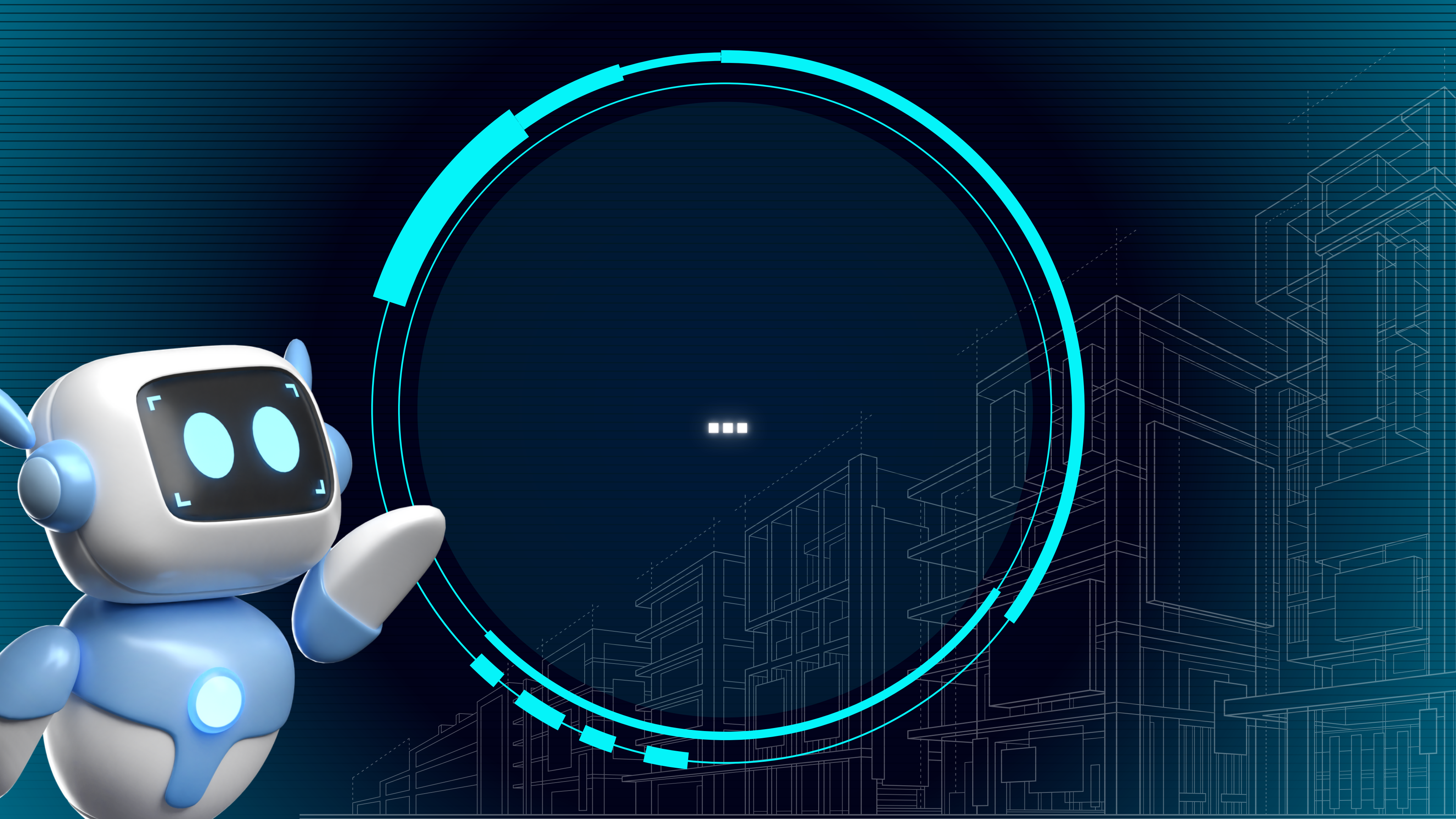
**MOIZNA  
ZAHEER**

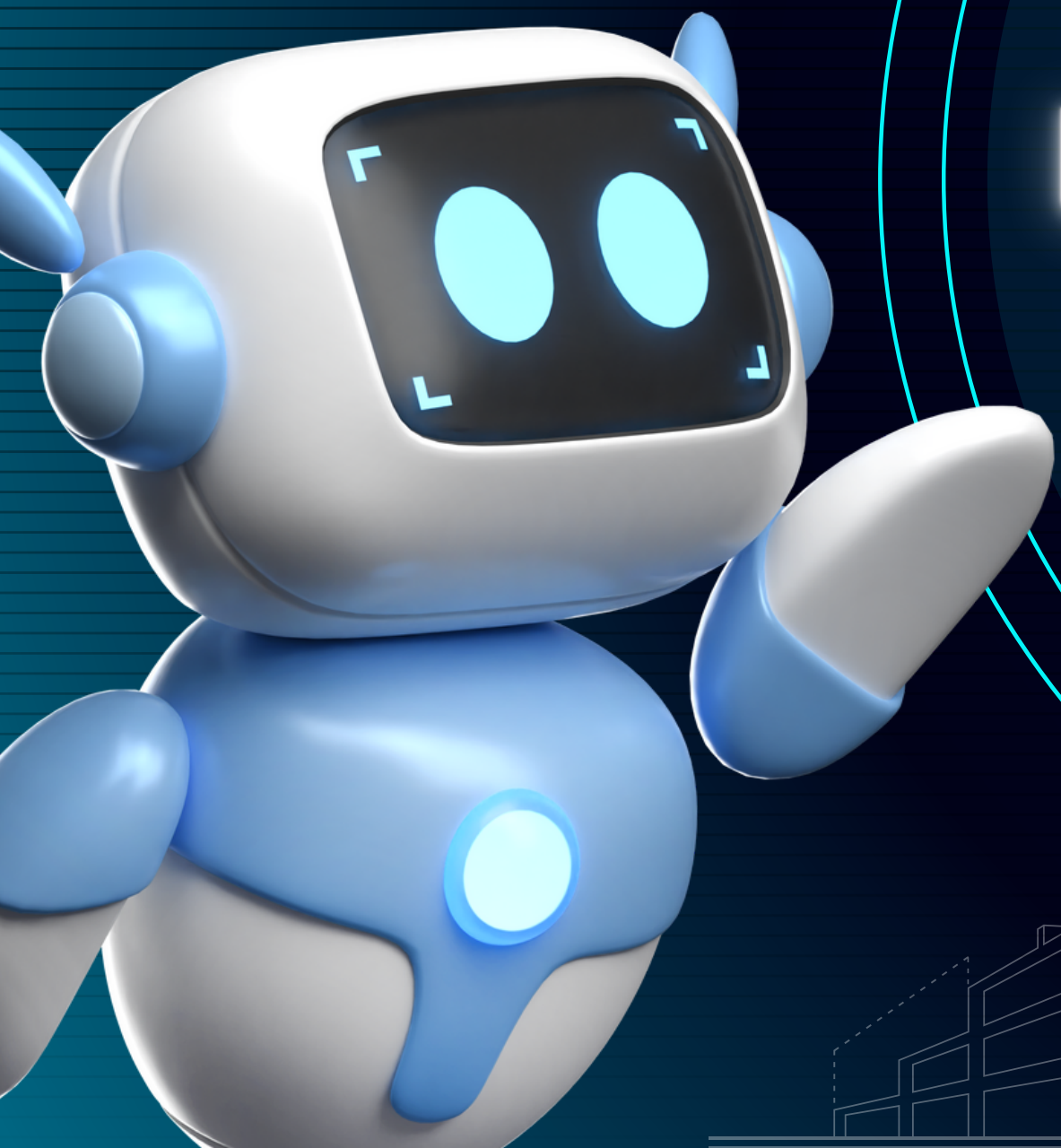
**AYESHA  
MEHBOOB**



WHAT ELSE?







LIVE DEMO!

