



ACCESSIBLE CARE FOR EVERYONE

SARA: PALLIATIVE CARE FOR THE NEW AGE.

+ OBJECT RECOGNIZERS

Key Pain Points

- Insufficiency or Inconsistency in palliative care services for financial or limited availability
- Palliative care induces emotional distress, witnessing elderly people or children go through their final days can be harrowing.
- Lack of accessible 24/7 personalized care solutions.
- Long term hospital residents long for companionship.



Answers

A companion that's always there and can actually help you. That you can actually communicate with.

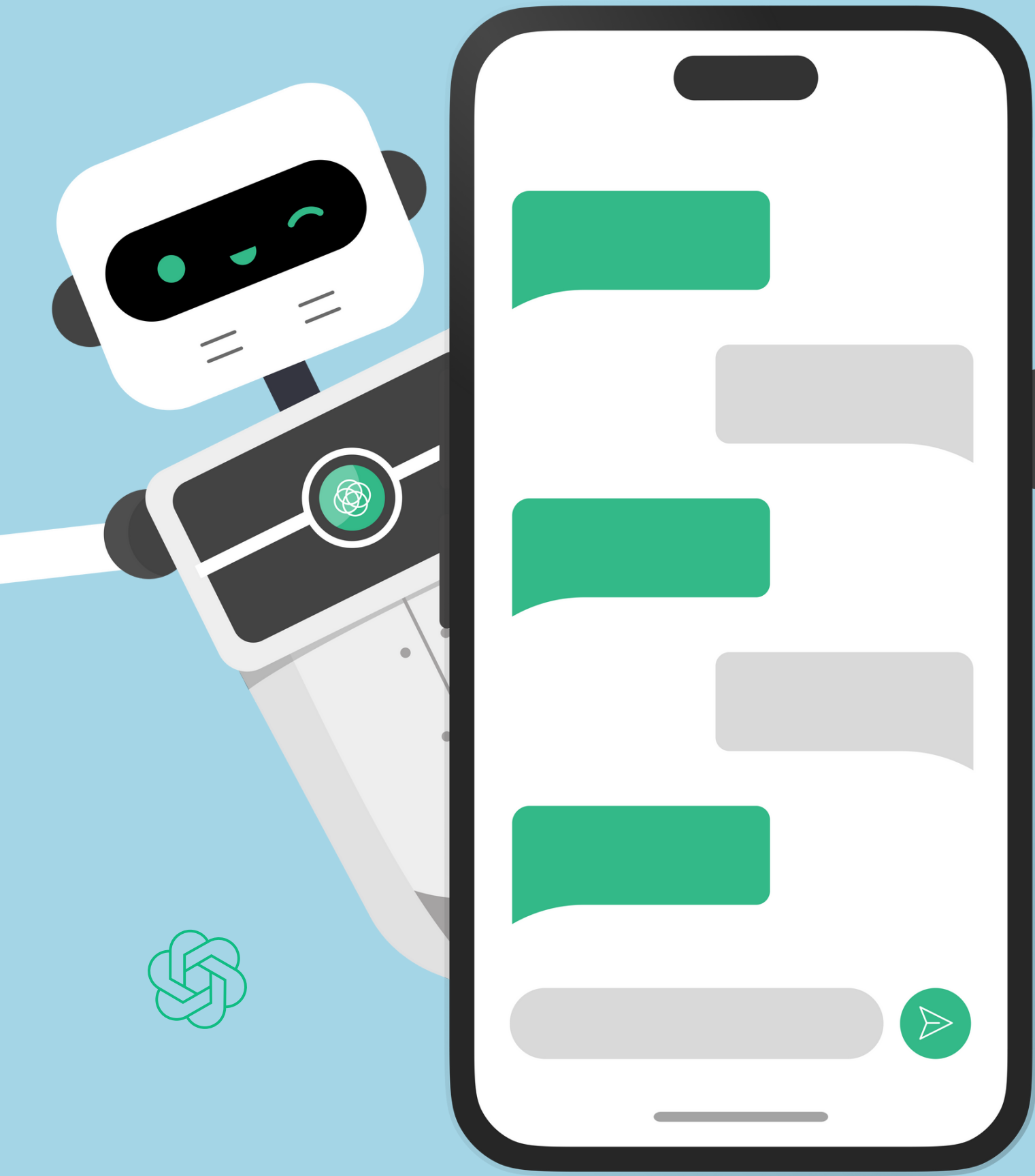


Sara

- **Your Companion:** Sara is an advanced AI system designed to provide palliative care support.
- **Voice Interaction:** You interact with Sara by speaking into a mic, Sara will speak back to you.
- **Memory Access:** Sara has the ability to access patients' memories and personal situations.
- **Always Available:** Sara can engage in discussions on a wide range of topics, offering companionship and emotional support.
- **Visually Engaging:** Sara can show pictures from the patient's past, helping to evoke positive memories and emotions, as well as image generation.
- **There To Help You:** Sara can assist patients in reaching out to friends or family members.

Market Study

- ChatGPT, primarily a conversational chatbot, is not explicitly designed to be a companion.
- However, a review of current user interactions reveals a prevalent trend: many individuals engage with ChatGPT for "Help and Support," utilizing it as a form of therapy or seeking companionship.[1] This unintended use underscores a significant demand for empathetic, conversational AI.
- From this insight, we believe that a dedicated product specifically tailored to offer companionship or therapeutic interaction would find substantial success in the market, tapping into the already evident demand for such services.



Why Sara ?

Cost Savings



Palliative care demonstrates significant cost reductions in patient care, with an average decrease of 25%.[\[2\]](#)[\[3\]](#)

Patient Well-being



Sara provides empathetic, audio-based companionship to reduce depression and loneliness.

Healthcare Staff



Sara offers an additional layer of support, reducing the workload and emotional burden on healthcare professionals.

Market Demand



Palliative Care Market size was valued at around USD 3.77 billion in 2021 and is expected to reach a value of USD 6.34 billion by 2030.[\[4\]](#)

Revenue Streams

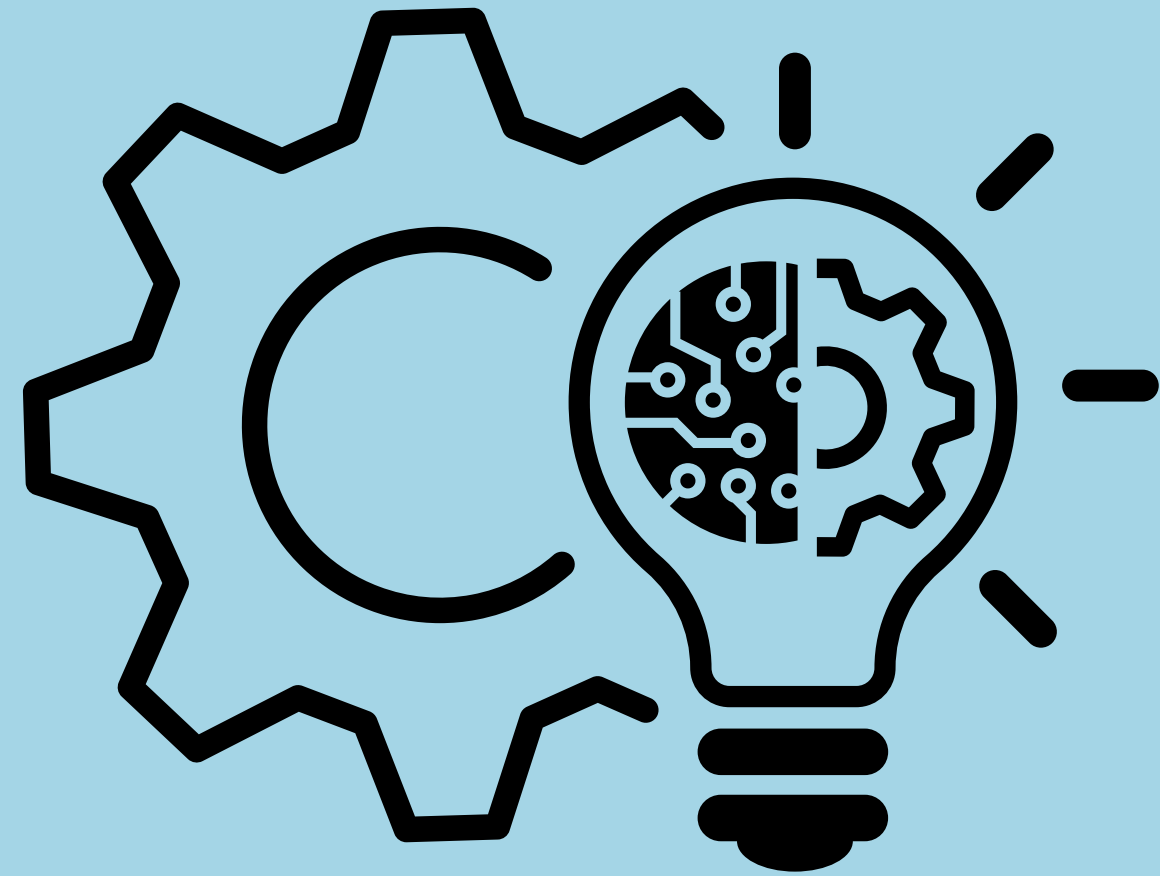
Subscription Model: Healthcare institutions would pay a recurring fee to use your AI companion service, which could be structured on a per-patient or per-bed basis.

Customization and Integration Services: Offering additional services to customize and integrate the AI system into the existing healthcare IT infrastructure of hospitals could serve as another revenue stream.



Technical Terms

- **System Implementation:** APIs are ready for production, pending stress testing (up till the end of the competition).
- **Stabilization:** Achieved stable operation after thorough testing and optimization.
- **Server Deployment:** Rented a runpod server to host the system.
- **Isolated Environments:** Each model operates in its own virtual environment for enhanced stability.
- **API Integration:** Established a stable API link for easy integration into various business platforms.
- **Technologies Used:** Utilized distilwhisper and XTTS for their performant capabilities and robustness.
- **Language Model Transition:** Initially used Mistral; switched to GPT due to GPU constraints (mistral remains for privacy).
- **Versatility:** Designed for robust performance, adaptable to a range of business needs with minimal modifications.



Future Plans

- **Strategic Integration and Partnerships:** Initially focusing on integrating the system into the King Hussein Cancer Foundation and Center, followed by expanding to other hospitals and care centers and scaling to other regions.
- **Personalization and Family Engagement:** Enhance the system's effectiveness by enabling family members to input patient data, fostering a more customized and personalized AI companion for each patient.



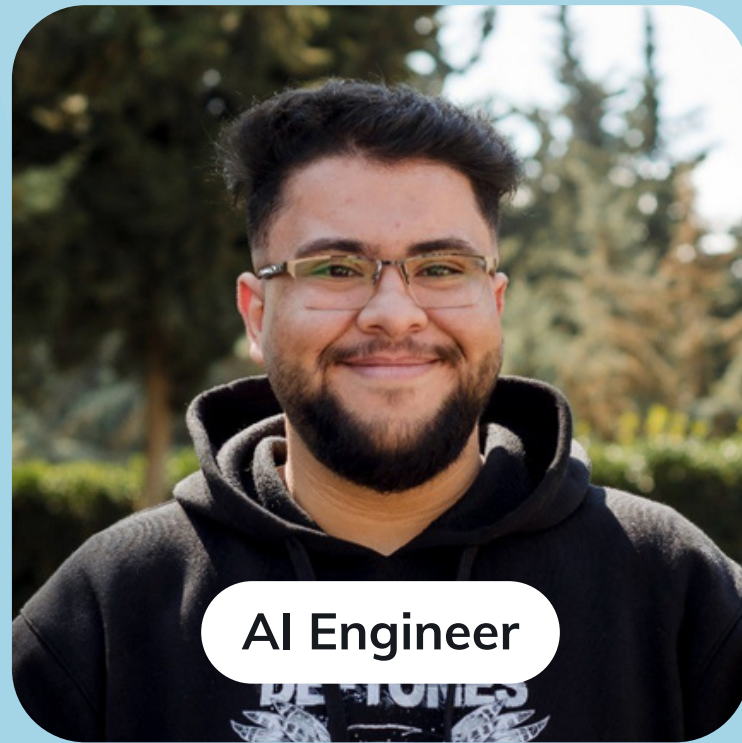


**LET'S TALK TO
SARA!**

[SARA ON GITHUB \(CLICKABLE\)](#)

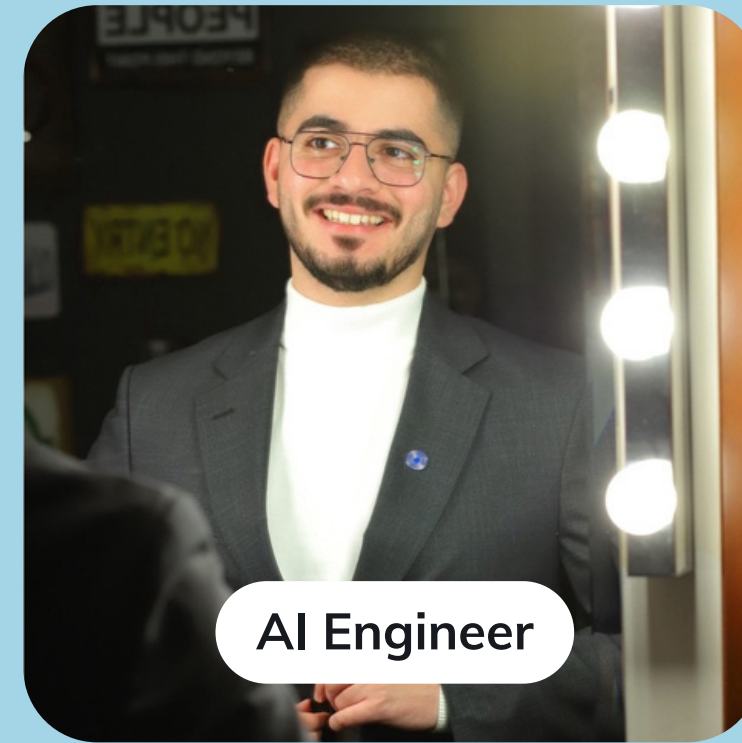
[HTTPS://GITHUB.COM/A-TABAZA/SARA](https://github.com/a-tabaza/sara)

Our Team **Members**



AI Engineer

Abdulrahman Tabaza
[Linkedin](#)



AI Engineer

Waleed Abu jaish
[Linkedin](#)