



INTELLISCAN

BY GAME CHANGERS

IntelliScan

**REVOLUTIONIZING MEDICAL IMAGING ANALYSIS
WITH AI PRECISION**

Team Members: Muhammad Ashar Ishfaq, Farheen
Imam , Homan, Sourabh

AGENDA

- Problem/Solution
- Technical Walk Through / Live Demo - Core Functionality & How it Works
- Business Strategy - Business Plan/Market Size/Target Audience
- Meet the Team
- Futuristic Scope & Unbounded Applications
- Conclusion

Next Slide 

THE PROBLEM - USE CASE

Next Slide 



- **User:** Alex
- **Profession:** A meticulous MRI specialist, playing a vital role in patient diagnosis.

Problem:

The current process of Brain MRI analysis and management is inefficient and lacks advanced predictive models.

Additionally there is a need for a platform that fosters community engagement among patients and healthcare professionals.



THE SOLUTION - USE CASE

Next Slide



- **User:** Alex
- **Profession:** A meticulous MRI specialist, playing a vital role in patient diagnosis.

Solution:

We have Been building a comprehensive software solution that consists of three main components:

- Brain MRI Analysis and Management System
- Advanced Image Processing and Feature Extraction Community and Collaboration Platform
- Community and Collaboration Platform

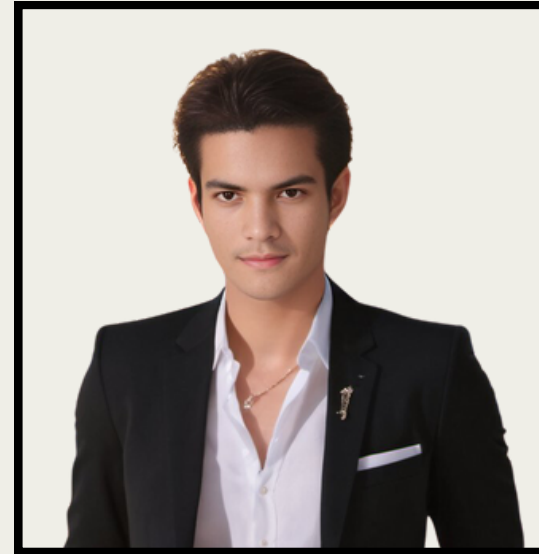
Meet

TEAM ALPACAS



AI Developer
Homan

Student @University of Padova 



Team Leader
Product Manager
M.Ashar Ishfaq

Student at IUB 



Front-End Developer
Farheen Imam

Full Stack Software Engineer 



Back-End Developer
Sourabh

Student @t Institute of Information
Technology, India

Timeline

Day 1

- Team Formation (Morning)
- Problem Definition & Brainstorming (Afternoon)

Day 2

- Prototype Development (Morning)
- Data Acquisition
- User Interface (UI) Design

Day 3

- AI Model Development
- Prototype Refinement & Testing
- Presentation Preparation

Day 4

- Final Testing & Refinement
- Submission

LIVE DEMO

Lets See Our Demo

TOOL FEATURES

Next Slide 

KEY FEATURES:

- Automated medical image analysis.
- AI-driven diagnostic predictions.
- Customizable reporting system.
- Real-time processing capabilities.
- Seamless integration with existing healthcare systems.

WHAT WE OFFER:

Intelliscan offers automated medical image analysis powered by AI, providing accurate diagnostic predictions in real-time. With customizable reporting and seamless integration, it streamlines workflow and enhances patient care. Hospitals equipped with Intelliscan gain efficiency, accuracy, and improved patient outcomes, making it an essential tool in modern healthcare.

OUR INNOVATIVE MEDICAL SOFTWARE

**WE'RE EXCITED TO PRESENT A REVOLUTIONARY
MEDICAL SOFTWARE SOLUTION POISED TO
TRANSFORM THE LANDSCAPE OF BRAIN MRI
EXAMINATIONS. OUR PRODUCT SEAMLESSLY
INTEGRATES INTO HOSPITAL AND CLINIC
WORKFLOWS, ELEVATING DIAGNOSTIC
ACCURACY AND NURTURING COLLABORATION
AMONG HEALTHCARE PROFESSIONALS AND
PATIENTS.**

PRODUCT ROADMAP

PHASE 1: USER INTERFACE DOCTOR , MEDICAL RECORD, SCANS:

- 1. DEVELOP AN INTUITIVE PLATFORM FOR RADIOLOGISTS TO ENTER OBSERVATIONS, GENERATE DIAGNOSTIC CONCLUSIONS, AND MANAGE PATIENT RECORDS.**

PHASE 2: AUTOMATING SCAN ANALYSIS:

INTELLISCAN TAKES A LEAP FORWARD WITH AUTOMATED BRAIN MRI ANALYSIS. WE DIRECTLY PROCESS YOUR SCANS, EXTRACTING KEY FEATURES TO STREAMLINE DIAGNOSIS AND IMPROVE ACCURACY.

PHASE 3: OUR OWN MODELS (COMING SOON!):

THE FUTURE IS HERE! BUILD CUSTOM AI MODELS TO UNLOCK DEEPER INSIGHTS FROM YOUR MRI DATA.

PHASE 4: REVENUE-FOCUSED SOLUTIONS:

INTELLISCAN OFFERS FLEXIBLE PRICING PLANS TO SUIT YOUR NEEDS. GENERATE ADDITIONAL REVENUE BY OFFERING INTELLISUM'S ADVANCED ANALYSIS CAPABILITIES TO REFERRING PHYSICIANS OR PARTNER INSTITUTIONS.

BUSINESS PROSPECTIVE

Our Plan

Our Purpose

Intelliscan aims to transform the field of medical imaging with a focus on MRI analysis. We offering an advanced system for MRI process.

Niche Market Strategy

Target Audience

- **MRI Specialists**
- **Researchers**
- **Medical Institutions**

UVP

Unique Value Proposition

Instant Clarity & Insight: Intelliscan provides time-saving, AI-powered summaries of relevant MRI research.

Key Aspects

- Automated medical image analysis
- AI-driven diagnostic predictions
- Customizable reporting system.
- Real-time processing capabilities.

Growth and Scale Strategy

Future

Expansion of our software to visionary endless applications.

- Strategic Partnerships
- Monetization Routes
- Geographical Expansion
- Strategic Alliances & Sustainability

Next Slide 

ENDLESS APPLICATIONS - FUTURE

Premium Futuristic Endless Applications :

- **Precision Medicine:** Imagine AI-powered analysis of not just MRI scans, but a comprehensive patient profile, leading to personalized treatment plans and improved outcomes.
- **Early Disease Detection:** Intelliscan's AI could analyze vast datasets, uncovering subtle patterns in medical scans to enable earlier detection of diseases.
- **AI-powered Surgical Assistance:** Intelliscan's real-time analysis of medical images could support surgeons during complex procedures, leading to improved accuracy and patient safety.



MARKET SIZE

Global market for Medical
Analysis

\$150B

Global market for
Medical Imaging
Analysis

\$33.8B

Global market for Medical
institutions equipped with
MRI machines

\$10.3B

IMAGINE A WORLD WHERE MRI ANALYSIS ISN'T A
BATTLE AGAINST TIME AND INFORMATION
OVERLOAD.

INTRODUCING INTELLISCAN, A
REVOLUTIONARY RADIOLOGY APP
POWERED BY AI, DESIGNED TO BECOME
YOUR TRUSTED PARTNER IN THE MRI
SUITE.

BUSINESS BENEFITS

FOR HOSPITALS:

- IMPROVED EFFICIENCY
- ENHANCED ACCURACY
- COMPETITIVE ADVANTAGE
- PRECISION MEDICINE
- EARLY DISEASE DETECTION
- REAL-TIME ANALYSIS
- COST-EFFECTIVE
- TIME SAVING

<Health Concerns in modern life we live>

PRE-PANDEMIC USAGE

- MRI specialists faced a constant influx of research papers and mounting workloads. Finding relevant information and keeping current was a struggle.
- The sheer volume of medical research created a constant pressure to stay informed, yet limited time made it difficult for specialists to effectively process all the data
- The shift towards remote work in healthcare settings further emphasized the need for efficient and remote access to information.

Post-Pandemic Surge

- Intelliscan's mobile-friendly platform is perfectly positioned to cater to the needs of busy specialists working in a fast-paced environment.
- By offering concise summaries and on-the-go access, Intelliscan empowers specialists to save valuable time and maximize their efficiency.

A blue circular logo with the text "MRI Pandemic" in white. "MRI" is in a bold, serif font, and "Pandemic" is in a cursive, serif font.

*MRI
Pandemic*

Conclusion

Intelliscan addresses the core challenge of information overload and time management in the medical field, a challenge that existed even before the pandemic but has been undeniably amplified by recent events. Our focus on mobile accessibility and efficient information delivery positions Intelliscan as a valuable tool for MRI specialists navigating the demands of the modern healthcare landscape.



INTELLISCAN

BY GAME CHANGERS

Thank you!

