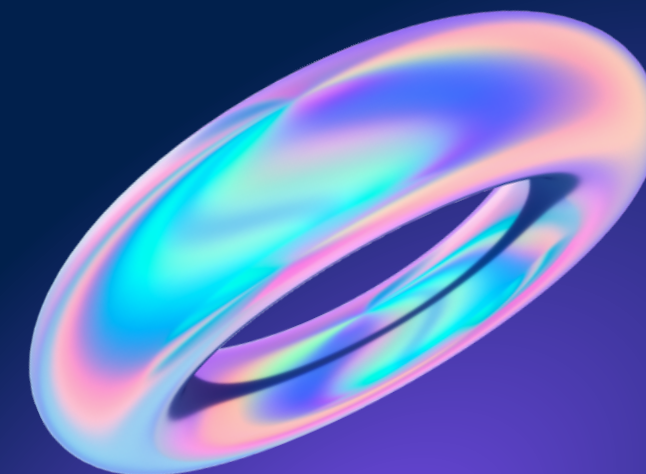
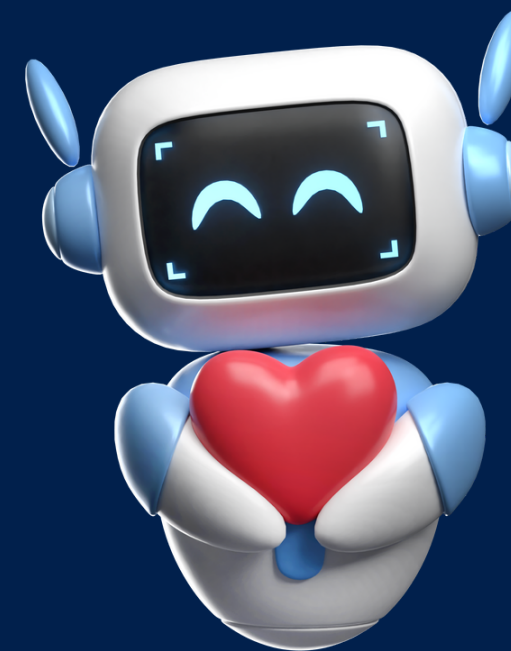




# TadawAi

Your Personal Health Assistant  
powered by GPT 4





In a study conducted in Saudi Arabia found that:

**92.6%**

of the participants referred to the Internet for health information.



Resource: <https://www.ncbi.nlm.nih.gov/pmc/articles/PMC8551798/>

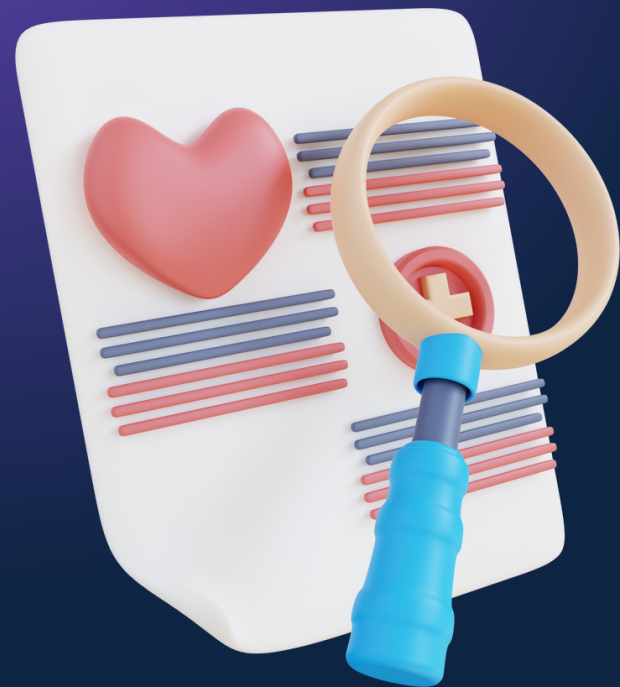


The image features a dark blue background with abstract, colorful geometric shapes. In the top right corner, there is a complex, multi-layered structure resembling a stylized letter 'E' or a series of overlapping planes, rendered in shades of purple, pink, and cyan. In the bottom left corner, there is a smooth, flowing, wavy shape with a similar color palette, appearing like a liquid or fabric surface. The text is centered in the middle of the frame.

**But ..**

what about misleading information &  
untrustworthy platforms ?

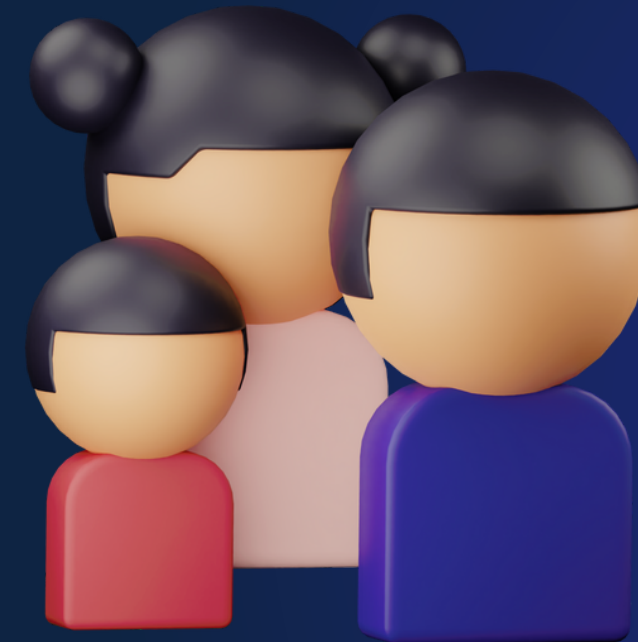
# Problem



**Inaccurate self-  
diagnosis**

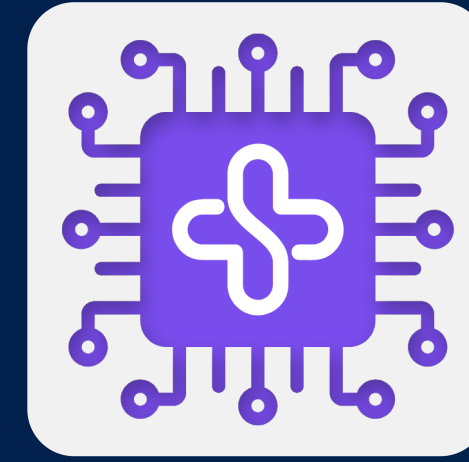


**Lack of knowledge  
of patient's medical  
history**



**Lack of knowledge  
of patient's family  
medical history**

# Solution



TadawAi



**24/7 Health  
assistant**



**Precise diagnosis  
leveraging family  
health history**

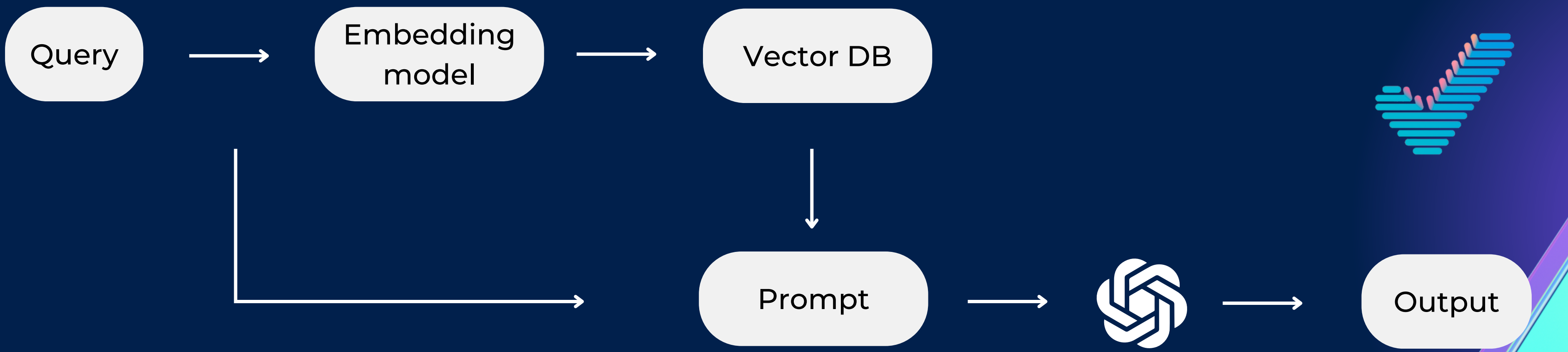


**Physician workload  
optimization**



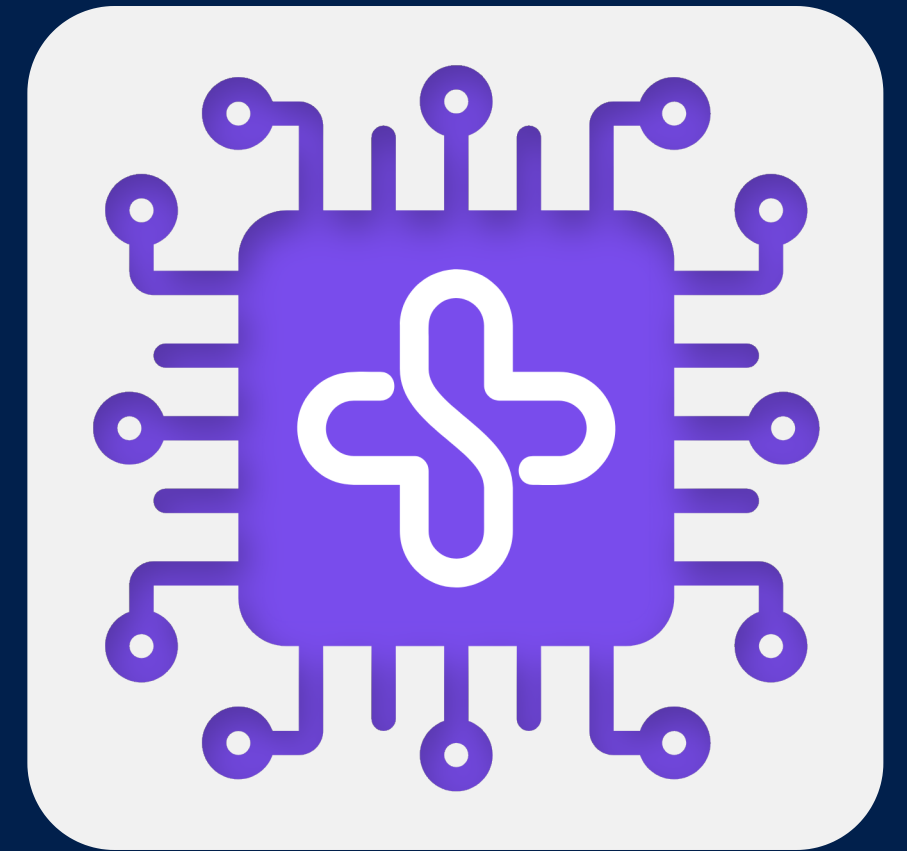
**Early diagnosis &  
predictions**

# How TadawAi works?



# TadawAi

aims to assist physicians not to replace them



# Our Goal



**TadawAi** aligns with the 2030 vision goals, aiming to improve healthcare access, service quality, and preventive measures against health risks.





# Target Groups

Physicians



Chronic patients

Individuals seeking  
General Health  
Inquiries

# Competitor analysis

	Sehaty	Tawakkalna	naphies	Sanar	TadawAi
24/7 availability				✓	✓
Access to medical history	✓	✓	✓		✓
Family medical history					✓
Health predictions					✓

# Market size

The Saudi Arabia home healthcare market  
was valued at

**\$6.16 billion**

in 2022

Resource : <https://www.insights10.com/report/saudi-arabia-home-healthcare-market-analysis/>

# Business model

Revenue stream



Free Trial (access to limited features e.g 1 chat / user)



Premium ( unlimited number of chats/user )



Enterprise Subscription (Scales based on the number of patients a physician manages)

# Team



**Fay Al-Shubaili**

- Software engineer
- AI Researcher
- Business developer



**Alexis Rotureau**

- NLP Data scientist in Toronto
- AI Consultant

# Glimpse into TadaWai

- Prototype
- Live Demo



**Thank You!**



**TadawAi**

