

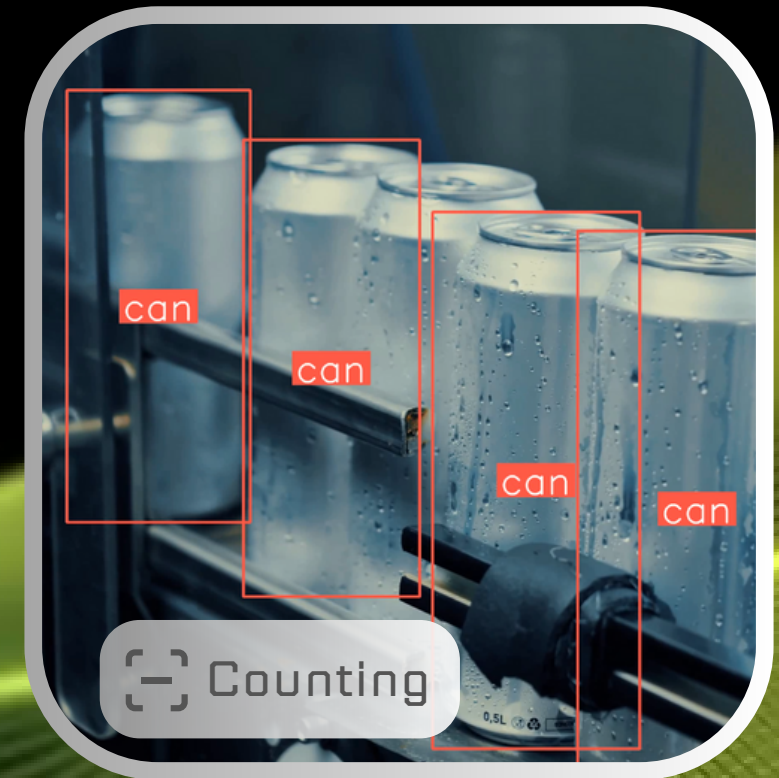
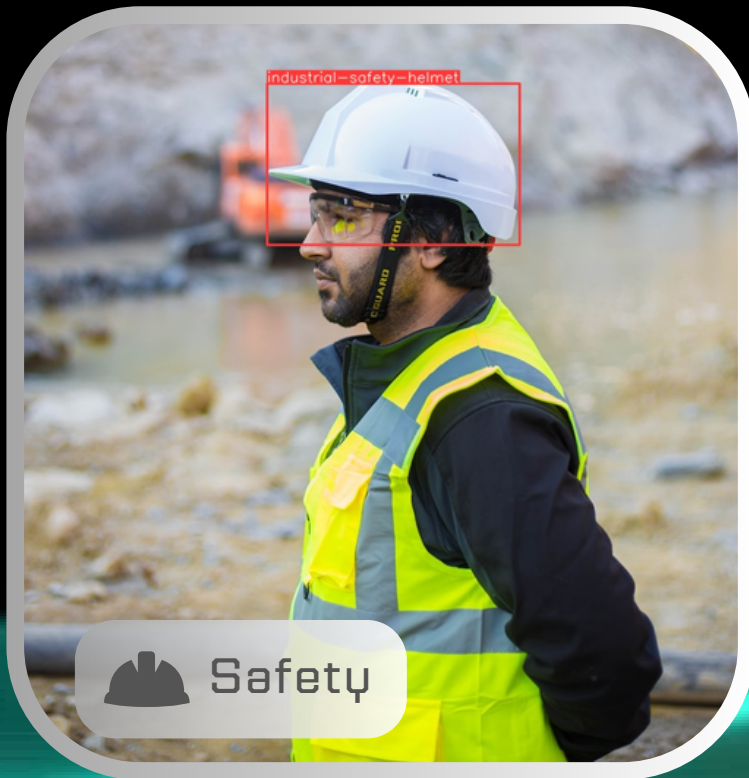


DELIVERING THE FUTURE

[Learn more](#)

WE ARE EXPERTS IN AI
AND COMPUTER VISION

Practical AI solutions for **MSMEs** and **Households**



Many more....

ALL IN ONE DESIGN
FOR EASY DEPLOYMENT

*We build affordable
Smart Imaging Device*



Equipped with Jetson Nano

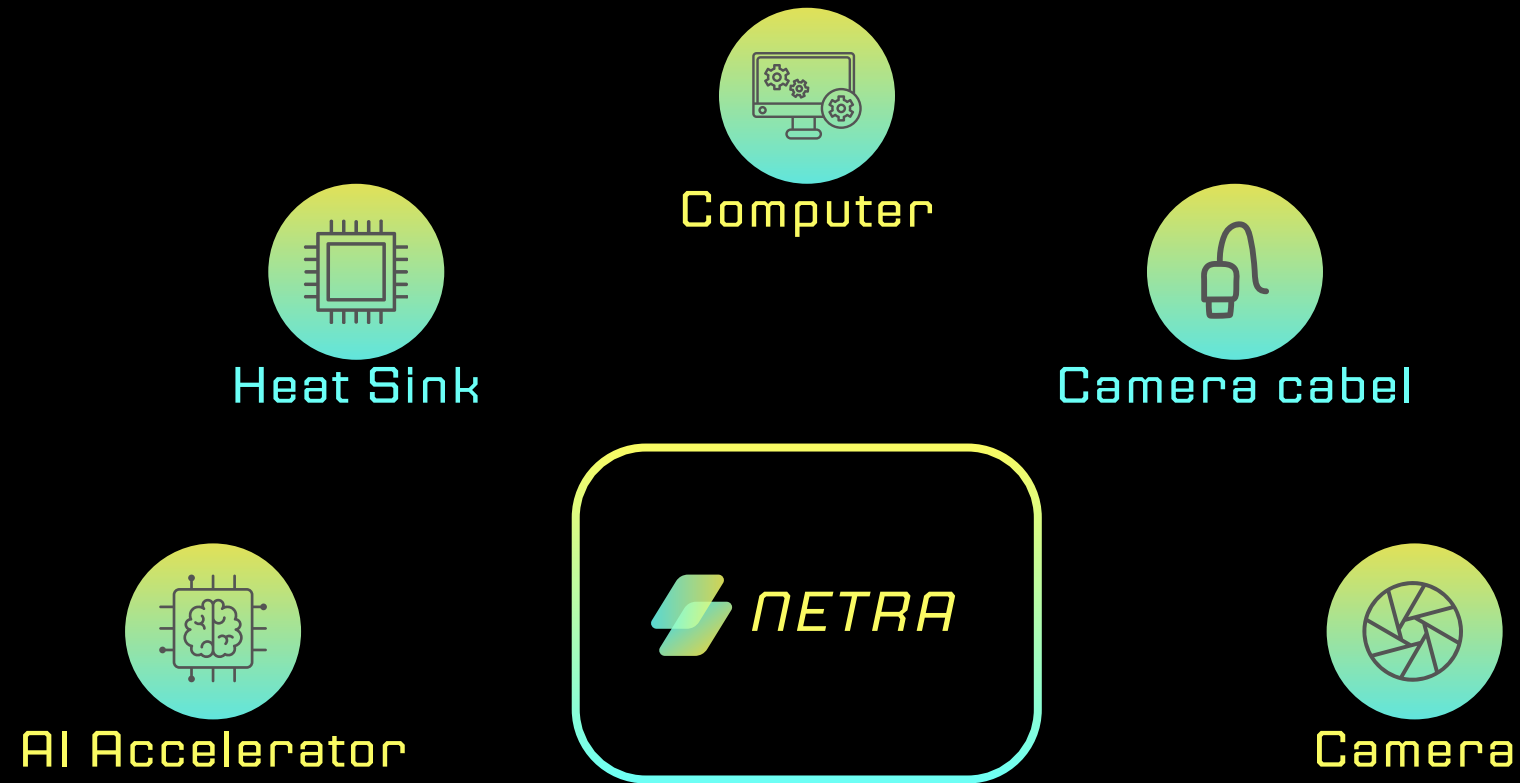
Visioned by PI Camera module

Optimized Software environment

*for presentation only not real

ALL IN ONE DESIGN
FOR EASY DEPLOYMENT

Advantages of Smart Imaging Device

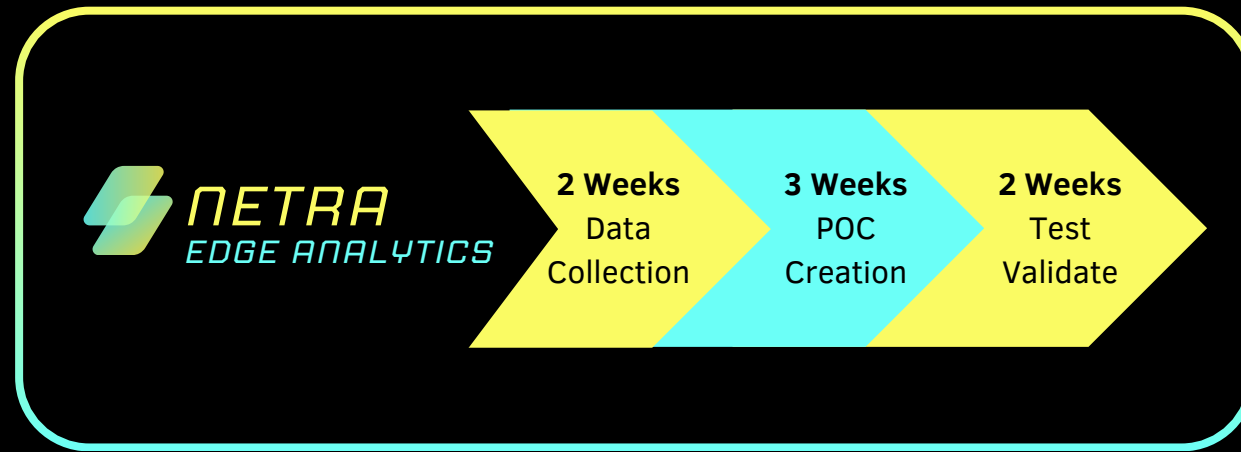


ALL IN ONE DESIGN
FOR EASY DEPLOYMENT

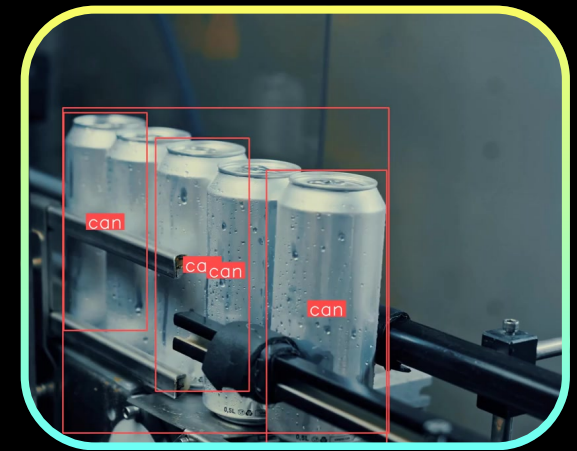
At High level *how NETRA works*



Installation



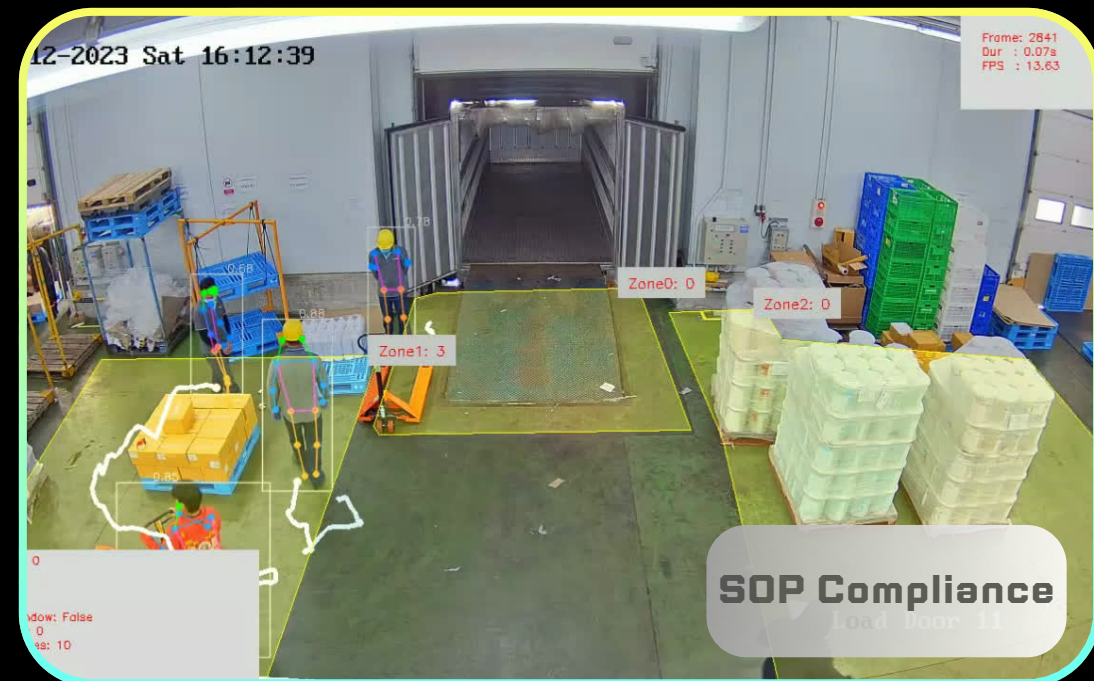
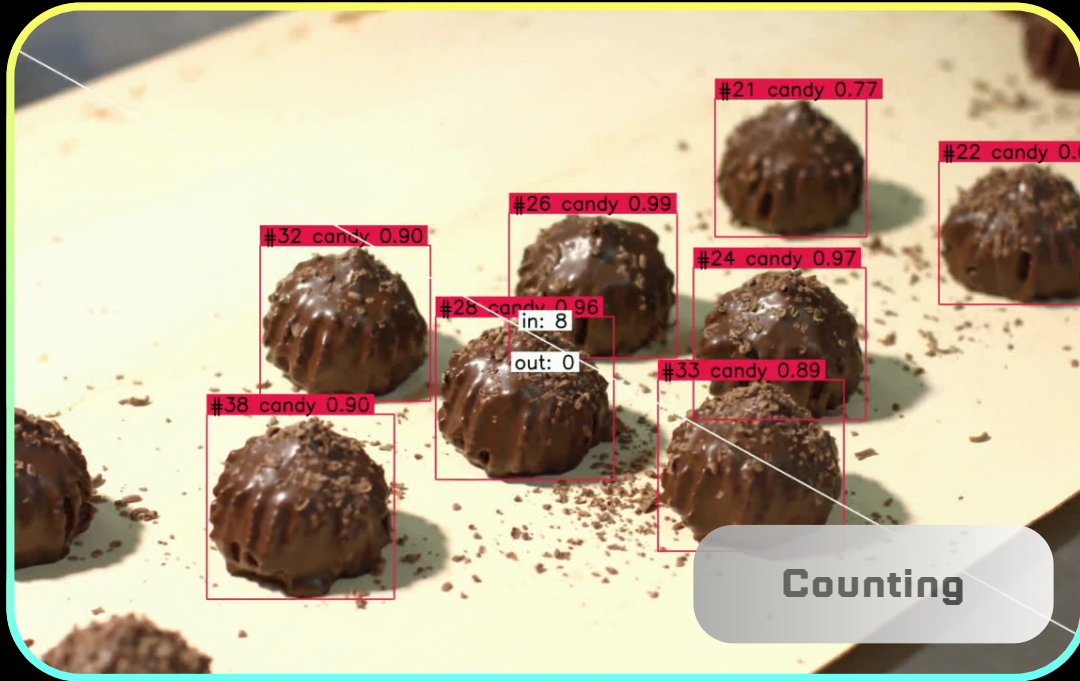
Edge Analytics



Ready for Production

NO MATTER WHAT YOU NEED

Use cases of NETRA



NO MATTER WHAT YOU NEED

Things can do with  NETRA

Classify



Detect



Segment



Pose



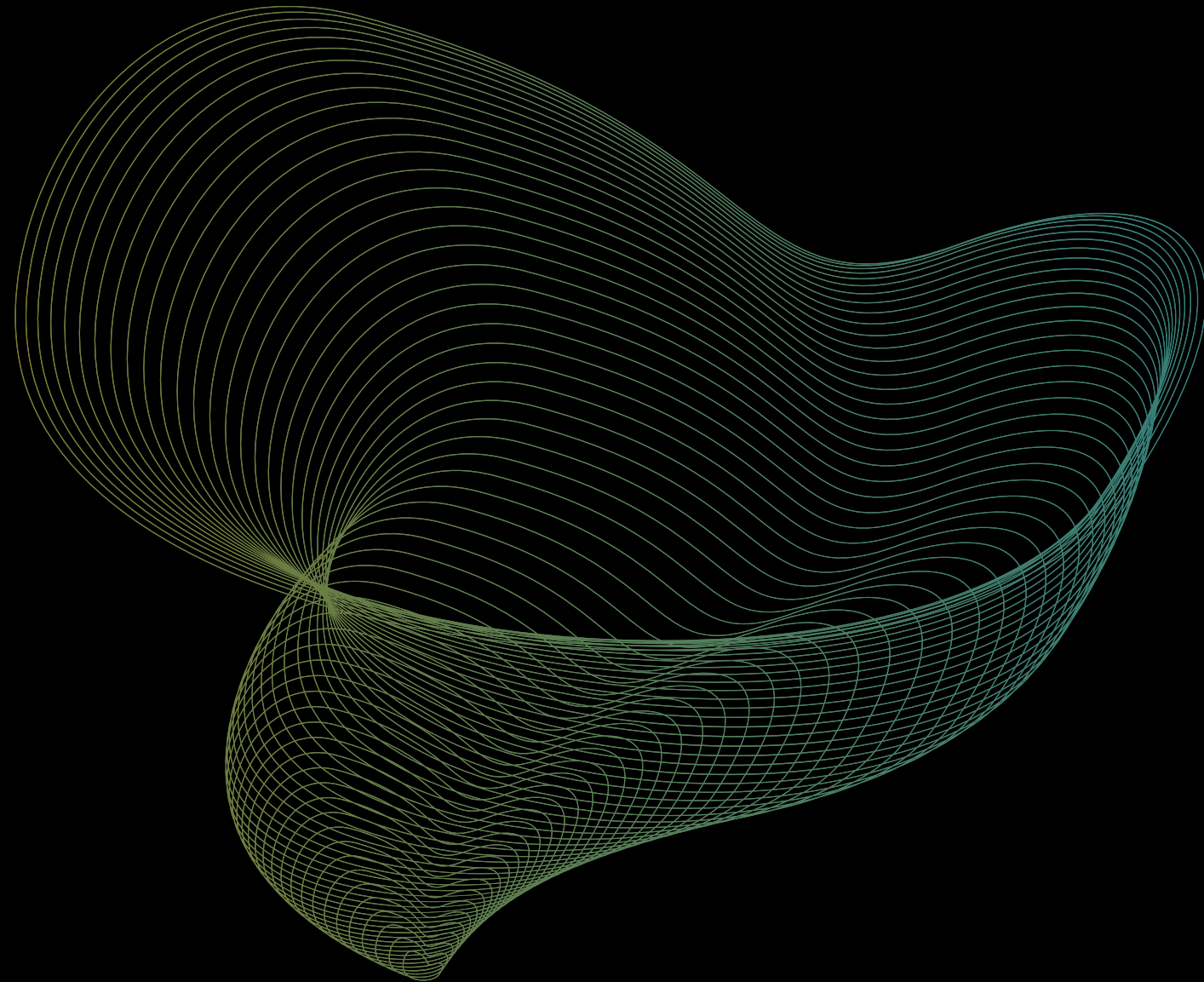
Track



WE STARTED SMALL.



Currently, we're in the process of developing a hardware prototype using Raspberry Pi. Our automation script for detecting customer requirements has been successfully implemented. Looking ahead, we're planning to incorporate Jetson Nano to create an edge device. Additionally, we're strategizing the development of our own annotation tool.



LET'S CHAT



Phone

+91 XXX XXX XXXX

Email

netraaivision@gmail.com

Social

