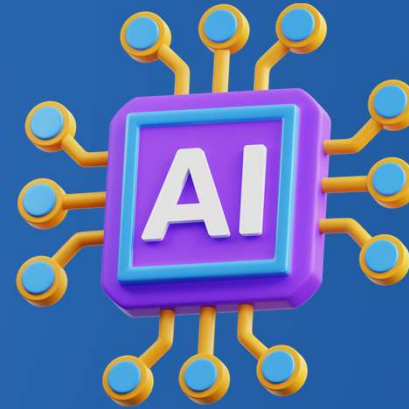


lablabai

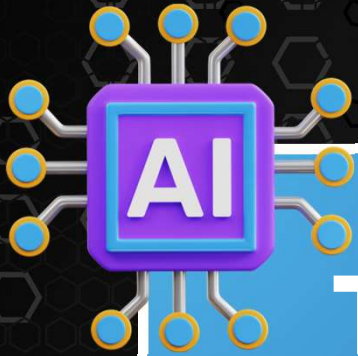
LEAP'24



HACKATHON

Team: **WELLNES NEXUS**





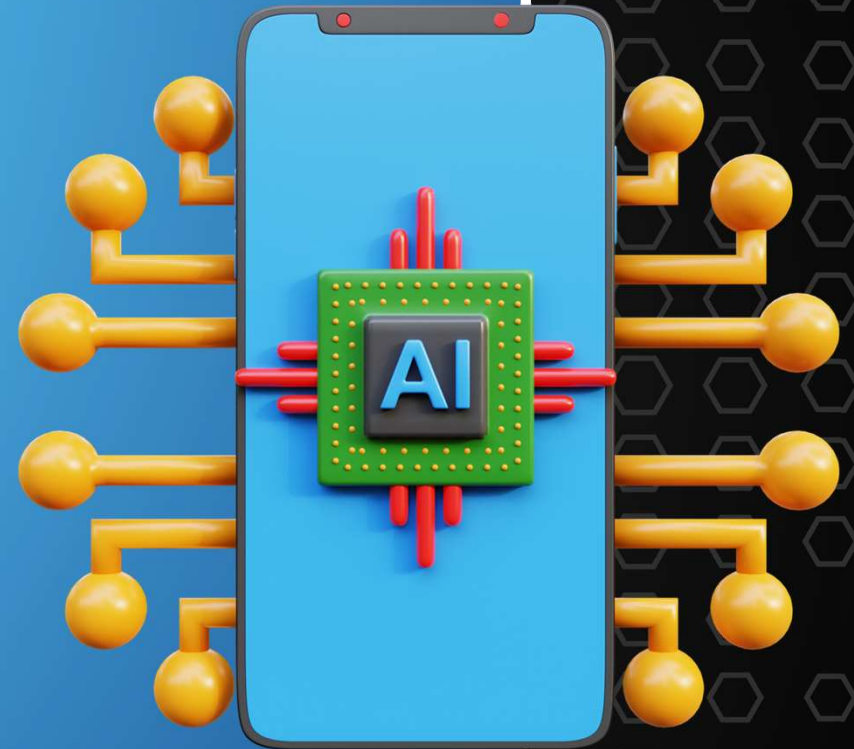
# Table of contents

- Challenge 01
- Our Solution 02
- Technologies used 03
- Project impact 04
- Future Enhancement 05
- Conclucision 06

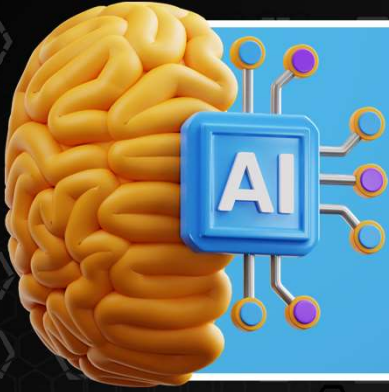


# Hakathon Challenge

- **Description:** Create an AI application addressing critical global challenges related to health and wellness.
- **Key Focus Area:** Health & Wellness



AI



# WELLNESS NEXUS:

An integrated healthcare app specifically designed to improve health and wellness

## Nexus Scan

Approximates calorie intake using computer vision

## Nexus Sugar

Predicts sugar content in food

## Nexus Fit

Determines ideal weight range

## Nexus Bot

Personal assistance for users



# Technologies Used

## Gemini-Nexus

State-of-the-art language model for natural language understanding and generation.

## NLTK

Python Natural Language Toolkit: NLP library for text analysis and processing.

## Fuzzywuzzy


Library for fuzzy string matching.



AI



# Gemini-Nexus



```
You: hi
NexusBot: Hi there!
You: how are you?
NexusBot: I am doing well, thank you!
You: what services do you offer?
NexusBot: We offer a variety of services including Nexus-Scan, Nexus-Sugar, and Nexus-Fit.
You: what is nexus-scan?
NexusBot: Nexus-Scan, our Computer Vision model, works wonders with just a picture of your meal. It accurately determines the calorie content, helping you keep track of what you eat. By storing this data, it provides valuable insights into your long-term calorie intake, which is incredibly helpful in managing conditions like diabetes and obesity. With Nexus-Scan, you will receive personalized tips and suggestions to make healthier food choices and improve your overall well-being.
You: what is nexus sugar?
NexusBot: Nexus-Sugar helps determine if your blood sugar levels are normal or related to diabetes.
You: what is nexus fit?
NexusBot: Nexus-Fit is our calculation algorithm that helps user to track their weight phase. i could determine whether the user has weight problem or not
```



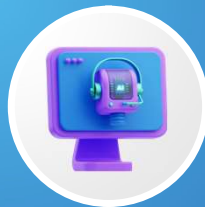
## Project Impact



Individual health and wellness



Promoting healthier dietary choices



Encouraging fitness and weight management

# Future Enhancement

01

Enhancing accuracy of calorie and sugar predictions & Integrating additional health tracking features

02

Collaborations with healthcare professionals for personalized recommendations

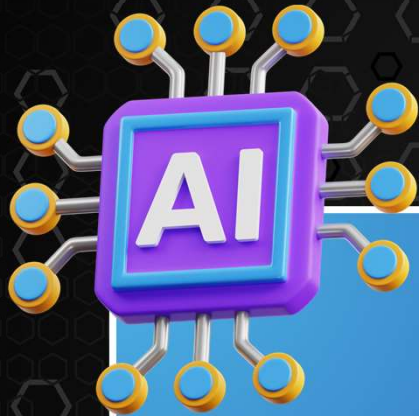






## Conclusion

Wellness Nexus revolutionizes health and wellness through advanced AI technologies. By seamlessly integrating computer vision, natural language processing, and personalized assistance, our application empowers users to make informed choices and achieve their fitness goals. As we continue to enhance and refine Wellness Nexus, we are committed to fostering healthier lifestyles and addressing global health challenges. Together, we can make a positive impact on individuals' well-being worldwide.



TEAM - WELNESS NEXUS

**Thank You!**

