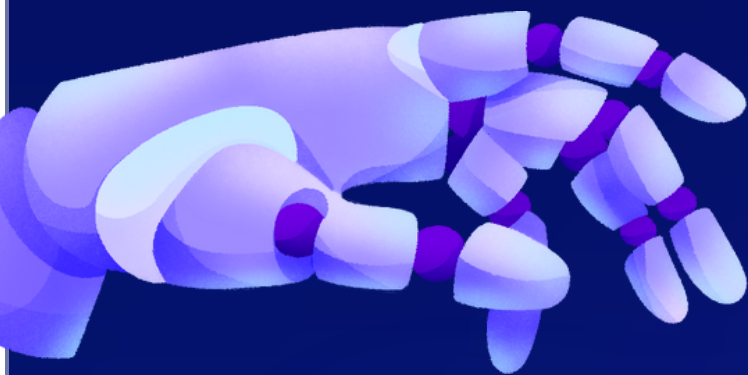


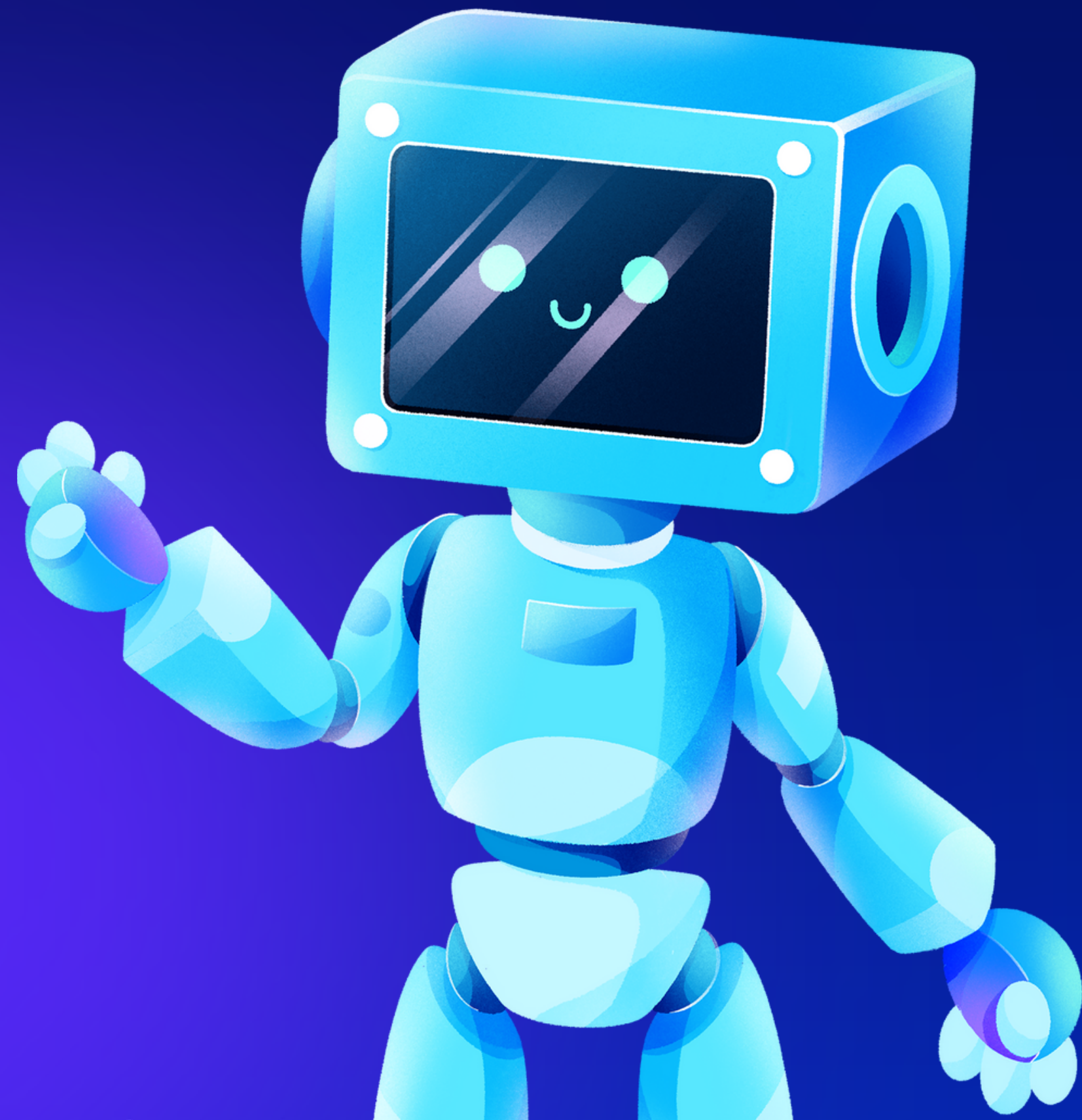
Claude 3



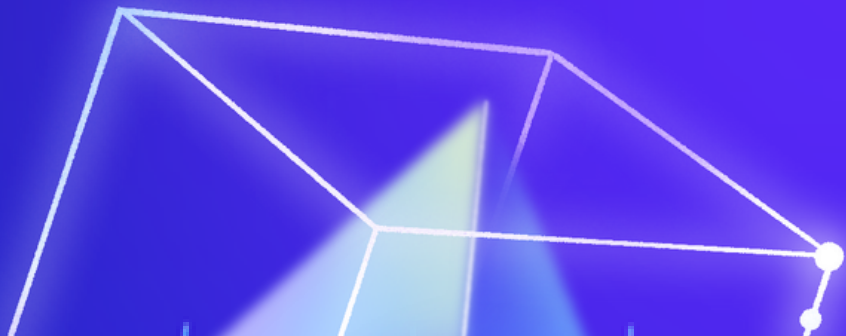
CLAUDESTAY

Simplify Your Stay with Claude 3 Hotel
Locator

24 hours Hackathon



lab
lab.
ai

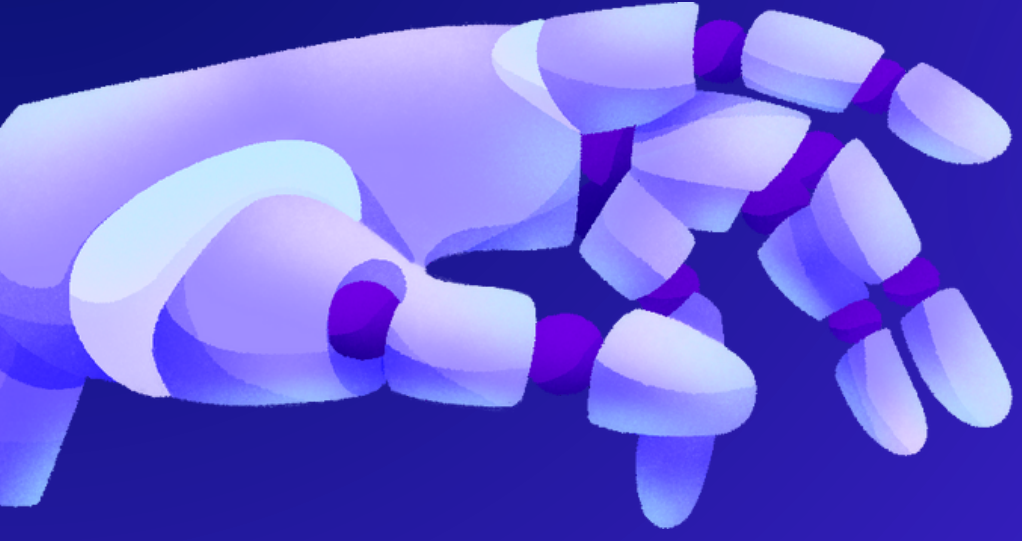




TEAM MEMBERS

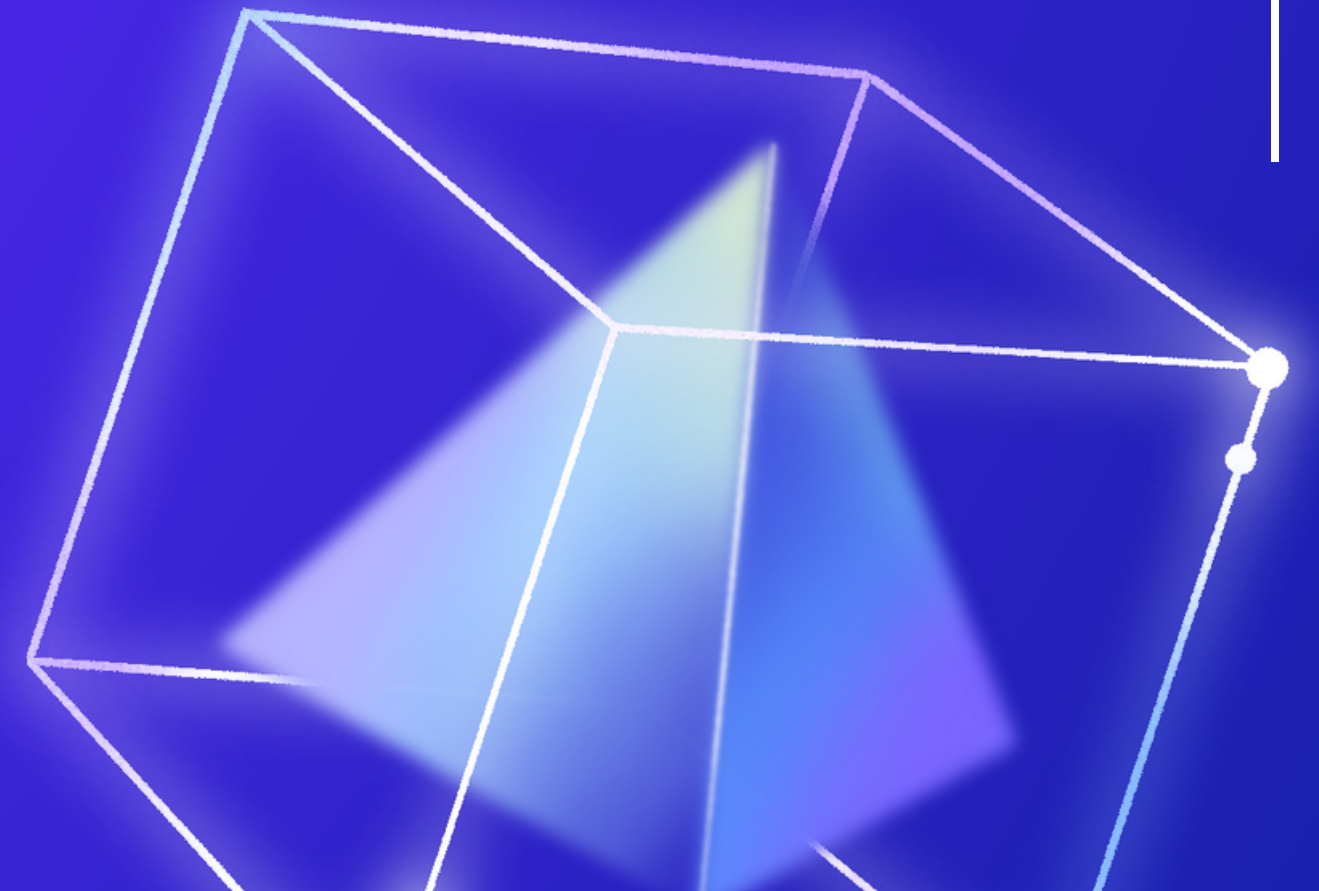
- 👉 Ahmad Talha Ansari
- 👉 Alina Ayub Mayo
- 👉 Wajiha Saleem
- 👉 Rafiea Ashraf
- 👉 Rishika Rai
- 👉 Muhammad Shahzad



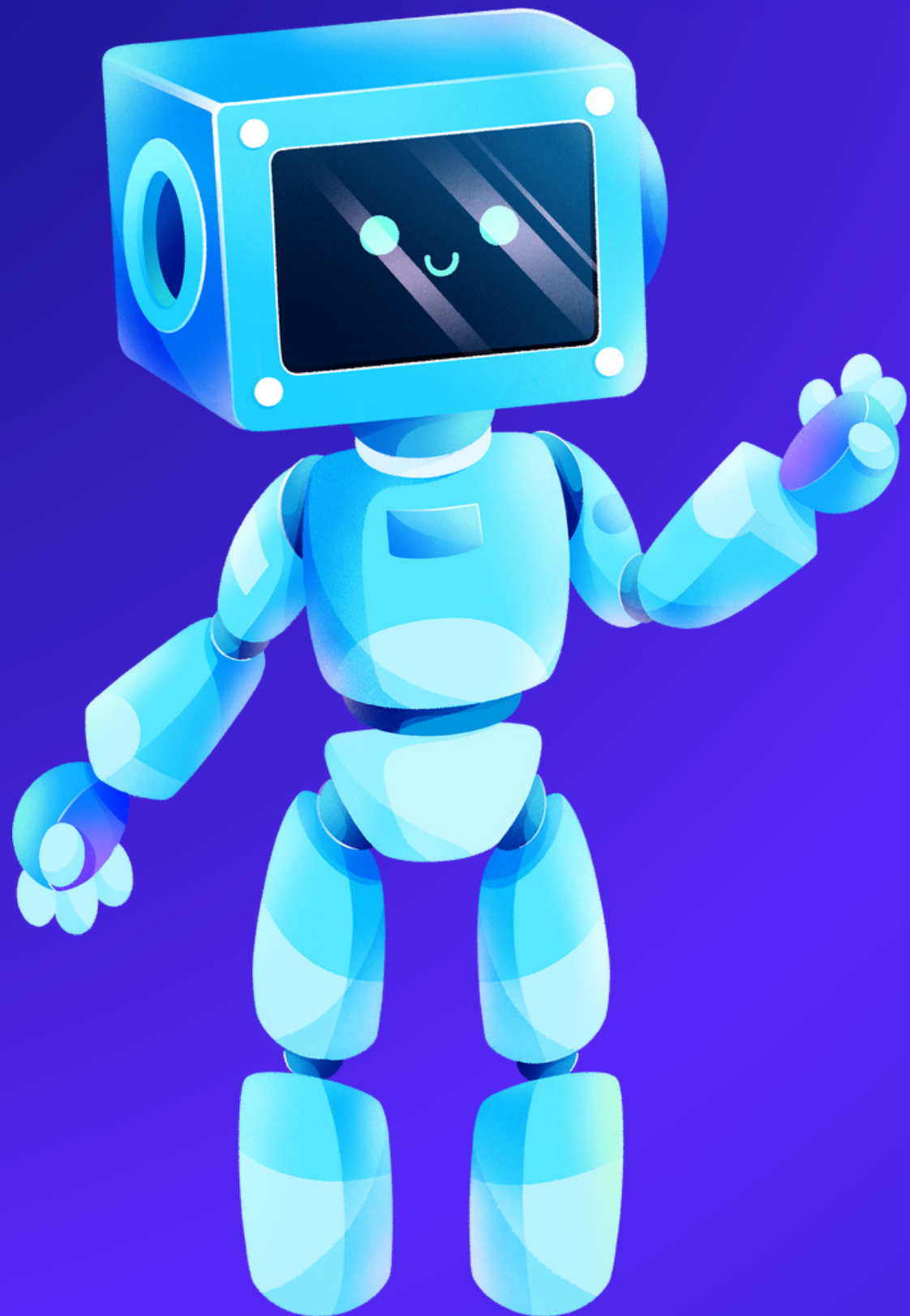


AGENDA

- Problem Statement 01
- Solution 02
- Methodology 03
- Tools and Technology 04
- The End 05



THE PROBLEM



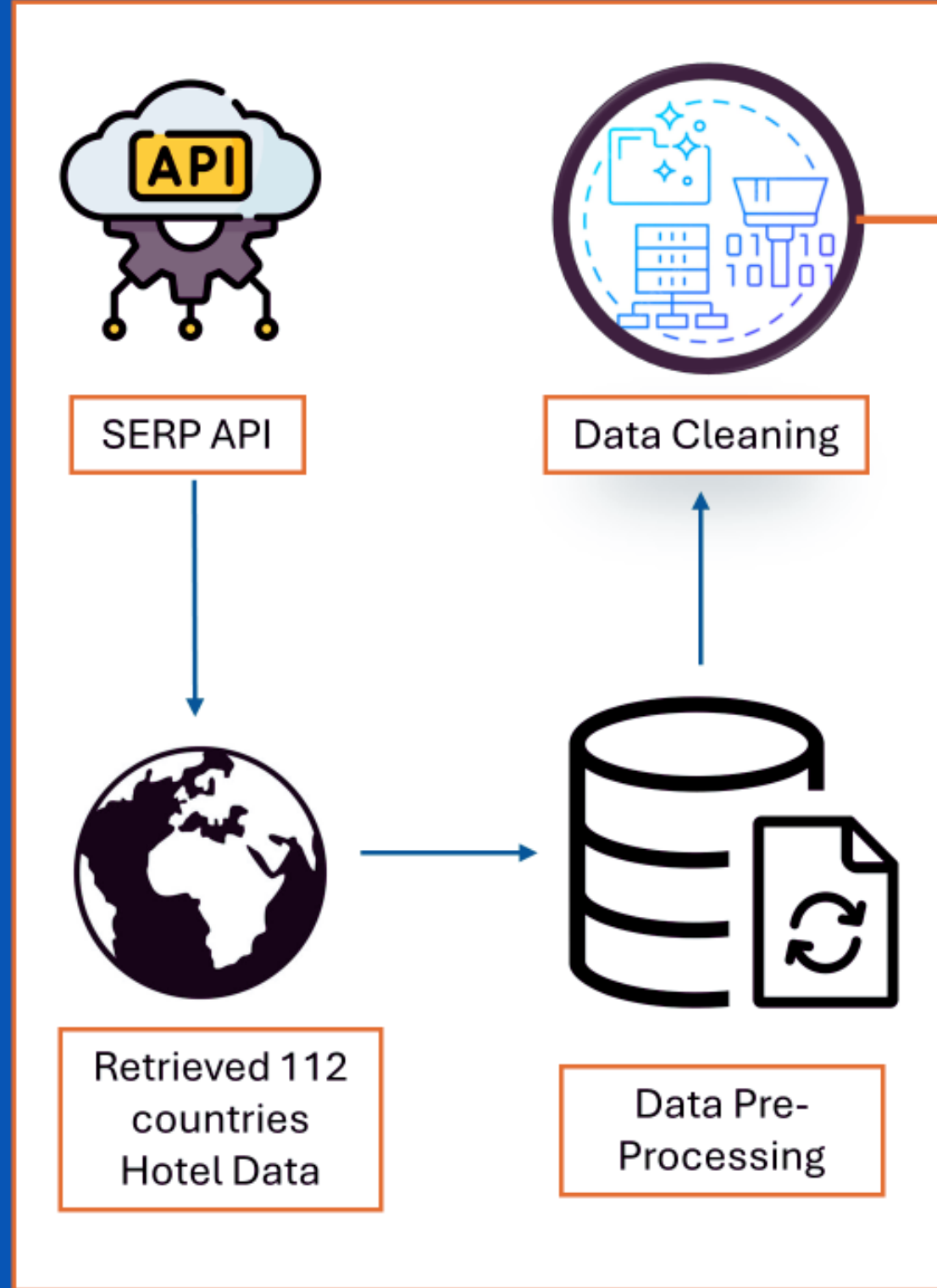
IN THE REALM OF HOTEL ACCOMMODATION, THERE'S A PREVAILING CHALLENGE IN SWIFTLY LOCATING AND PRESENTING PRICE INFORMATION FOR HOTELS WITH SPECIFIC STAR RATINGS IN DESIGNATED AREAS. THIS LEADS TO FRUSTRATION AMONG TRAVELERS, WHO MUST INVEST SIGNIFICANT TIME IN SEARCHING AND OFTEN ENCOUNTER UNRELIABLE RESULTS. CONSEQUENTLY, IT BECOMES DIFFICULT FOR THEM TO MAKE INFORMED DECISIONS ABOUT WHERE TO STAY.

SOLUTION

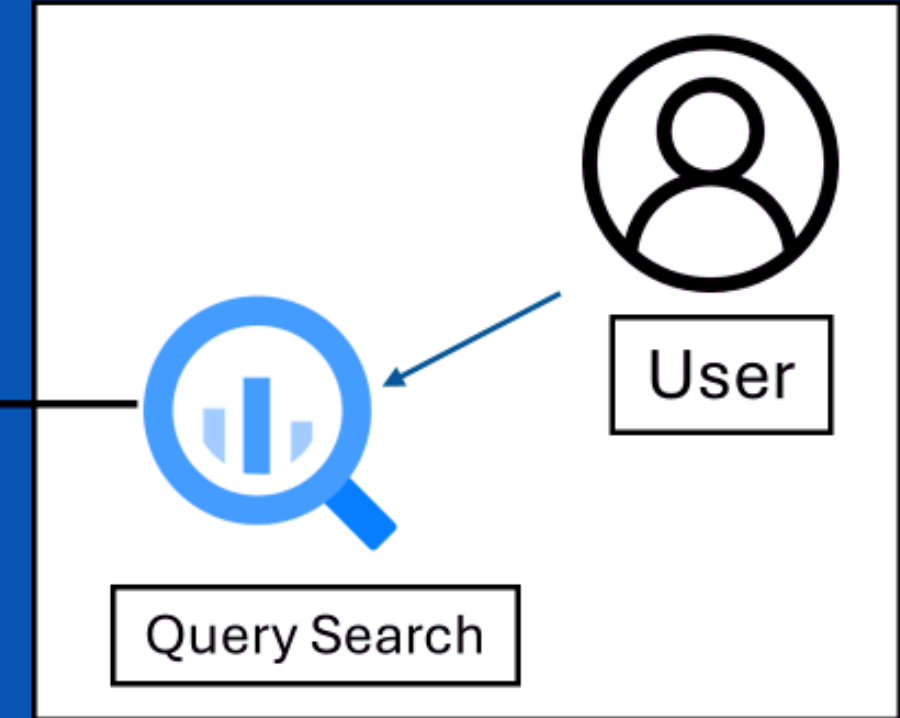


Introducing the Claude 3 Hotel Locator – a groundbreaking solution seamlessly merging Claude 3's intelligence with the SERP API for unparalleled accuracy. We collected data from SERP API and then cleaned it, place it into a lightning-fast vector database using Gemini embeddings model. When you query, relevant documents are extracted from vector database and processed by the Claude3-opus model, delivering tailored results with a streamlined interface.

STEP NO 1

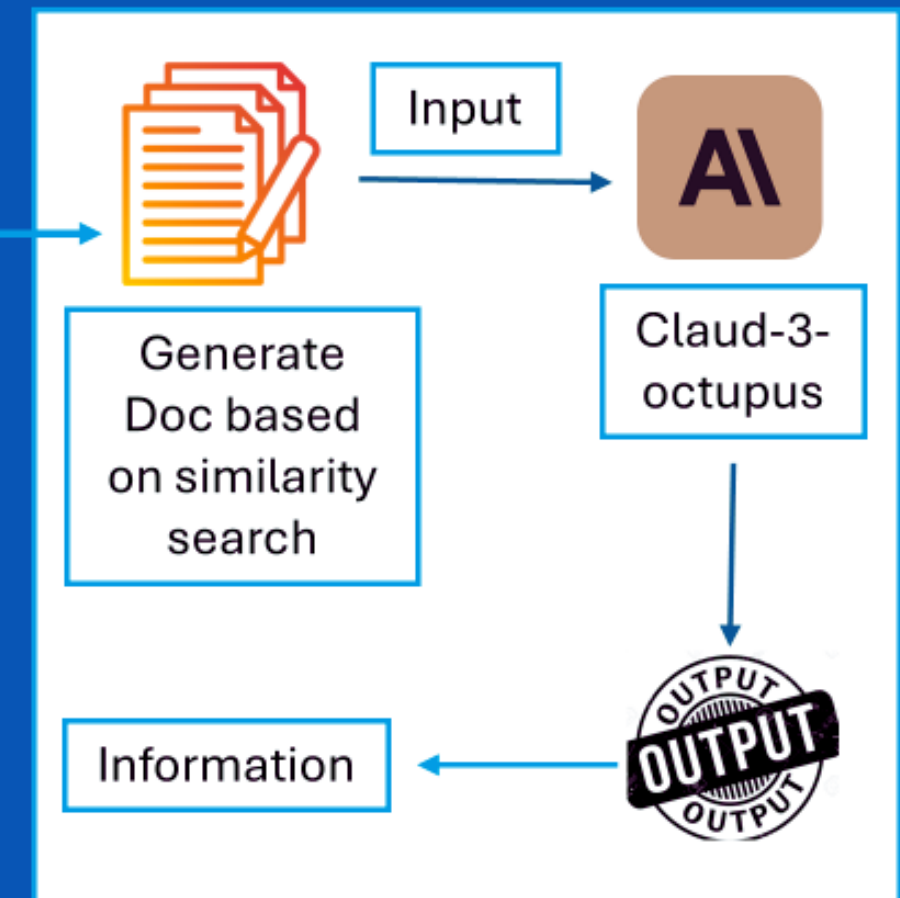


STEP NO 2

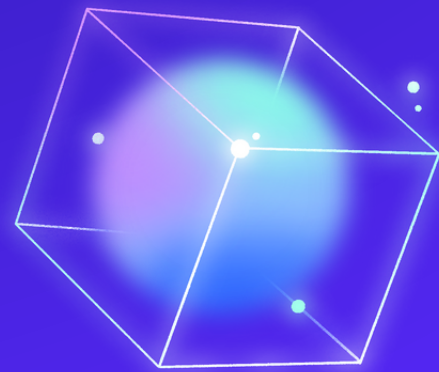
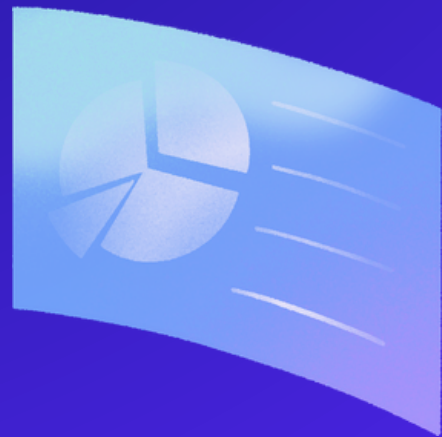


Vector Database

STEP NO 3



TOOLS AND TECHNOLOGIES



- Claude 3
- Streamlit
- Serp API
- Gemini Embeddings
- Text to Audio

THANK YOU!

