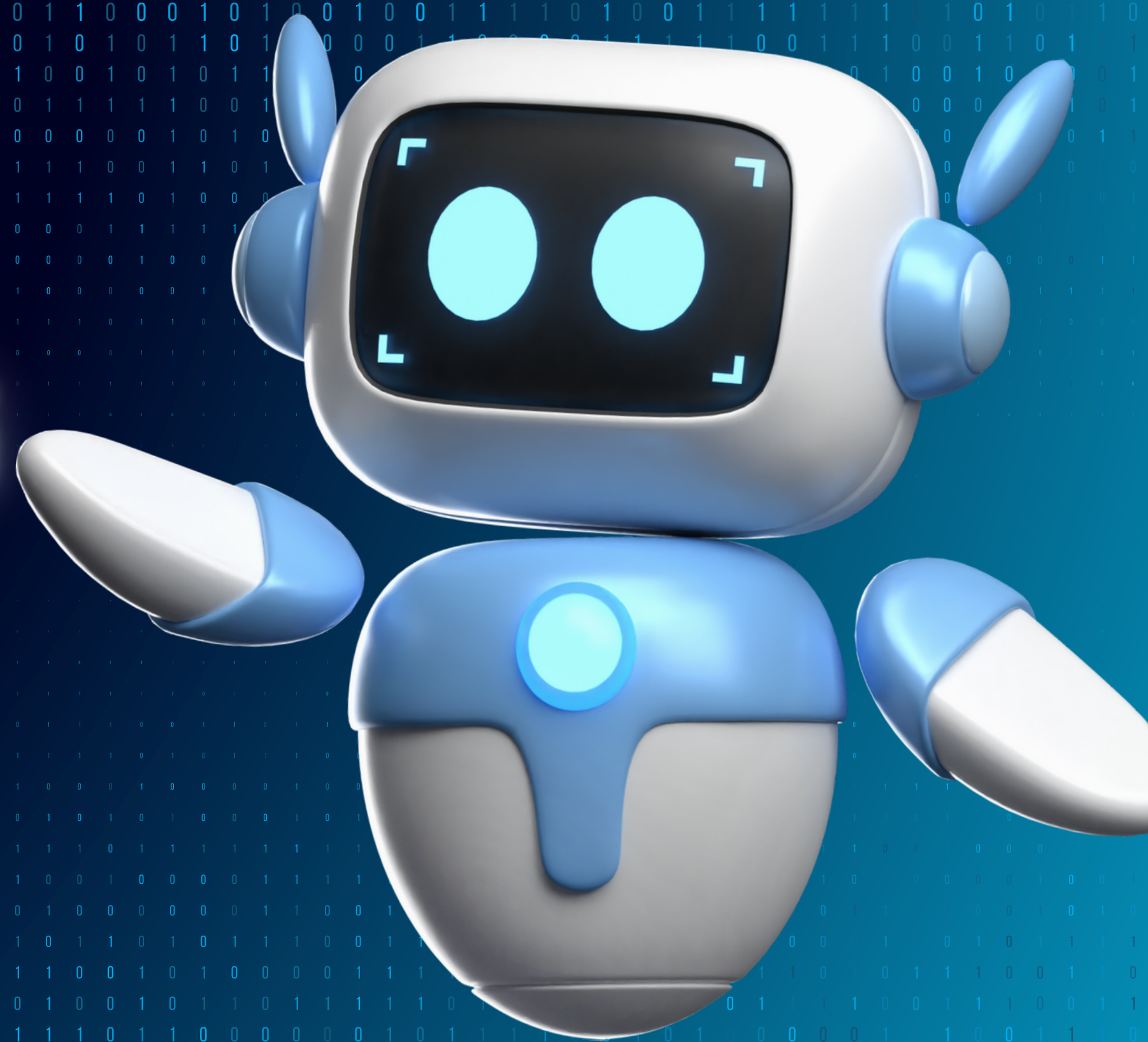


ADAPT-A-RAG

an Adaptable Retrieval Toolkit





CONTENTS

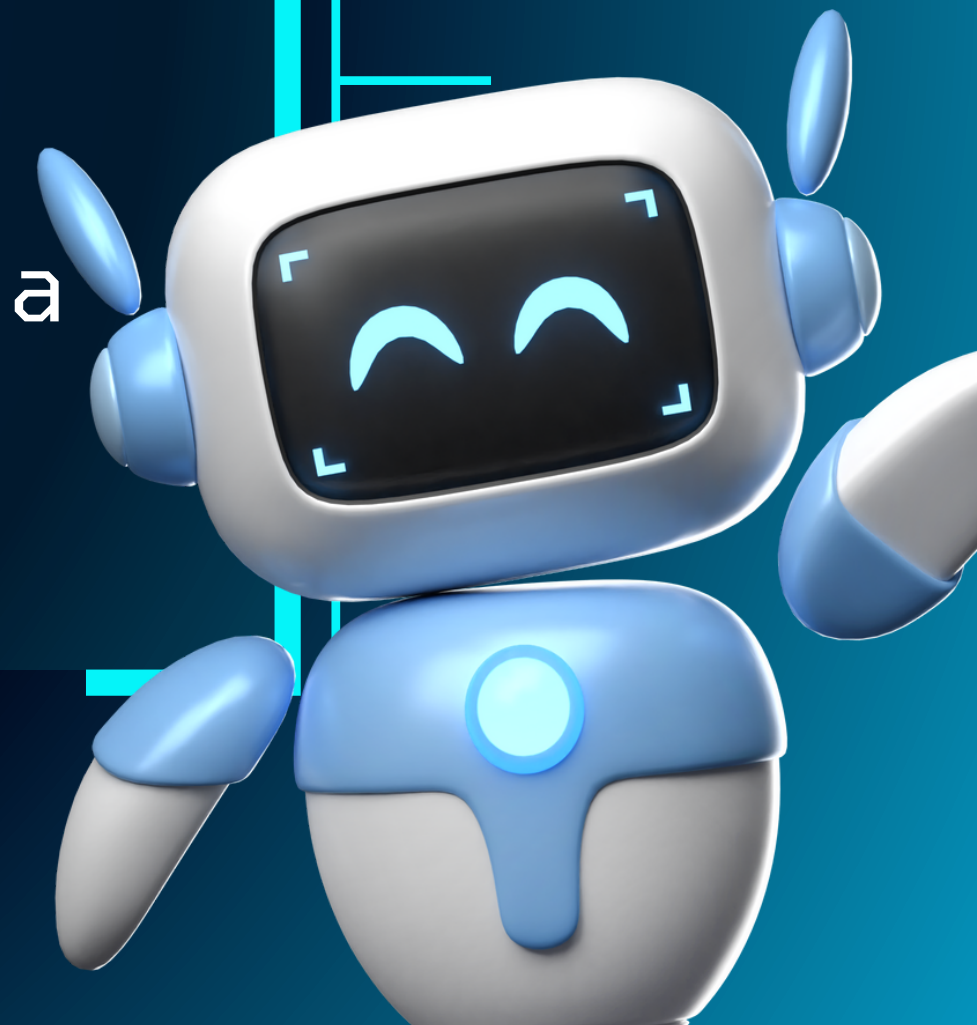
- ① What is ADAPT-A-RAG?
- ② The role of RAG in Language Models
- ③ Benefits of RAG tools
- ④ Potential Problems
- ⑤ ADAPT-A-RAG Practical Uses



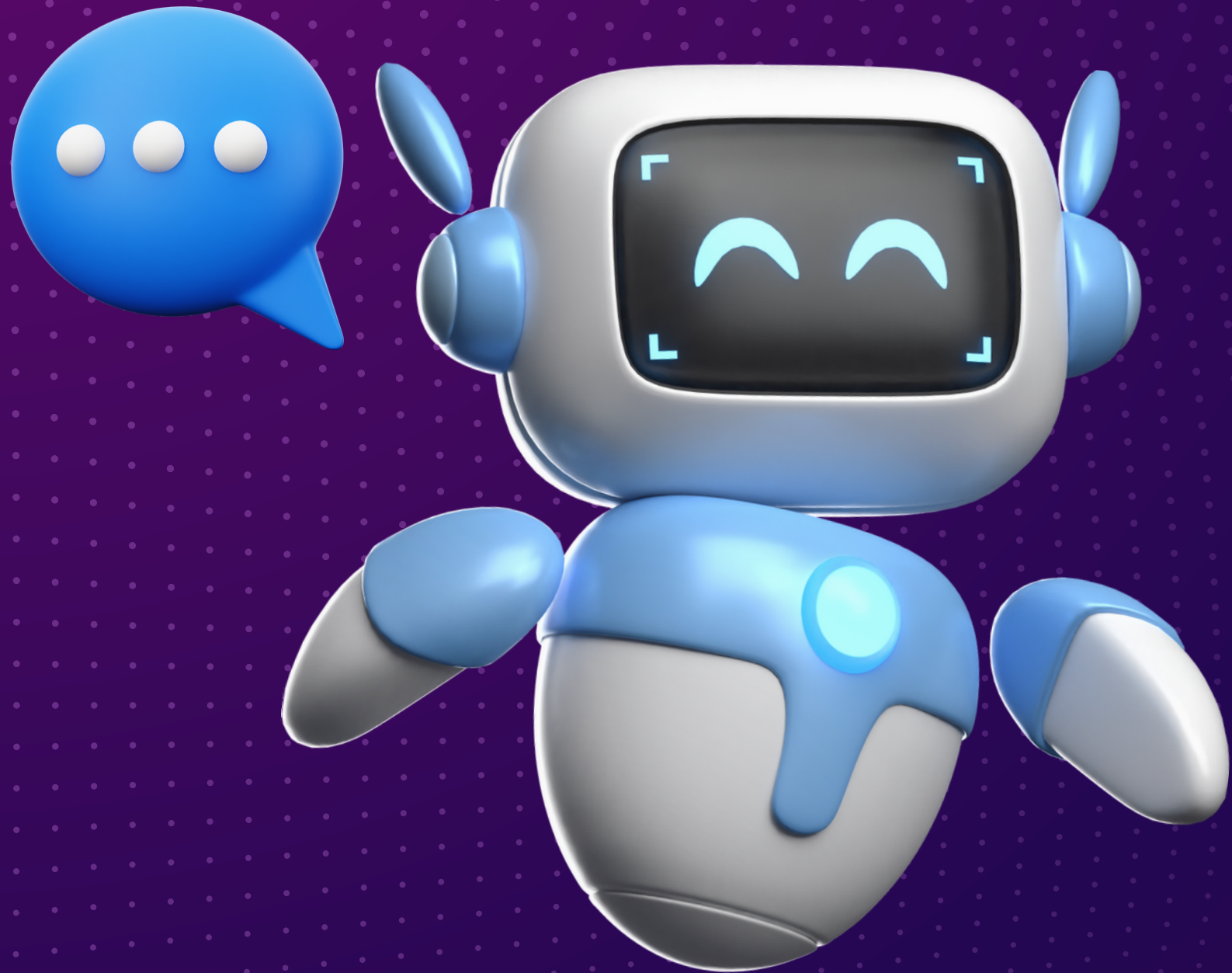
WHAT IS ADAPT-A-RAG?

It takes data, creates synthetic data, and uses that synthetic data to optimize the prompts of the retrieval augmented generation application.

The application recompiles itself every run in a unique and adapted way to the user query.



② THE ROLE OF RAG IN LANGUAGE MODELS



PERSONALISED EXPERIENCES

DATA CORRECTION

ADAPTABLE TO NEW TASKS

③ BENEFITS OF RAG TOOLS

ENHANCED DATA INTEGRITY

RAG tools can identify and correct grammar and style errors, helping produce more polished written responses.

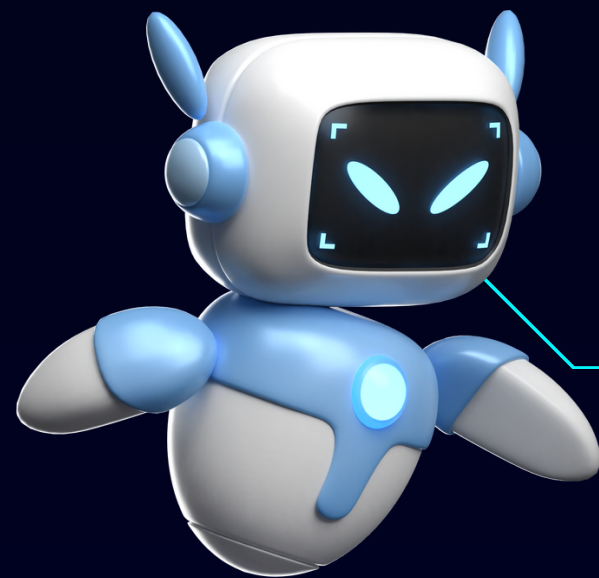
ENHANCED MODEL RESPONSES

RAG tools can recognise data and provide guidance on relevancy, aiding models in developing better responses.

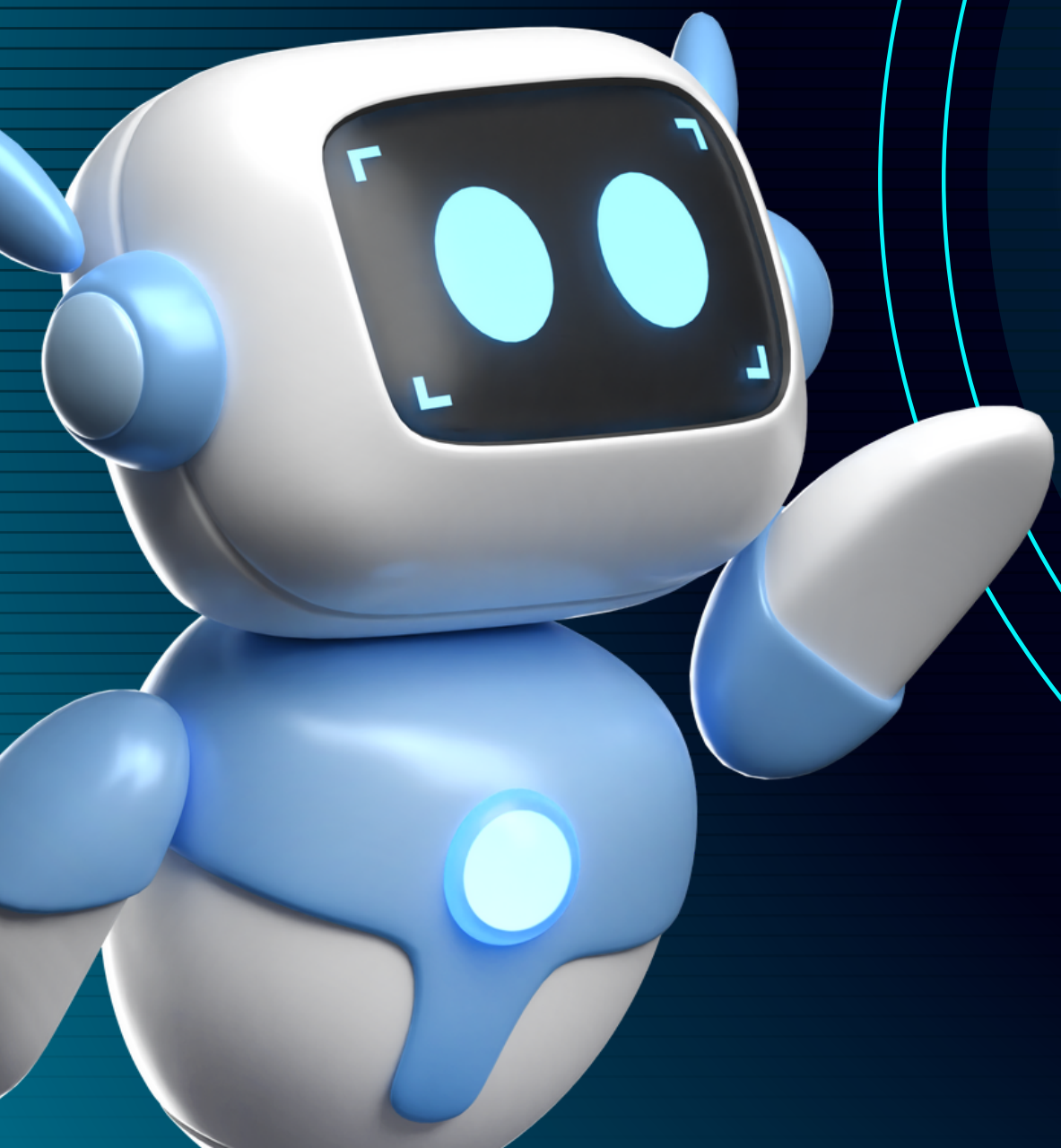
④ POTENTIAL PROBLEMS



DATA ERRORS AND FORMAT

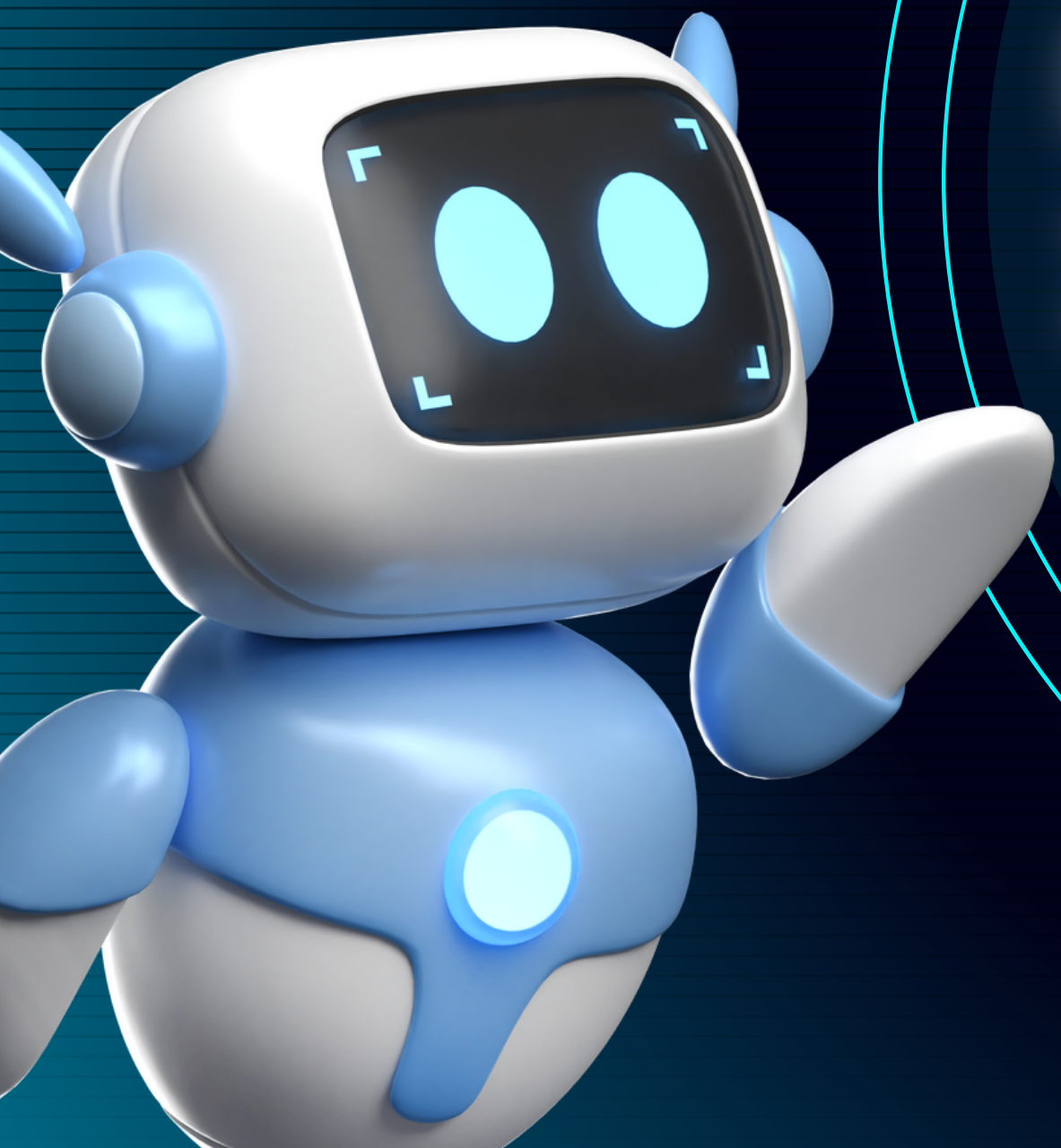


PRIVACY AND DATA CONCERNS

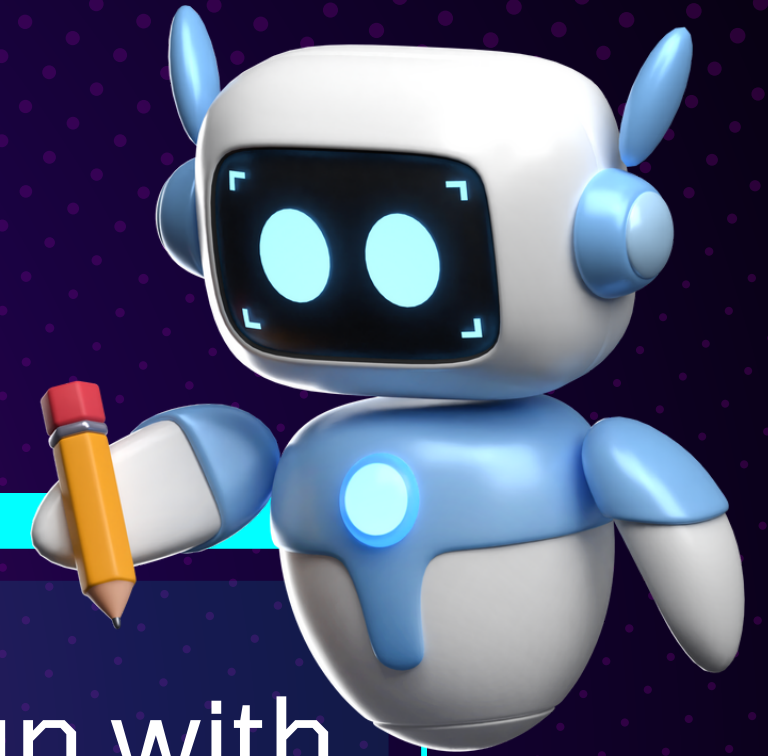


RAG SHOULD
COMPLEMENT
MODELS...





NOT REPLACE
IT ENTIRELY



It is important to choose RAG tools that align with the specific language model objectives.

5 ADAPT-A-RAG PRACTICAL USES

