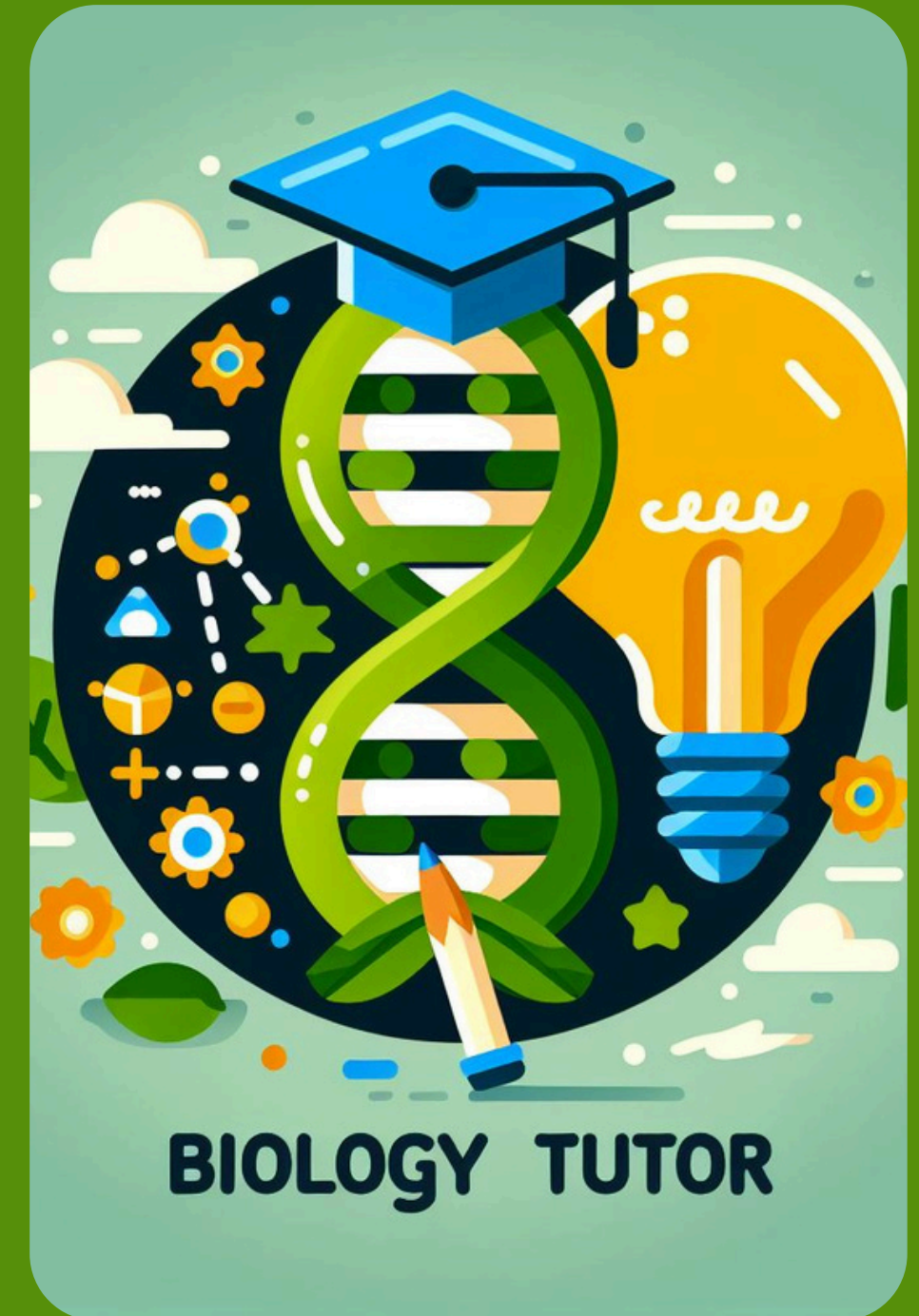


Biology Buddy

AI-based biology tutor app



problem



- Accessibility to Quality Tutoring
- Complexity of Biological Concepts
- Lack of Immediate Feedback:

By addressing these challenges, the Biology Tutor App empowers students to enhance their understanding, confidence, and performance in biology, ultimately supporting their academic success and future endeavors in the field.

Welcome to Our AI Biology Tutor



Interactive AI Tutors for Biology Students



**Revolutionizing Biology
Learning Experience**

The Future of Learning Biology

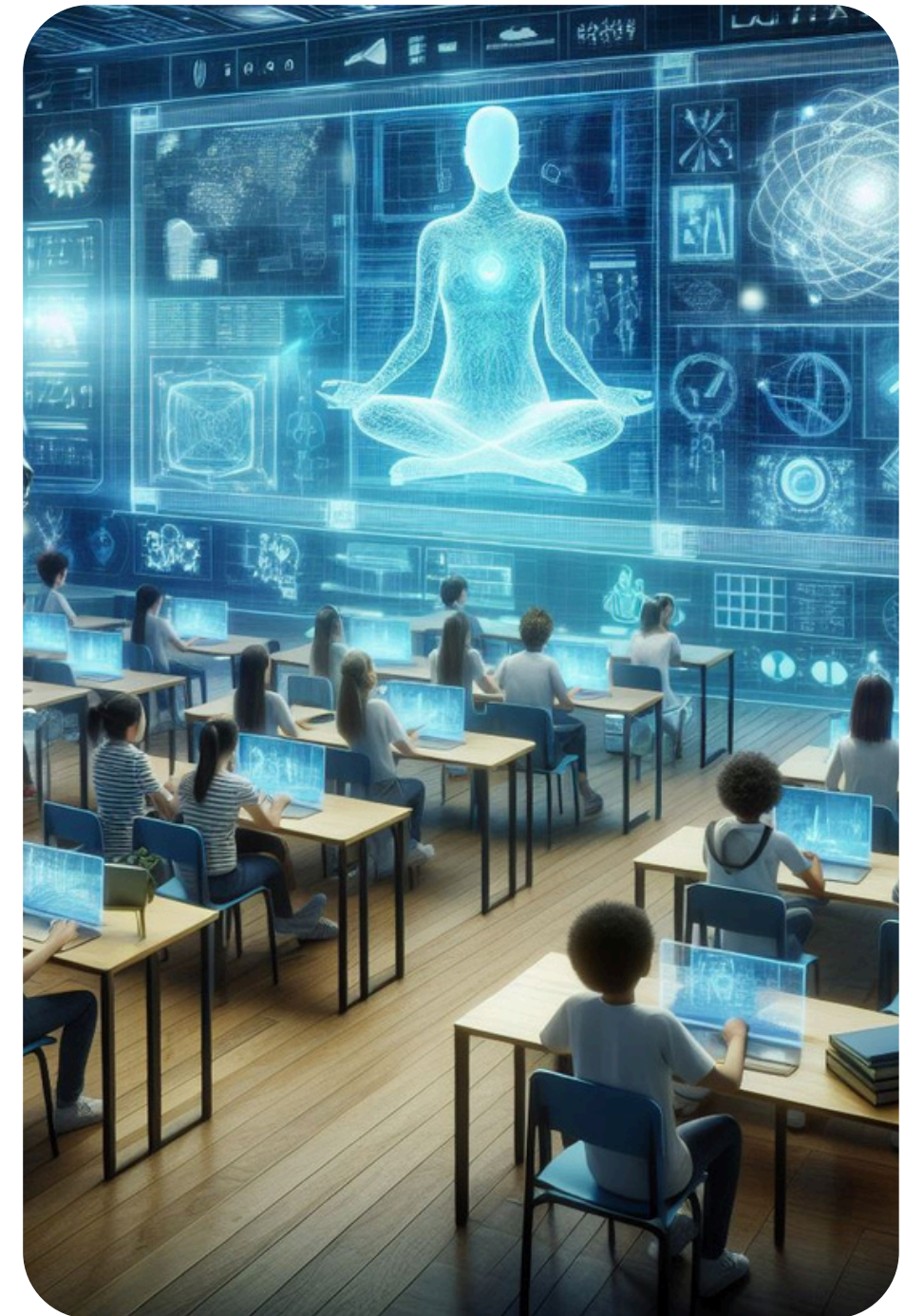
Revolutionizing The Way Students Learn Biology. Our cutting-edge AI tutor App offers personalized learning and adaptive teaching to help students grasp complex concepts in real-time. With interactive quizzes and detailed feedback, students can take control of their own learning experience and excel in their Biology courses. Say goodbye to rote memorization and hello to a smarter way of learning!

Revolutionize Biology Studies with AI Tutor App

Our technologies use

- Llama-index
- GPT 3.5
- truelens/ tonic.ai,
- chroma DB

this app can be improved using
Pine cone DB and PortKey

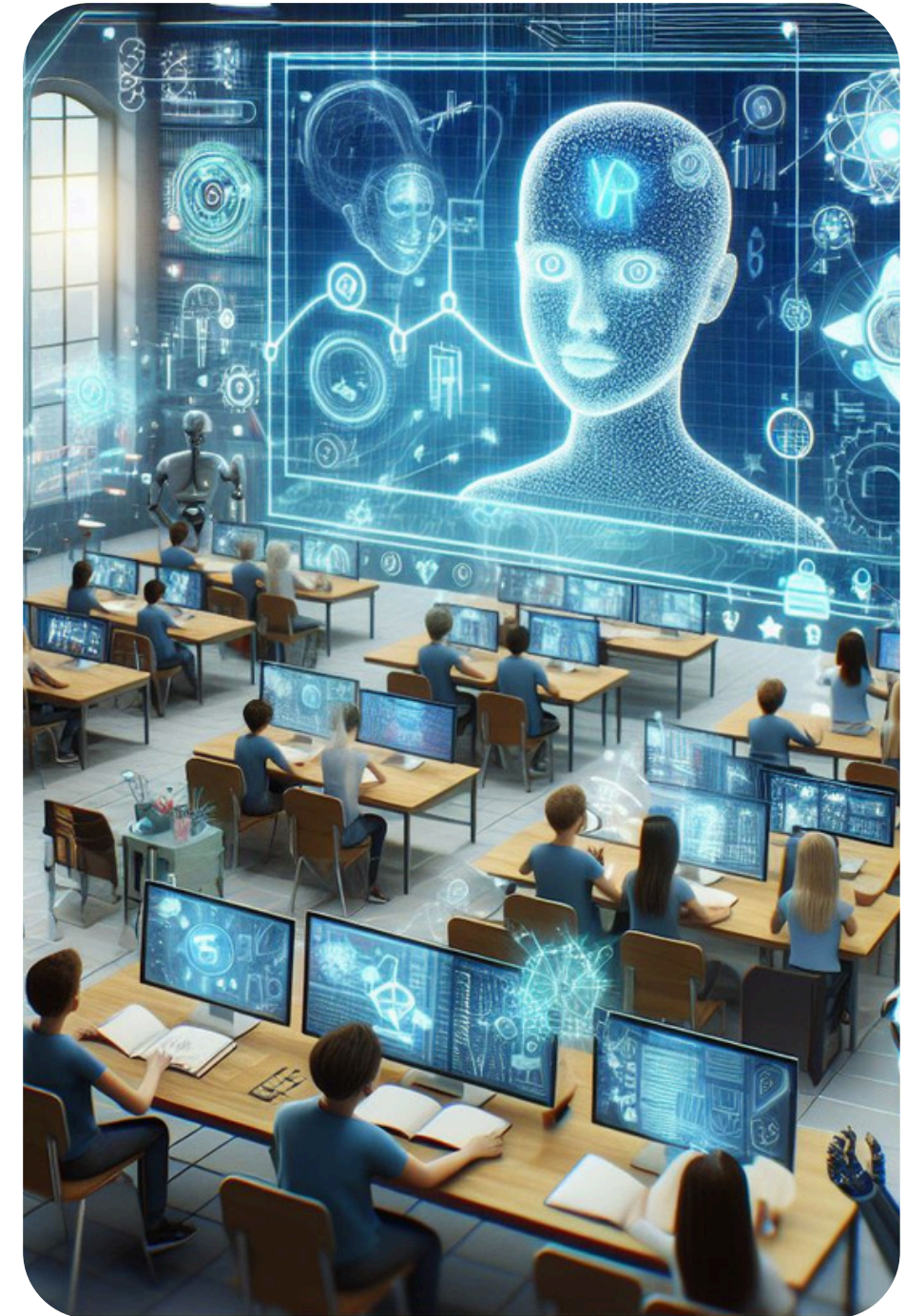


Our technologies used are

- Gpt 3.5 - for getting the chat Interface
- truelens - to evaluate responses the application gives us
- chroma DB - Vector Database

this app can be improved using PineconeDB and PortKey (For scalability and load balancing)- in production

This app can be further improved using GPT vision



Users can chat with the AI biology tutor which is chat-gpt based and learn by their own phase according to the Curriculum

This app can be further using gpt-for-vision or SORA kind of models which can generate accurate Diagrams/videos which shows the student about the biological processes



Get started on learning smarter



Demonstration

The screenshot displays a VS Code CodeSpaces environment for a project named "biology-tutor-v4". The interface is divided into several panels:

- EXPLORER:** Shows the project structure with files like `__pycache__`, `.devcontainer`, `venv`, `.env`, `.gitattributes`, `.gitignore`, `app.py`, `config.py`, `data_manager.py`, `default.sqlite`, `feedback_manager.py`, `qanda.json`, `query_manager.py`, `requirements.txt`, `setup.py`, and `streamlit_app.py`.
- Code Editor:** Displays the `feedback_manager.py` file with the following Python code:

```
7 class FeedbackManager:
14     def setup_feedback(self):
29         Feedback(self.provider.
30             .on_input()
31             .on(self.context)
32             .aggregate(np.mean)
33         )
34     def record_query(self, query):
35         with TruLlama(self.query_er
36             self.query_engine.query
37         return recording.records
```
- Simple Browser:** Shows a web browser window with the URL `https://friendly-halibut-qrx9w6qvrxc4g-8501.app.github.dev/`. The browser status is "RUNNING..." and there is a "Stop TRU Dashboard" button.
- TERMINAL:** Shows the following output:

```
✓ In relevance, input prompt will be set to __record__.main_input or `Select.RecordInput` .
✓ In relevance, input response will be set to __record__.main_output or `Select.RecordOutput` .
✓ In context_relevance_with_cot_reasons, input question will be set to __record__.main_input or `Select.RecordInput` .
✓ In context_relevance_with_cot_reasons, input context will be set to __record__.app.query.rets.source_nodes[:].node.text .
```

The bottom status bar shows "Codespaces: friendly halibut", "main*", "0: 11", "0 0", "6", and "Layout: US".

Demonstration

Browser navigation bar showing the URL `https://friendly-halibut-qrx9w6qvrxc4g-7000.app.github.dev` and various browser tabs including "Sign in to GitHub ...", "Rupavahini TV Onli...", "How to Use the ESP...", "Google Docs", "Goals | ClickUp Tut...", "Inbox (541) - jkwap...", "MGTE 31212(2021):...", and "Colab Notebooks -..."



Leaderboard

Apps

App Leaderboard

Average feedback values displayed in the range from 0 (worst) to 1 (best).

LlamaIndex_App1 [?]

Records	Average Laten...	Total Cost (USD)	Total Tokens	groundedness...	relevance
1	66	\$0.01	8.14k	1.0 ✓ high	1.0 ✓ high

Select App

trulens_eval
v0.28.2

Share Feedback