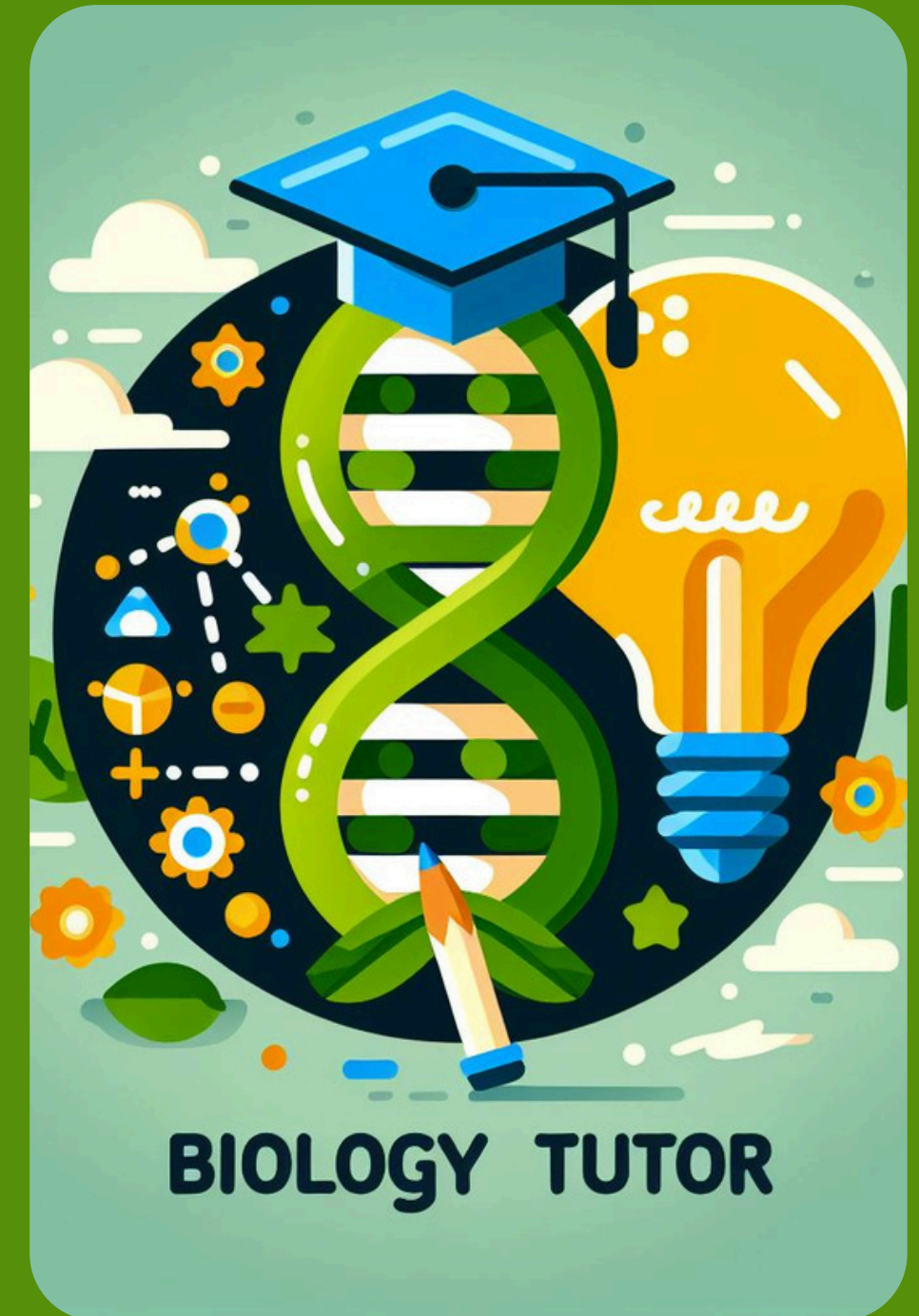


# Biology Buddy

AI-based biology tutor app



# problem



- Accessibility to Quality Tutoring
- Complexity of Biological Concepts
- Lack of Immediate Feedback:

By addressing these challenges, the Biology Tutor App empowers students to enhance their understanding, confidence, and performance in biology, ultimately supporting their academic success and future endeavors in the field.

# Welcome to Our AI Biology Tutor





# Interactive AI Tutors for Biology Students



**Revolutionizing Biology  
Learning Experience**

# The Future of Learning Biology

Revolutionizing The Way Students Learn Biology. Our cutting-edge AI tutor App offers personalized learning and adaptive teaching to help students grasp complex concepts in real-time. With interactive quizzes and detailed feedback, students can take control of their own learning experience and excel in their Biology courses. Apart from Q and A students can Interact with videos in their language and ask questions from videos. Say goodbye to rote memorization and hello to a smarter way of learning!

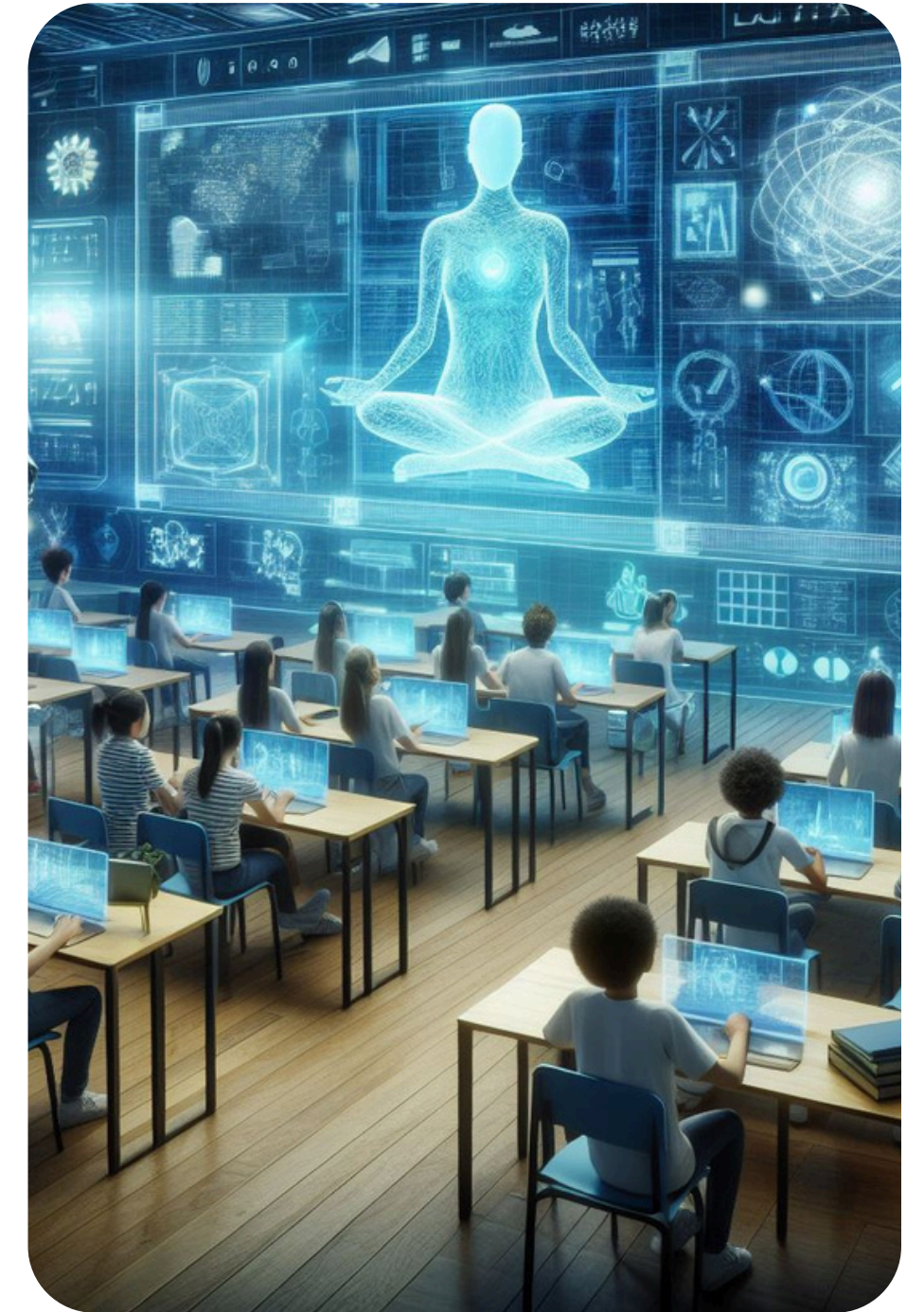


# Revolutionize Biology Studies with AI Tutor App

Our technologies use

- google-cloud-aiplatform
- cohere
- weaviate-client
- openai stability-sdk
- streamlit
- Gpt 3.5 /4.0

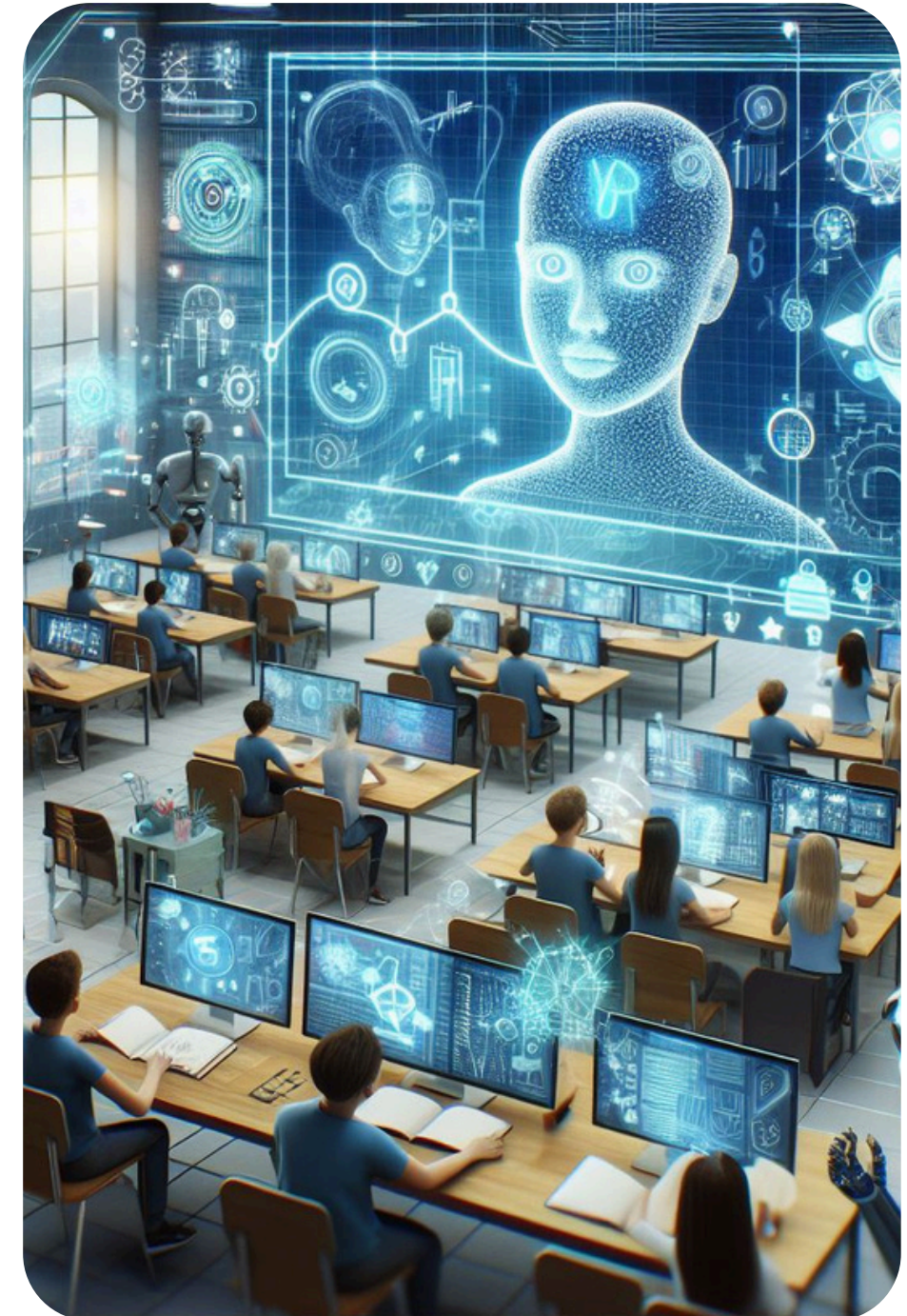
this app can be improved using  
Pine cone DB and PortKey





Our technologies used are

- Gpt 4o - for getting the chat Interface
- truelens - to evaluate responses the application gives us
- chroma DB - Vector Database





Users can chat with the AI biology tutor which is chat-gpt based and learn by their own phase according to the Curriculum

Now users can generate video subtitles for existing youtube videos from other languages and chat with videos

This app can be further using gpt -for vision or SORA kind of models which can generate accurate Diagrams/ videos which shows the student about the biological processes





# Get started on learning smarter



# Demonstration


The screenshot displays a VS Code editor window for a project named "BIOLOGY-TUTOR-V4 [CODESPACES: FRIENDLY HALIBUT]". The interface is divided into several panels:

- EXPLORER:** Shows the project structure with files like `__pycache__`, `.devcontainer`, `venv`, `.env`, `.gitattributes`, `.gitignore`, `app.py`, `config.py`, `data_manager.py`, `default.sqlite`, `feedback_manager.py`, `qanda.json`, `query_manager.py`, `requirements.txt`, `setup.py`, and `streamlit_app.py`.
- EDITOR:** Displays the `feedback_manager.py` file, which contains a `FeedbackManager` class. The class has two methods: `setup_feedback` and `record_query`. The `setup_feedback` method initializes a `FeedbackManager` instance and sets up the `on_input` and `on` methods. The `record_query` method uses `TruLlama` to process a query and returns recording records.
- Simple Browser:** Shows a web application running at `https://friendly-halibut-qxrx9w6qvrcx4g-8501.app.github.dev/`. The application is in a "RUNNING..." state, and there is a "Stop TRU Dashboard" button.
- TERMINAL:** Displays the output of the application, showing several status messages with green checkmarks:
  - In relevance, input prompt will be set to `__record__.main_input` or ``Select.RecordInput``.
  - In relevance, input response will be set to `__record__.main_output` or ``Select.RecordOutput``.
  - In context\_relevance\_with\_cot\_reasons, input question will be set to `__record__.main_input` or ``Select.RecordInput``.
  - In context\_relevance\_with\_cot\_reasons, input context will be set to `__record__.app.query.rets.source nodes[:].node.text`.

The bottom status bar shows the current file is `main*` and the terminal is running on a Linux system.



# Demonstration



trulens

Leaderboard

Apps

trulens\_eval  
v0.28.2

Share Feedback

App Leaderboard

Average feedback values displayed in the range from 0 (worst) to 1 (best).

LlamaIndex\_App1

Records	Average Laten...	Total Cost (USD)	Total Tokens	groundedness...	relevance
1	66	\$0.01	8.14k	1.0 ✓ high	1.0 ✓ high

Select App