

AGILE LOOP HACKATHON



Agile Loop





SARAH

PROBLEM STATEMENT

In the modern world, managing various tasks, meetings, and communications can be overwhelming.

Existing AI assistants lack seamless integration and a friendly, conversational approach.

High costs and limited context windows of current LLMs restrict functionality.





SOLUTION



Agile Loop



Desktop application that combines advanced voice interaction with robust task management and communication tools. Emphasize the friendly, conversational interface that makes the assistant feel like a friend.

Voice Assistant

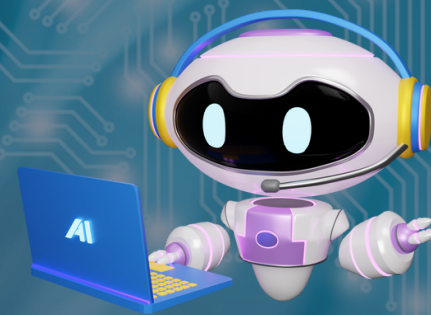


CORE FEATURES



Voice Interaction

Speech-to-text model for input and text-to-speech generation for output.



Casual Discussion

Engage in natural, friendly conversations with the assistant.



Zoho CRM

Handle customer relations seamlessly.



Google Meet Integration

Schedule and join meetings with voice commands.



Google Agenda

Manage your calendar effortlessly.



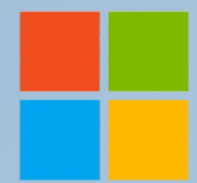
Google Sheets, Docs, and Slides

Connects with Gmail to handle your emails efficiently.

A person in a dark suit and tie is holding a white smartphone in their right hand. Above the phone, a glowing blue and white graphic of a brain composed of circuit lines is visible. The background is a solid dark blue.

DEMONSTRATION

Technologies used



Microsoft



Gemini Flash

ElevenLabs



Z O H O



Google Docs



Google Slides



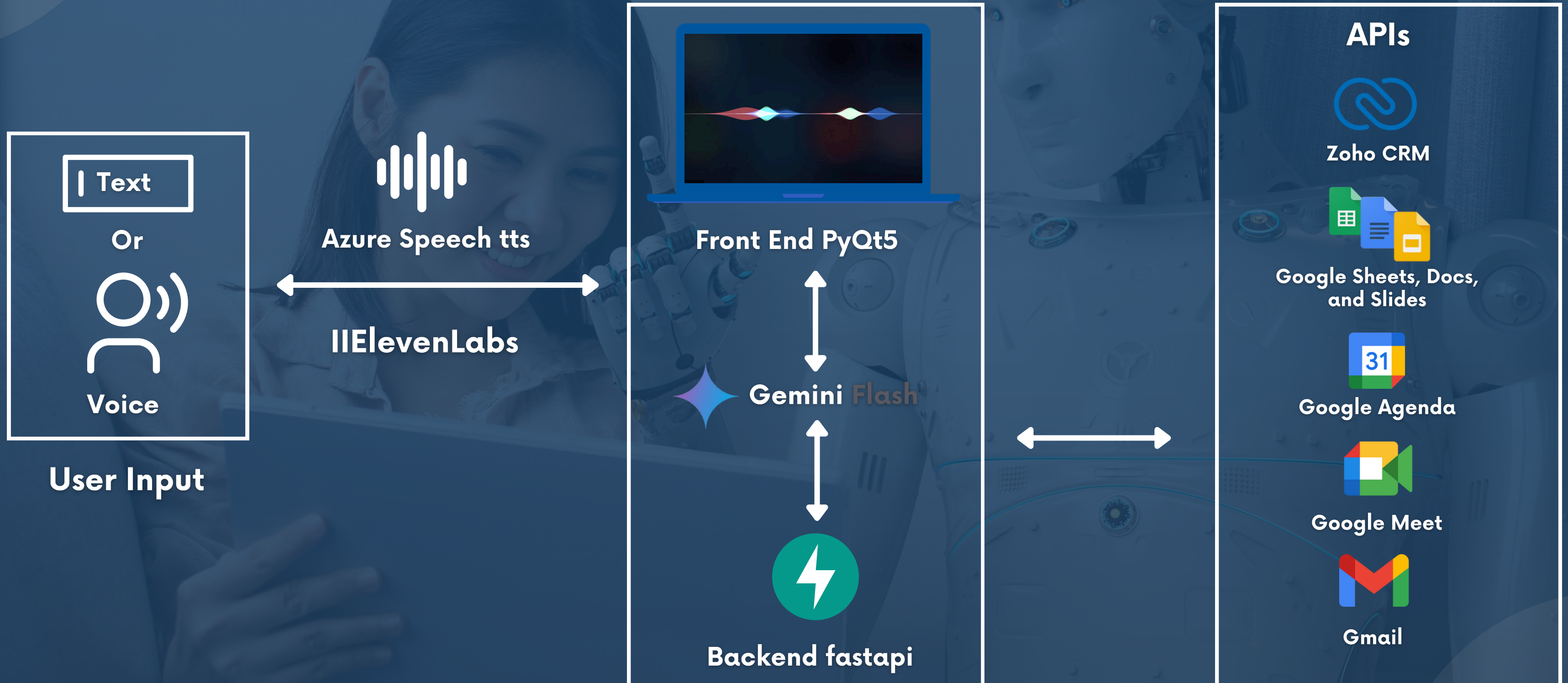
Google Sheets



Zoho
CRM






ARCHITECTURE



Business Value



LLMs comparaison

	 GPT-4	 Gemini Flash	 Llama 3 70B
Input Context Window	8,192 Tokens	1M Tokens	8,000 Tokens
Cost of input	\$30.00 per million tokens	\$0.13 per million tokens	Pricing not available.
Cost of output	\$60.00 per million tokens	\$0.38 per million tokens	Pricing not available.

TEAM MEMBERS



Mohamed Regaya



Yahya Samet



Aya Omezzine



Aziz Omezzine



Mohamed Hachicha

CONCLUSION

The background is a deep blue gradient. It features several bright, glowing light rays that originate from a central point and radiate outwards towards the corners of the frame. Scattered throughout the background are numerous small, faint blue dots and thin, light blue lines that connect some of these dots, creating a network-like or starry effect. On the left side, there is a faint, semi-transparent wireframe mesh of a human figure, possibly representing a digital or futuristic theme.

THANK YOU!



Agile Loop