

Focus Friend

Understand ADHD. Test
Yourself. Track with AI.

BY
Team : AI FLOW

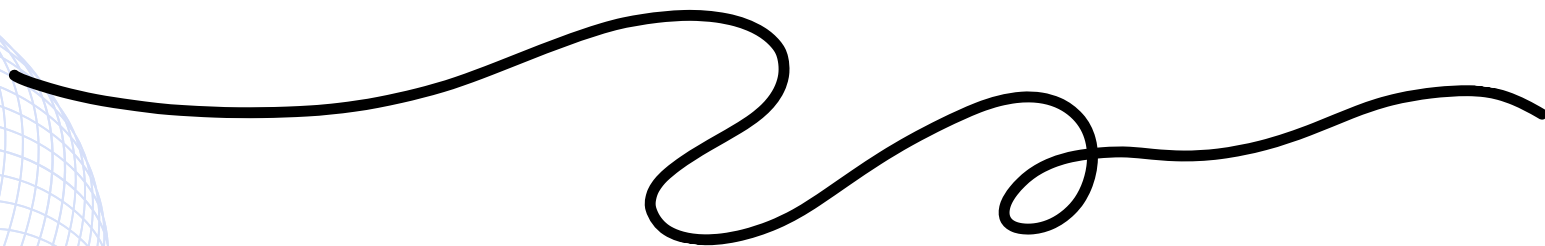


TABLE OF CONTENTS

- Introduction
- Problem description
- BMC
- Conclusion

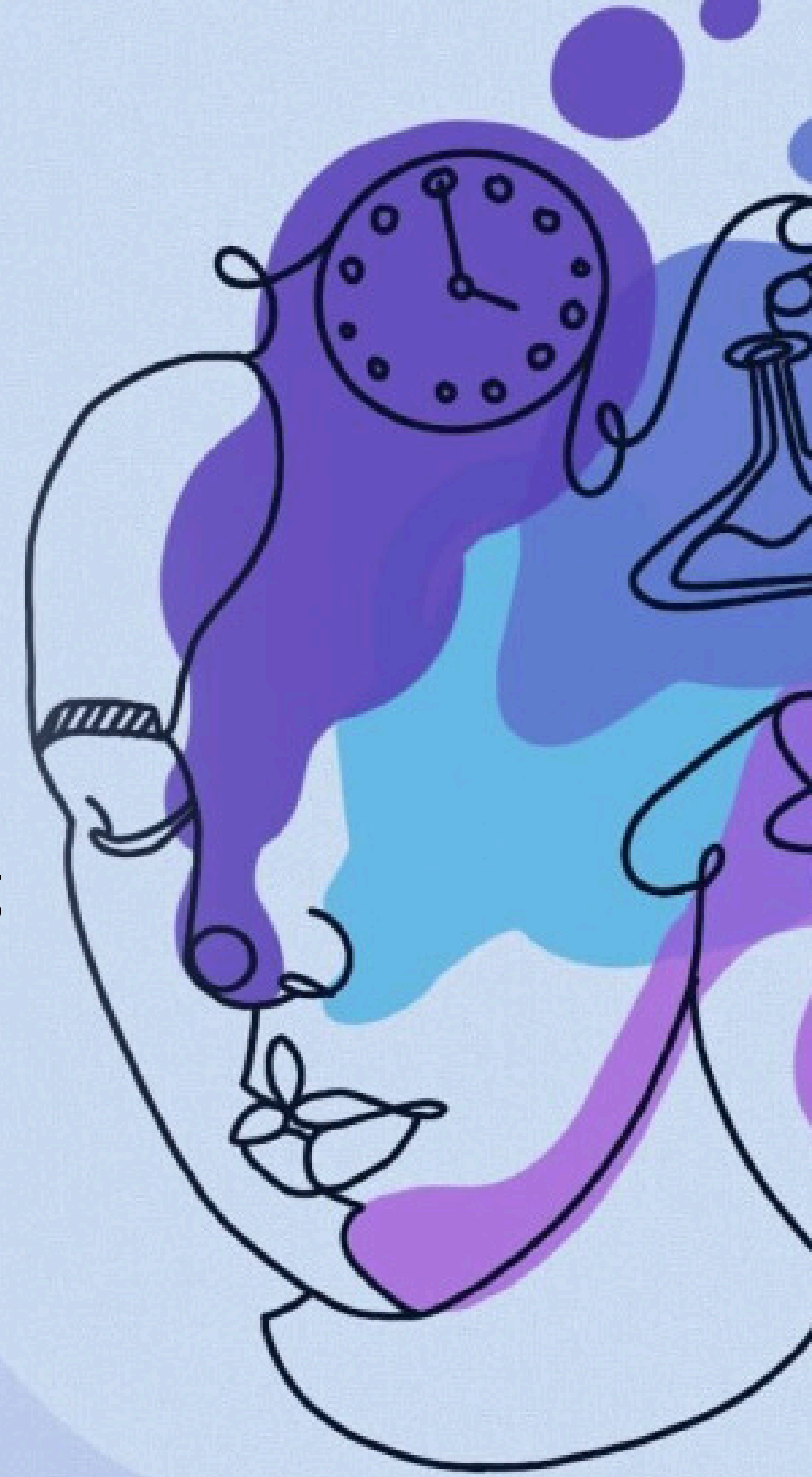
INTRODUCTION

What is ADHD? Attention-Deficit/Hyperactivity Disorder (ADHD) is a neurodevelopmental disorder characterized by symptoms such as inattention, hyperactivity, and impulsivity. It affects daily functioning and can impact academic, professional, and social aspects of life.



PROBLEM DEFINITION

- **Prevalence and Impact:** ADHD affects 5-10% of children and 2-5% of adults worldwide, impacting daily life, academics, and work.
- **Current Diagnostic Methods:** Traditional methods are lengthy, costly, and require multiple visits, making them inaccessible.
- **Challenges for Individuals:** People face stigma, long wait times, and lack of resources, delaying treatment and support.



FOCUS FREIND

A MODERN SOLUTION

- Two-Phase Testing Process:
- Phase 1: Users complete a questionnaire; AI analyzes responses for an initial assessment.
- Phase 2: Users play an eye-tracking game; AI evaluates eye movements for additional insights.
- Enhanced Accuracy and Accessibility: AI provides a more accurate, accessible diagnosis available online.

ADDED VALUE

- **Accessibility:** Online availability removes geographic and resource barriers.
- **Efficiency:** Quick results reduce time and effort for diagnosis.
- **Cost-Effective:** Minimizes need for multiple appointments and costly tests.
- **User Empowerment:** Provides actionable insights and next steps.
- **Innovation:** Combines AI analysis with interactive gaming for a unique approach.

Future Plans

- **Milestones Achieved:** Launched web app, completed initial user testing, and collected feedback.
- **Upcoming Features:** Enhance AI algorithms, add new games, and expand the questionnaire.
- **Scaling Plans:** Partner with schools, healthcare providers, and mental health organizations to reach a broader audience.



THANK YOU

Focus Friend revolutionizes ADHD diagnosis with AI-driven, user-friendly tools. Our two-phase testing process ensures accurate, accessible, and efficient results. Join us in transforming ADHD assessment and empowering individuals to better manage their condition.

