

FALCON Hackathon

Project : knowLEDGE

Amrita Vishwa Vidyapeetham



TEAM CODE BLUE

Our Team



Prajwala



Yaswanth



Ojas



Sri Vatsal

Project Overview

Project Name: KnowlEdge

Purpose: To enhance the online learning experience by leveraging AI to provide personalized content summarization, interactive tutoring, and efficient homework assistance, making education more engaging and effective for all users.



Core Features

01

Content
Summarization

03

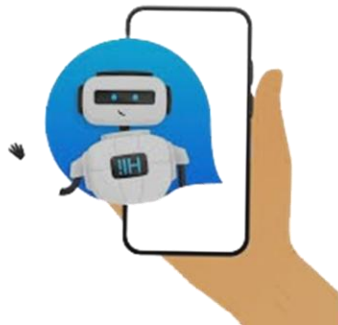
Homework
Assistance

02

Interactive
Tutoring

04

Usage Management



Problem Statement

Enhancing Online Learning Experience

- **Current Limitations:**
 - Traditional e-learning platforms often lack interactive and adaptive learning features.
 - Difficulty in summarizing large volumes of text and testing knowledge in a streamlined manner.
- **Market Size:**
 - The e-learning industry is rapidly growing, with increasing demand for interactive and AI-driven educational tools.
- **Future Potential:**
 - Revolutionize online learning by integrating AI to provide personalized summaries, interactive tutoring, and adaptive homework assistance, enhancing overall learning efficiency and engagement.

Objective & Approach

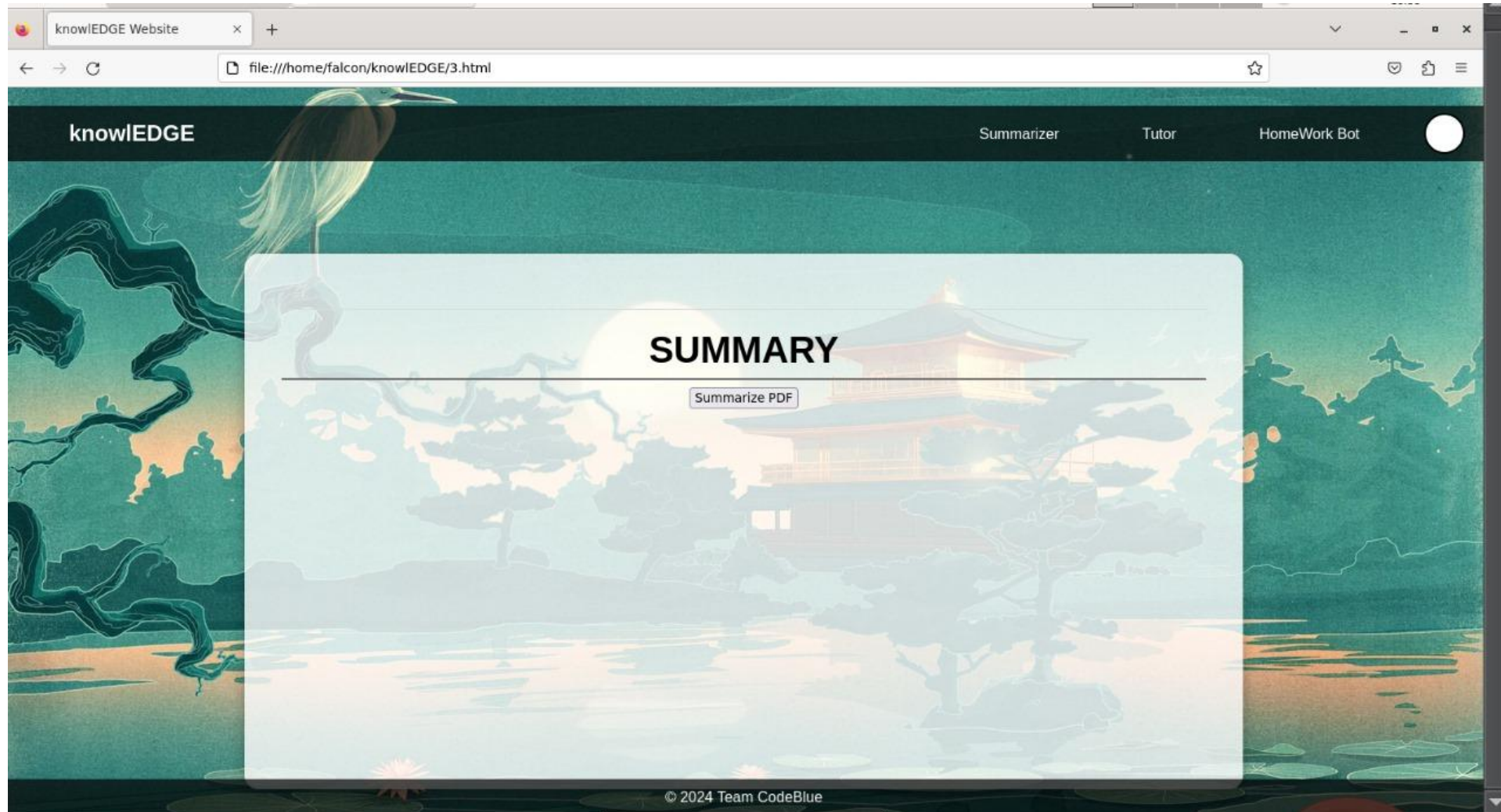
Objective:

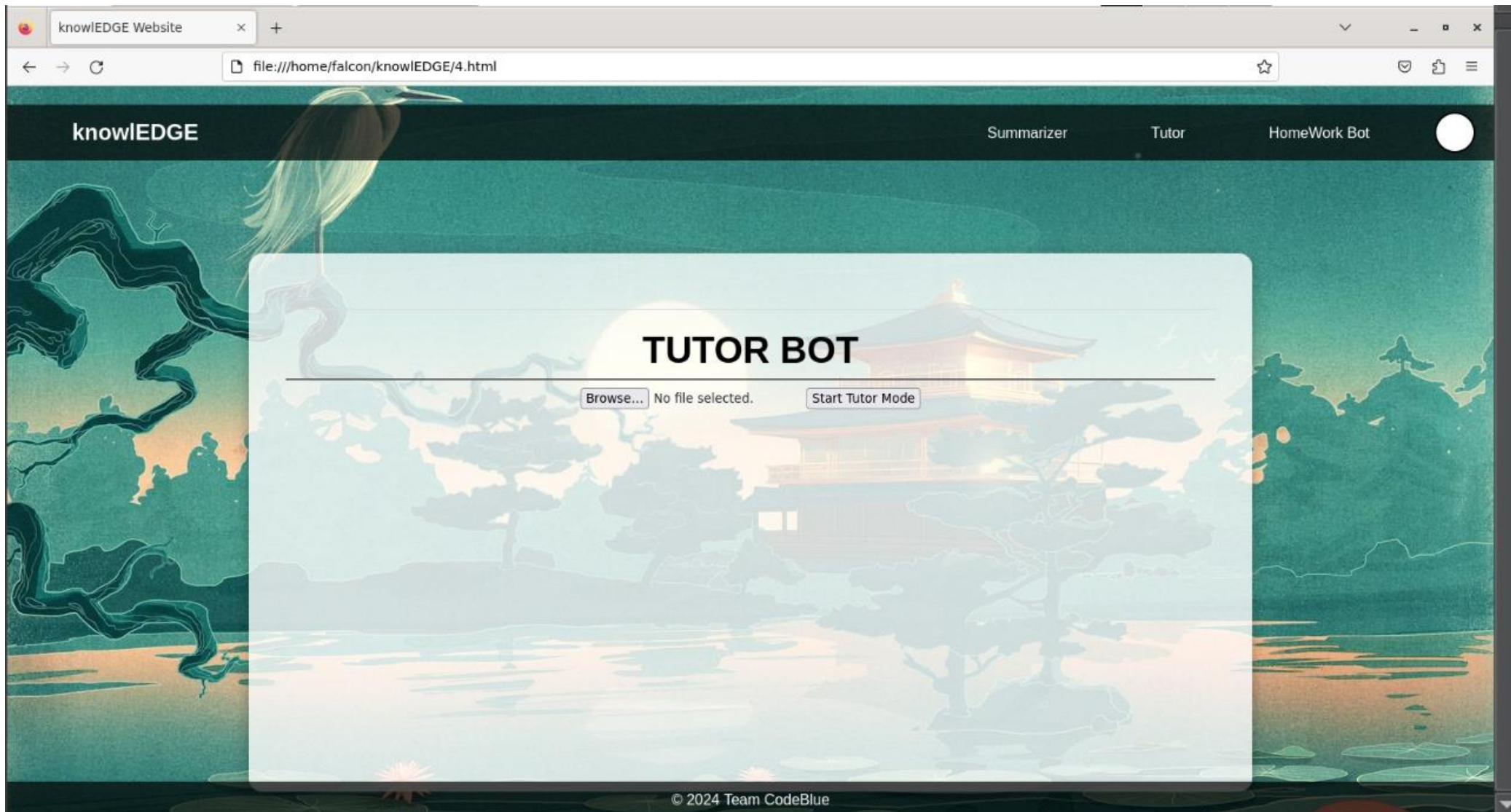
To create an innovative e-learning platform that leverages AI to summarize content, provide interactive tutoring, and assist with homework, thereby enhancing the learning experience for users.

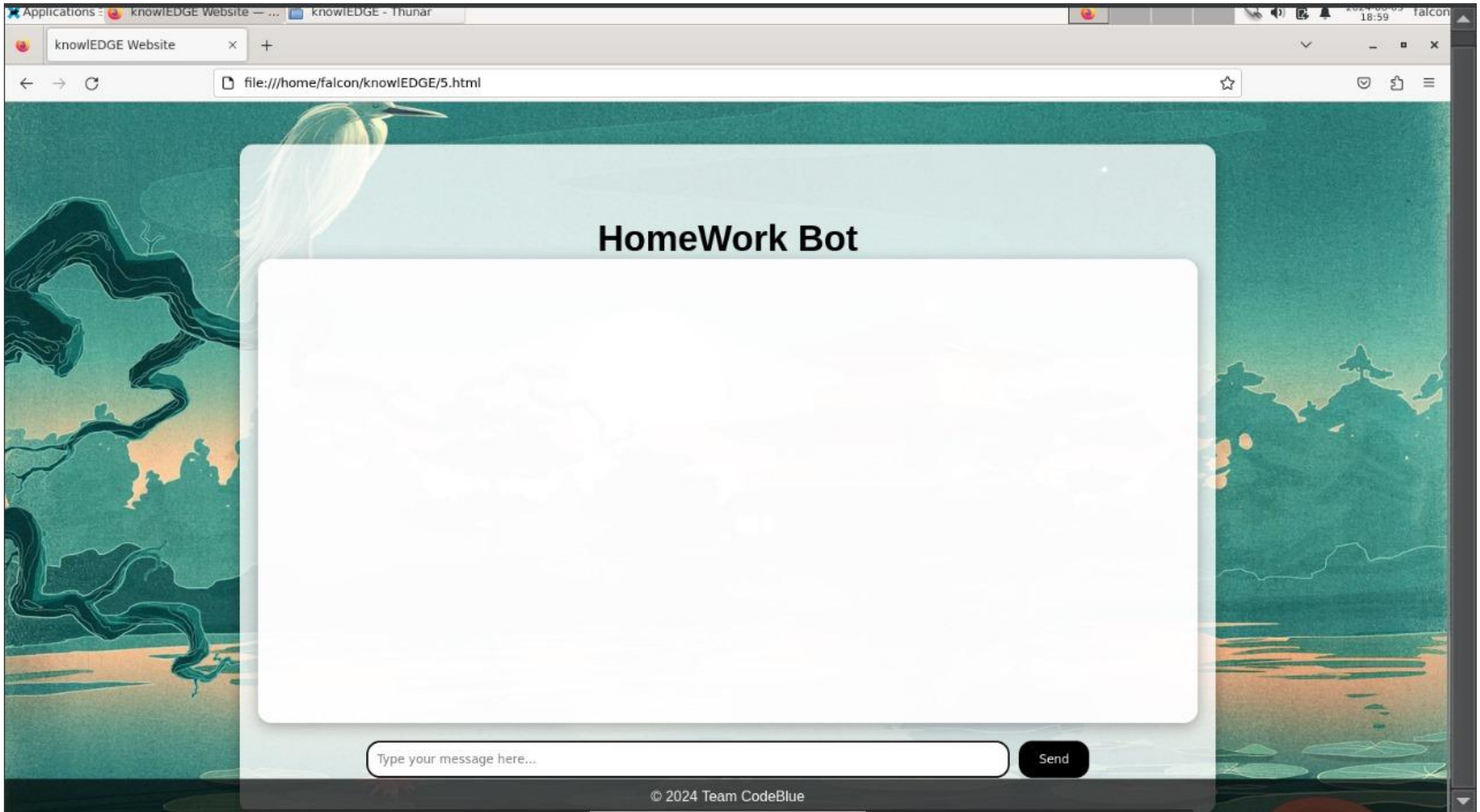
Approach:

- **Development:** Build a user-friendly website for content upload, text input, and interaction with AI-powered tools.
- **AI Integration:** Implement AI models to summarize content, facilitate tutoring, and assist with homework.
- **User Engagement:** Offer daily limits on usage with options for unlimited access through subscription upgrades.

Solution Overview







Technical Implementation

Front End



HTML

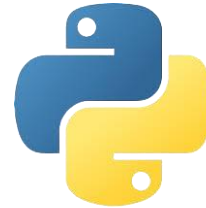


CSS



JAVA SCRIPT

Back End



Python



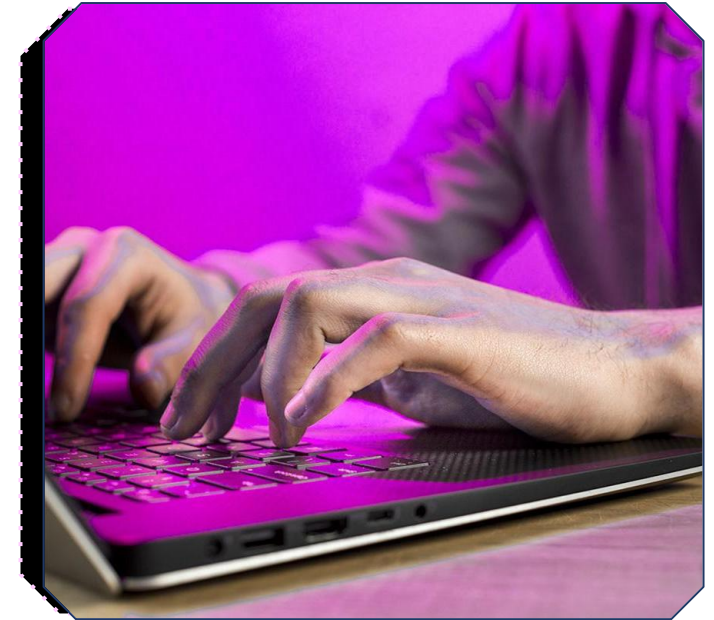
Node JS



Flask

Challenges Faced

- **AI Integration:** Addressed challenges in integrating AI models for summarization, tutoring, and homework assistance.
- **User Experience:** Ensured a seamless and intuitive user interface for content management and interaction with AI tools.
- **Scalability:** Developed solutions to handle varying user loads and content sizes efficiently.



Demonstration

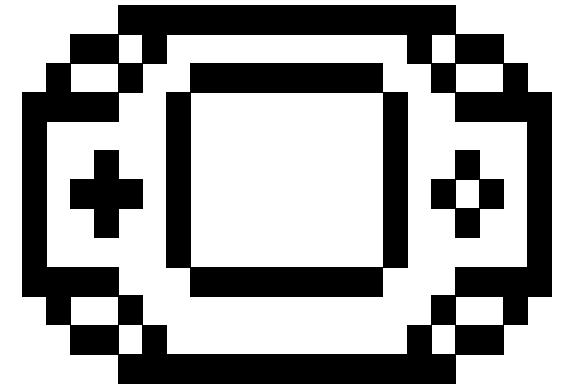
Please click on the below link for Git-Hub repo.

<https://github.com/nameisvatsal/knowlEDGE-t>



Future Enhancements

- **Enhanced AI Capabilities:** Continuously improve AI models for more accurate summaries and personalized tutoring.
- **Adaptive Learning:** Develop adaptive learning features that tailor content and assessments based on user performance.
- **Expanded Content Support:** Integrate support for additional file formats and content types.



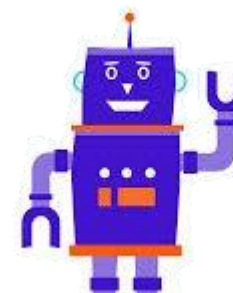
GitHub Repository

Please click on the link for visiting our project GitHub repository.

.....



THANK YOU



TEAM CODE BLUE