



GEN-MAIL

AI-Powered



Targets

01 Problem Statement

02 What is Gen-Mail?

03 Features

Targets

04 Tech Stack

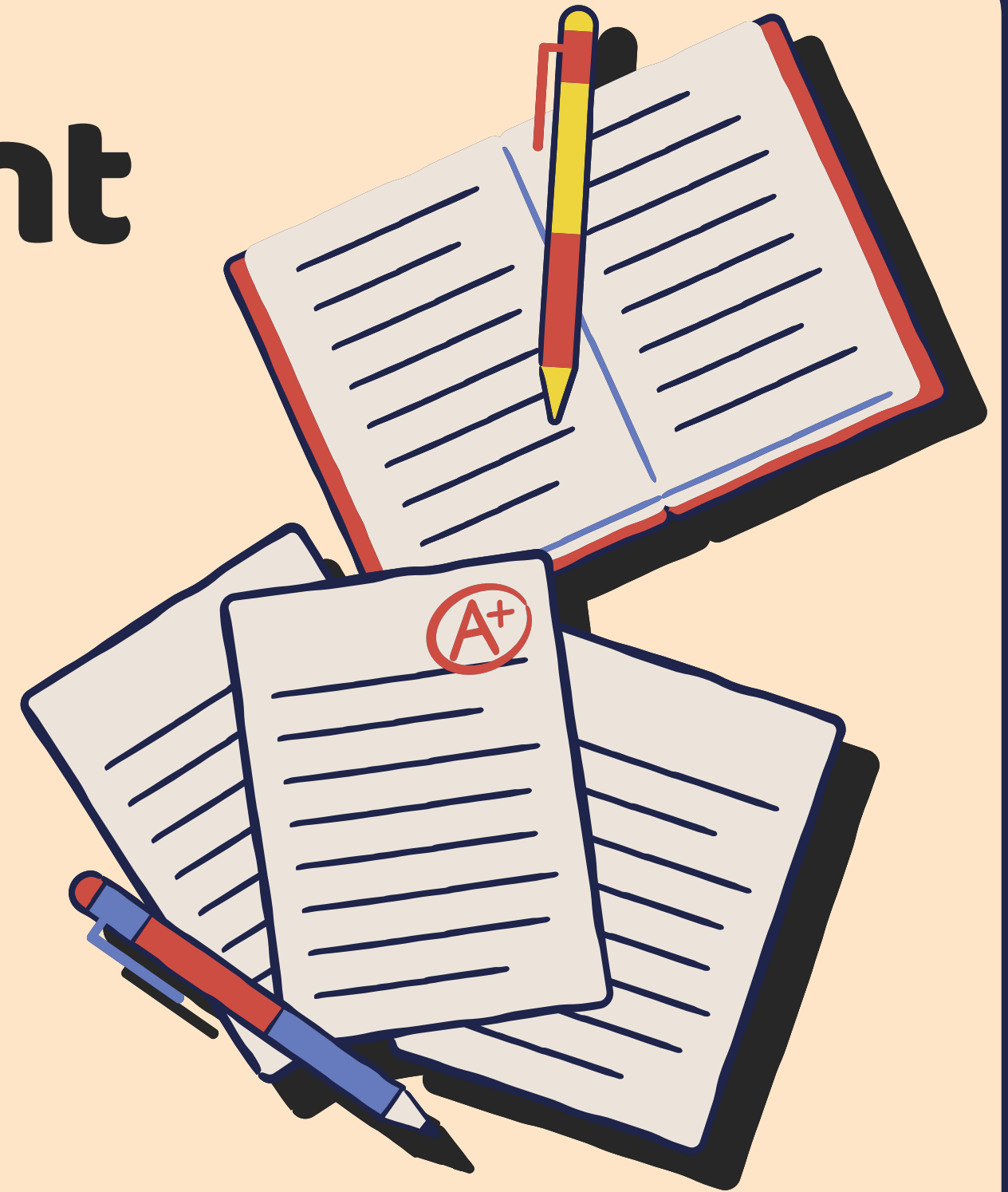
05 Limitations

06 Normal Flow



Problem Statement

- **Time Consumption:** Email writing can be time-consuming.
- **Multiple Tabs/Applications:** Users often switch between tabs or applications to generate, edit, and send emails.
- **Repetition:** The process of regenerating text and copying/pasting between different platforms can be repetitive and inefficient.



What is Gen-Mail?

Efficient Email Creation

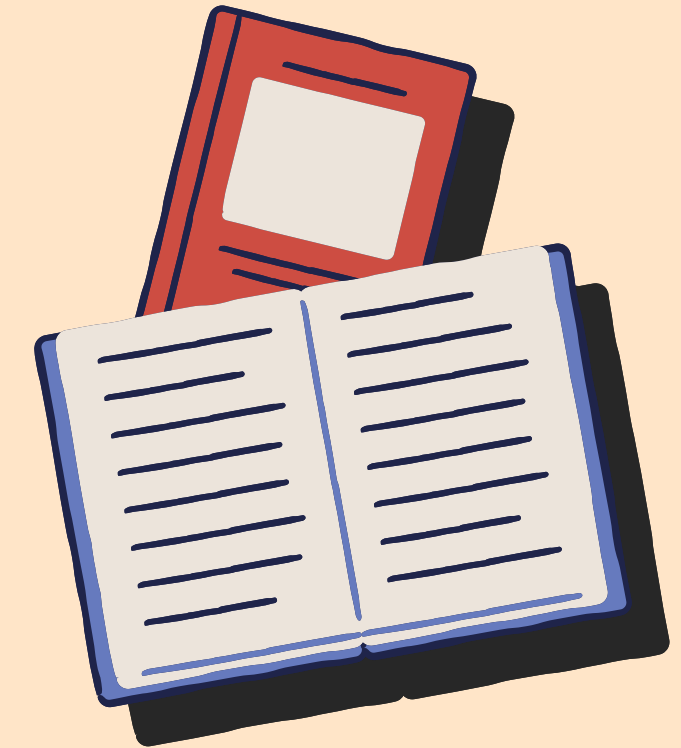
Streamlines the process of generating, editing, and sending emails with LLM-generated text.

All-in-One Workspace

Allows users to manage recipients, edit email content, and send messages within a single platform.

Signature Integration

Includes features for creating and uploading signatures, ensuring consistent and professional communication.



Features

LLM-Generated Text

Automatically generates email content based on user input.

Customizable Email Editing

Provides tools to edit and refine generated text within the platform.

CSV Uploads for Recipients

Facilitates bulk upload of recipient and CC email addresses via CSV files.



Features

Integrated Signature Tools

Allows users to create, upload, and draw digital signatures.

In-App Sending

Enables users to send emails directly from the platform without switching tabs or applications

Workspace Efficiency

Reduces the need for multiple tools and tabs, consolidating the email creation and sending process.



Technologies

Streamlit

Used for building the user interface (UI) of the application, providing an interactive and user-friendly environment for email creation and management.

IBM Granite

Utilized for text generation, leveraging advanced language models to create email content based on user input and preferences.

Streamlit Quill

Integrated as the text editor for customizing and refining the generated email content, offering rich text editing capabilities within the Streamlit UI.

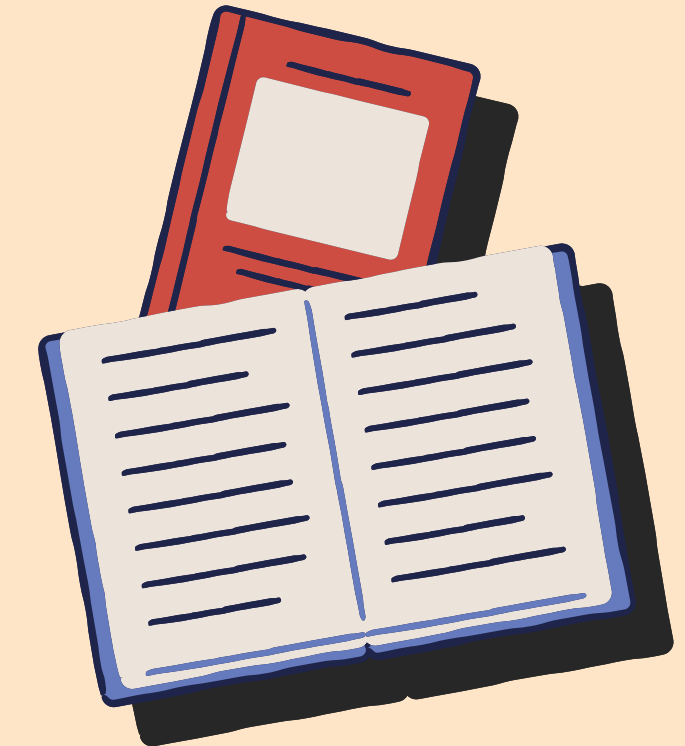
Limitations

Manual Authorization

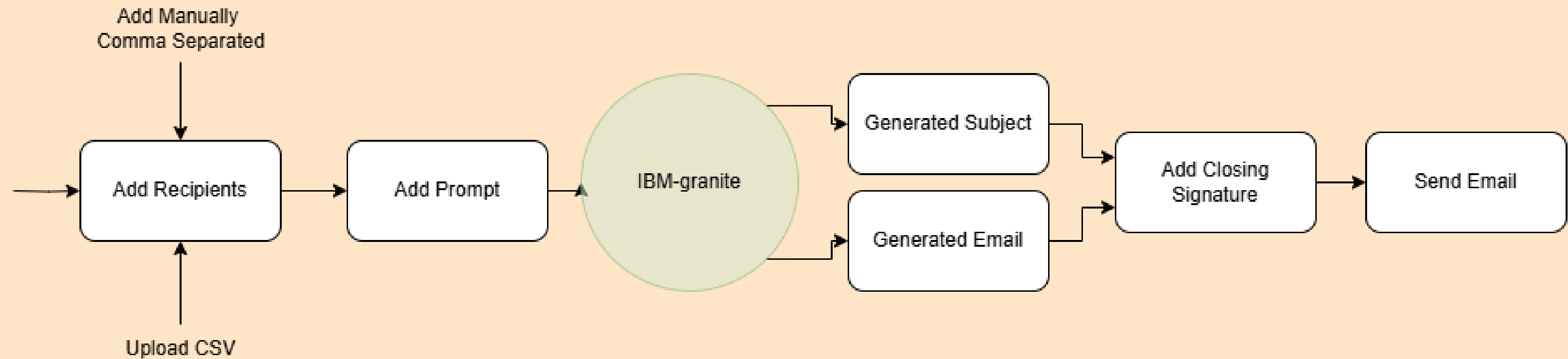
Requires users to manually provide their email and app password, lacking automated authentication or integration with secure authorization methods.

Gmail Only

Currently supports only Gmail, limiting the tool's use for users with other email providers.



Normal Flow





Thank you!