

An aerial photograph of a dense urban skyline, likely New York City, featuring numerous skyscrapers and buildings. The image is overlaid with a gradient that transitions from a teal color on the left to a yellow-orange color on the right. The text "SMARTCITY PULSE" is centered in a bold, yellow, sans-serif font.

SMARTCITY PULSE

Problem

- Inefficient Energy Management Award-winning author
- Increasing Environmental Pollution
- Severe Traffic Congestion
- Slow Emergency Response
- Lack of Real-Time Accurate Data



Solution

1-Smart System

2-Monitoring Areas

3-Performance Improvement

4-Real-time Response

5-Efficiency Boost



Business Value

**Cost
Reduction**

**Increased
Citizen
Satisfaction**

**Enhanced
Efficiency**

Case Study

**Long-term
Benefits**

Why It Matters?

- Immediate Impact:

Provides real-time data interaction for swift decision-making.

- Dynamic Response:

Transforms cities into responsive entities that adapt to changing conditions.

- Innovative Approach:

Offers a unique solution that enhances urban management and quality of life.

Technology Applications

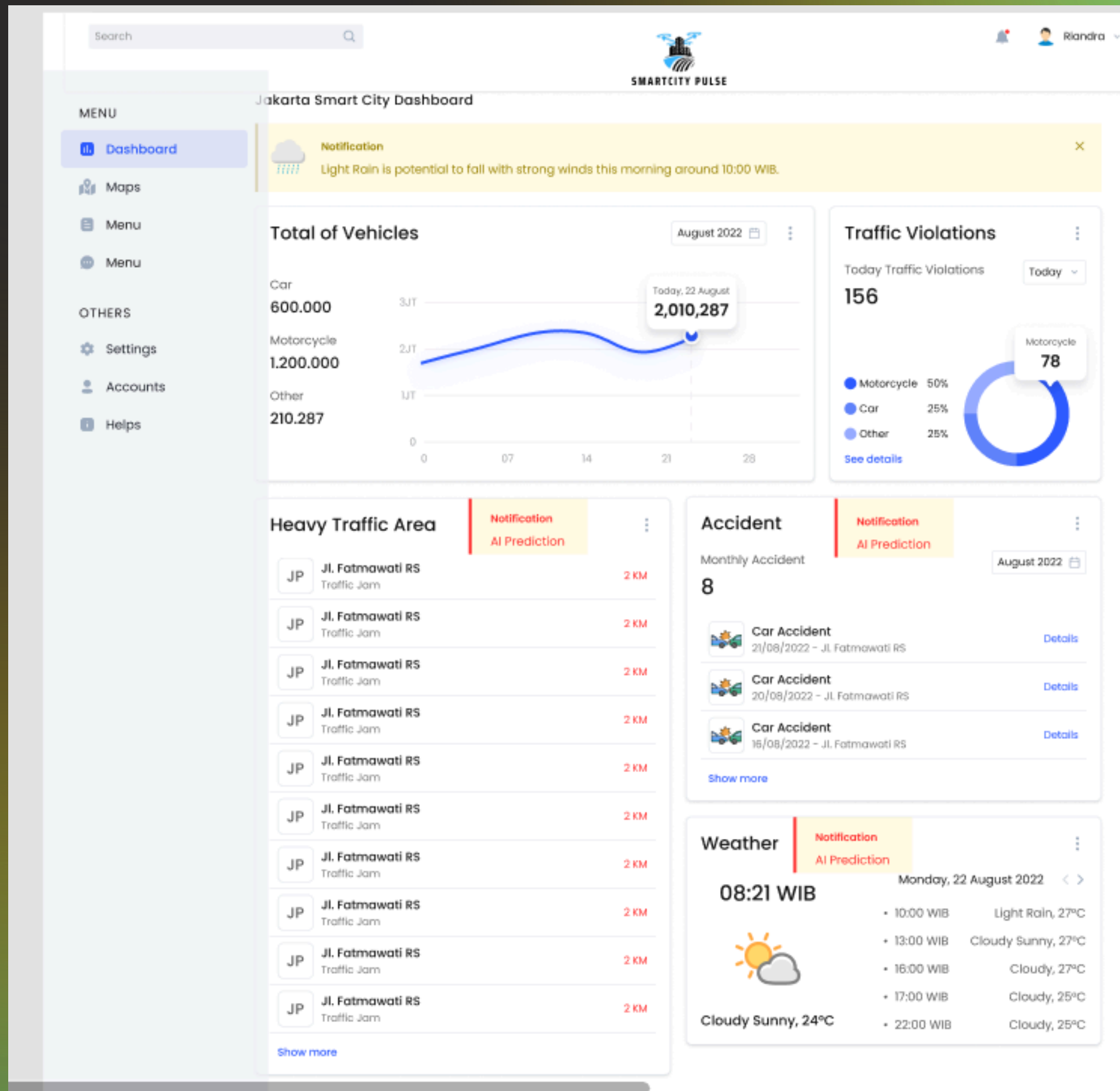
A background image showing a person's hands interacting with a laptop. One hand is holding a black stylus over the keyboard, while the other hand is resting on the keyboard. In the bottom left corner, there is a glass of water. The image has a teal and yellow color gradient overlay.

- **AI Technology:**
 - Utilizes IBM WatsonX AI for data analysis, pattern recognition, and predictions.
- **Data Tools:**
 - Employs tools like Figma for design and GitHub for code management.
- **Integration:**
 - Integrates various technologies to enhance city performance and management.

Demo

Demo link

Demo



MENU

[Dashboard](#)[Maps](#)[Menu](#)[Menu](#)

OTHERS

[Settings](#)[Accounts](#)[Helps](#)

Jakarta Smart City Dashboard



Notification

Light Rain is potential to fall with strong winds this morning around 10:00 WIB.



Total of Vehicles

August 2022

Car

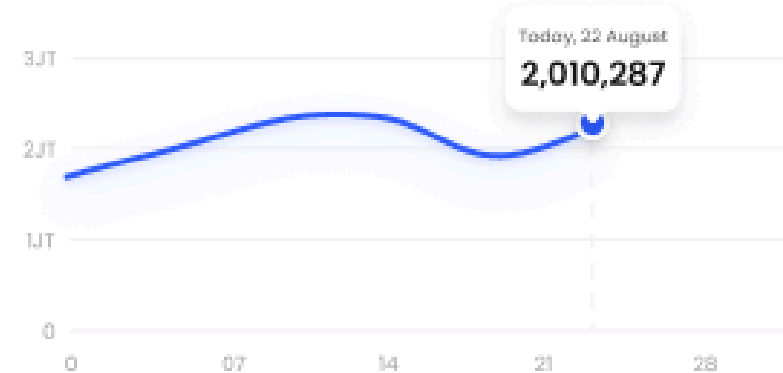
600.000

Motorcycle

1.200.000

Other

210.287



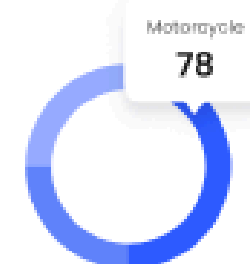
Traffic Violations

Today Traffic Violations

Today

156

- Motorcycle 50%
- Car 25%
- Other 25%

[See details](#)

Heavy Traffic Area

Notification

AI Prediction

JP

Jl. Fatmawati RS
Traffic Jam

2 KM

JP

Jl. Fatmawati RS
Traffic Jam

2 KM

JP

Jl. Fatmawati RS
Traffic Jam

2 KM

JP

Jl. Fatmawati RS
Traffic Jam

2 KM

JP

Jl. Fatmawati RS
Traffic Jam

2 KM

JP

Jl. Fatmawati RS
Traffic Jam

2 KM

JP

Jl. Fatmawati RS
Traffic Jam

2 KM

JP

Jl. Fatmawati RS
Traffic Jam

2 KM

JP

Jl. Fatmawati RS
Traffic Jam

2 KM

JP

Jl. Fatmawati RS
Traffic Jam

2 KM

[Show more](#)

Accident

Notification

AI Prediction

Increased accident likelihood due to weather conditions detected by AI. Reduce speed limits and activate road safety protocols.

Monthly Accident

8



Car Accident

21/08/2022 - Jl. Fatmawati RS

[Details](#)

Car Accident

20/08/2022 - Jl. Fatmawati RS

[Details](#)

Car Accident

18/08/2022 - Jl. Fatmawati RS

[Details](#)[Show more](#)

Weather

Notification

AI Prediction

08:21 WIB

Monday, 22 August 2022



Cloudy Sunny, 24°C

- 10:00 WIB Light Rain, 27°C
- 13:00 WIB Cloudy Sunny, 27°C
- 16:00 WIB Cloudy, 27°C
- 17:00 WIB Cloudy, 25°C
- 22:00 WIB Cloudy, 25°C

THANK YOU

shahd almatrouk

full stack dev