

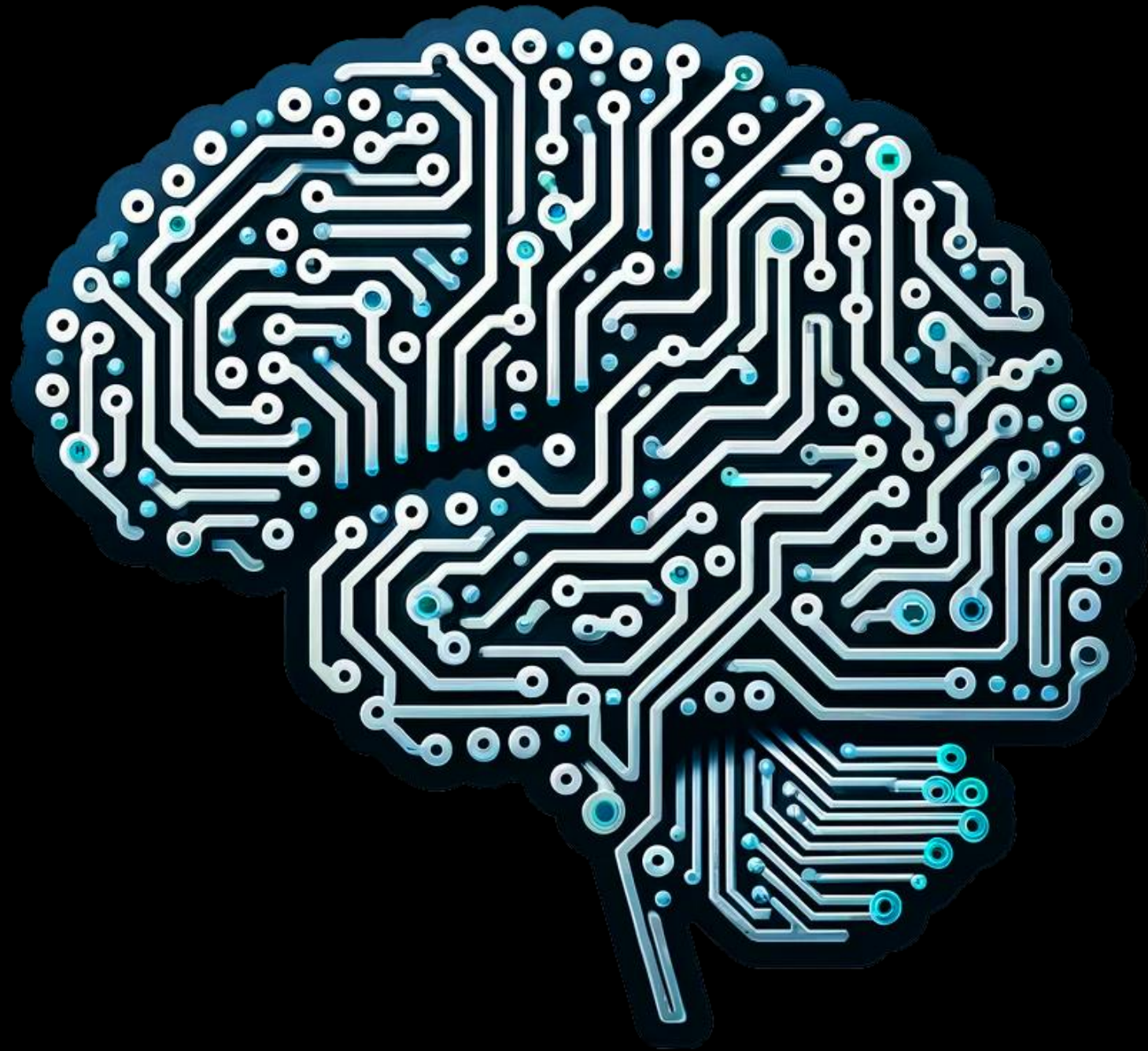
Soulquest

Interactive Learning Platform Powered by ChatGPT

Resumen

- "Soulquest: Interactive Learning Platform Powered by ChatGPT" is an innovative educational tool designed to enhance student learning by integrating artificial intelligence and game mechanics. The platform uses ChatGPT to provide personalized educational content, offering real-time feedback and maintaining student engagement with interactive elements. In response to the challenges faced by traditional educational models, especially during the COVID-19 pandemic, Soulquest aims to create a dynamic and adaptable learning environment that meets the individual needs of each student.

- A key component of Soulquest is ChatGPT, a model developed by OpenAI that enables natural, adaptive conversational interactions. ChatGPT plays a crucial role in adjusting the educational content based on students' responses and progress, ensuring that each user receives the necessary support in a timely manner.



Artificial Intelligence (AI)

- Artificial intelligence (AI) is defined as the ability of machines to emulate human cognitive functions such as learning, problem-solving, and decision-making. This technology enables systems to adapt and improve performance based on experience and data. In the educational context, AI has proven to be a revolutionary tool, allowing deep personalization of the learning process.



Objetivo General



SoulQuest seeks to revolutionize education by providing a personalized, adaptable, and motivating learning experience powered by cutting-edge artificial intelligence. Through natural interactions and dynamic content, SoulQuest empowers individuals to explore a wide range of disciplines, develop critical 21st-century skills, and build a global collaborative learning community.



By removing traditional learning barriers, SoulQuest aims to democratize access to knowledge and foster personal and professional growth throughout life.

Specific Objectives



- Immediate feedback is another crucial aspect of personalization in Soulquest. The platform offers instant feedback on student performance, allowing for the quick correction of errors and continuous reinforcement of concepts. This focus on real-time feedback not only facilitates more efficient learning but also helps students consolidate their understanding of the material and improve their academic performance.

Educational Benefits of Soulquest

- Soulquest offers a range of significant educational benefits. The combination of interactivity and gamification increases students' interest and motivation, resulting in greater participation in the learning process. The personalization of content and immediate feedback contributes to a considerable improvement in academic performance, enabling more effective learning tailored to each student's individual needs.
- Furthermore, the platform is designed to be accessible to a wide range of students, regardless of their skill level or educational background. This inclusive approach ensures that all students can benefit from an innovative and enriching educational experience. Altogether, Soulquest represents a comprehensive solution to transforming learning by combining the power of artificial intelligence with the appeal of game mechanics, providing an educational platform that is both effective and engaging.