



# PHISHSECURE AI

Advanced Phishing Detection and Prevention

[HTTPS://GITHUB.COM/SAMIYA-AW/PHISHSECURE-AI](https://github.com/Samiya-Aw/PhishSecure-AI)



# ABOUT PHISHSECURE AI

AI solutions for defending against digital threats and enhancing online safety.





## SHORT DESCRIPTION

PhishSecure AI is an AI-powered web application that detects phishing emails by analyzing email content and URLs, providing users with detailed analysis and recommended actions to enhance their email security.



# LONG DESCRIPTION

Phishing attacks have become increasingly sophisticated, exploiting human vulnerabilities to steal sensitive information, financial assets, and disrupt organizational operations. Traditional security measures often fall short in detecting these nuanced threats, leading to substantial financial and reputational damages.

PhishSecure AI is an innovative solution designed to combat the ever-growing threat of phishing attacks, which continue to pose significant risks to individuals and organizations worldwide. By harnessing the power of advanced machine learning techniques, PhishSecure AI accurately detects and mitigates phishing attempts in real-time, ensuring a secure online environment for users.

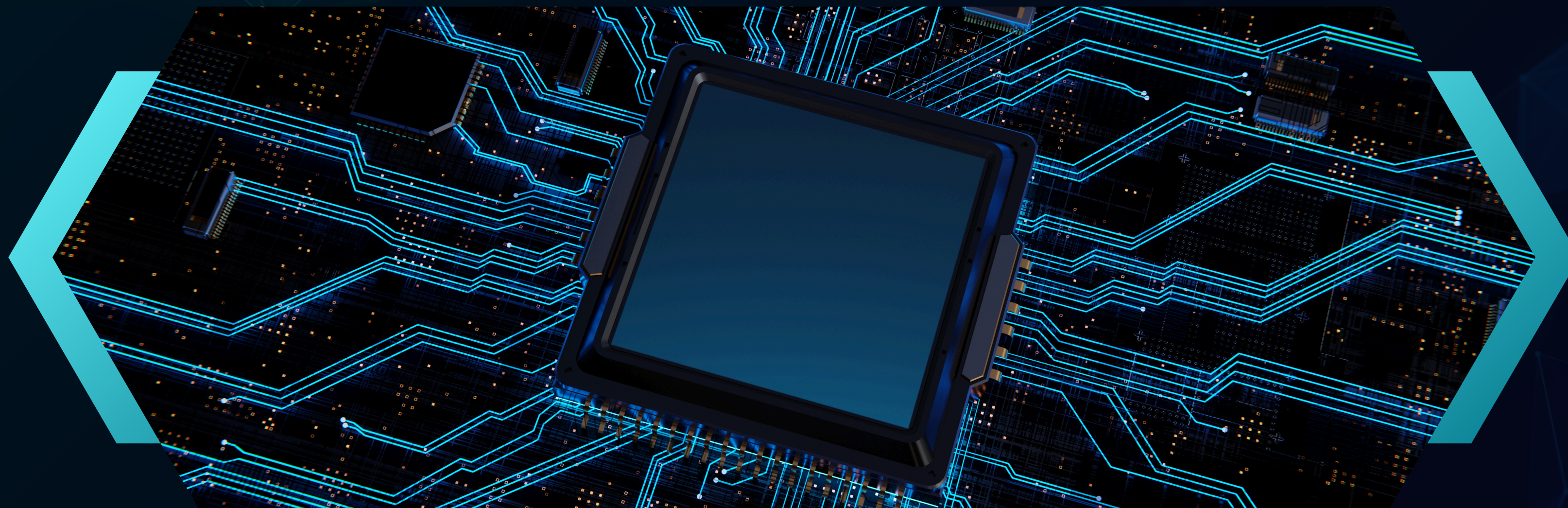




# PROBLEM STATEMENT

Phishing attacks have surged in both frequency and sophistication, exploiting human vulnerabilities to steal sensitive information, financial assets, and disrupt organizational operations. These attacks often bypass traditional security measures, leading to significant financial losses, compromised personal data, and damaged reputations.

The increasing complexity of phishing schemes demands a more intelligent and adaptive approach to detection and prevention, highlighting the need for advanced solutions that can effectively safeguard users in real-time.



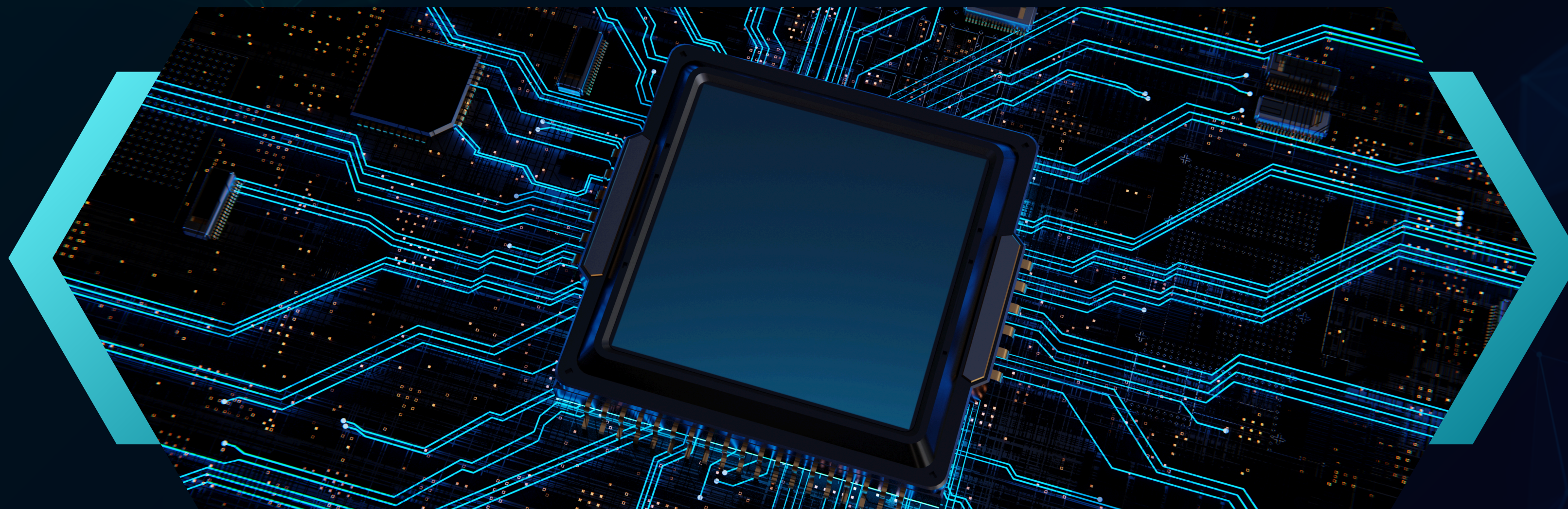




# SOLUTION

PhishSecure AI offers an advanced, AI-driven phishing detection and prevention system that leverages machine learning algorithms to identify and block phishing attempts in real-time. By analyzing patterns in emails, websites, and messages, it distinguishes between legitimate and malicious content with high accuracy and provides immediate alerts to users upon detecting potential threats, enabling them to take swift action to protect their data.

Additionally, the integrated dashboard offers comprehensive analytics, allowing organizations to monitor phishing trends and assess the effectiveness of their security measures. PhishSecure AI's continuous learning capability ensures that it adapts to emerging phishing tactics, maintaining robust protection against evolving cyber threats.







# OBJECTIVES

- Develop a robust AI-driven system to detect phishing attempts with high accuracy.
- Provide real-time protection to users against evolving phishing scams.
- Enhance overall online security through intelligent threat analysis and mitigation.







# FEATURES

## Real-Time Detection

Monitors emails, websites, and messages to identify phishing attempts instantly.

## User Alerts

Notifies users of potential threats, allowing immediate action to safeguard data.

## Dashboard Analytics

Offers comprehensive insights into phishing trends and protection effectiveness.

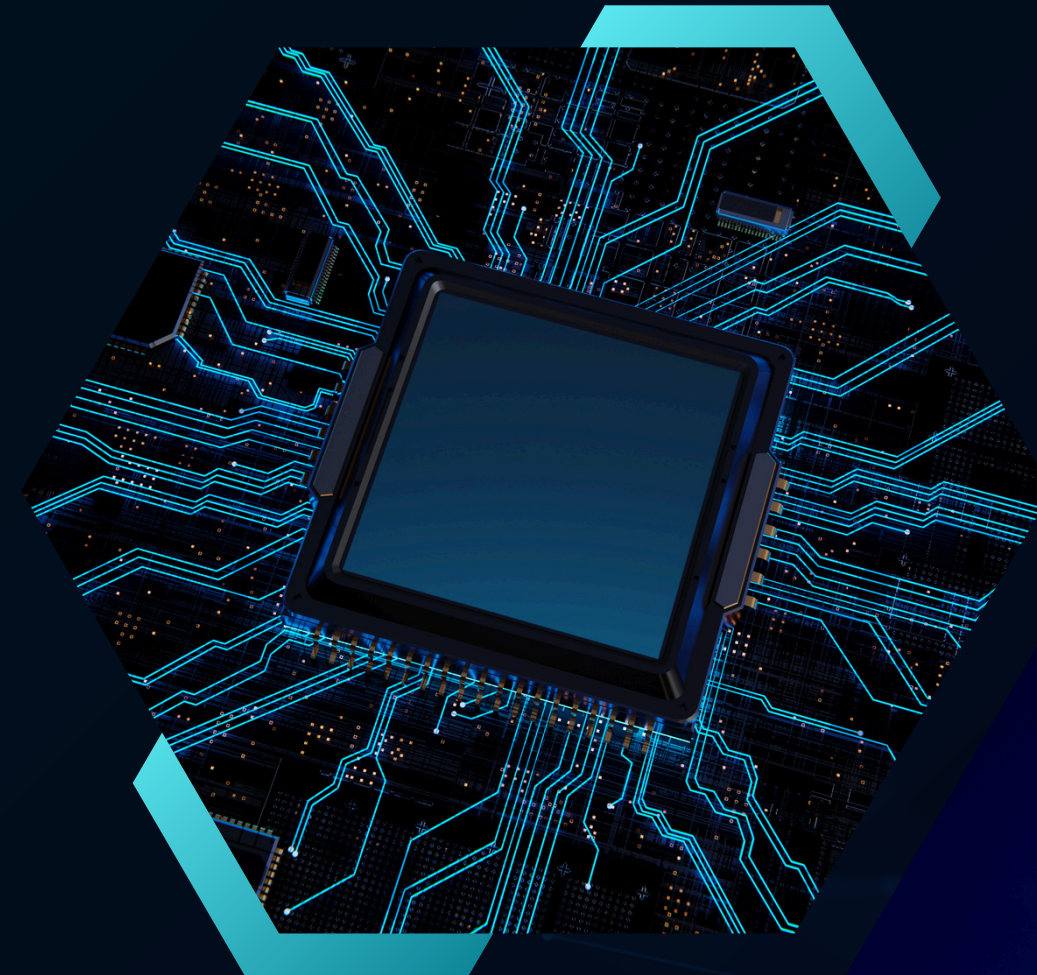






# TECHNOLOGY STACK

- Backend: Python, Flask, VirusTotal, Gmail IMAP Library
- Frontend: HTML5, CSS3, JavaScript
- AI/ML Components: OpenAI o1 preview, o1 mini
- Deployment: Vercel
- Version Control: Git, GitHub



# MEET OUR TEAM



**Saira Abdul Wahid**  
Team Leader  
Frontend Developer



**Samiya Abdul Wahid**  
Frontend Developer



**Rajesh Yarra**  
Backend Developer



**Haseeb Asif**  
Backend Developer



**Fais Putama**  
Designer





# THANK YOU

[HTTPS://GITHUB.COM/SAMIYA-AW/PHISHSECURE-AI](https://github.com/SamiYA-AW/PHISHSECURE-AI)