


# MedAltFinder: A Versatile Mobile Application for Identifying Medication Alternatives Using Llama 3.2

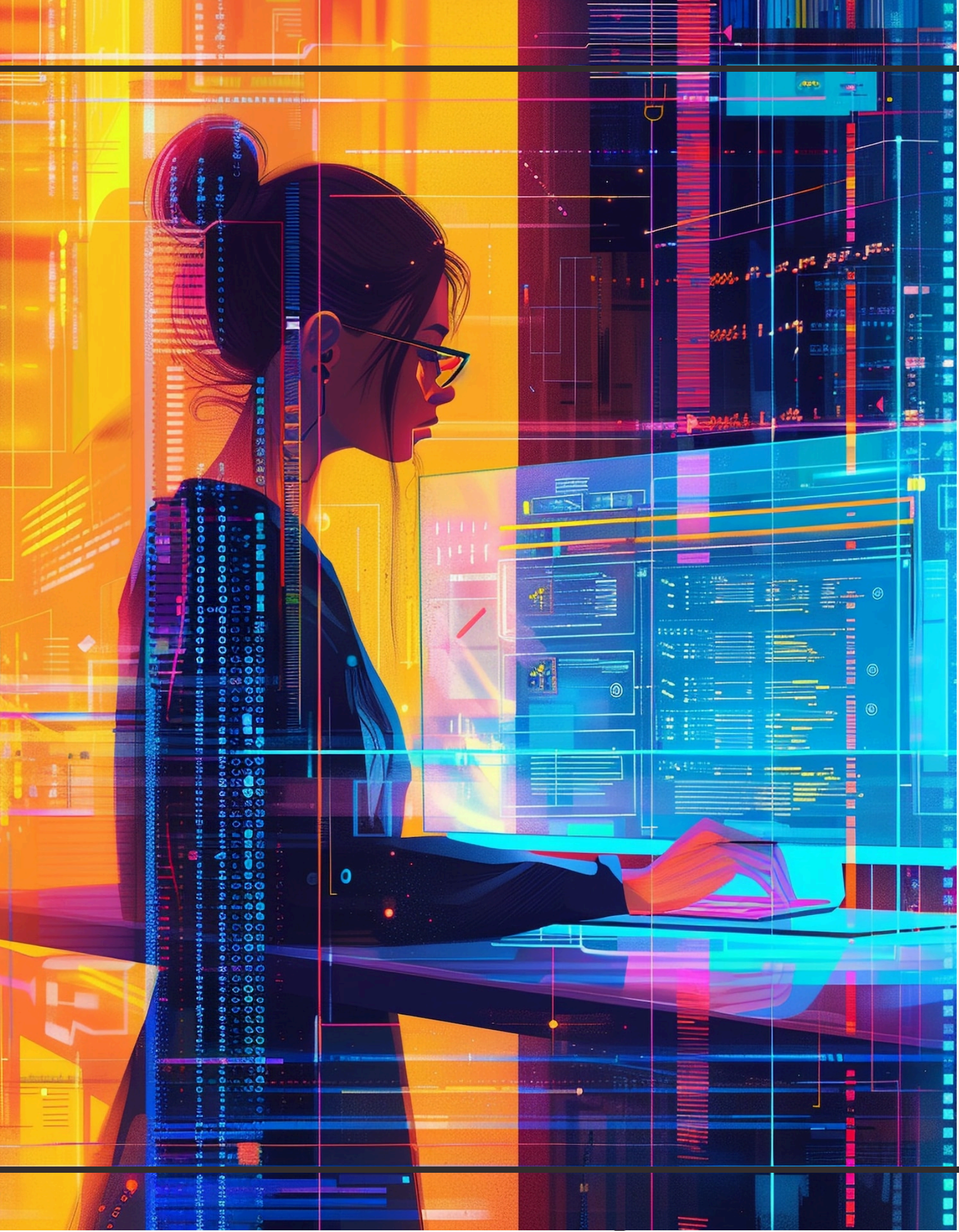


# Introduction to MedAltFinder

In today's fast-paced world, **MedAltFinder** is paramount. This presentation discusses a **versatile mobile application** designed to identify medication alternatives using **Llama 3.2** technology. Our goal is to enhance patient care and **empower users** with informed choices.







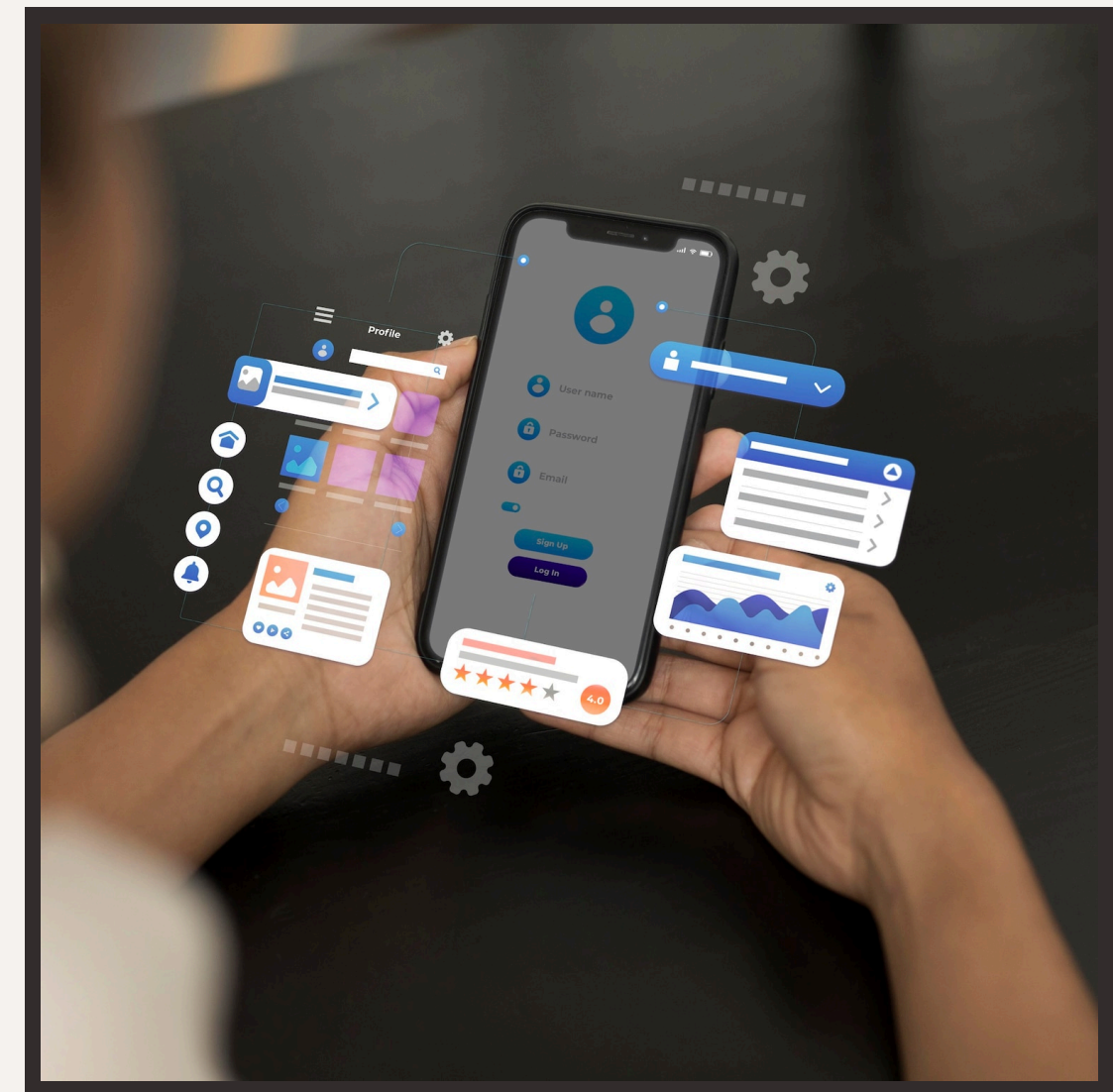
# Understanding Llama 3.2

Llama 3.2 is a cutting-edge **AI model** that facilitates the identification of medication alternatives. By leveraging **natural language processing**, it analyzes and provides **accurate recommendations**, ensuring that patients receive the best possible care tailored to their needs.



# Key Features of the Application

The application boasts several key features: **real-time** medication **alternatives**, and **personalized recommendations**. These features aim to streamline and promote adherence to treatment plans.



# Benefits for Patients

Patients benefit significantly from this application. By providing **alternative medication options**, it empowers users to make informed decisions about their healthcare. Furthermore, it enhances **accessibility** and ensures that users are aware of potential side effects and interactions.







## Future of MedAltFinder

As technology evolves, the future of MedAltFinder will increasingly rely on **mobile applications** like this one. By harnessing the power of AI, we want this app to connect with pharmacy's pharmaceutical data, and take advantage of AI technologies to tell the patient using **automated** email or device notification if alternative medicine is available in nearby pharmacies. we can improve patient outcomes, reduce costs, and foster a more **efficient healthcare system** that prioritizes patient needs.



# Conclusion and Next Steps

In conclusion, the versatile mobile application using Llama 3.2 represents a significant advancement in **MedAltFinder**. Moving forward, we aim to enhance its features and expand its reach, ultimately transforming how patients manage their **medication** and healthcare decisions.







# QuantumAI