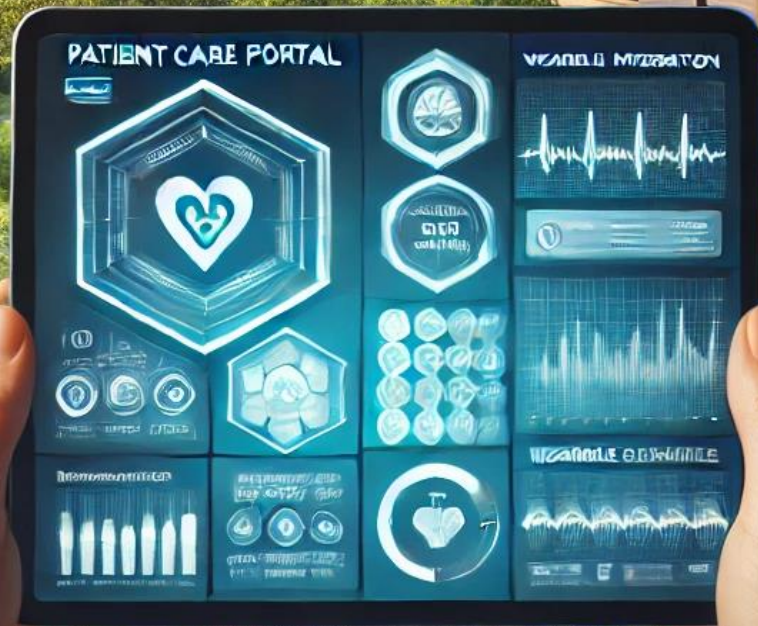


Lokahi Precision Care Portal



Lokahi Precision Care Portal

The Lokahi Precision Care Portal unifies patient care, monitoring, and billing, by leveraging synthetic data, wearables, and agentic technology to deliver personalized insights and remote care, easing Hawaii's strained medical system..

Lokahi Business Case

1. Using synthetic modeling, develop a seamless and transparent medical insurance program that is fully integrated.
2. Focus specifically on the breast cancer use case.
3. Propose a wearable solution to address chemo brain.
4. Demonstrate a solution for patient interaction using an agentic Clinical Decision Support System (CDSS) for remote patient care.

Project Flow (Use Case Breast Cancer)

1 Lokahi Dataset

Lokahi_Innovation_in_Healthcare_Hackathon

2 Data Exploration

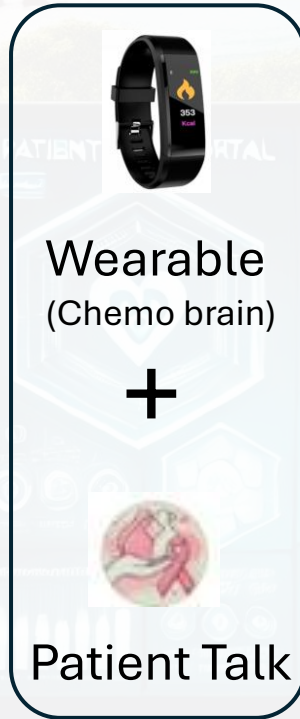


Claims_Services
Claims_Provider
Claims_Member
Claims_Enrollment

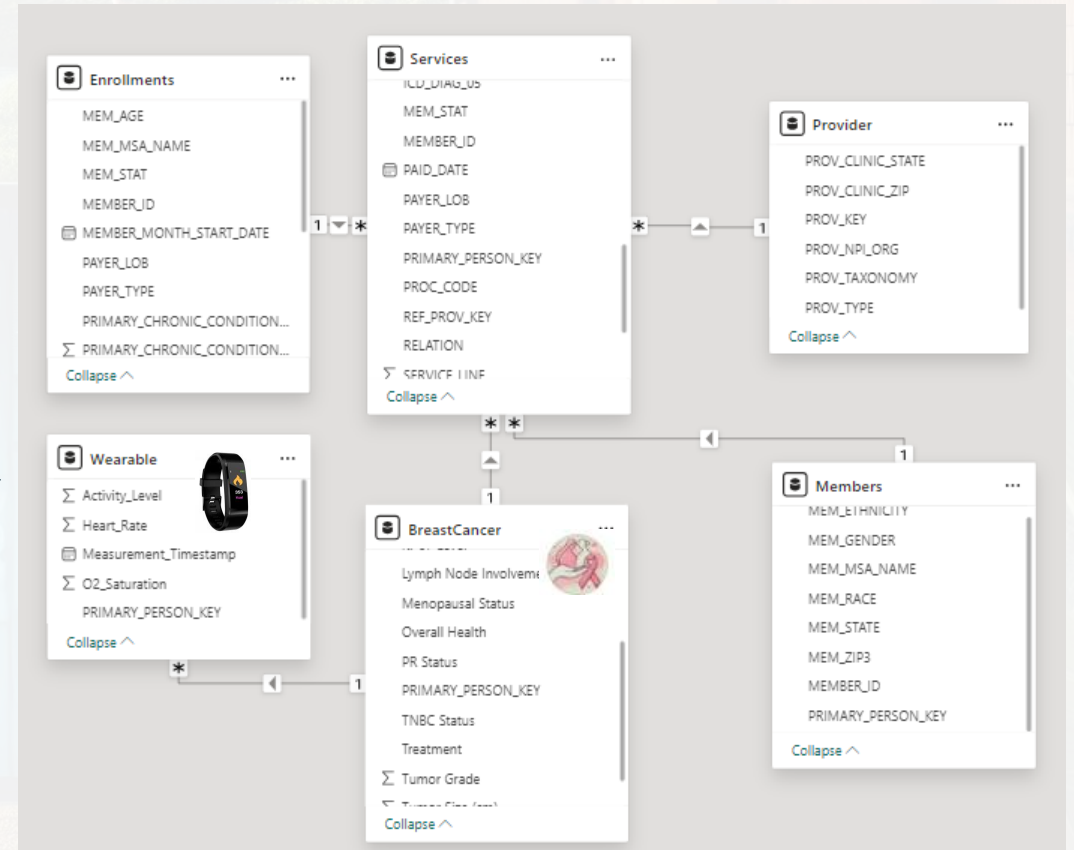


Synthetic
Data

3 Breast Cancer (Use Case)



6 Seamless/Transparent Star Schema



5 Implement Solutions

The Lokahi Application

app

Lokahi Data

Wearable Data

Breast Cancer Data

Treatment Model

Patient Talk

Lokahi Business Case

1. Develop a seamless, transparent medical insurance program that integrates fully (from soup to nuts), rather than serving as an add-on.
2. Focus specifically on the breast cancer use case.
3. Propose a wearable solution to address chemo brain.
4. Demonstrate a synthetic solution for patient interaction using an agentic Clinical Decision Support System (CDSS) for remote patient care.

app

Lokahi Data

Wearable Data

Breast Cancer Data

Treatment Model

Patient Talk

Lokahi Synthetic Medical Data Generator

Number of Breast Cancer Patients to Generate



Measurements per Patient (Wearable Data)



Number of Services to Generate



Number of Providers to Generate





app

Lokahi Data

Wearable Data

Breast Cancer Data

Treatment Model

Patient Talk

Wearable Data Generator

Number of Patients

40

–

+

Measurements per Patient

10

–

+

Start Date


2024/12/01

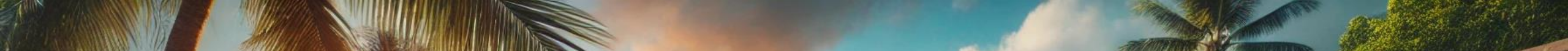
Start Time

08:00

▼

This tool generates mock wearable data for patients, some of whom have cancer and may exhibit signs of chemo brain.





- app
- Lokahi Data
- Wearable Data
- Breast Cancer Data**
- Treatment Model
- Patient Talk

Synthetic Data Generator: Clean and Fuzzy (Noisy)

This app generates synthetic breast cancer patient data and provides downloads for both clean and fuzzy datasets.

Number of Patients to Generate

100

-

+

Generate Data

Perfect Data

	Patient ID	Age	Menopausal Status	Tumor Size (cm)	Lymph Node Involvement	Tumor Grade	Tu
0	1	64	Post-menopausal	1.88	Negative	2	I
1	2	55	Post-menopausal	2.64	Positive	2	III




- app
- Lokahi Data
- Wearable Data
- Breast Cancer Data
- Treatment Model
- Patient Talk

Patient Treatment Prediction App

Upload patient data to train a model and predict treatments based on input data.

Upload a CSV file for training

 Drag and drop file here
Limit 200MB per file • CSV

Browse files

Using default training data.

Training Dataset Preview:


	Patient ID	Age	Menopausal Status	Tumor Size (cm)	Lymph Node Involvement	Tumor Grade	Tur
0	1	64	Post-menopausal	1.88	Negative	2	I
1	2	55	Post-menopausal	2.64	Positive	2	III
2	3	74	Post-menopausal	1.8	Positive	2	III
3	4	53	Post-menopausal	1.74	Negative	2	I

- app
- Lokahi Data
- Wearable Data
- Breast Cancer Data
- Treatment Model
- Patient Talk

Patient Treatment Prediction App

Upload patient data to train a model and predict treatments based on input data.

Upload a CSV file for training

 Drag and drop file here
Limit 200MB per file • CSV

Browse files

Using default training data.

Training Dataset Preview:

	Patient ID	Age	Menopausal Status	Tumor Size (cm)	Lymph Node Involvement	Tumor Grade	Tumor Type
0	1	64	Post-menopausal	1.88	Negative	2	I
1	2	55	Post-menopausal	2.64	Positive	2	III
2	3	74	Post-menopausal	1.8	Positive	2	III
3	4	53	Post-menopausal	1.74	Negative	2	I

app

Lokahi Data

Wearable Data

Breast Cancer Data

Treatment Model

Patient Talk



Patient Talk

By Michael L Lively &

Breast Cancer Swarm Analysis. For Patient ID, input a number 1 to 1000.

Start

Team

Patient Talk

[Click here to visit the app](#)

Lokahi Conclusion

The Lokahi Precision Care Portal redefines healthcare by offering a seamless, integrated solution that unifies patient care, monitoring, and billing. Designed to alleviate the strain on Hawaii's overburdened medical system, the portal focuses on breast cancer patients, leveraging synthetic data, wearables, and agentic technology to deliver personalized, real-time insights and remote care management.

Lokahi Thanks to the Team



Ahmad Talha Ansari

ahmad_talha_ansari317



Bilal Raza

billy_prg
Software Eng



Amanullah Shahzad

Amanullah_Shahzad



Reema Memon

reemamemon
Student



Anjalee Ramwani

Anjalee

