



lab  
lab  
ai

# Lōkahi Innovation in Healthcare 2024

HACKATHON

INTRODUCING

ASLAN AI

Your mental health assistant!



# Problem

**Relapse in mental health and addiction recovery is a critical issue. Many individuals relapse because they lack immediate, accessible tools to process their emotions, identify their needs, and act in alignment with their values during moments of crisis.**



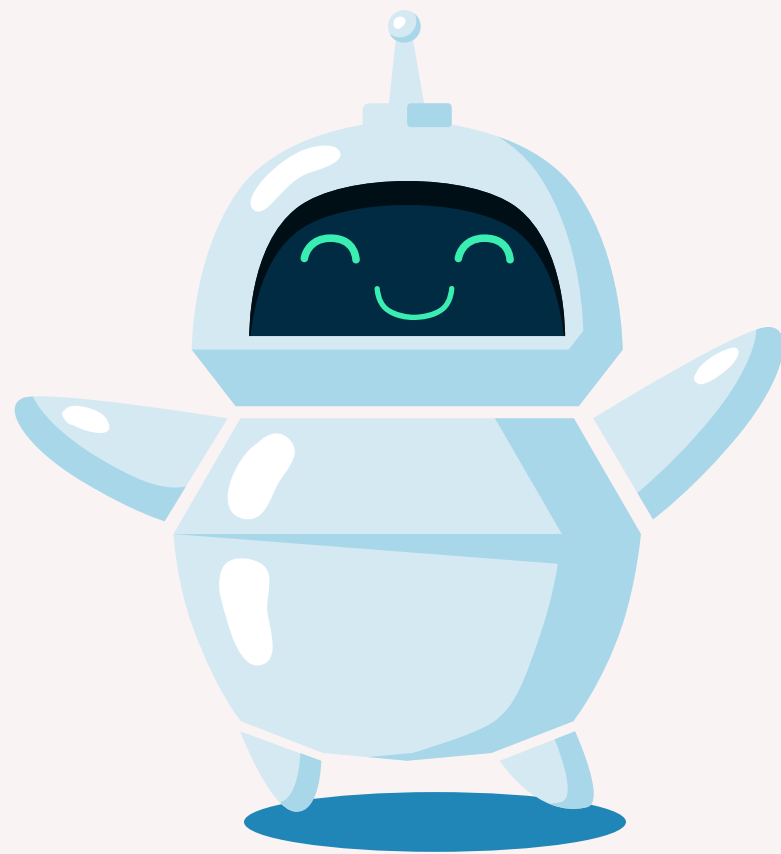


# Solution

**Aslan AI, that provides immediate, personalized emotional support during moments of crisis, offering real-time validation, coping strategies, and assistance from psychiatrist. By being accessible anytime, it helps users process emotions and make decisions that align with their recovery goals, reducing the risk of relapse.**

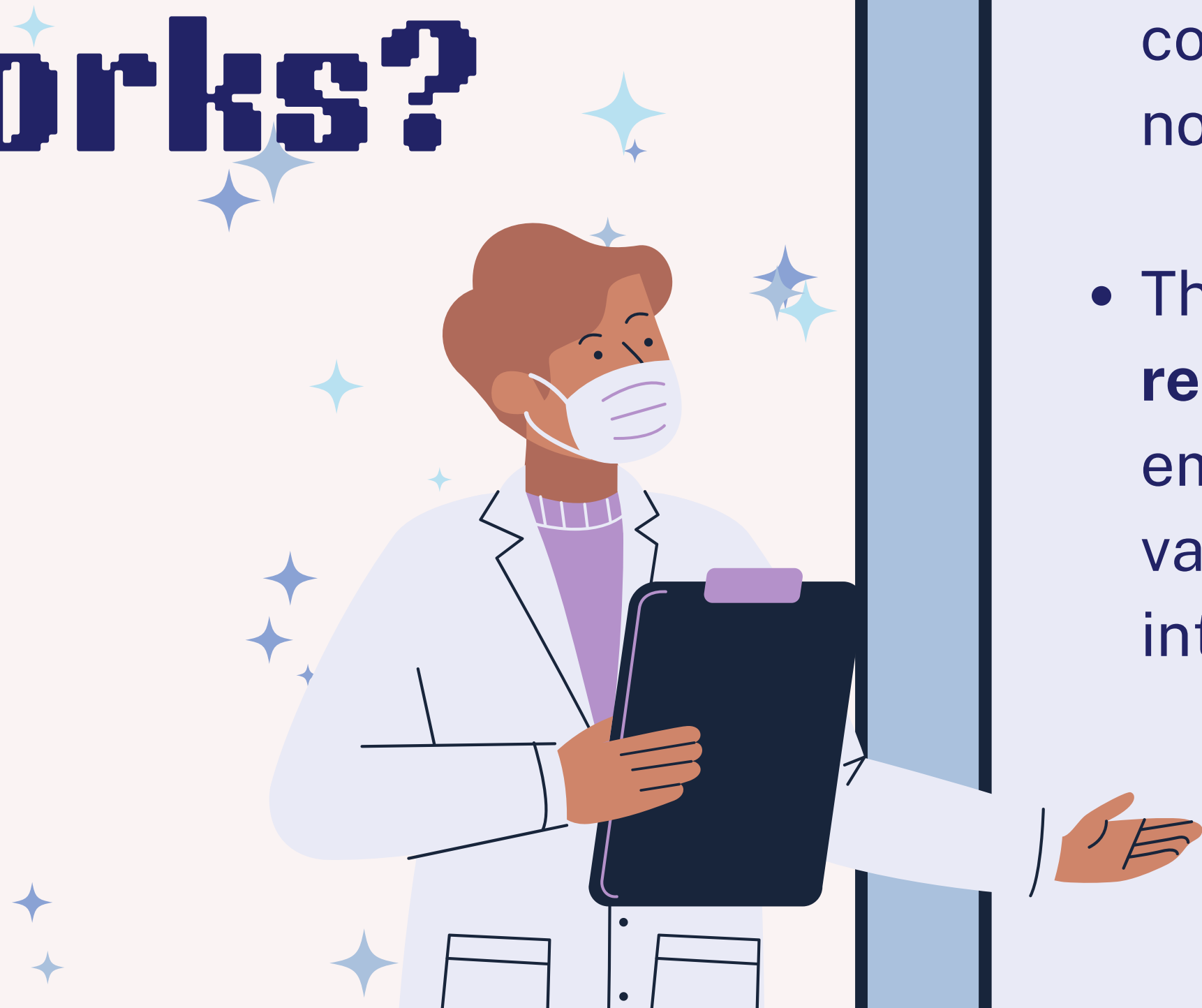


# What is Aslan?



- **Aslan** is a cutting-edge AI-driven emotional support system designed to complement traditional therapeutic approaches.
- It serves as a **personal, real-time assistant** to help users navigate emotional crises and prevent relapse.

# How It Works?



- **Aslan** engages users in conversational, nonjudgmental interactions.
- The AI dynamically adjusts its **responses** to validate emotions, identify needs and values, and offer personalized interventions.

# Features

## Emotional Validation

Acknowledges user emotions without judgment or assumptions.

## Response Mechanism

Decides whether to suggest an intervention first or help the user identify their needs, values, and emotions.

## Dynamic Interventions

Offers tailored suggestions based on the user's input  
Journaling prompts.  
Mindfulness exercises.

## Rant-Friendly Space

Allows uncensored emotional expression with mechanisms to flag concerning content based on threat levels.

# Workflow Design

## User Input

User shares their thoughts, feelings, or needs.

## AI Processing

Validates user emotions first. Offers suggestions or identifies core needs/values.

Dynamically adapts responses based on user feedback.

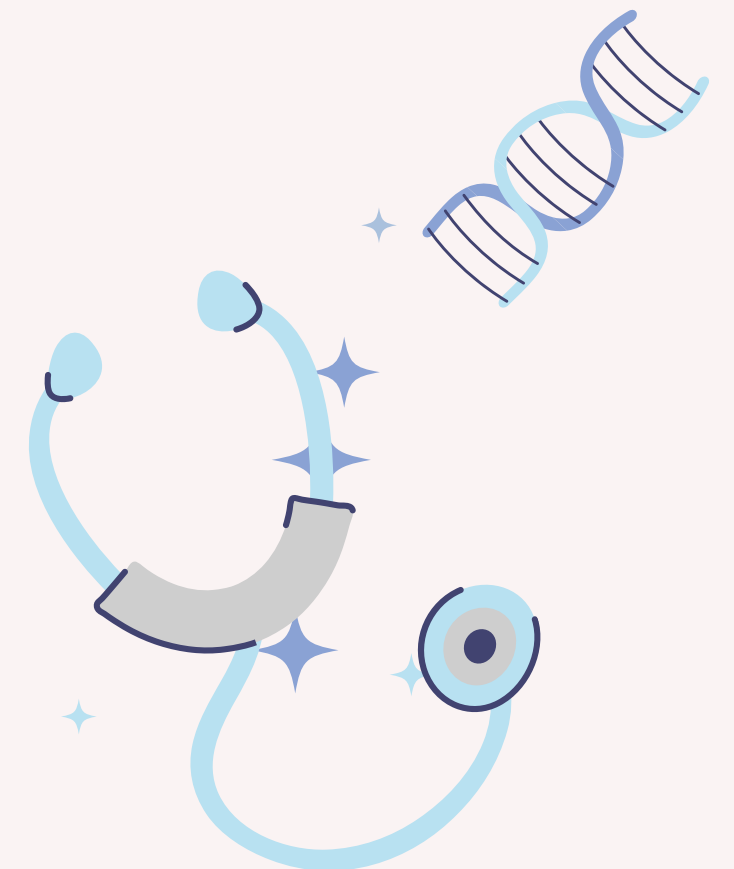
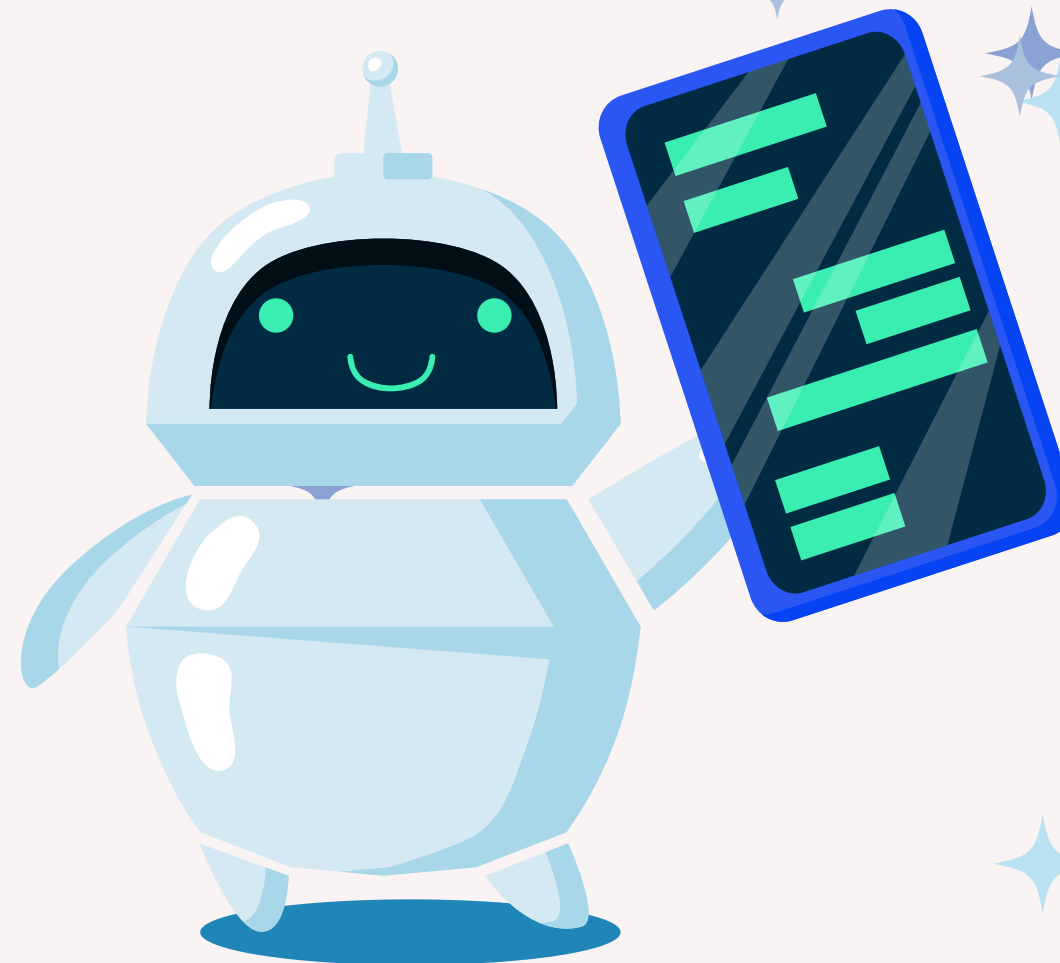
## Flagging System Workflow

**White Flag:** Neutral venting.

**Yellow Flag:** Minor concerns.

**Orange Flag:** Moderate risk.

**Red Flag:** Imminent danger (escalates to a psychiatrist).





# Benefits



## For Users

- Immediate emotional support and self-awareness tools.
- A proactive approach to crisis management.
- Reduced likelihood of relapse.



## For Stakeholders

- A scalable, cost-effective tool to complement therapy.
- Improved patient outcomes and reduced strain on healthcare systems.

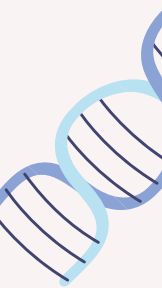
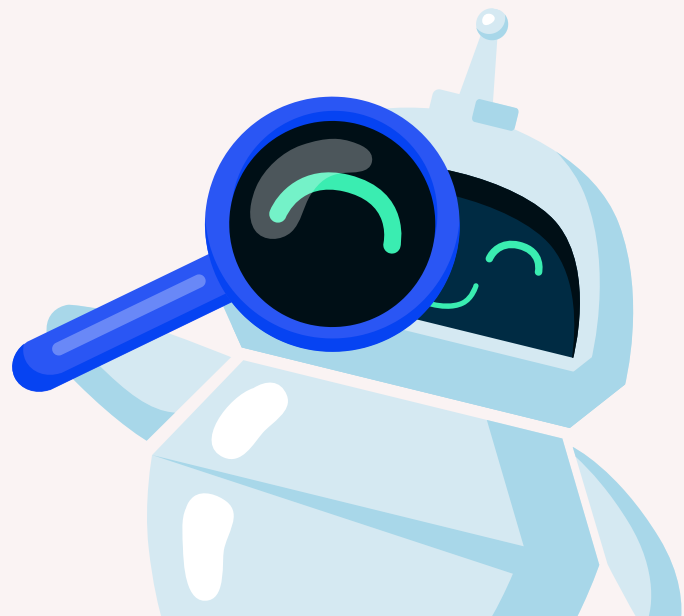
# Challenges

## User Predictability

AI must offer dynamic, unexpected responses to maintain engagement.

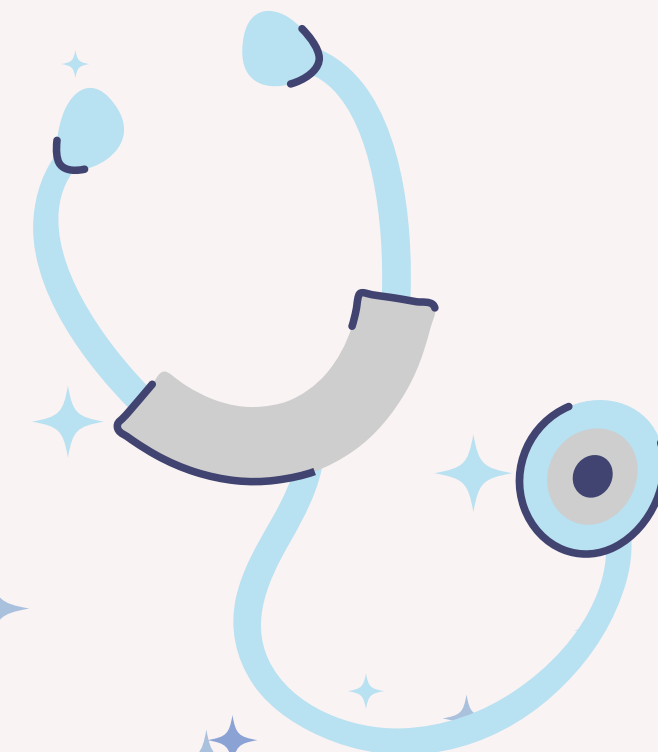
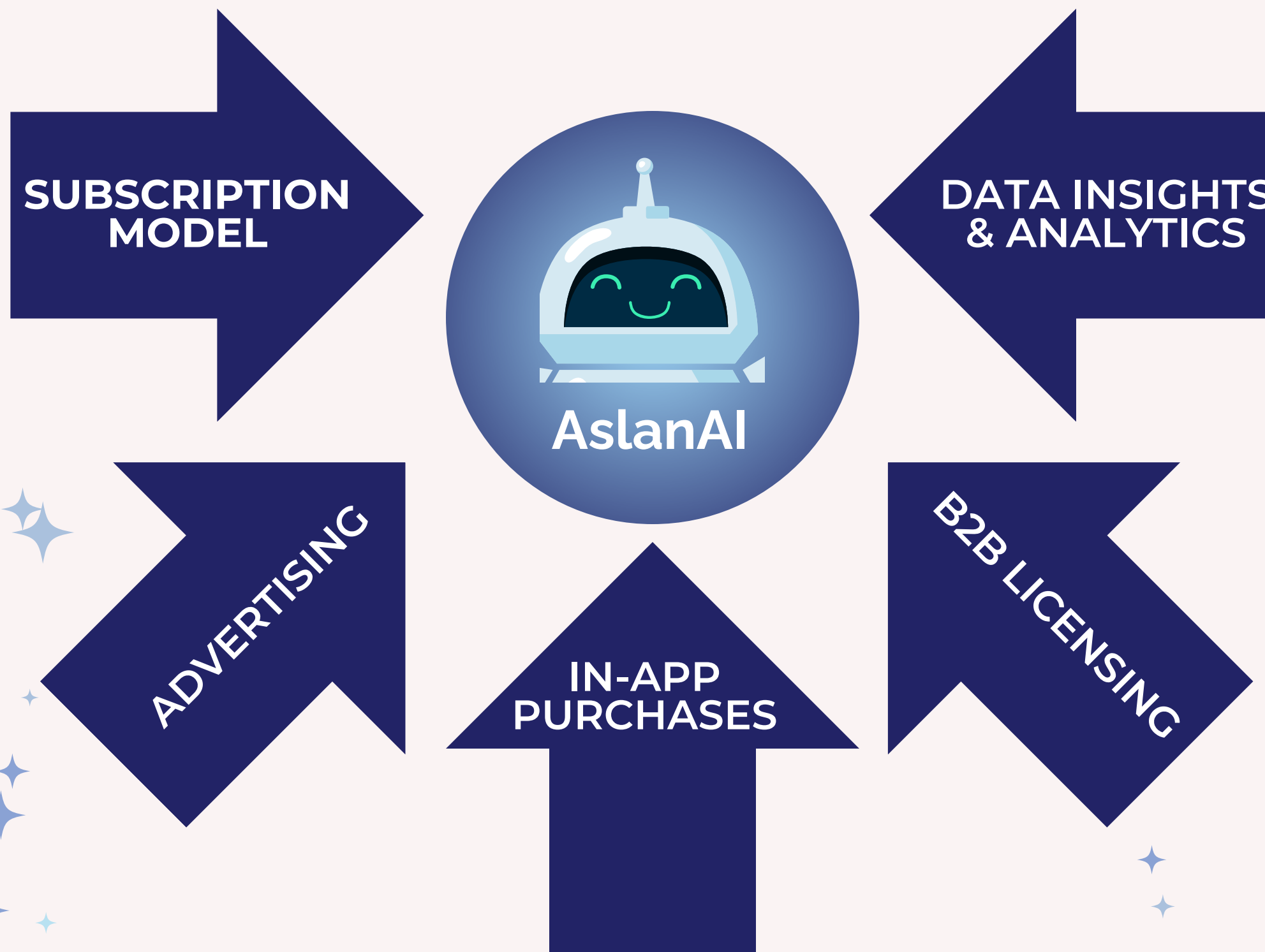
## Managing Explicit Content

Use the flagging system to address harmful intent or threats while preserving user trust and confidentiality.





# Revenue Streams



# Market Scope




## Total Addressable Market (TAM)

The **global mental health** and addiction recovery market, estimated at over \$380 billion annually, encompassing therapy services, digital health tools, and addiction recovery programs.



## Serviceable Available Market (SAM)

The **digital mental health** tools market, projected to grow to \$10.2 billion by 2027, focusing on AI-driven support solutions, therapy apps, and online recovery platforms.



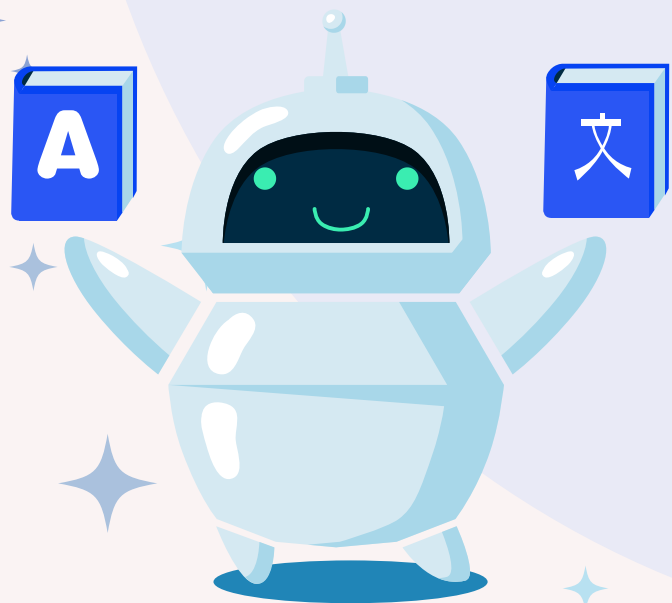
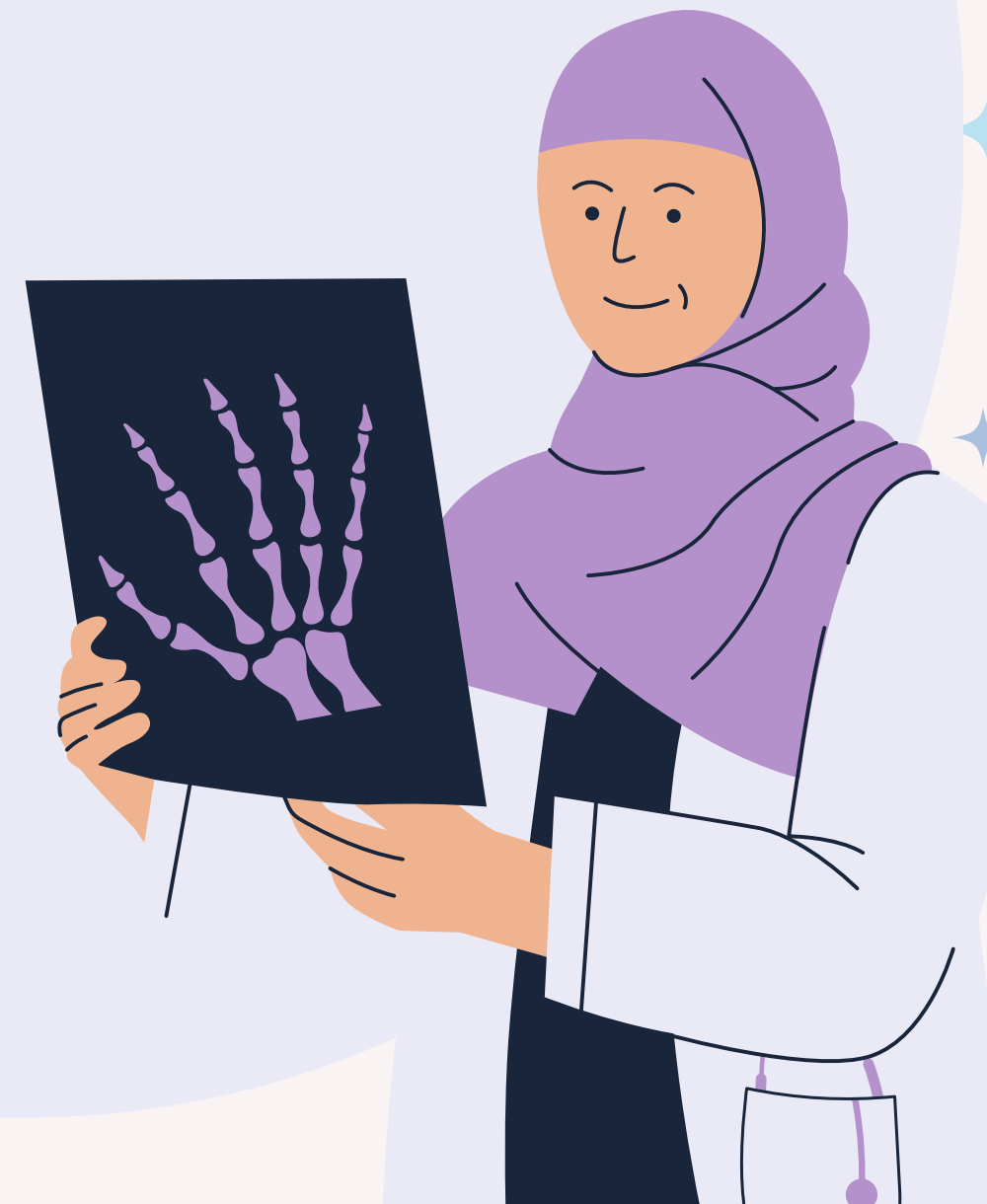
# Future Trends

## Continuous Improvement through Data & AI

Aslan AI could include **user feedback** to continuously improve its emotional support interventions, providing more effective solutions over time.

## Partnerships with Healthcare Providers

Collaborations with hospitals, rehab centers, and **mental health clinics** could drive B2B adoption, positioning Aslan AI as a critical tool in therapeutic settings.



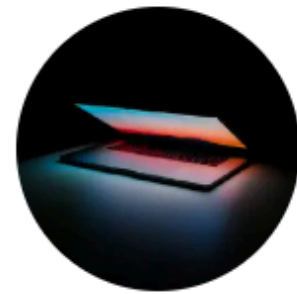
# Meet our Team



**Amina Asif**

ammy964

Full Stack Developer



**UWIZEYIMANA**

**Jean Pierre**

wizeyimana\_jean\_pierre74



**Candace Toriz**

Anni\_Atarah



**Hoang Nguyen**

hoangakashi896



**Muhammad**

**Hamza**

**Hassaan**

Hamza\_Hassaan

Front End and ML  
developer



The background is a light pink color with various medical-themed illustrations. At the top center is a small blue robot with a smiling face. To the left is a blue syringe with a white plunger. Above the syringe is a blue clipboard with a white sheet of paper and a blue cross. To the right is a blue pill bottle with a white label. There are also several small blue stars scattered throughout the background.

# Thank you for your attention

Please give us your feedback!



<https://lablab.ai/event/lokahi-innovation-in-healthcare/aslan-ai>



**DEMO!**

