

Sistem Design

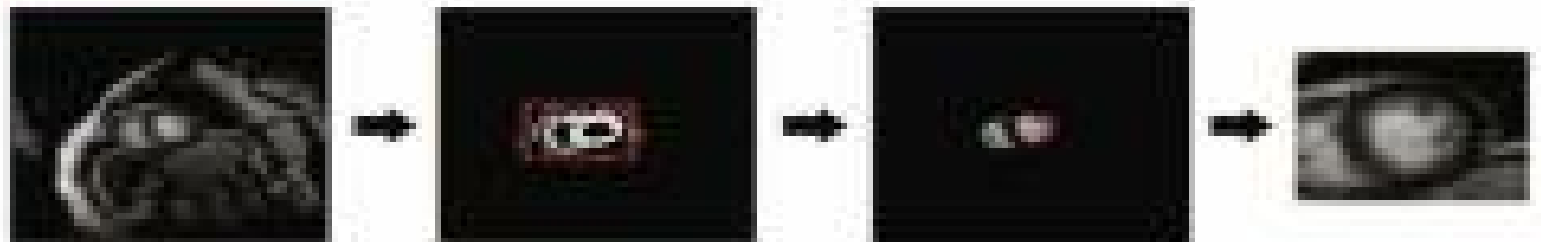
Lokahii innovation in healthcare hackathon

- In localization heart detection phase ROI detected and resize from MR data for detect process other condition, its for keep komputer at good process condition and increase accuracy.

Dissolve team

For infectious disease and pandemic

Localization Heart



Highlight the Problem & Solution:

Start with the core issue in our product resolves.

- Reporting case disease
- Reduce time for diagnose disease
- Make analitic for disease distribution and control
- Support patient for make good decisions for they health.

Detail Your Product: Discuss how it functions and the technologies involved.

- We build a AI technology use method computer vision, same like doctor use they eye to capture patients symptoms in disease.
- We have support AI use Method in small language models just use in medical operation with analitical based data in The operation. It's like a doctor can make diagnose about patients condition with any support tools.

Showcase User Interaction: A screen recording demonstrating user interaction is impactful.

The Link

Discuss Market Scope: Include Total Addressable Market (TAM) and Serviceable Addressable Market (SAM).

Total addressable market

- Public health department
- Local healthcare

Serviceable Addressable market

- Doctor
- Patents

Revenue Streams: Highlight potential revenue sources.

- Doctor (depends from their jobs they can cut time works).
- Patients (they can have realtime healthcare guide)
- Massif data collecting make reporting easily.
- From this points we have assume the potential revenue streams from operatinal profit.

Analyze Competitors: Delve into strengths and weaknesses, emphasizing your Unique Selling Proposition.

- The weakness now we just have prototype with support external resource.
- Because support from external resource maybe we can't support private data.
- Today the prototype too weak, then the other AI competitors.

Talk About Future Prospects: Share scalability and impact potentials.

- We no worries about intelligence resource again because we can train the AI model to do research.
- When the technology develop the technology for healthcare development to.
- It's can develop not to only for infectious and pandemic desase but also other disease like hearts attack or broke bone diagnose.

The Key: our focus

- Cut of time service and diagnose.
- Build in multiple AI model.
- Focus on healthcare markets.
- Make operational profits.
- No worries about intelligence resource.