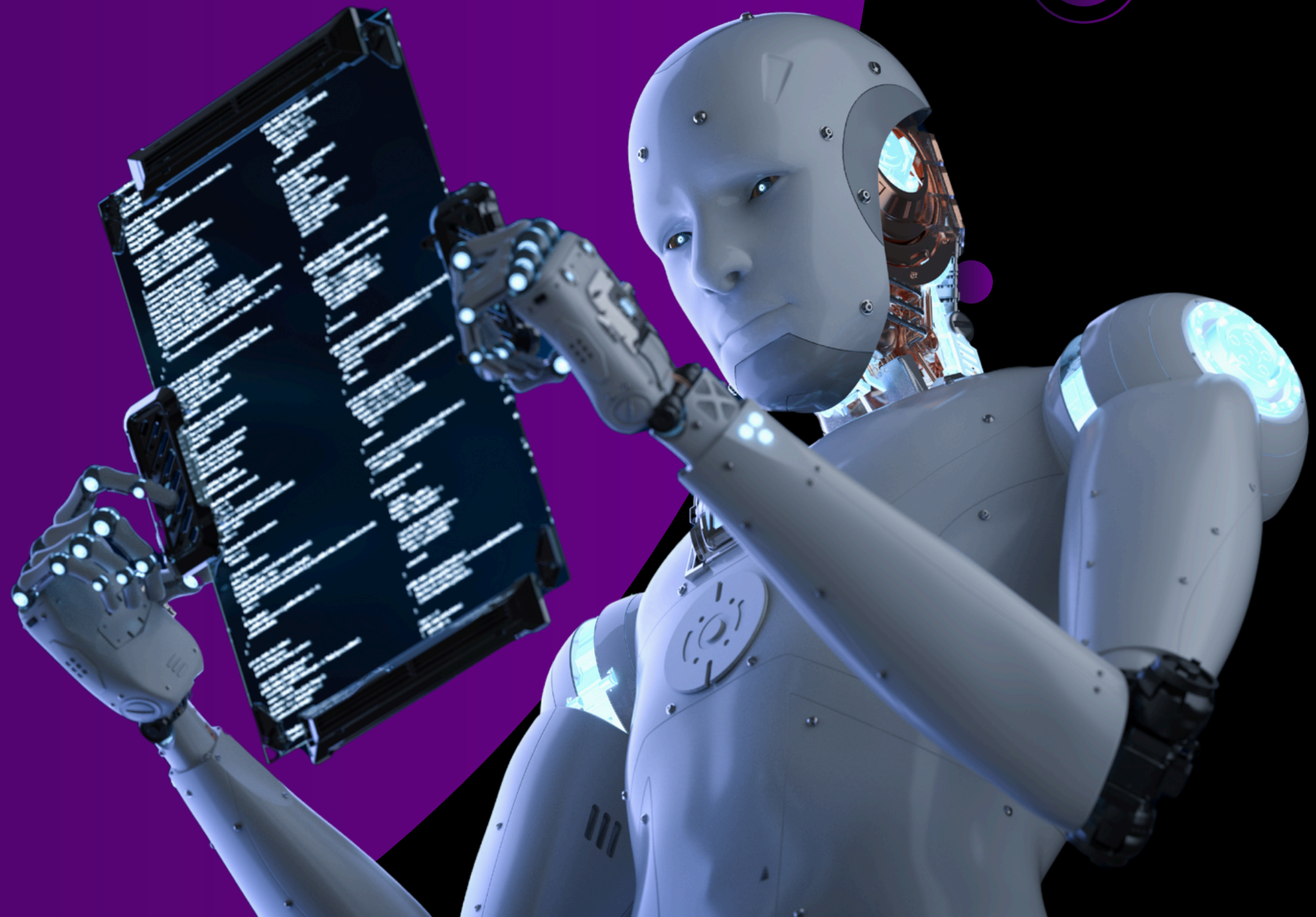


DOC MORPH-AI

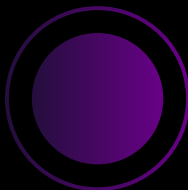
INNOVATION IN SENSITIVE
DATA PROCESSING

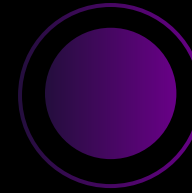




Welcome to DocMORPH-AI

DocMorph-AI is a platform designed to revolutionize the management of sensitive data, integrating advanced artificial intelligence and automating complex processes to reduce time and costs.





Introduction

Welcome to the DocMorph-AI

DocMorph-AI is a cutting-edge platform designed to revolutionize the management of sensitive data. Powered by advanced artificial intelligence, it automates complex processes, drastically reduces processing times, and ensures a level of accuracy unattainable with traditional methods.



DocMorph-AI is designed for government agencies and organizations aiming to optimize their workflows while reducing costs and inefficiencies.

With DocMorph-AI, we are redefining the standards for sensitive data processing, providing a secure, reliable, and high-performance platform.





Project Overview

DocMorph-AI leverages Grok AI to automate:

- Document upload and analysis.
- Automatic data compilation.
- Minimization of inefficiencies in traditional workflows.
- Reduction of human intervention in data management.

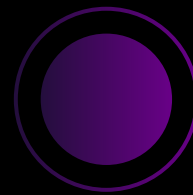
These features enable DocMorph-AI to:

- Significantly enhance operational efficiency.
- Reduce human errors and ensure greater accuracy.
- Allow organizations to focus on strategic activities by delegating repetitive processes to a reliable and automated system.

DOC MORPH-AI

Efficiency and Cost Reduction

costs



With DocMorphAI, the comparison with traditional methods is striking:

- **Processing Time:**

DocMorph-AI processes a document in just 2 minutes, compared to the 15-20 minutes required by traditional systems. This represents a time reduction of over 85%.

- **Accuracy:**

DocMorph-AI delivers 99.9% accuracy, drastically reducing common errors in manual processes.

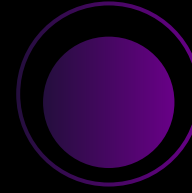
- **Productivity:**

Thanks to its speed and automation, an operator can process up to 240 documents per day with DocMorph-AI, compared to the 30-40 documents achievable with traditional methods.

- **Cost Savings:**

Operational costs per document decrease by up to 70%, thanks to process optimization and reduced human intervention.

DocMorph-AI revolutionizes workflows, delivering results in record time with a level of quality and precision that traditional methods simply cannot match.



Key Features

DocMorph-AI offers a suite of advanced features that ensure efficiency, accuracy, and security in handling sensitive data.

- **Secure Document Upload and Analysis:**

Users can upload documents in a fully protected environment. The AI instantly analyzes the files to identify and extract the required data in real time.

- **Automated Data Compilation:**

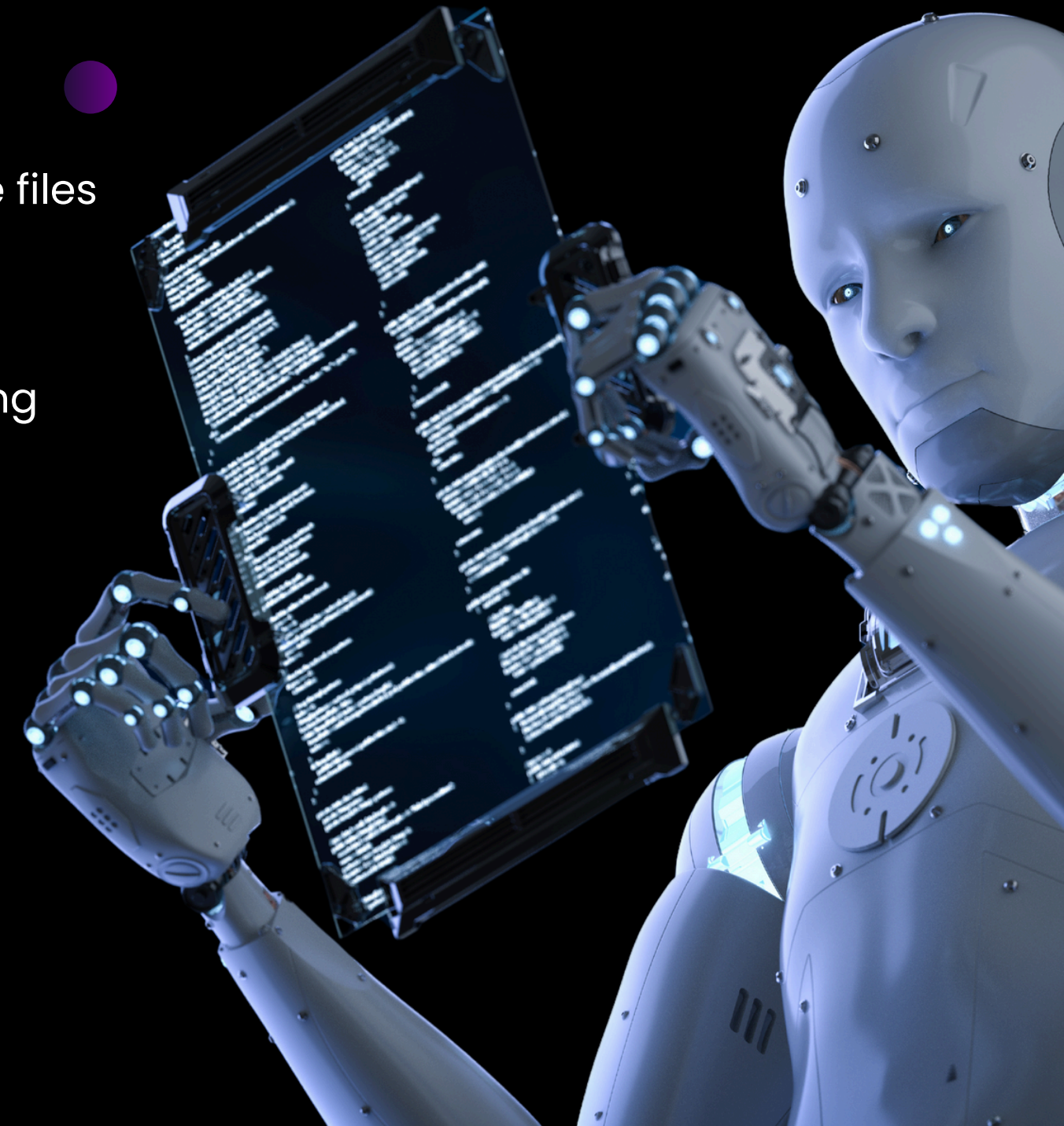
DocMorph-AI utilizes the extracted data to automatically populate new documents, ensuring compliance with regulatory standards and minimizing errors.

- **Transmission to Governments or Relevant Entities:**

Once completed, the document is securely transmitted to the designated authority or organization. This eliminates complex manual steps and guarantees speed and precision.

- **Immediate Deletion of Sensitive Data:**

After processing, all data is instantly deleted without being stored on servers, ensuring total confidentiality and security for users.





Security and Privacy

DocMorph-AI places data security and privacy at the core of its operations, implementing strict measures to ensure the protection of sensitive information throughout the entire processing cycle.

- **Real-Time Processing Without Data Retention:**

DocMorph-AI processes sensitive data exclusively in real time. Once processing is complete, all information is immediately deleted, ensuring that no data is stored or saved on servers.

- **Immediate Deletion of Sensitive Data After Use:**

Data is automatically erased at the end of the process, ensuring there is no possibility of unauthorized access or misuse.

- **Compliance with Global Regulations:**

DocMorph-AI operates in accordance with major global data protection regulations, such as GDPR, providing users with a secure platform that meets the highest standards.

There is absolutely no risk of privacy breaches, as the system never retains processed data, deleting it immediately after use. This offers users an unprecedented level of security, ensuring the confidentiality of sensitive information even in the most critical contexts.



**Data
Privacy**

 **Shift**



Why Choose DocMorph-AI?

- **Speed and Efficiency:**

Automates repetitive tasks, saving time and resources.

- **Cost Reduction:**

Requires fewer resources for data processing.

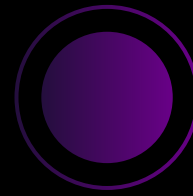
- **No Data Retention:**

Ensures maximum security for sensitive information.

- **Innovation:**

Delivers modern solutions for outdated workflows.





Future Developments

DocMorph-AI is focused on expanding its capabilities to meet evolving user needs with advanced tools and integrations.

- **Integration with Google Drive and Dropbox:**

The platform will support reading and processing documents directly from cloud services such as Google Drive and Dropbox, further simplifying file access and processing for users.

- **Introduction of a Freemium Model:**

A freemium system will be introduced, allowing users to access a basic version of the platform for free with limited features, while unlocking advanced tools and higher capacities through a paid plan.



These future developments aim to make DocMorph-AI more versatile and accessible, while maintaining a strong focus on efficiency and security, providing additional value to a broader audience.

