




**YOUR AI-POWERED COMPANION FOR
SMARTER, FASTER KNOWLEDGE
DISCOVERY.**

Federica Tarsitano
Giselle Frederick

Nouman Munib
Amina Asif




As she is preparing for her final exam, Mia has so many questions in mind.

I have a long list of resources, where do I start?

She lives in a rural area, where access to tutors and resources is limited.

THE PROBLEM

- Overwhelming amount of study material (books, PDFs, assignments, research papers).



How can I focus
on what really
matters for my
exam?

Is there a
better way to
learn smart?

- Difficulty finding specific information quickly.
- Lack of personalized, context-aware study tools.
- Time-consuming searches across fragmented resources.



!

Hei, why don't you
try ScholarShelf?

Input your prompt
and get answers
from SchoBot!

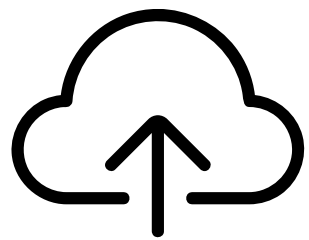


SOLUTION

- Centralized Knowledge Hub: Upload, organize, and manage all your study resources in one place.
- AI Chatbot Integration: Ask context-specific questions based solely on your uploaded content.
- Multi-File Support: Process multiple documents seamlessly (PDFs, DOCX, TXT).
- Lightweight Design: No complex embeddings; works efficiently with minimal resources.

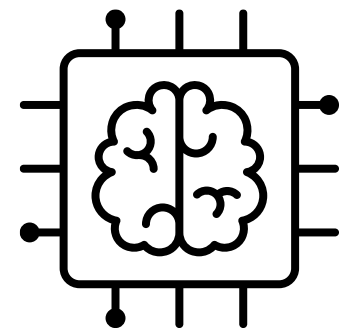


KEY FEATURES



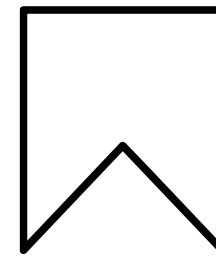
Document Uploads

Supports multi-format document processing.



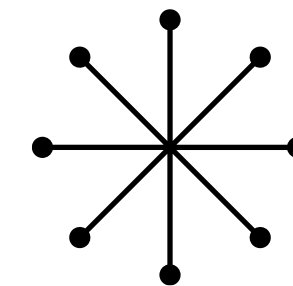
Contextual AI

AI chatbot answers questions using uploaded resources.



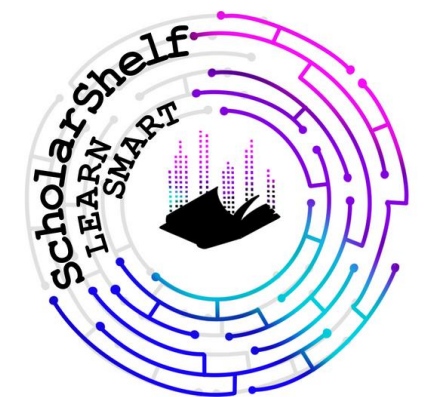
Persistence

Saves processed data for seamless user experience across sessions.



Scalable

Applicable to various domains like education, healthcare, legal, and corporate training.

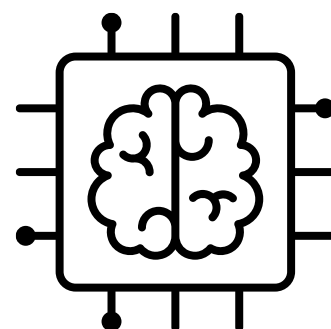


HOW IT WORKS



Upload

Users upload files (PDFs, DOCX, TXT).



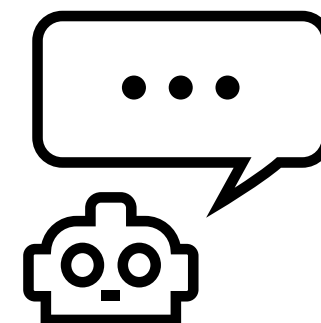
Processing

Files are processed into text chunks and saved.



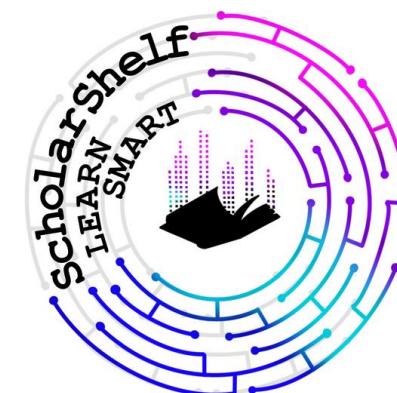
Ask Questions

Users ask queries via the chatbot.



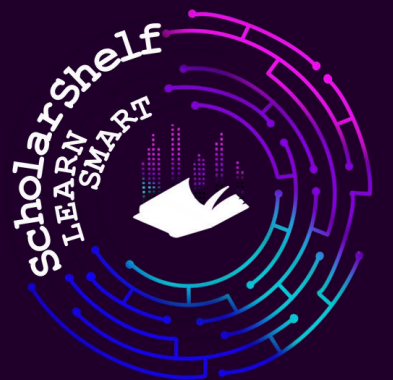
Response

ScholarShelf retrieves relevant chunks and generates context-specific answers.



Demo

YOUR AI-POWERED COMPANION FOR SMARTER, FASTER
KNOWLEDGE DISCOVERY.



TECH STACK



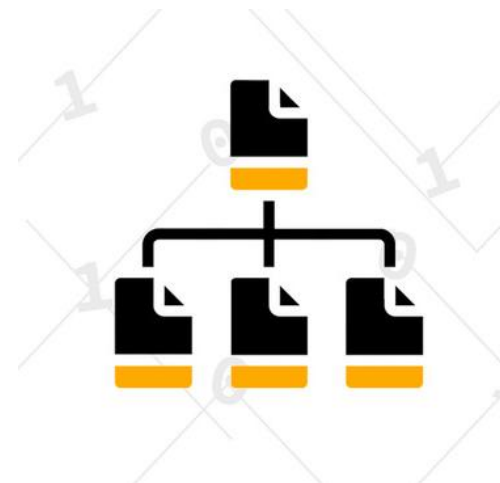
Backend:

Python
(Flask/Streamlit),
AI/ML API.



Frontend:

Streamlit



File Processing:

PyPDF, Python-
docx.



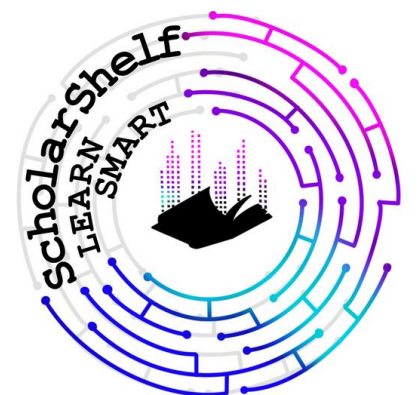
Data Persistence:

JSON-based
lightweight
storage.



AI Models:

Deepseek R1



OTHER POTENTIAL USE CASES



HealthCare

Upload clinical guidelines, patient reports, or research papers for quick insights.



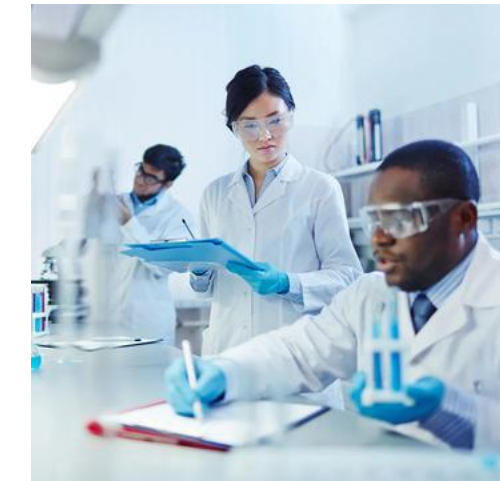
Legal Industry

Streamline case preparation by querying legal documents.



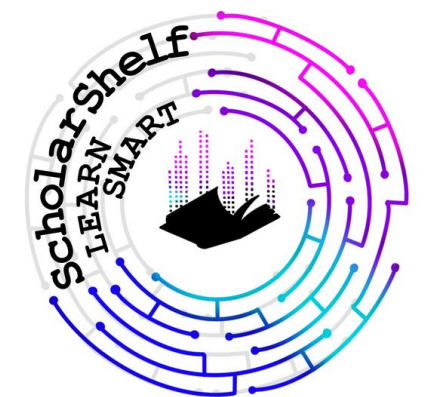
Corporate Training

Simplify onboarding and training with accessible learning resources.

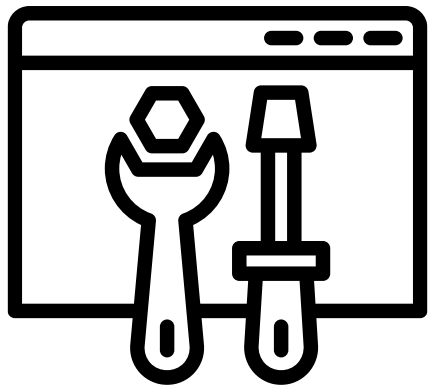


Research Teams

Collaborate and retrieve critical information across large document repositories.

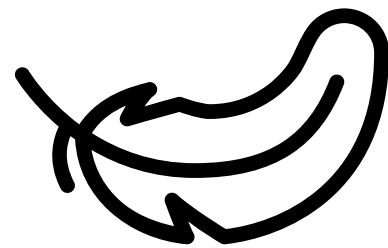


COMPETITIVE EDGE



Personalization

Tailored answers using only user-uploaded content.



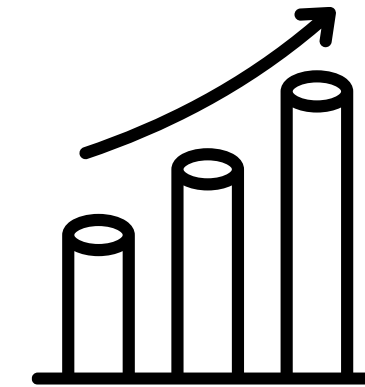
Lightweight

No dependency on embeddings or heavy databases.



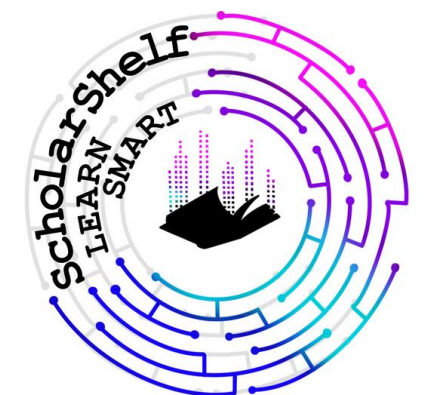
Accessibility


Works efficiently on low-resource devices.



Scalability

Flexible to expand into other industries and use cases.





Question by question,
ScholarShelf felt like a
tutor or a study partner.
Knowledge flowed freely,
with focused and precise
information!



Thank you!