

AGENTS WHO LORE WORKFORCE
POWERED BY

OPTIMIZING

20 |
BUSINESSES

AI

DeepSeek Business Creator

AGENCY
PERSONAL
OPTIMIZATION

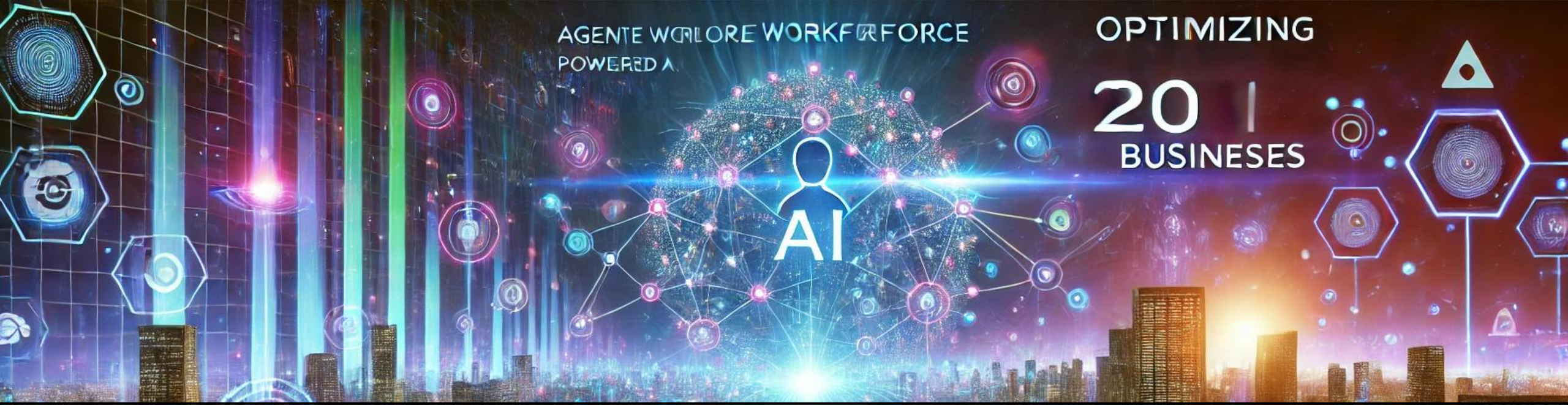


AGENTE WOLFORE WORKFORCE
POWERED A

OPTIMIZING

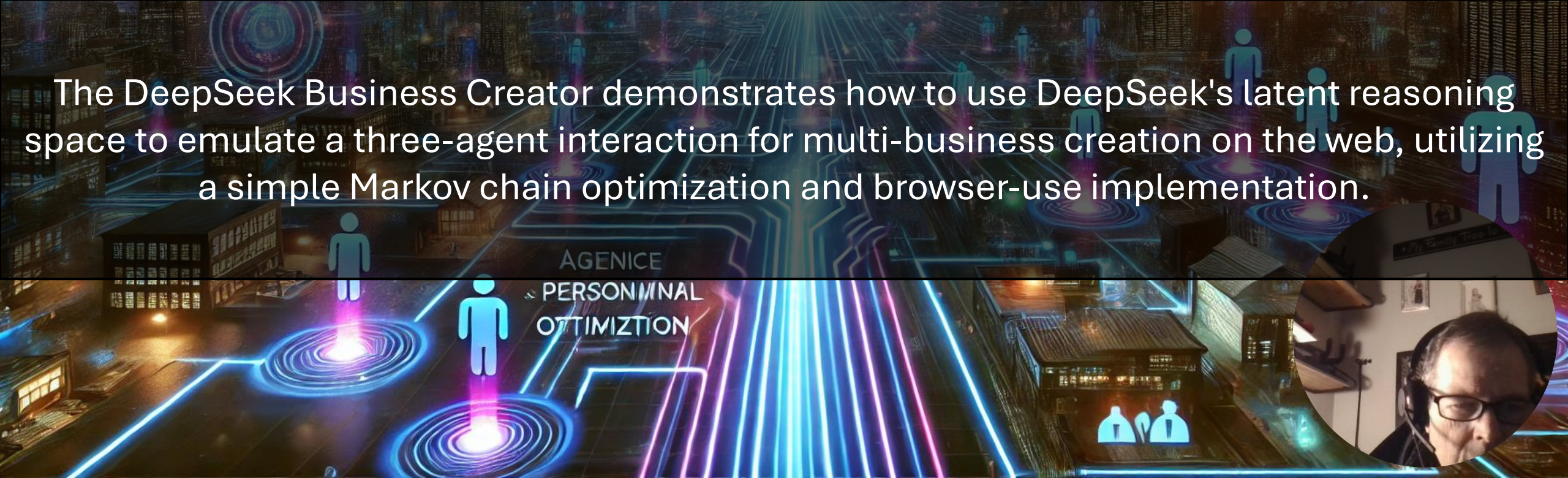
20 |
BUSINESSES

AI



The DeepSeek Business Creator demonstrates how to use DeepSeek's latent reasoning space to emulate a three-agent interaction for multi-business creation on the web, utilizing a simple Markov chain optimization and browser-use implementation.

AGENCE
PERSONNAL
OPTIMIZATION



DeepSeek

AGENTE WORKLORE WORKFORCE
POWERED A

OPTIMIZING
20 |
BUSINESSES

1. Communication

2. Concept

3. Components

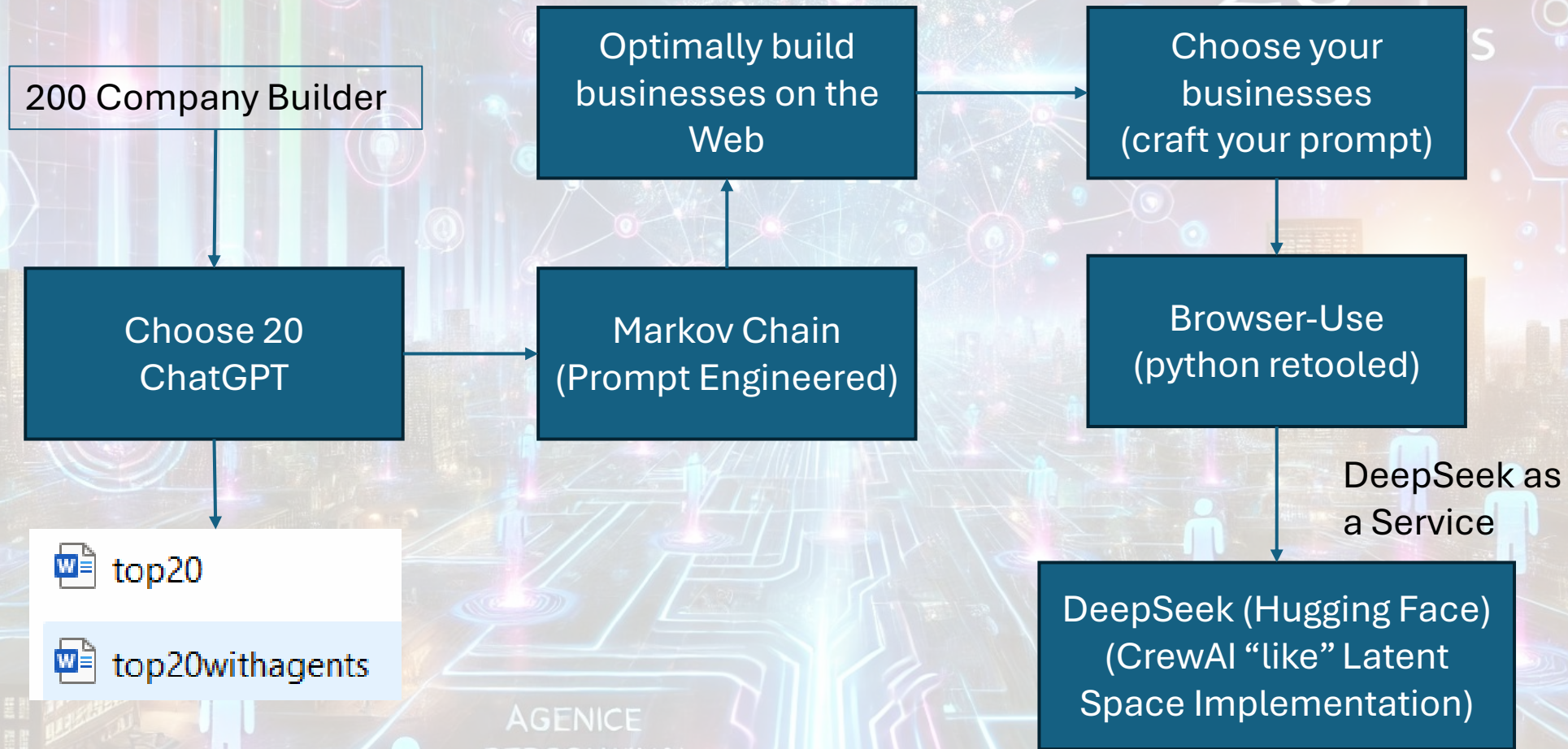
4. Configuration

5. Completion

5 Cs



DeepSeek as a Service Using Browser-Use (Project Flow)



DeepSeek Markov Chain Optimization

Simulation Parameters

Number of Businesses

20

- +

Max Iterations

100

- +

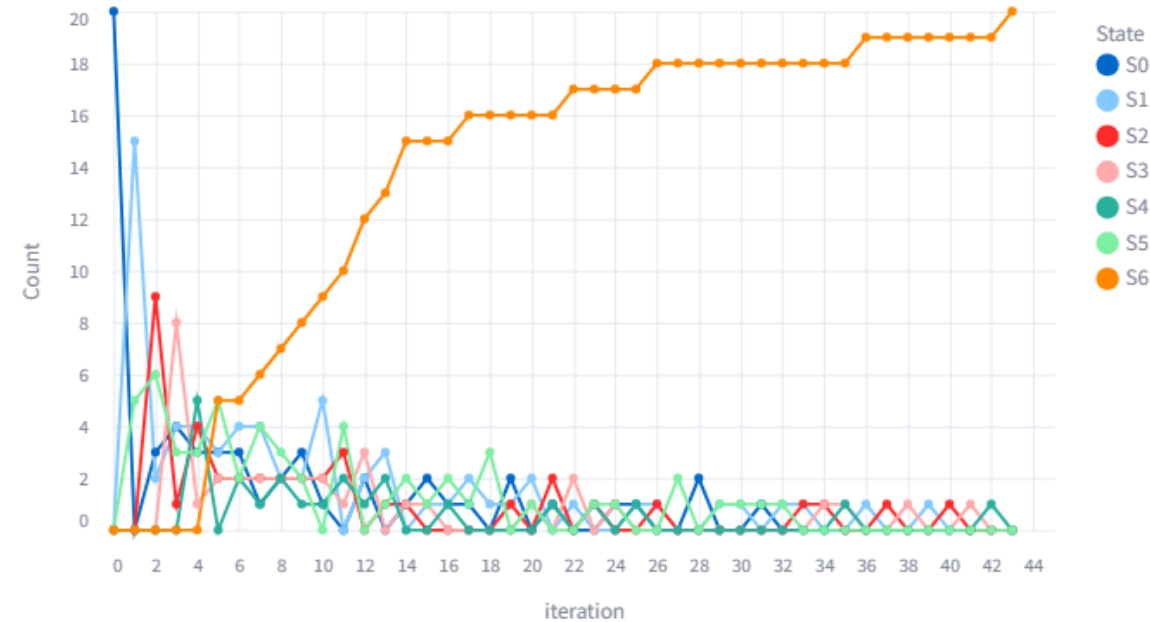
Run Simulation

Business Creation Simulation via Markov Chain

This simulation mimics the process of creating businesses. Adjust the parameters below and run the simulation.

Simulation Complete!

State Distribution Over Iterations



Browser-Use (Multiple Browser Modification)

Note: Browser-Use was modified to bring up multiple browser at once to allow simultaneous business creation.

Bring up the website <https://huggingface.co/spaces/llamameta/DeepSeek-R1-Chat-Assistant-Web-Search> and input create a 10 point business plan for Renewable Energy Yield Optimization using the agents Resource Assessment Specialist, Predictive Maintenance Planner and Grid Integration Coordinator

Bring up the website <https://huggingface.co/spaces/llamameta/DeepSeek-R1-Chat-Assistant-Web-Search> and input create a 10 point business plan for Spatial Data Analytics for Retail using the agents Store Layout Specialist, Computer Vision Sensor Engineer, and Retail Insights Analyst

Bring up the website <https://huggingface.co/spaces/llamameta/DeepSeek-R1-Chat-Assistant-Web-Search> and input create a 10 point business plan for AI-Driven Early Detection Systems using the agents Medical Imaging Curator, Diagnostic Algorithm Developer, and Clinical Integration Lead

Bring up the website <https://huggingface.co/spaces/llamameta/DeepSeek-R1-Chat-Assistant-Web-Search> and input create a 10 point business plan for AI for Personalized Genomic Medicine using the agents Genomic Data Curator, Pharmacogenomics Modeler, and Clinical Adoption Consultant

Bring up the website <https://huggingface.co/spaces/llamameta/DeepSeek-R1-Chat-Assistant-Web-Search> and input create a 10 point business plan for Efficient Retail Inventory Management using the agents Sales Demand Predictor, Inventory Optimization Advisor, and Edge Device Deployment Engineer

Browser-Use (Multiple Browser Modification)

DeepSeek R1 Chat Assistant Web-Search

huggingface.co/spaces/llamameta/DeepSeek-R1-Chat-Assistant-Web-Search

Spaces

llamameta

DeepSeek-R1-Chat-Assistant-Web-Search

Running

App

Files

Community

19

System message

You are a friendly Chatbot created by DeepSeek

HF API Key (optional)

If error occurs, use your own API key. You'll get R1 premium access.

Advanced Settings

20

21

22

23

24

25

26

27

28

29

30

31

32

33

Browser Use

Chat with DeepSeek-R1

Create a 10 point business plan for Spatial Data Analytics for Retail using the agents Store Layout Specialist, Computer Vision Sensor Engineer, and Retail Insights Analyst.

Okay, so I need to create a 10-point business plan for Spatial Data Analytics in Retail, using three agents: Store Layout Specialist, Computer Vision Sensor Engineer, and Retail Insights Analyst. Hmm, let's break this down step by step.

First, I should understand what each agent does. The Store Layout Specialist probably deals with optimizing how stores are laid out to maximize sales and customer flow. The Computer Vision Sensor Engineer would handle the technology side, installing sensors and cameras to collect data on customer movements and behaviors. The Retail Insights Analyst would take that data and analyze it to provide actionable insights to improve retail performance.

Now, for the business plan. It needs to have 10 points, each covering a specific aspect of the business. Let me think about the key areas that a business plan usually covers. Typically, it includes Executive Summary, Market Analysis, Product/Service Offerings, Marketing Strategy, Sales Strategy, Operations Plan, Financial Plan, Risk Management, Growth Strategy, and Conclusion.

Thanks to the Team

OPTIMIZING

20 |
BUSINESSES



Michael Lively
quantumai
Data Scientist



Darcy Liu
darcy_liu483



Maheen Touqeer
MT_01



Tayyab Rehan
Tayyabrehan786
Student



Habib Ullah
habibkhan004



WAQAS ALI
WAQAS
Student



AGENCE
PERSONNAL
OPTIMIZATION