



SereniMind

Your AI Companion for Calm, Clarity, and Support.

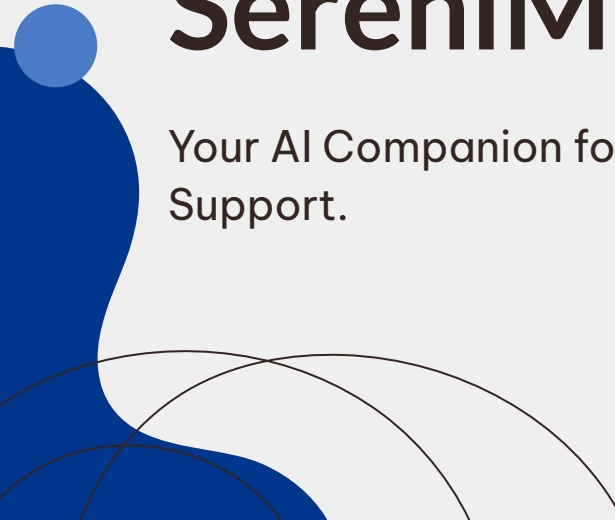


Table of contents

01

The Problem Statement

02

Our Solution

03

Key Features

04

Tech Stack

05

Future Enhancements

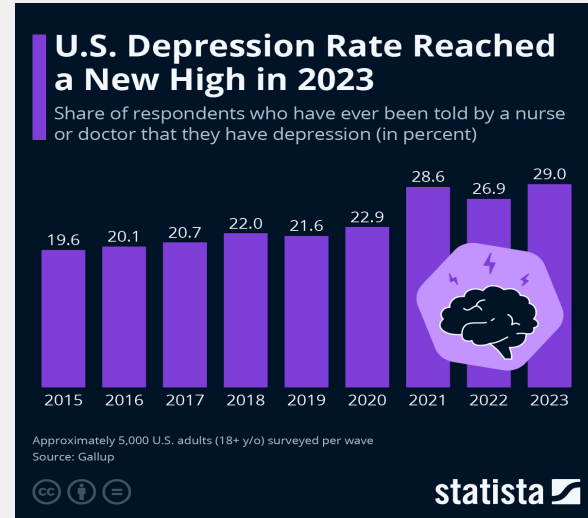


01

The Problem Statement

The Growing Mental Health Crisis

- **1 in 5 adults** experience mental health issues.
- Many face **stigma, high costs, and lack of access** to therapists.
- **Traditional chatbots fail** to maintain meaningful conversations.
- Need for **continuous, context-aware, and empathetic AI support**.





02

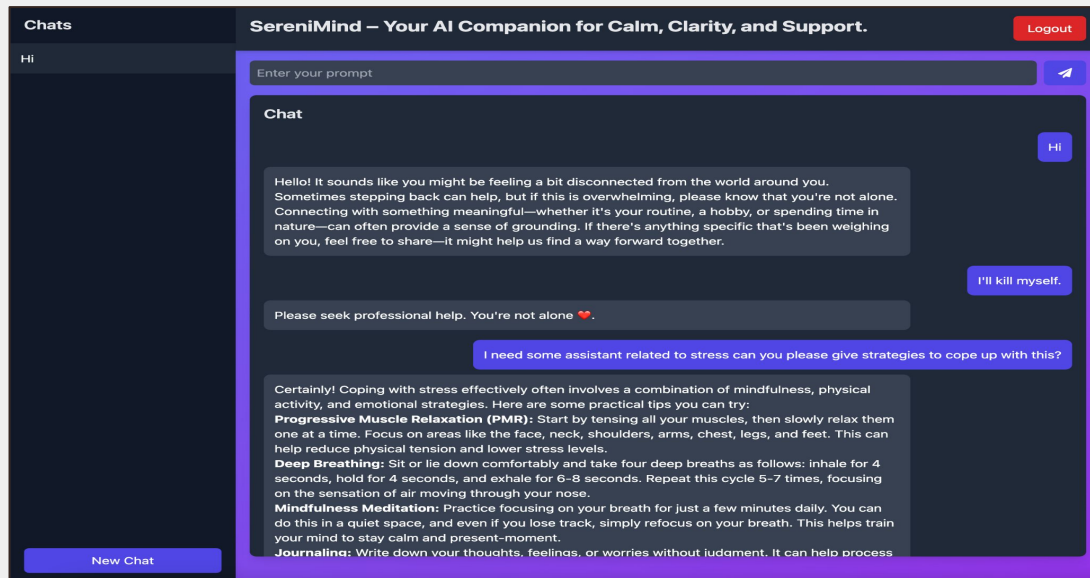
Our Solution



Meet SereniMind – A Smarter AI Chatbot

- Provides empathetic support with conversational continuity.
- Keeps context across messages for meaningful discussions.
- Allows users to resume past conversations seamlessly.
- Designed to encourage self-help, not replace professional help.







03

Key Features



What Makes SereniMind Special?



Context Awareness

Remembers past interactions.

User-Specific Chats

Personal conversation history.

Secure & Private

Authentication-based chat access.

Scalable

Ready for future AI-powered enhancements.



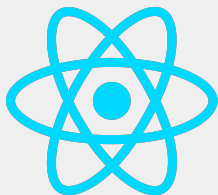
04

Tech Stack

Built with Cutting-Edge Technologies

Frontend

React, Zustand
(state
management),
React Query.



Backend

FastAPI (Python),
SQLite (database).



AI Model

Ollama's
deepseek-r1 for
empathetic
responses.





05 Future Enhancements



The Future of SereniMind



Multimodal Support

Add voice & image-based interactions.



Therapist Integration

Direct referrals for professional help.

Multilingual AI

Expanding to different languages.



Sentiment Analysis

Track emotional state for personalized responses.





Our team

Mateeh Ullah

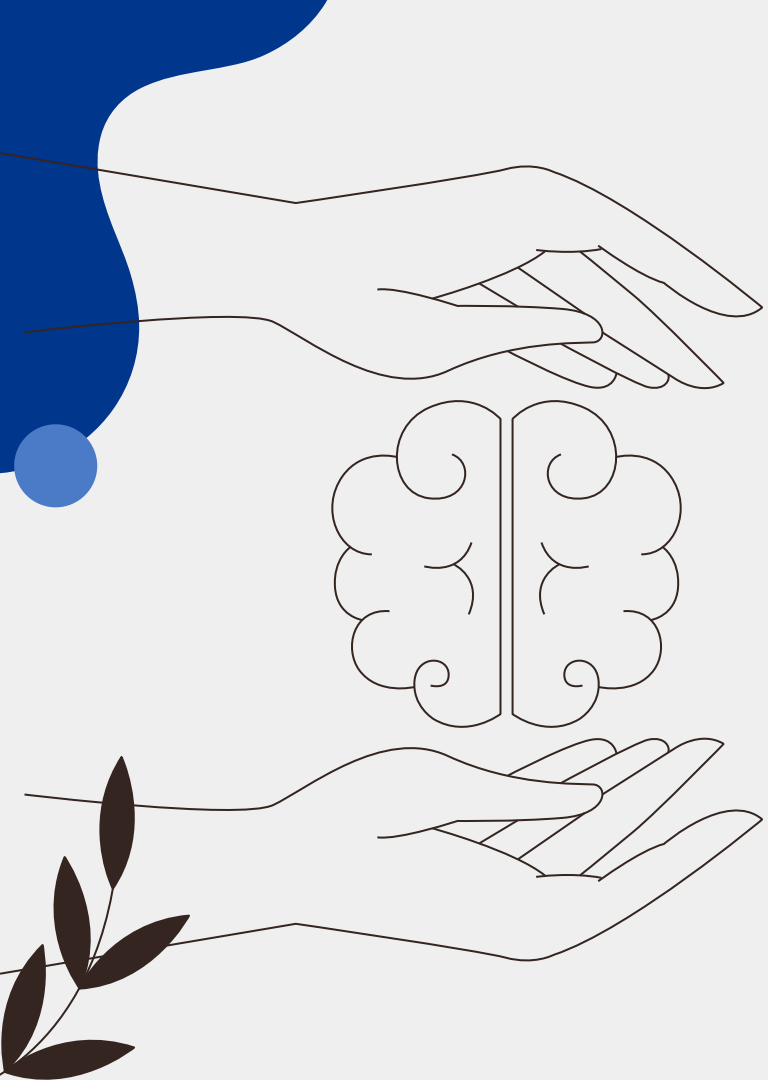
Muhammad Shahroz

Saad Shahbaz

Sana Adeel Khan

Nimra Khan





Thanks!

