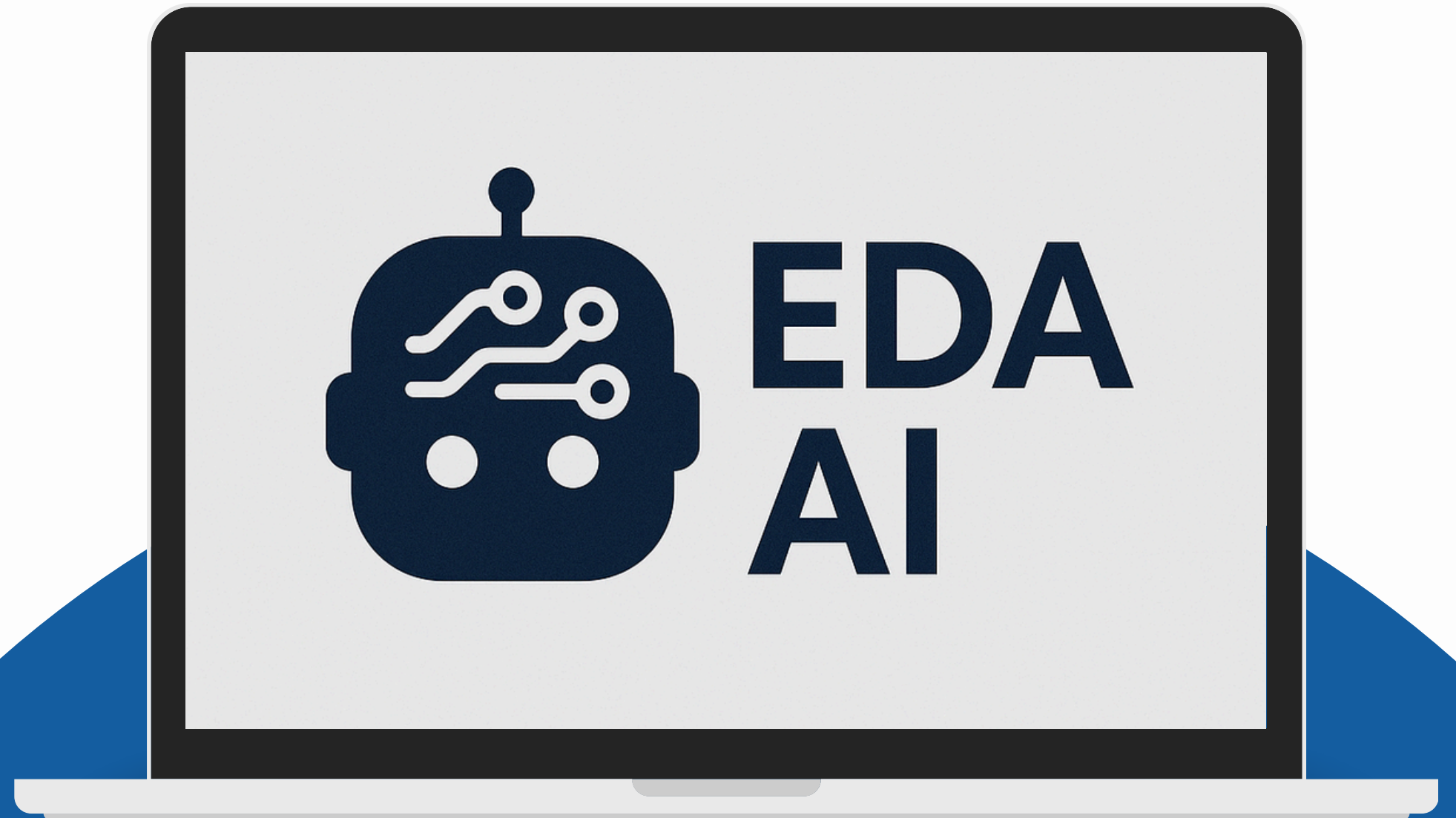


Team CRACKer(s)

EDA AI

A cutting-edge solution to
Data and Machine Learning



Problems

Problem 01

Exploratory Data Analysis can take up to 70% project timeline

Problem 02

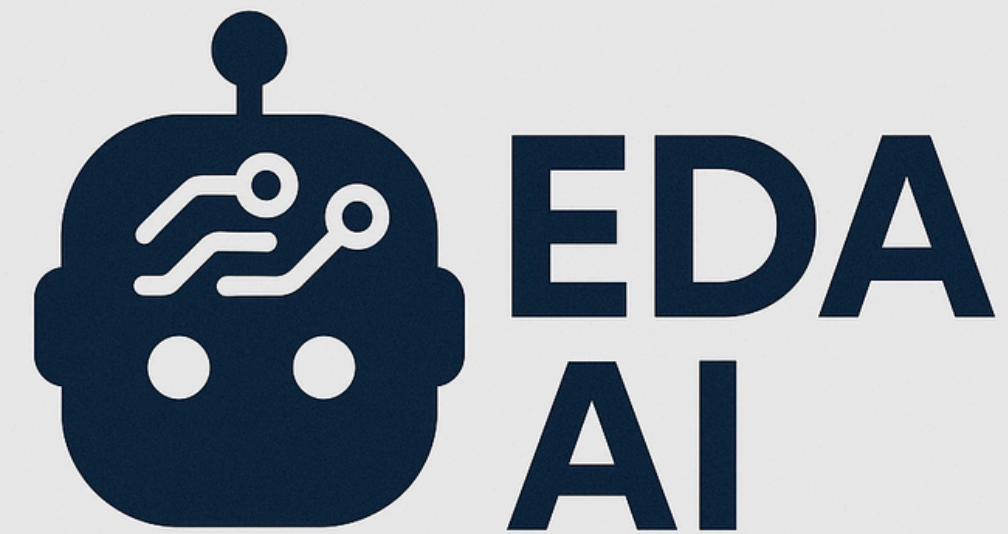
The learning curve for newbies is relatively steep: Coding, math, infrastructure setup, etc...



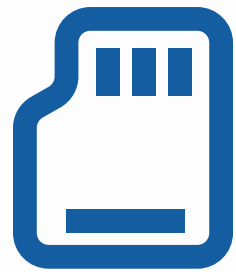
Solution

Introducing EDA AI – an AI companion on your data analysis journey

EDA AI leverages latest AI models to understand your data, and suggests what could be done next (visualization, clustering, cleaning, imputing, etc...)



Objectives



Objective 01

Simplify the process,
making it more
intuitive to newbies



Objective 02

Reduce the time and
costs for setting up,
coding, etc... and focus
more on the data
characteristics itself

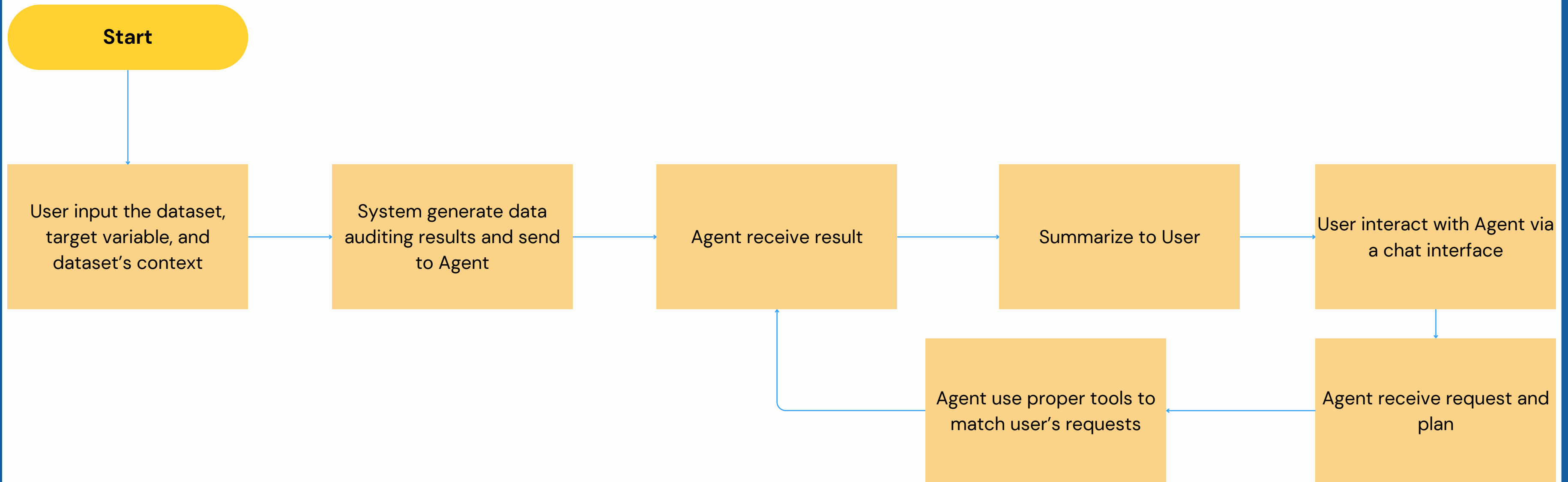


Objective 03

Analyse data with
visualization, giving
analysts more ideas on
data's characteristics



Workflow



Choose a file



Drag and drop file here

Limit 200MB per file • CSV, PARQUET, XLSX

Browse files

Enter the name of target column (if have)

Describe about your dataset's background and annotate each column

Upload

Create



To summarize the understanding of the dataset, let's examine each column based on the specified questions:

1. **customerID:**

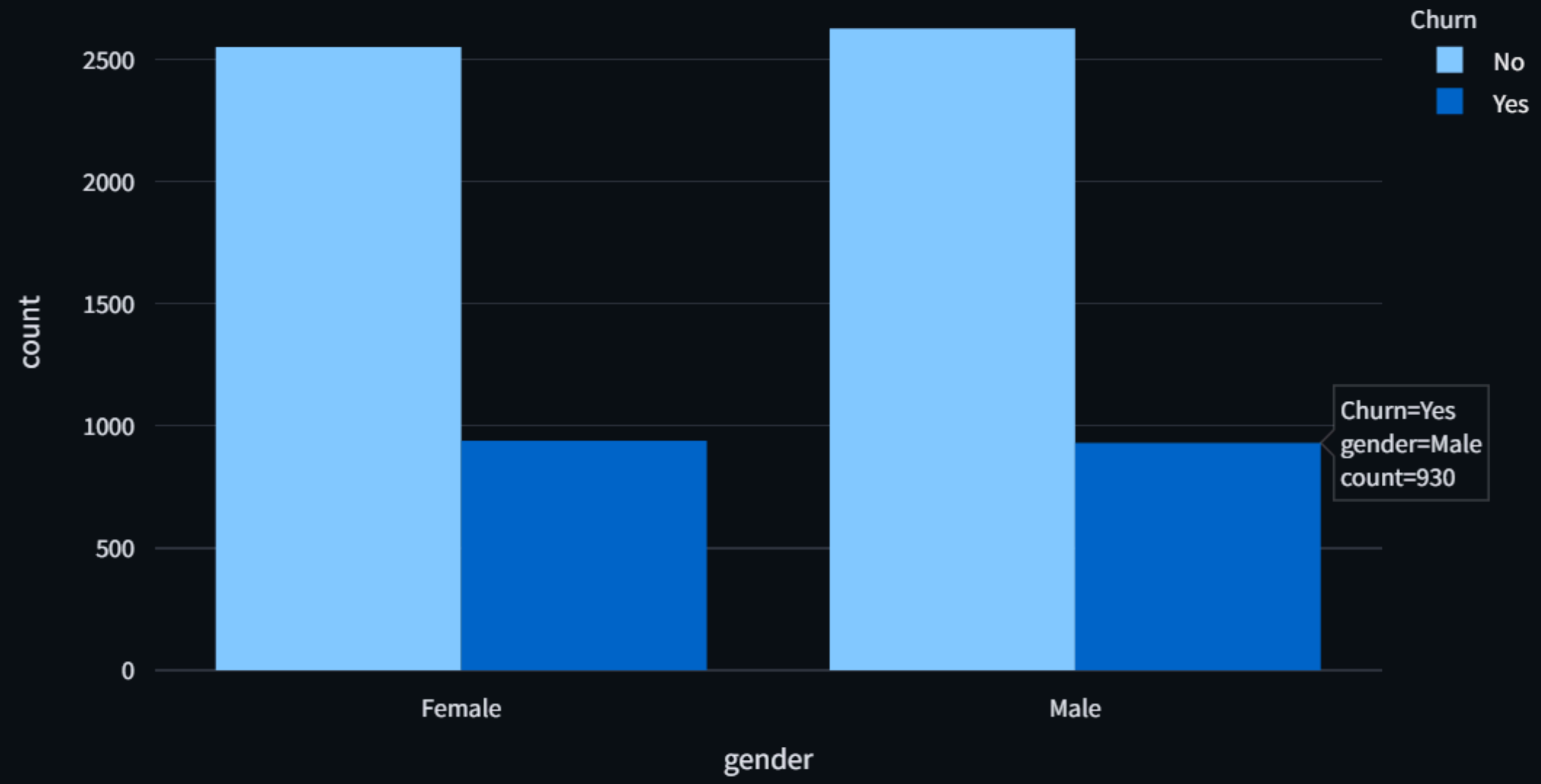
- **Data Type:** Object
- **Distribution:** Not applicable for ID columns
- **Unique Values:** 7043 unique values; each customer has a unique ID
- **Missing Value Percentage:** 0%
- **Imbalance Data:** Not applicable for ID columns

2. **gender:**

- **Data Type:** Object
- **Distribution:** Categorical
- **Unique Values:** 2 (Male, Female)
- **Missing Value Percentage:** 0%

Say something





Revenue Stream



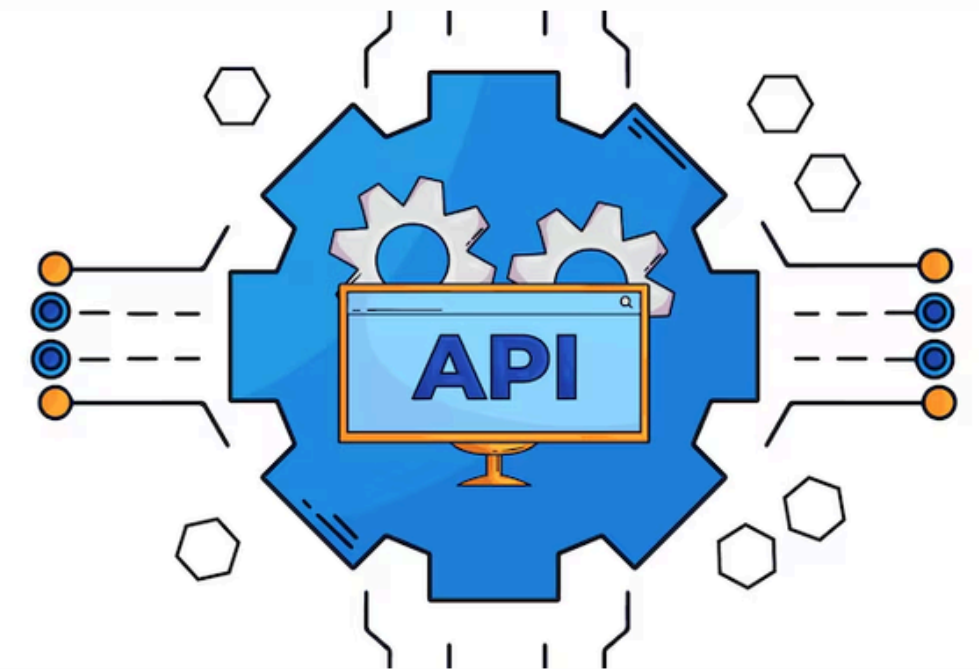
Freemium

Offer a free version with limited features, ads, and cooldown time.



Tiered SaaS

Offer different level of subscriptions with different accessibilities



API Integrations

Offers API integrations to enterprises, ensuring privacy and security

Potential Competitors



OpenAI

Competing product:
ChatGPT (Plus and Teams)

- Not dedicated to EDA (no persistent memory of datasets)
- No visual interface or dashboard
- Limited interactivity beyond chat
- No team/collab or API support (yet)



MonkeyLearn

Competing product:
text-focused EDA + dashboard

- Only works with text data
- Limited scope (no numeric, time series, or advanced EDA)
- Lacks conversational interaction

EXPLORATORY

Exploratory.io

Visual GUI-based EDA and
modeling tool

- No AI/chat interface
- Desktop only (less cloud/SaaS flexibility)
- Can feel bloated for quick EDA

Future Prospects

Scalability: Can be scaled horizontally using Docker and Kubernetes, heavy tasks can be offloaded to separate workers

Impact Potentials: Streamline data analysing process, deliver more effective ML models, enhance businesses' descisions

