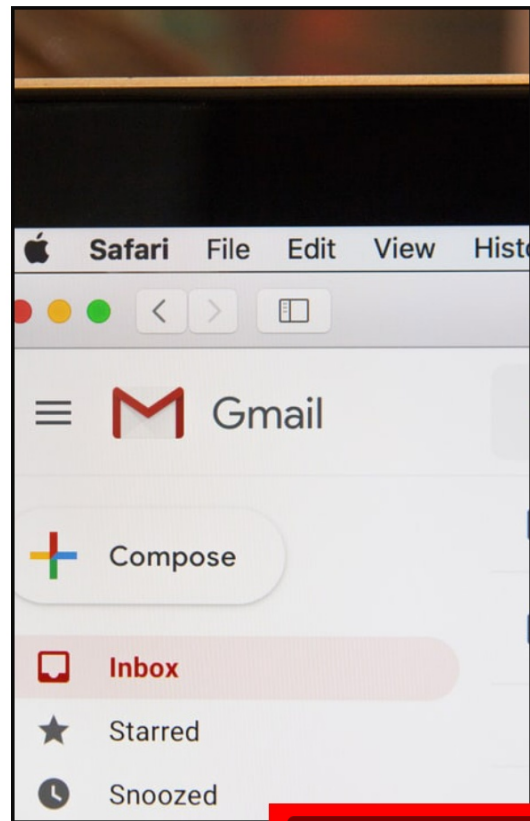


Enhancing Email Productivity with MailMind

azzedine idir aitsaid



The Problem

Information overload from
large volumes of emails.

Time-consuming to read
long email threads.

Difficulty extracting key
information quickly.

Need for quick answers
from email content without
manual searching.

- 1 MailMind is a Chrome extension that integrates AI capabilities directly into Gmail to streamline email management and information retrieval.
- 2 It empowers users to efficiently process emails by providing instant summaries.
- 3 Enables interactive chat with email content.
- 4 Offers an autonomous research agent for deeper insights.
- 5 Transforms your inbox into a powerful knowledge hub.

Introducing MailMind

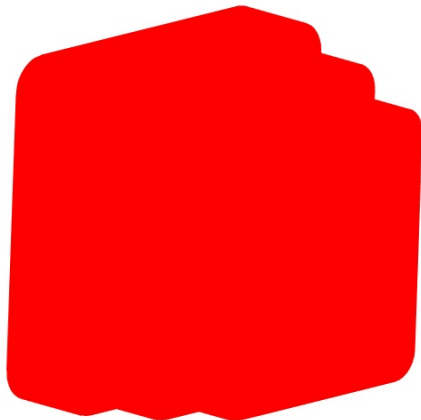
Key Feature 1: Email Summarization

Instant Summaries:

Select one or more emails and get a concise, AI-generated summary.

How it works:

Scrapes selected email content, sends to backend LLM for summarization.



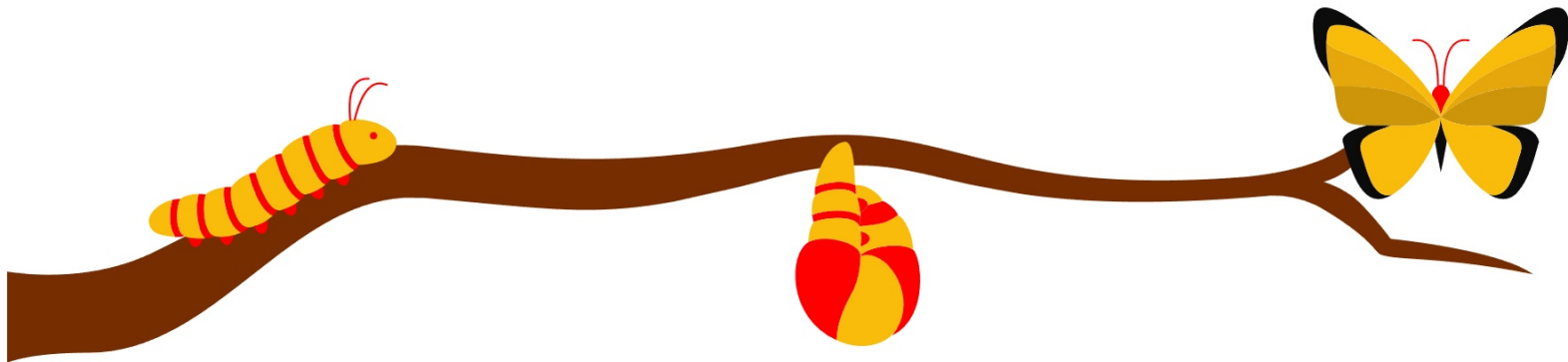
Benefits:

Save time by quickly grasping the essence of emails, prioritize important messages, and reduce cognitive load.

- 😊 Chat with Your Inbox: Engage in a conversational Q&A session with the content of your selected emails, optionally adding external context.
- 😊 Get specific answers from email content.
- 😊 Clarify details without re-reading.
- 😊 Combine email information with other knowledge.
- 😊 Selected emails and user questions sent to LLM for contextual answers and follow-up suggestions.

Key Feature 2: Interactive Chat with Emails

Key Feature 3: The AI Research Agent



Autonomous Research Agent

Ask complex research questions, and the agent will iteratively search within Gmail, read results, and synthesize a comprehensive report.

Workflow Steps

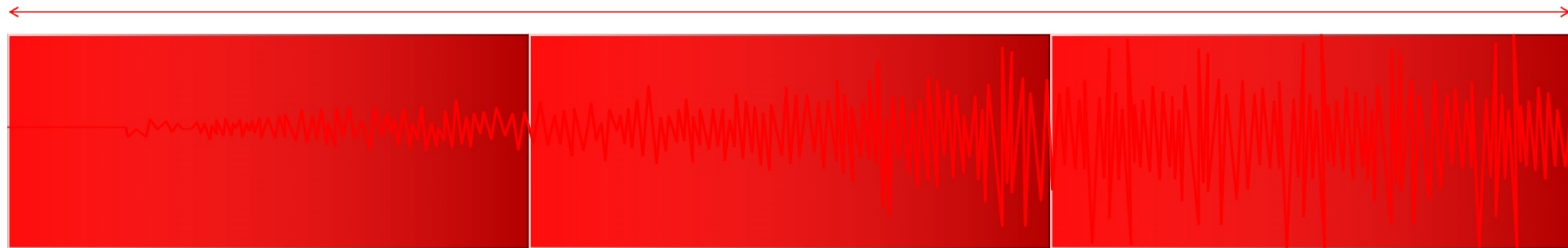
Steps include searching, reading, generating, and displaying reports derived from Gmail contents.

Benefits of the AI Research Agent

Automates information gathering, answers complex queries, and allows deep dives into specific email topics.

Technical Architecture

Under the Hood: How MailMind Works



Chrome Extension components include `manifest.json`, `popup.html`, `popup.js`, and `content.js`.

These files work together to facilitate user interaction with MailMind.

Python Flask Backend includes `app.py` for API endpoints and `llm.py` for LLM logic.

This backend handles requests and processes language model interactions.

LLM Provider is Groq API utilizing Llama 3.1 8B Instant.

This provider supports the language model capabilities of MailMind.

Technologies Used

Frontend

HTML

Description of a primary heading



CSS

Description of a primary heading



JavaScript

(Chrome Extension APIs, Fetch API)



Backend

Python

Description of a primary heading



Flask

Description of a primary heading



openai library

Description of a primary heading



dotenv

Description of a primary heading



json

Description of a primary heading



AI/LLM & Development Tools

Groq API

(Llama 3.1 8B Instant)



VS Code

Description of a primary heading



Git

Description of a primary heading



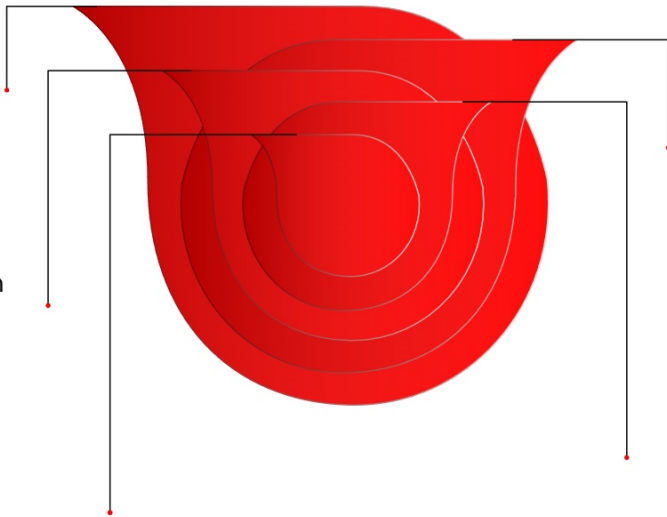
Future Enhancements

What's Next for MailMind?

Integration with other email clients
(Outlook, etc.).

User customization for summarization
styles.

Improved UI/UX for a more seamless
experience.



Advanced agent capabilities (e.g.,
drafting replies, scheduling).

Local LLM integration for privacy-
sensitive users.

**We value your feedback
and look forward to your
questions**

