



Generating Medical Assessments Using a Large Language Model (LLMs)





ALIM Team

- Raghad Ghawa
- Norah Al-asfour
- Feryal Al-Muairi
- Najla Al-harbi
- Shrouq Al-eissa





Outline

- Introduction
- Problem Statement
- Solution
- Goal & Objectives
- Business
- Future Points
- Workflow



Introduction

Save lives and time by saving appropriate medical assessments



V.S.





Problem Statement

Since the health care providers and hospitals face a large number of challenges such as the huge number of patients who have chronic diseases and they need to be treated and monitored frequently.

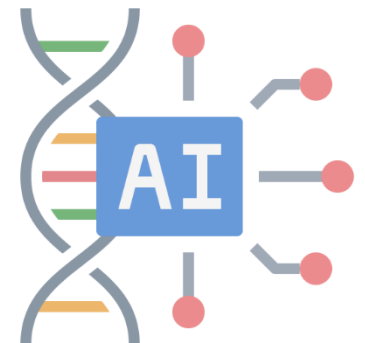




Solution

An online chat-bot bridges and help the gap and links doctors and the patients.

We aim to generate a large language model (LLMs) for creating medical assessments based on patient information described in electronic health record (EHR) notes.





Goal & Objectives

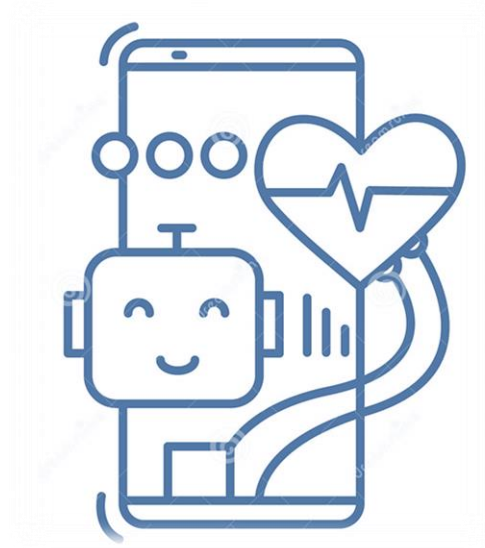
- Help the community





Goal & Objectives; *Cont,*

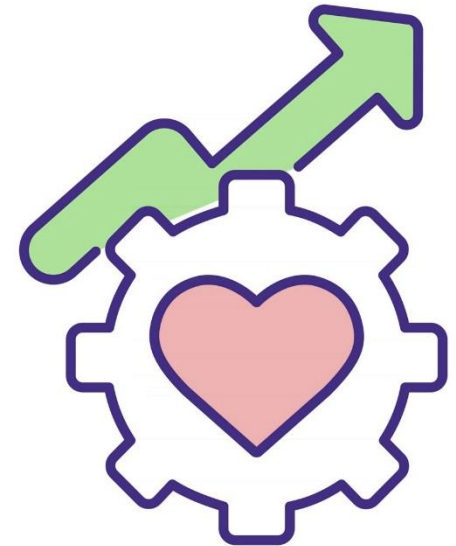
- The model we will build will significantly reduce the waiting time for getting appointments in hospitals.





Goal & Objectives; *Cont,*

- Enhance the efficiency of physicians' daily duties.





Goal & Objectives; *Cont,*

- To document patients' clinical information and share them among health care providers for patient care.





Business

- It is provided As service to hospitals.



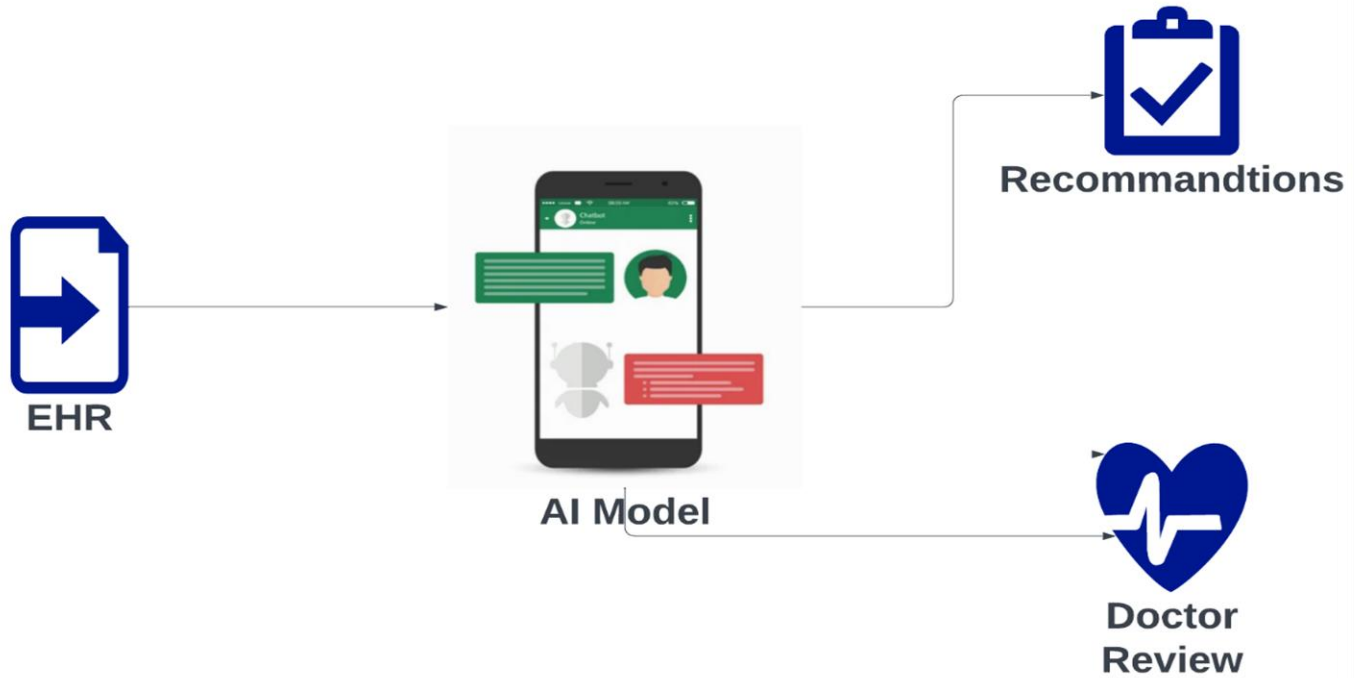


Future Points

- We will focus on collecting data from the EHR in order to train our models to a degree exceeding for example 98%.
- Connect the model with the EHR database to launch the first version of the application.
- Represent the analysis result (that the chatbot generate it) as a charts to give the patients insights



Workflow





Thank You For All.



GAIA
BY NEXTGRID

NN new native
group



SDAIA
الهيئة السعودية
لبيانات
والتقنية
Saudi Data & AI Authority



البرنامج الوطني
للتأهيل التقني للمعاملات
National Technology
Development Program