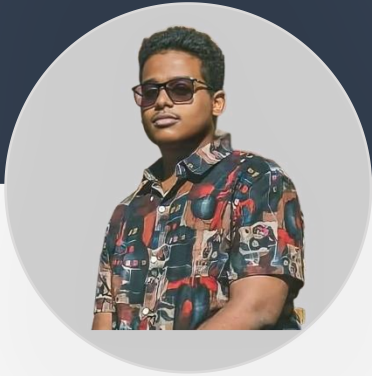


# THE BUILDERS



AMRO SHALABI



ZIAD SIDRAN



ALGHIFARY ALSHAYEB

3

2

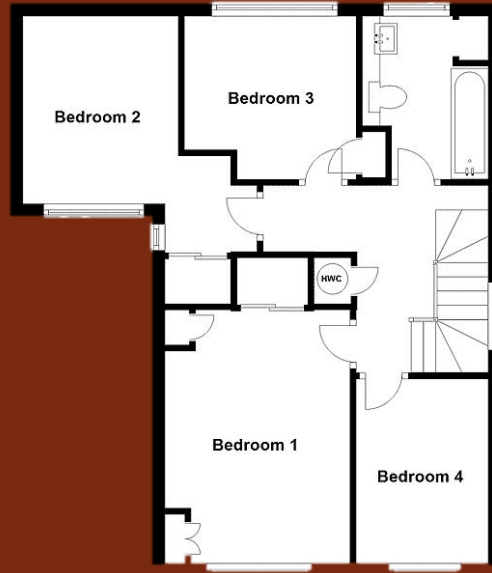
1

# PROBLEM STATEMENT

K

are

3



2

FIRST WEEK

CAD DRAWING

PROBLEM STATEMENT

1

K

are

3



SECOND WEEK

3D PROGRAMS  
SOFTWARE

2

PROBLEM STATEMENT

K  
N



3

2

# THIRD WEEK

## PROBLEM STATEMENT

# 3D VISUALIZATION

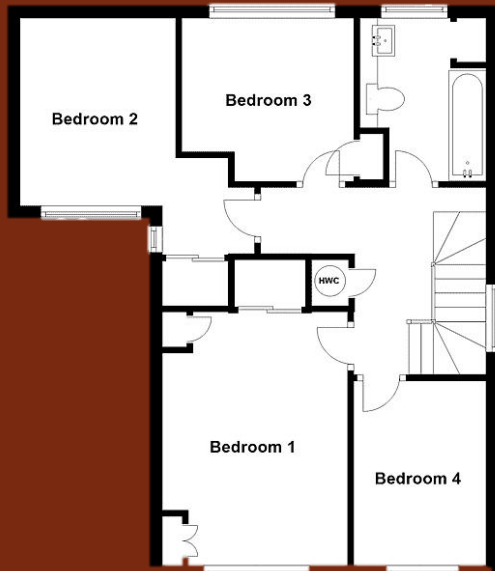
WHAT IF ?

2

1

# WHAT IF ?

# 1



# FIRST WEEK CAD DRAWING

# WHAT IF ?

## 2

# 30 SEC LATER

# 3D VISUALIZATION

## 1





A 3D-rendered yellow puzzle piece is the central focus, set against a dark grey background with a subtle maze pattern. The puzzle piece is slightly raised and casts a soft shadow. The text "THE SOLUTION" is centered over the piece in a white, serif font.

THE SOLUTION



WE EMPLOY STABLE DIFFUSION

TECHNOLOGY AND CONTROL

NET FOR PRECISE CAD

DRAWINGS, WHILE LEVERAGING

OUR PROPRIETARY DREAM

BOOTH MODEL TO CAPTURE

AND ENHANCE THE LOCAL

ARCHITECTURAL STYLE.





# FIRST

- WE CREATED DREAM BOOTH MODELS FOR THE LOCAL STYLE (SALMANI ARCHITECTURE STYLE )

+ Code + Text

**Colab Pro notebook from <https://github.com/TheLastBen/fast-stable-diffusion>**

*Alternatives : [RunPod](#) | [Paperspace](#)*

## Support

```
[ ] from google.colab import drive  
drive.mount('/content/gdrive')
```

Mounted at /content/gdrive

## ▶ Dependencies

[Show code](#)

```
Installing dependencies...  
Done, proceed
```

# SECOND

- AFTER TRAINING DOWNLOAD THE MODEL IN STABLE DIFFUSION

Stable Diffusion checkpoint

salmanistyle.ckpt [86b9e33bfc]



txt2img

img2img

Extras

PNG Info

Checkpoint Merger

Train

Settings

Extensions

Prompt (press Ctrl+Enter or Alt+Enter to generate)

Negative prompt (press Ctrl+Enter or Alt+Enter to generate)

Sampling method

Euler a

Sampling steps

20

Restore faces

Tiling

Hires. fix

Width

512

Batch count

1

Height

512

Batch size

1

CFG Scale

7

Seed

-1



Extra

# THIRD

- EXPLAIN THE STYLE IN TEXT + NEGATIVE PROMOTE NOTE STYLE KEY WORD IS (SALMANISTYLE)



(salmanisyle) house , (masterpiece),(high quality), best quality, real,(realistic), super detailed, (full detail),

(normal quality), (low quality), (worst quality), paintings, sketches.fog

# FOURTH

- SET UP THE PARAMETERS

Sampling method

Euler a

Sampling steps

Go

Restore faces

Tiling

Hires. fix

Width

017

Batch count

1

Height

017

↕

Batch size

1

CFG Scale

V

Seed

-1



Extra

ControlNet v1.1.179

ControlNet Unit 0

ControlNet Unit 1

Single Image

Batch

Image

# FIFTH

- INSERT YOUR CAD DROWNING IN CONTROL NET USING CANNY PRE-PROCESSING MODEL

Single Image

Batch

Image



Set the preprocessor to [invert] if your image has white background and black lines.



Enable

Low VRAM

Pixel Perfect

Allow Preview

Preprocessor

canny



Model

control\_sd15\_canny [fef5e48e]



Control Weight

1

Starting Control Step

.

Ending Control Step

1

Preprocessor Resolution

017

Canny Low Threshold

0.

# SIXTH

- ENTER GENERATE AND WAIT FOR THE RESULT

23/75

14/75

Generate



Styles



# DEMO RESULTS

---



Stable Diffusion checkpoint

salmanistyle.ckpt [86b9e33bfc]



- txt2img
- img2img
- Extras
- PNG Info
- Checkpoint Merger
- Train
- Settings
- Extensions

(salmanistyle) house , realistic 6/75

Negative prompt (press Ctrl+Enter or Alt+Enter to generate) 0/75

Generate



Styles  x

Sampling method Sampling steps

Euler a

- Restore faces
- Tiling
- Hires. fix

Width



Height



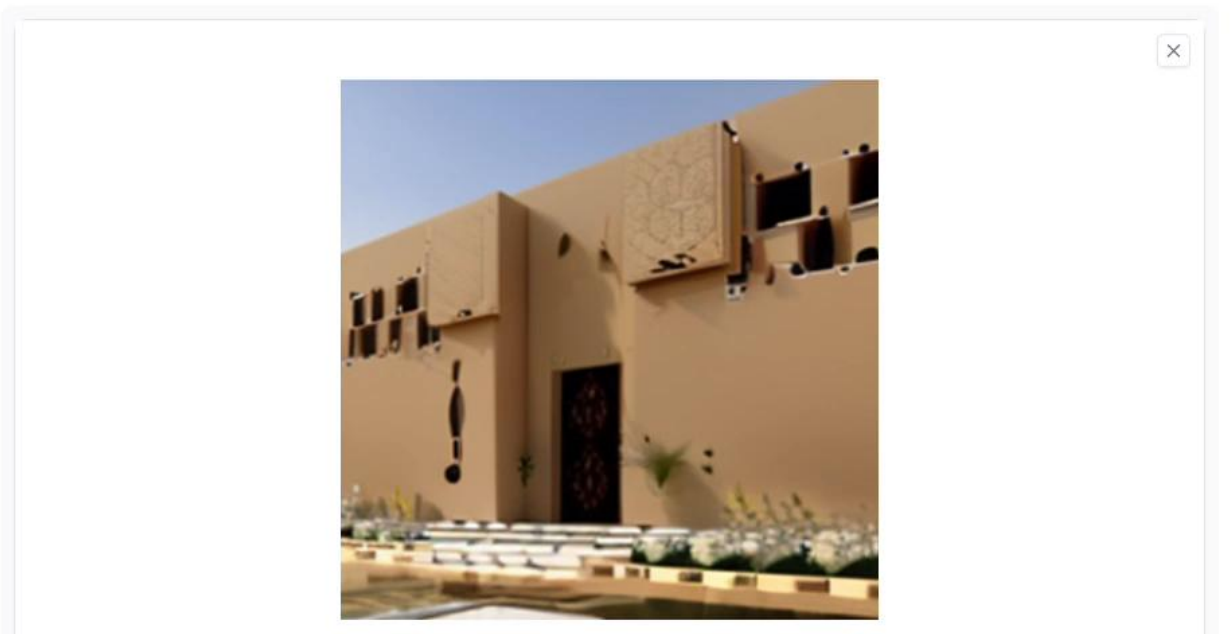
CFG Scale



Seed



ControlNet v1.1.179



# RESULTS



WHAT SETS US APART  
FROM THE  
COMPETITORS?

ENHANCED  
VISUAL  
REALISM

SIMPLIFIED  
DESIGN  
PROCESS



UNIQUE TIME-  
SAVING UP TO  
66%

SHOWCASES DIFFERENT  
STYLE FOR THE SAME  
BUILDING



SHOWCASES  
DIFFERENT STYLE  
FOR THE  
SAME BUILDING

---



# HOW CAN WE MAKE MONEY?





OFFER PROFESSIONAL SERVICES SUCH AS RENDERING  
SERVICES, ARCHITECTURAL VISUALIZATION RENDERS  
FOR ARCHITECTURE OFFICES



WE CAN OPERATE 75% CHEAPER THAN THE MARKET



A grayscale photograph of a city skyline, likely Dubai, viewed from across a body of water. The skyline features numerous skyscrapers of varying heights and architectural styles. The water in the foreground is calm with subtle ripples. The text "FUTURE DEVELOPMENTS" is overlaid in a large, white, serif font, centered horizontally across the middle of the image.

# FUTURE DEVELOPMENTS

PROVIDE VALUE-ADDED  
SERVICES SUCH AS  
CUSTOMIZATION, TRAINING,  
AND TECHNICAL SUPPORT

---

- WITH AN ESTIMATED SETUP TIME OF  
3 MONTHS, OUR SOLUTION CAN BE  
UP AND RUNNING, ENABLING  
ARCHITECTS AND DESIGNERS TO  
START LEVERAGING ITS BENEFITS  
WITHIN JUST 6 MONTHS





COLLABORATE WITH ARCHITECTURAL FIRMS TO REFINE THE STABLE  
DIFFUSION MODEL

CUSTOMIZE THE PLATFORM WITH ARCHITECTURAL STYLES ALIGN IT  
WITH THE REGIONAL DESIGN AESTHETICS