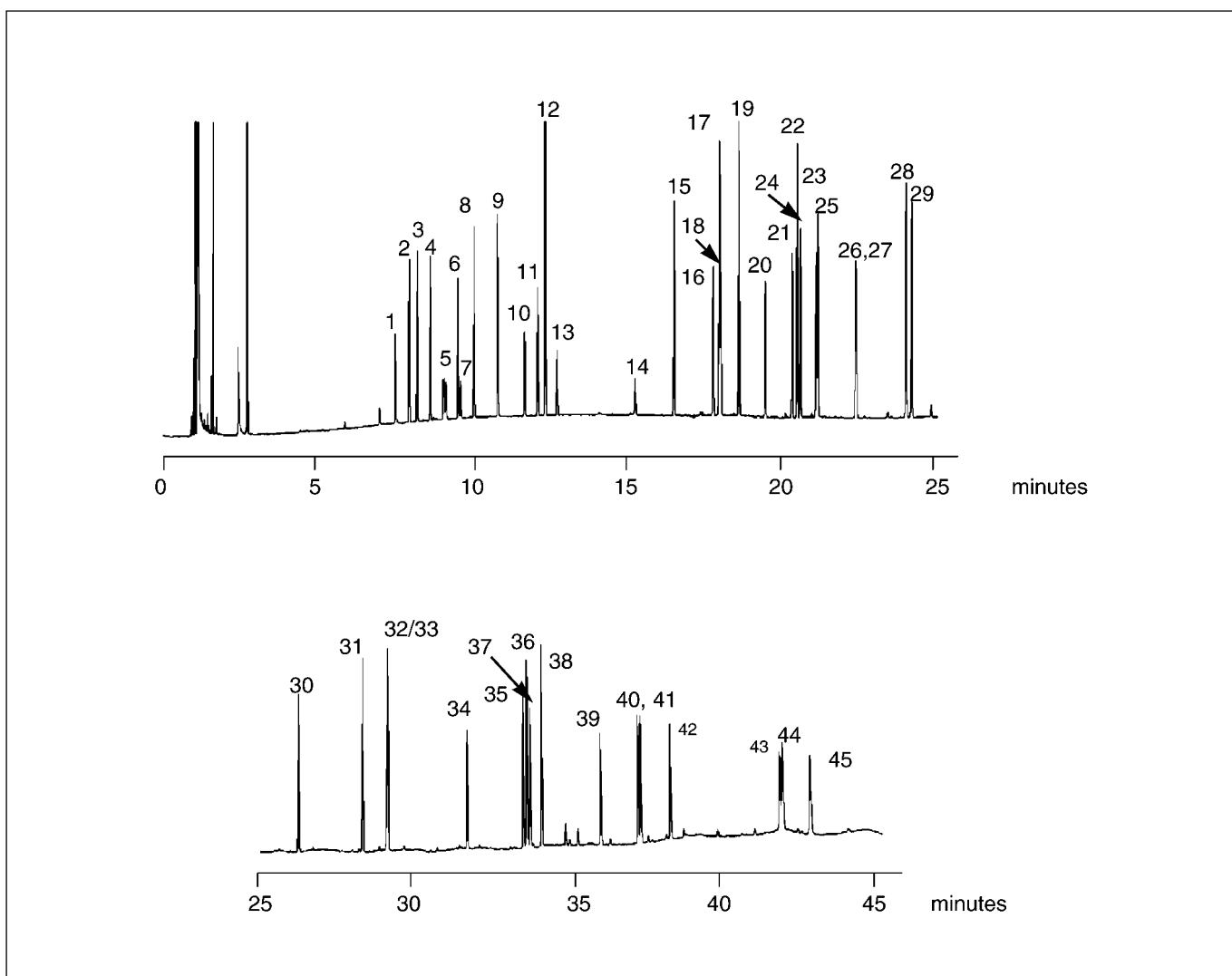


## Analysis of base neutrals (USEPA 625)

**BPX5**

Column part number	054113		
Phase	BPX5	Final temperature	310°C, 10 min
Column	25 m x 0.22 mm x 0.25 µm	Detector	FID
Initial temperature	50°C, 2 min	Injection mode	Split
Rate 1	7°C/min to 310°C	Carrier gas	H <sub>2</sub>



## Analysis of base neutrals USEPA 625

BPX5

**Components**

- |                                 |                               |                           |                                  |
|---------------------------------|-------------------------------|---------------------------|----------------------------------|
| 1. bis(2-chloroethyl)ether      | 13. Hexachlorobutadiene       | 25. Azobenzene            | 37. Bis (2-ethylhexyl) phthalate |
| 2. 1,3-Dichlorobenzene          | 14. Hexachlorocyclopentadiene | 26. 4-Bromophenyl ether   | 38. 3,3-Dichlorobenzidine        |
| 3. 1,4-Dichlorobenzene          | 15. 2-Chloronaphthalene       | 27. Hexachlorobezene      | 39. Di-n-Octyl phthalate         |
| 4. 1,2-Dichlorobenzene          | 16. Dimethyl phthalate        | 28. Phenanthrene          | 40. Benzo (b) fluoranthene       |
| 5. bis(2-chloroisopropyl)ether  | 17. Acenaphthylene            | 29. Anthracene            | 41. Benzo (k) fluoranthene       |
| 6. n-Nitroso-di-n-propylamine   | 18. 2,6-Dinitrotoluene        | 30. di-n-Butyl phthalate  | 42. Benzo (a) pyrene             |
| 7. Hexachloroethane             | 19. Acenaphthene              | 31. Fluoranthene          | 43. Indeno (1,2,3-c,d)pyrene     |
| 8. Nitrobenzene                 | 20. 2,4-Dinitrotoluene        | 32. Benzidine             | 44. Dibenzo (a,h) anthracene     |
| 9. Isophorone                   | 21. Diethyl Phthalate         | 33. Pyrene                | 45. Benzo (g,h,i) perylene       |
| 10. bis(2-chloromethoxy)methane | 22. Fluorene                  | 34. Butylbenzyl phthalate |                                  |
| 11. 1,2,4-Trichlorobenzene      | 23. 4-Chlorophenylether       | 35. Benzo(a)anthracene    |                                  |
| 12. Naphthalene                 | 24. N-Nitrosodiphenylamine    | 36. Chrysene              |                                  |

For more information visit [www.trajanscimed.com](http://www.trajanscimed.com) or contact [techsupport@trajanscimed.com](mailto:techsupport@trajanscimed.com)