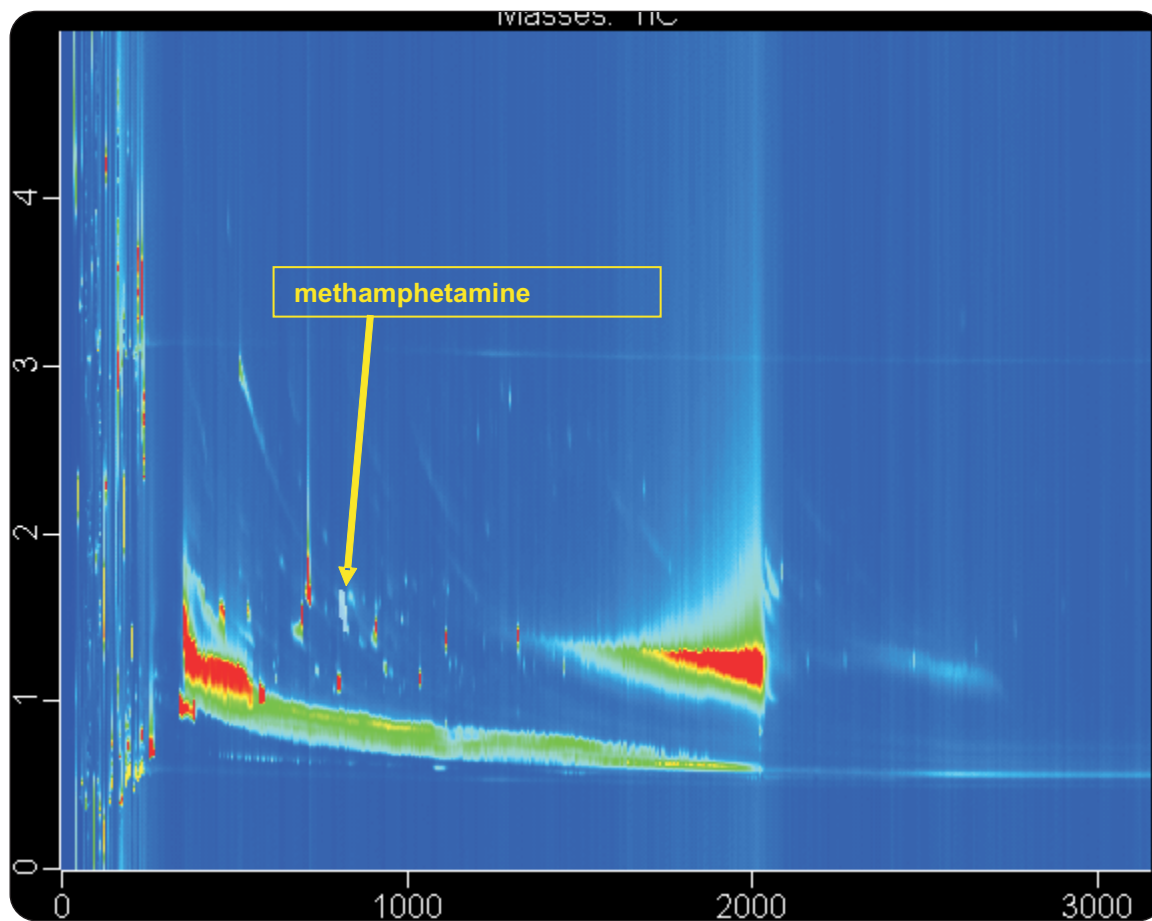


SPME-GCxGC-TOFMS of Drugs in Urine Toxicology Analysis Showing 31 picograms of Methamphetamine Detected

Life Science and Chemical Analysis Centre
LECO Corporation, Saint Joseph, Michigan USA



SPME-GCxGC-TOFMS analysis of underivatized urine samples showing 31 picograms of Methamphetamine.

Columns:

30 m x 0.25 mm x 0.25 μ m Rxi-5ms
1.5 m x 0.18 mm x 0.20 μ m Rtx-200

TOFMS:

40 to 550 m/z @ 200 spectra/s

For questions on this analysis
e-mail us at: life_science@leco.com

For a complete listing of snapshots
and application notes visit us on the
web at www.leco.com

