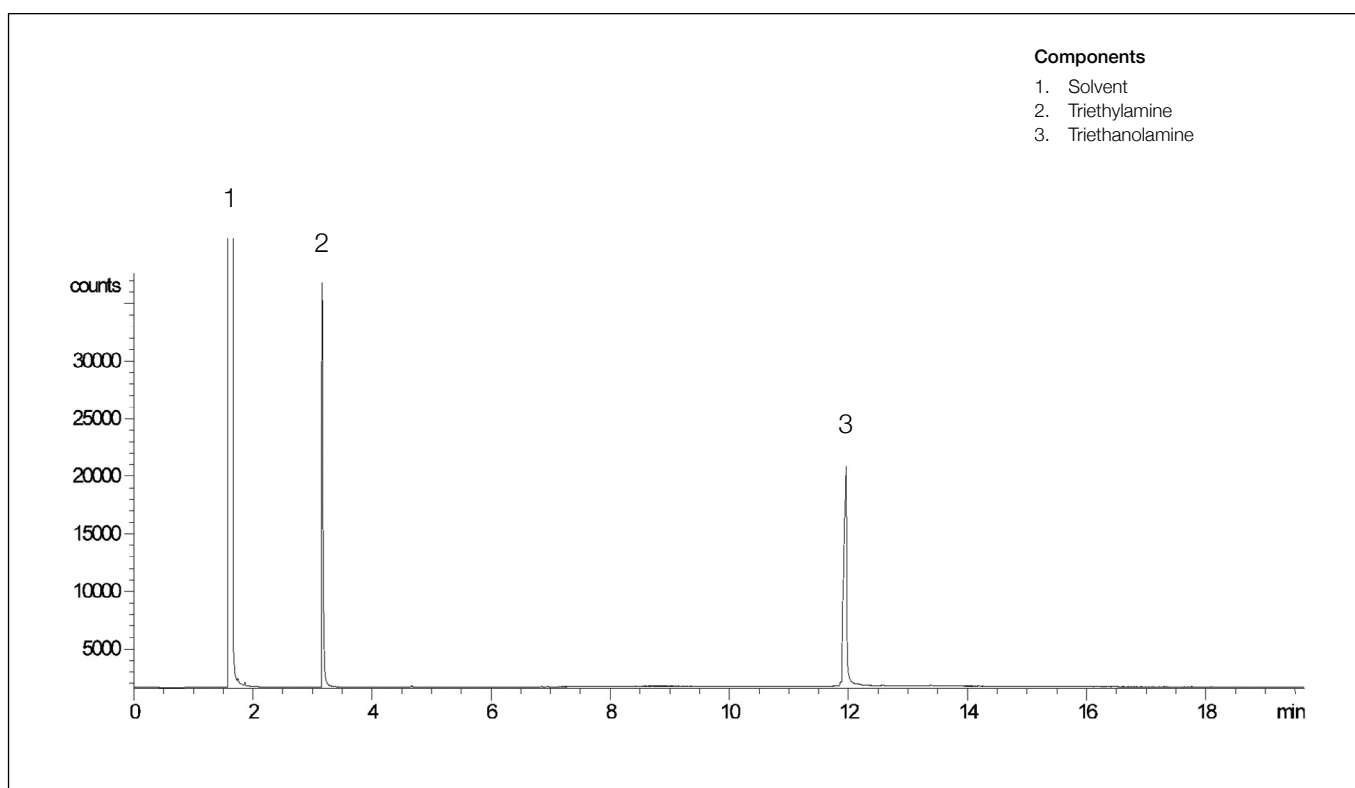


Analysis of triethylamine and triethanolamine

SolGel-1ms™

| | | | |
|---------------------------|-----------------------------|-------------------------|--------------------|
| Column part number | 054798 | | |
| Phase | SolGel-1ms™ | Carrier gas | He, 9.9 psi |
| Column | 30 m x 0.32 mm x 0.25 µm | Carrier gas flow | 2.2 mL/min |
| Amine mix | 10 ng/µL in dichloromethane | Constant flow | On |
| Initial temperature | 40°C, 5.0 min | Average linear velocity | 35 cm/sec at 100°C |
| Rate | 20°C/min | Injection mode | Split (50:1) |
| Final temperature | 200°C, 7 min | Injection volume | 0.3 µL |
| Detector | FID, 300°C | Injection temperature | 250°C |



For more information visit www.trajanscimed.com or contact techsupport@trajanscimed.com