

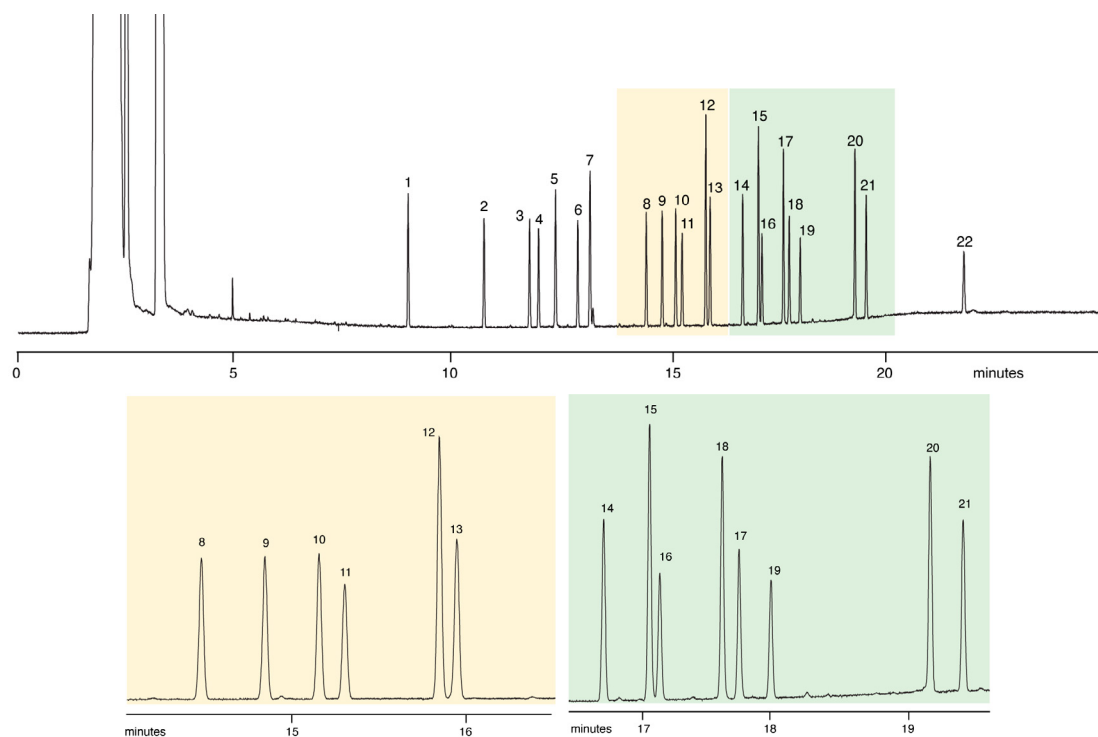
Analysis of organochlorine pesticides (USEPA 8081)

BPX50

Column part number	0541751		
Phase	BPX50	Detector	FID at 310°C
Column	30 m x 0.25 mm x 0.25 µm	Injection mode	Splitless, 0.5 mm
Initial temperature	40°C, 1 min	Carrier gas	He, 14.1 psi, 30 cm/sec at 40°C
Rate 1	30°C/min to 190°C, 3 min	Injection volume	1 µL
Rate 2	10°C/min to 300°C	Liner type	Single taper
Final temperature	300°C, 5 min		

Components

- | | | | |
|---|-----------------------|---------------------|------------------------|
| 1. 2, 4, 5, 6 - tetrachloro - meta - xylene | 7. Aldrin | 13. Dieldrin | 19. Endosulfan sulfate |
| 2. α - BHC | 8. Heptachlorepoxy | 14. Endrin | 20. Methoxychlor |
| 3. β - BHC | 9. gamma - chlordane | 15. p, p' - DDD | 21. Endrin ketone |
| 4. γ - BHC | 10. alpha - chlordane | 16. Endosulfan B | 22. Decachlorobiphenyl |
| 5. δ - BHC | 11. Endosulfan A | 17. Endrin aldehyde | |
| 6. Heptachlor | 12. p, p' - DDE | 18. p, p' - DDT | |



Sample description: 8081 mix with internal standards 10 mg/L, 5 ng per component on column

For more information visit www.trajanscimed.com or contact techsupport@trajanscimed.com