

# Application Data Sheet

## No. 185

### System Gas Chromatograph

## Hydrocarbons in Sulfolane Analysis Nexis GC-2030IMP GC-2014IMP

This method is for determining hydrocarbons in Sulfolane or similar composites as described in below compound table. It requires the use of a dedicated gas chromatographic system which is configured with an automatic liquid injector.

#### Analyzer Information

##### System Configuration:

One SPL injector / one capillary column / one FID detector

##### Sample Information:

Determining low concentrations of hydrocarbons in lean solvent sulfolane. benzene, toluene, C8 aromatics composites, and C9 aromatics composites are determined.

##### Methods met:

UOP-831

#### Concentration Range:

No.	Name of Compound	Concentration Range	
		Low Conc.	High Conc.
1	Benzene	1.0 ppm	100 ppm
2	Toluene	1.0 ppm	100 ppm
3	C8 Aromatics	1.0 ppm	100 ppm
4	C9+	1.0 ppm	100 ppm

Detection limits may vary depending on the sample. Please contact us for more consultation.

#### System Features

- Single FID channel
- Good repeatability

#### Typical Chromatograms

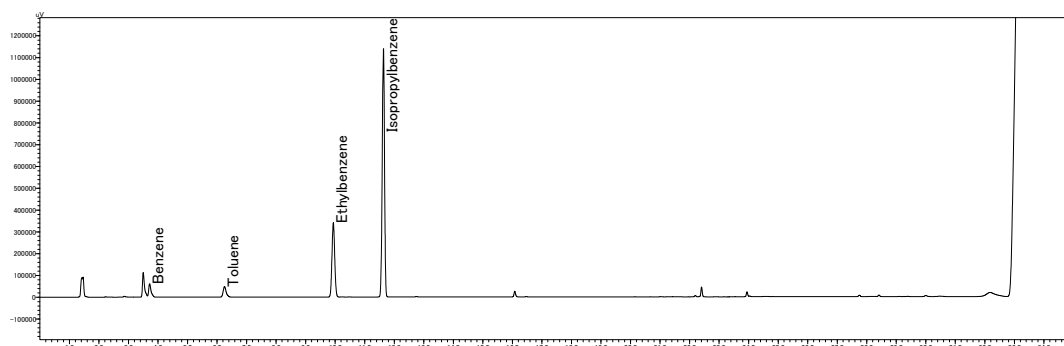


Fig. 1 Chromatogram of FID