

# Why operate on borrowed time?

Agilent technology refresh program  
for pharmaceutical labs



Your Agilent 6890 GC and legacy GC/MSD systems continue to deliver the results that helped you succeed in the past. However, it is risky to rely on aging equipment to meet stringent regulations and production requirements.

### Redefine what is possible in your laboratory

New Agilent GC systems build upon features developed for our trusted 6890 and legacy GC/MSD systems. They provide the sensitivity, reproducibility, and cost-efficient operations that were not possible 20 years ago.

- The 7820A GC delivers Agilent reliability for common headspace applications
- The 7890B GC produces reliable data today, and for decades to come
- The Intuvo 9000 GC is 25% more efficient and takes less than half the bench space required for traditional GCs
- GC and GC/MSD analyzers have methodology for analysis of residual solvents
- Agilent chromatography data systems—OpenLAB 2 CDS gives you answers you can trust

GC and GC/MS systems from Agilent will allow you to meet and exceed the regulations associated with residual solvents, leachables, and extractables.



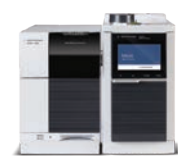
Agilent Intuvo 9000 GC



Agilent 7890B GC



Agilent 7820A GC



Agilent 5977B GC/MSD



Agilent 7890B GC and 7697A Headspace



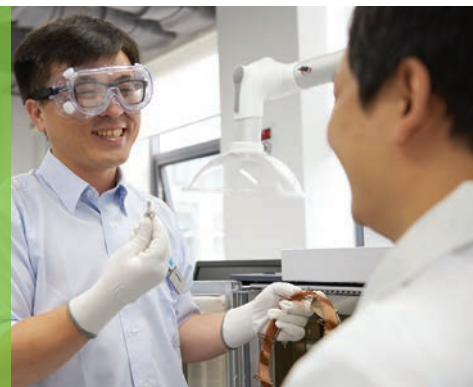
### New pharmaceutical application notes

See how replacing your older instruments with new GC and GC/MSD innovations helps your lab.

View application notes now: [www.agilent.com/chem/borrowedtime](http://www.agilent.com/chem/borrowedtime)

# Resolve your search for productivity

Stop struggling unnecessarily to meet regulatory  
and reporting requirements



For more than 50 years, Agilent has been committed to GC innovations, exceeding long-term performance expectations.



## Agilent 7820A GC

### The choice for routine analysis

A decreasing capital budget shouldn't mean living with the increased risk of aging equipment. The 7820A—with either liquid or headspace injections—delivers affordable, long-term innovation. And it's backed by the Agilent 10-year value promise guarantee.



## Agilent 7890B GC

### High performance with low operational costs

Close, regular monitoring of operating budgets means the difference between a profitable analysis or a loss for pharmaceutical laboratories. The cost-saving features available in the 7890B GC, together with its reliability and sensitivity, eliminate your daily struggle with old equipment. Additional features include:

- An inert flowpath that minimizes the loss of low-level active compounds
- Retention time locking, to ensure same retention times for the same methods on any GC
- Helium Conservation Module with Sleep/Wake mode that decreases helium use and cost
- Auto calibrating hydrogen sensor for safer, less expensive use of hydrogen carrier gas



**Increase  
productivity  
up to 25%** by  
replacing one  
6890 GC with  
one Intuvo GC

## Agilent Intuvo 9000 GC

### The business efficiency you've been dreaming of

Eliminate productivity and training obstacles in a completely new way. Intuvo requires half as much bench space—and uses only half the power—of aging GC systems. Its groundbreaking features include:

- No nuts or ferrules, so anyone can change the column in less than a minute
- On-board diagnostics, making anyone an expert
- No-clip columns that maintain their length, eliminating retention time update
- The perfect GC for use with 5977B, 7000D, and 7010B mass spectrometer systems



## Agilent 5977B GC/MSD

### The newest version of the most successful GC/MS systems

The 5977B High Efficiency Source (HES) GC/MSD improves sensitivity 10X, and decreases sample preparation time by eliminating concentration steps. It also increases the length of time between cleaning.

## Move your lab ahead with Agilent GC innovations

### An integrated approach to inertness

Flow path inertness is the cutting edge of GC, which is why Agilent has integrated inert flow path solutions into our next-generation GC systems. The Agilent Inert Flow Path ensures reliable, consistent inertness from injector to detector, decreasing analyte adsorption for lower LODs and better s/n response. That means you achieve the parts-per-billion—or parts-per trillion—detection levels that today's pharmaceutical analysis demands.

### Increased sample throughput with the Agilent Intuvo GC System

The Intuvo system lets you get more done in less time at the lowest cost per sample—without having to change your existing methods. It features fast oven cool-down, new backflush capabilities, and advanced automation.

### Integrated system intelligence

Early maintenance feedback allows you to eliminate unexpected downtime. This improved communication between the GC and the mass selective detector cuts venting time by up to 40%, and protects the system from damage by stopping the flow of carrier gas during shutdown events.

### Improved dependability

The Agilent J&W Ultra Inert GC column family pushes industry standards for consistent column inertness and exceptionally low column bleed, resulting in lower detection limits and more accurate data for difficult analytes.

### Expanded chromatographic capabilities

Backflush, flow splitters, GCxGC, Dean switches, and purged unions are all provided by Agilent capillary flow technology.



For further information about Agilent GC and GC/MSD solutions, go to: [www.agilent.com/chem/borrowedtime](http://www.agilent.com/chem/borrowedtime)



## Take your data, and your data system, forward

Agilent has taken a step forward with state-of-the-art software. Our OpenLAB chromatography data systems are compatible with your existing methods and data, enabling you to take full advantage of the advanced features built into our chromatographs. What's more, our reporting software is drag-and-drop simple and provides time-saving steps in your analysis, interpretation, and reporting workflows.

Learn more

[www.agilent.com/chem/borrowedtime](http://www.agilent.com/chem/borrowedtime)

Contact your Agilent sales representative

[www.agilent.com/chem/contactus](http://www.agilent.com/chem/contactus)

U.S. and Canada

**1-800-227-9770**

[agilent\\_inquiries@agilent.com](mailto:agilent_inquiries@agilent.com)

Europe

[info\\_agilent@agilent.com](mailto:info_agilent@agilent.com)

Asia Pacific

[inquiry\\_lsca@agilent.com](mailto:inquiry_lsca@agilent.com)



From Insight to Outcome

## Agilent CrossLab Services: Maximize uptime with end-to-end support

You can trust Agilent CrossLab service experts to deliver valuable insights and keep your instruments running at top performance. Our industry-leading services—tailored to meet your needs—include technology refresh services, application consulting, repairs, preventive maintenance, compliance verification, and education. Ask us how we can support your laboratory today.

For Research Use Only. Not for use in diagnostic procedures.  
This information is subject to change without notice.

© Agilent Technologies, Inc. 2018  
Published in the USA, February 8, 2018  
5991-8923EN

