

TheReporter

Reprinted from Volume 14, No. 2, 1995

T295012

© 1999 Sigma-Aldrich Co.

For more information, or current prices, contact your nearest Supelco subsidiary listed below. To obtain further contact information, visit our website (www.sigma-aldrich.com), see the Supelco catalog, or contact Supelco, Bellefonte, PA 16823-0048 USA.

ARGENTINA • Sigma-Aldrich de Argentina, S.A. • Av. Pueyrredon 2446/50 • Piso 5-B • Buenos Aires 1119
AUSTRALIA • Sigma-Aldrich Pty. Ltd. • Unit #2, 14 Anella Avenue • Castle Hill NSW 2154
AUSTRIA • Sigma-Aldrich Handels GmbH • Hebbelplatz 7 • A-1110 Wien
BELGIUM • Sigma-Aldrich N.V./S.A. • K. Cardijnplein 8 • B-2880 Bornem
BRAZIL • Sigma-Aldrich Quimica Brasil Ltda. • Rua Sabara, 566-Conj. 53 • 01239-010 São Paulo, SP
CANADA • Sigma-Aldrich Canada, Ltd. • 2149 Winston Park Dr., Oakville, ON L6H 6J8
CZECH REPUBLIC • Sigma-Aldrich s.r.o. • Pobrezni 46 • 186 21 Praha 8
DENMARK • Sigma-Aldrich Denmark A/S • Vejlegaardsvej 65B • DK-2665 Vallengbaek Strand
FINLAND • Sigma-Aldrich Finland/YA-Kemia Oy • Teerisuonkuja 4 • FIN-00700 Helsinki
FRANCE • Sigma-Aldrich Chimie • Chromatographie Supelco • L'Isle d'Abeau Chesnes - B.P. 701 • 38297 Saint-Quentin Fallavier Cedex
GERMANY • Sigma-Aldrich Chemie GmbH • Geschäftsbereich Supelco • Grünwalder Weg 30 • D-82041 Deisenhofen
GREECE • Sigma-Aldrich (o.m.) Ltd. • 72 Argonafton Str. • 16346 Ilioupoli, Athens
HUNGARY • Sigma-Aldrich Kft. • Nagy Diófa u. 7., IV fl. • H-1067 Budapest
INDIA • Sigma-Aldrich Co. • Survey No. 31/1, Sitharamapalaya • Mahadevapura P.O. • Bangalore 560 048
IRELAND • Sigma-Aldrich Ireland Ltd. • Airton Road • Tallaght • Dublin 24
ISRAEL • Sigma Israel Chemicals Ltd. • Park Rabin • Rohovot 76100
ITALY • Sigma-Aldrich s.r.l. • Via Gallarate, 154 • 20151 Milano
JAPAN • Sigma-Aldrich Japan K.K. • Division Supelco • JL Nihonbashi Building • 1-10-15 Nihonbashi Horidome-cho, Chuo-ku • Tokyo 103
KOREA • Sigma-Aldrich Korea • Samhan Camus Annex, 10th Floor • 17-26 Yoido-dong, Yungdeungpo-ku • Seoul
MALAYSIA • Sigma-Aldrich (M) Sdn. Bhd. • 9-2, Jalan 2/128, Taman Gembira • Off Jalan Kuchai Lama • 58200 Kuala Lumpur • Selangor
MEXICO • Sigma-Aldrich Quimica S.A. de C.V. • Calle 6 North No. 107 • Parque Industrial Toluca 2000 • 50200 Toluca
NETHERLANDS • Sigma-Aldrich Chemie BV • Postbus 27 • 3330 AA Zwijndrecht
NORWAY • Sigma-Aldrich Norway • Sandakerveien 102 • N-0483 Oslo
POLAND • Sigma-Aldrich Sp. z o.o. • Szelagowska 30 • 61-626 Poznań
PORTUGAL • Sigma-Aldrich Quimica, S.A. • P.O. Box 131 • Sintra 2710
RUSSIA • Sigma-Aldrich Russia • TOO Techmedbiochem • Makarenko Str. 2/21 • Building 1, Flat 22 • Moscow 103062
SINGAPORE • Sigma-Aldrich Pte. Ltd. • 102E Pasir Panjang Road • #08-01 Citilink Warehouse • Singapore 118529
SOUTH AFRICA • Sigma-Aldrich (pty) Ltd. • CNR Kelly & Ackerman Streets • Southern Life Industrial Park Unit • Unit 16/17 • Jet Park 1459
SPAIN • Sigma-Aldrich Quimica, S.A. • Apt. Correos 161 • 28100 Alcobendas, Madrid
SWEDEN • Sigma-Aldrich Sweden AB • Solkraftsvägen 14C • 135 70 Stockholm
SWITZERLAND • Supelco Switzerland • Industriestrasse 25 • P.O. Box 260 • CH-9471 Buchs
UNITED KINGDOM • Sigma-Aldrich Company Ltd. • Supelco UK • Fancy Road, Poole • Dorset BH12 4QH
UNITED STATES • Supelco • Supelco Park • Bellefonte, PA 16823-0048 • Phone 800-247-6628 or 814-359-3441 • Fax 800-447-3044 or 814-359-3044 • email:supelco@sial.com

H

This article is archived from a past issue of The Supelco Reporter. Information in the article was appropriate at the time of publication, but product specifications, catalog numbers, and availability may have changed over time.

If you have questions about applying methodology described in this article to a current application, please contact our technical service chemists.



Supelco is a member of the Sigma-Aldrich family. Supelco products are sold through Sigma-Aldrich, Inc. Sigma-Aldrich warrants that its products conform to the information contained in this and other Sigma-Aldrich publications. Purchaser must determine the suitability of the product for a particular use. Additional terms and conditions may apply. Please see the reverse side of the invoice or packing slip.

Organic Volatile Impurities in Pharmaceutical Products: Selectivity of Capillary GC Columns

C. Woolley, J. Murnyack, C. Kepler

Methods for separating and quantifying organic volatile impurities – residual solvents potentially present in pharmaceutical preparations – are described by the US Pharmacopoeia in USP <467>. The two polysiloxane-phase columns described in USP <467> (e.g., SPB-5 and OVI-G43) effectively separate the five regulated OVIs plus many other residual solvents. A column with a bonded polyethylene glycol stationary phase (SUPELCOWAX 10) offers a different elution pattern for separating these analytes.

In the process of preparing a pharmaceutical product, residual organic solvent potentially can be retained in the final preparation. In the United States, most pharmaceutical products must be examined to confirm the absence or very limited presence of benzene, chloroform, 1,4-dioxane, methylene chloride, or trichloroethylene. These solvents, referred to as organic volatile impurities (OVIs), have been determined to be toxic. Methods for separating and quantifying the five regulated OVIs are described by the US Pharmacopoeia in USP <467> (1). Two additional solvents, acetone and pyridine, are proposed for regulation by the European Pharmacopoeia. In addition to the regulated OVIs, other residual organic solvents from the final recrystallization step (e.g., acetone, ethanol, isopropanol) also could be present in a pharmaceutical product.

We compared the two polysiloxane-phase columns listed in USP <467> (G27 and G43), plus a polyethylene glycol-phase column (Table 1), for separating the five regulated OVIs and other common residual solvents. As expected, the elution order of these solvents varies for each stationary phase, according to differences in chemical and physical properties of the solvents (boiling points,

Table 1. Columns Used to Monitor OVIs

Column Type*	Bonded Phase	Phase Thickness
SPB™-5 (USP G27)	5% phenyl 95% methylpolysiloxane	5.0µm
OVI-G43 (USP G43)	6% cyanopropylphenyl 94% dimethylpolysiloxane	3.0µm
SUPELCOWAX™10 (USP G16)	polyethylene glycol	1.0µm

*All 30m x 0.53mm ID.

polarizability, dipole moments, number of hydrogen donor and hydrogen acceptor sites) and consequent strengths of the stationary phase-analyte interactions (Tables 2 and 3). The type and strength of each temporary interaction determines the amount of time the analyte is retained on the column.

Figure A shows typical elution orders for 42 common solvents from the three columns. The elution order was similar, but not identical, for the two polysiloxane stationary phases, SPB-5 and OVI-G43. The polyethylene glycol phase, SUPELCOWAX 10, provided the largest number of changes in elution order and resolution (Table 4 and Figure A), making it the best choice when you want to use a second column to confirm results.

Table 2. Stationary Phase–Analyte Interactions

Interaction Type	Effect on Selectivity
Dispersive	elution by boiling point
π - π	elution by number of π -bonds
Dipole-induced dipole	elution by polarizability elution by dipole moment
Dipole-dipole	elution by dipole moment
Hydrogen bonding	elution by number of H-bond donor and/or acceptor sites

Table 3. Stationary Phase–Residual Solvent Interactions

Column	Type of Interaction
SPB-5	dispersive dipole-induced dipole π - π
OVI-G43	dispersive dipole-induced dipole dipole-dipole π - π
SUPELCOWAX 10	dispersive H-bonding dipole-dipole

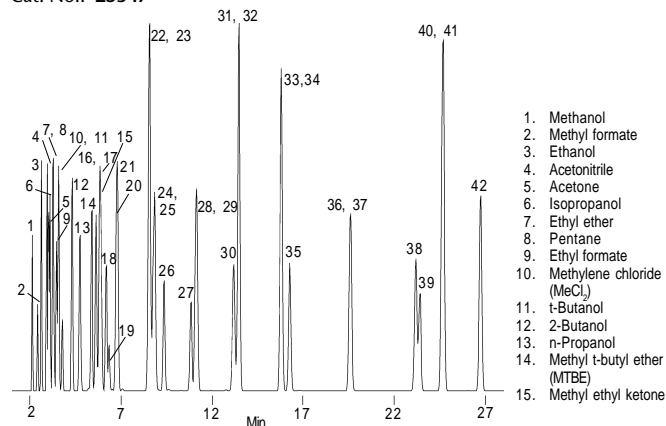
These results indicate that, as expected, either the SPB-5 or OVI-G43 column will enable you to effectively monitor any or all of the seven OVIs specified in USP <467> or by the European Pharmacopoeia. Among 42 common solvents, however, there are several coelutions and partial resolutions on either of these columns, or on a SUPELCOWAX 10 column.

Figure A. Common Solvents Used in Pharmaceutical Processing

Col. Temp.: 40°C (5 min) to 200°C at 2°C/min
 Carrier: helium, 35cm/sec (at 40°C)
 Det.: FID, 250°C
 Inj.: 0.2µL of neat solvents mix
 split (100:1), 250°C

SPB-5 Column

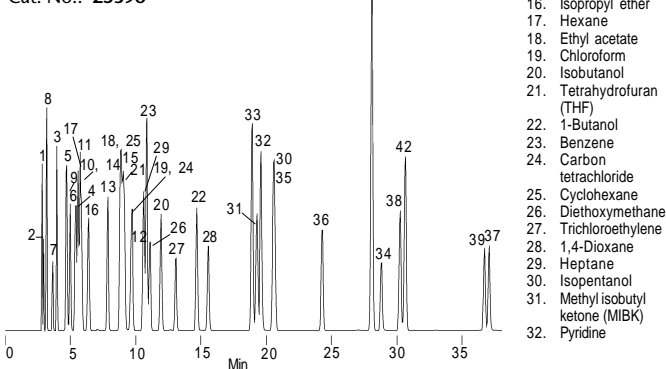
30m x 0.53mm ID x 5.0µm film
 Cat. No.: 25347



1. Methanol
2. Methyl formate
3. Ethanol
4. Acetonitrile
5. Acetone
6. Isopropanol
7. Ethyl ether
8. Pentane
9. Ethyl formate
10. Methylene chloride (MeCl₂)
11. t-Butanol
12. 2-Butanol
13. n-Propanol
14. Methyl t-butyl ether (MTBE)
15. Methyl ethyl ketone

OVI-G43 Column

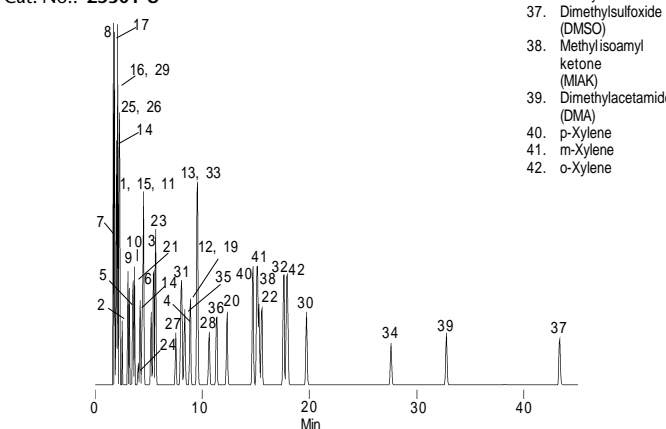
30m x 0.53mm ID x 3.0µm film
 Cat. No.: 25396



16. (MEK)
17. Isopropyl ether
18. Hexane
19. Ethyl acetate
20. Chloroform
21. Isobutanol
22. Tetrahydrofuran (THF)
23. 1-Butanol
24. Benzene
25. Carbon tetrachloride
26. Cyclohexane
27. Diethoxymethane
28. Trichloroethylene
29. 1,4-Dioxane
30. Heptane
31. Isopentanol
32. Methyl isobutyl ketone (MIBK)
33. Pyridine

SUPELLOWAX 10 Column

30m x 0.53mm ID x 1.0µm film
 Cat. No.: 25301-U



33. Toluene
34. Dimethylformamide
35. Isobutyl acetate
36. n-Butyl acetate
37. Dimethylsulfoxide (DMSO)
38. Methylisoamyl ketone (MIAK)
39. Dimethylacetamide (DMA)
40. p-Xylene
41. m-Xylene
42. o-Xylene

794-0611, 0613, 0612

The most suitable column for a particular analysis can be selected by studying Table 4 and Figure A. Alternatively, a dual-column analysis on an OVI-G43 column and a SUPELLOWAX 10 column will resolve all 42 solvents and provide valuable confirmational information.

Table 4. Elution Order for 23 Common Residual Solvents

SPB-5	OVI-G43	SUPELLOWAX 10
Methanol	Methanol	Hexane
Ethanol	Ethyl ether	Ethyl ether
Acetonitrile**	Ethanol	MTBE
Acetone	Acetone	Heptane
Isopropanol	Isopropanol	Acetone
Ethyl ether	MeCl ₂ *	MeCl ₂ *
MeCl ₂ *	MTBE	Tetrahydrofuran
t-Butanol	Hexane	Ethyl acetate
2-Butanol	t-Butanol	MEK
MTBE	Acetonitrile**	Methanol
MEK	Ethyl acetate	t-Butanol
Hexane	MEK	Isopropanol
Ethyl acetate	Tetrahydrofuran	Ethanol
Chloroform*	Chloroform*	Benzene*
Tetrahydrofuran	2-Butanol	
Trichloroethylene*		
1-Butanol	Heptane	Acetonitrile**
Benzene*	Benzene*	MIBK
Trichloroethylene*	Trichloroethylene*	2-Butanol
1,4-Dioxane*	1-Butanol	Chloroform*
Heptane	1,4-Dioxane*	Toluene
MIBK	Toluene	1,4-Dioxane*
Pyridine**	MIBK	1-Butanol
Toluene	Pyridine**	Pyridine**

Column Polarity: Mean value for 5 McReynolds constants = 62 (SPB-5), 101 (OVI-G43), 437 (SUPELLOWAX 10)

*OVIs, regulated by USP <467>

**Proposed for regulation in European Pharmacopoeia method

Shading designates coelution

Ordering Information:**Capillary GC Columns**

SPB-5 (USP G27)	
30m x 0.53mm ID, 5.0µm film	25347
OVI-G43 (USP G43)	
30m x 0.53mm ID, 3.0µm film	25396
SUPELLOWAX 10 (USP G16)	
30m x 0.53mm ID, 1.0µm film	25301-U

Reference

1. USP 23 – NF18 The United States Pharmacopoeia - The National Formulary, USP Convention, Rockville, Maryland, 1995, USP <467>, p1746-1748.

Reference not available from Supelco.

SPB and SUPELLOWAX are trademarks of Sigma-Aldrich Co.

