

TheReporter

Reprinted from Volume 14, No. 4, 1995

T295014

© 1999 Sigma-Aldrich Co.

For more information, or current prices, contact your nearest Supelco subsidiary listed below. To obtain further contact information, visit our website (www.sigma-aldrich.com), see the Supelco catalog, or contact Supelco, Bellefonte, PA 16823-0048 USA.

ARGENTINA • Sigma-Aldrich de Argentina, S.A. • Av. Pueyrredon 2446/50 • Piso 5-B • Buenos Aires 1119
AUSTRALIA • Sigma-Aldrich Pty. Ltd. • Unit #2, 14 Anella Avenue • Castle Hill NSW 2154
AUSTRIA • Sigma-Aldrich Handels GmbH • Hebbelplatz 7 • A-1110 Wien
BELGIUM • Sigma-Aldrich N.V./S.A. • K. Cardijnplein 8 • B-2880 Bornem
BRAZIL • Sigma-Aldrich Quimica Brasil Ltda. • Rua Sabara, 566-Conj. 53 • 01239-010 São Paulo, SP
CANADA • Sigma-Aldrich Canada, Ltd. • 2149 Winston Park Dr., Oakville, ON L6H 6J8
CZECH REPUBLIC • Sigma-Aldrich s.r.o. • Pobrezni 46 • 186 21 Praha 8
DENMARK • Sigma-Aldrich Denmark A/S • Vejlegaardsvej 65B • DK-2665 Vallengbaek Strand
FINLAND • Sigma-Aldrich Finland/YA-Kemia Oy • Teerisuonkuja 4 • FIN-00700 Helsinki
FRANCE • Sigma-Aldrich Chimie • Chromatographie Supelco • L'Isle d'Abeau Chesnes - B.P. 701 • 38297 Saint-Quentin Fallavier Cedex
GERMANY • Sigma-Aldrich Chemie GmbH • Geschäftsbereich Supelco • Grünwalder Weg 30 • D-82041 Deisenhofen
GREECE • Sigma-Aldrich (o.m.) Ltd. • 72 Argonafton Str. • 16346 Ilioupoli, Athens
HUNGARY • Sigma-Aldrich Kft. • Nagy Diófa u. 7., IV fl. • H-1067 Budapest
INDIA • Sigma-Aldrich Co. • Survey No. 31/1, Sitharamapalaya • Mahadevapura P.O. • Bangalore 560 048
IRELAND • Sigma-Aldrich Ireland Ltd. • Airton Road • Tallaght • Dublin 24
ISRAEL • Sigma Israel Chemicals Ltd. • Park Rabin • Rohovot 76100
ITALY • Sigma-Aldrich s.r.l. • Via Gallarate, 154 • 20151 Milano
JAPAN • Sigma-Aldrich Japan K.K. • Division Supelco • JL Nihonbashi Building • 1-10-15 Nihonbashi Horidome-cho, Chuo-ku • Tokyo 103
KOREA • Sigma-Aldrich Korea • Samhan Camus Annex, 10th Floor • 17-26 Yoido-dong, Yungdeungpo-ku • Seoul
MALAYSIA • Sigma-Aldrich (M) Sdn. Bhd. • 9-2, Jalan 2/128, Taman Gembira • Off Jalan Kuchai Lama • 58200 Kuala Lumpur • Selangor
MEXICO • Sigma-Aldrich Quimica S.A. de C.V. • Calle 6 North No. 107 • Parque Industrial Toluca 2000 • 50200 Toluca
NETHERLANDS • Sigma-Aldrich Chemie BV • Postbus 27 • 3330 AA Zwijndrecht
NORWAY • Sigma-Aldrich Norway • Sandakerveien 102 • N-0483 Oslo
POLAND • Sigma-Aldrich Sp. z o.o. • Szelagowska 30 • 61-626 Poznań
PORTUGAL • Sigma-Aldrich Quimica, S.A. • P.O. Box 131 • Sintra 2710
RUSSIA • Sigma-Aldrich Russia • TOO Techmedbiochem • Makarenko Str. 2/21 • Building 1, Flat 22 • Moscow 103062
SINGAPORE • Sigma-Aldrich Pte. Ltd. • 102E Pasir Panjang Road • #08-01 Citilink Warehouse • Singapore 118529
SOUTH AFRICA • Sigma-Aldrich (pty) Ltd. • CNR Kelly & Ackerman Streets • Southern Life Industrial Park Unit • Unit 16/17 • Jet Park 1459
SPAIN • Sigma-Aldrich Quimica, S.A. • Apt. Correos 161 • 28100 Alcobendas, Madrid
SWEDEN • Sigma-Aldrich Sweden AB • Solkraftsvägen 14C • 135 70 Stockholm
SWITZERLAND • Supelco Switzerland • Industriestrasse 25 • P.O. Box 260 • CH-9471 Buchs
UNITED KINGDOM • Sigma-Aldrich Company Ltd. • Supelco UK • Fancy Road, Poole • Dorset BH12 4QH
UNITED STATES • Supelco • Supelco Park • Bellefonte, PA 16823-0048 • Phone 800-247-6628 or 814-359-3441 • Fax 800-447-3044 or 814-359-3044 • email:supelco@sial.com

H

This article is archived from a past issue of The Supelco Reporter. Information in the article was appropriate at the time of publication, but product specifications, catalog numbers, and availability may have changed over time.

If you have questions about applying methodology described in this article to a current application, please contact our technical service chemists.



Supelco is a member of the Sigma-Aldrich family. Supelco products are sold through Sigma-Aldrich, Inc. Sigma-Aldrich warrants that its products conform to the information contained in this and other Sigma-Aldrich publications. Purchaser must determine the suitability of the product for a particular use. Additional terms and conditions may apply. Please see the reverse side of the invoice or packing slip.

Alternatives for Separating Volatile Organic Compounds by Capillary GC

C. Woolley, R. Shirey, J. Desorcie

Using identical analytical conditions, we compared the performance of three 60m x 0.25mm ID capillary columns for separating 60 volatile organic compounds (VOCs) listed in US EPA Method 502.2: an SPB-624 column (1.4µm film), a VOCOL column (1.5µm phase film), and an SPB-Octyl column (1.0µm film). The SPB-624 column provided the highest column efficiency and, except for m- and p-xylene, complete resolution with MS or PID/ELCD detection. The VOCOL column provided the lowest column efficiency and longest retention times, but the fewest coelutions, and near-complete resolution with MS or PID/ELCD detection. The SPB-Octyl column provided high column efficiency and a unique elution order.

Volatile organic compounds (VOCs) are among the most common chemical pollutants tested for in soil, sludge, drinking water, and wastewater, and emphasis currently is being placed on determining and controlling VOC contaminants in outdoor and indoor air (e.g., US Environmental Protection Agency Method TO-14). The great number and chemical diversity of VOCs which can be present in these samples demands capillary GC columns that are capable of separating almost 100 compounds. This high separating power usually is accomplished with long (75 or 105 meters) 0.53mm ID columns, but narrow diameter columns (0.25mm ID) with shorter lengths (30 or 60 meters) also can be effective. Columns with specially developed bonded stationary phases provide the polar, polarizable, and dispersive interactions needed to separate large numbers of VOCs. Columns with different bonded stationary phases also can elute VOCs in different orders, or can separate pairs of VOCs that cannot be separated by other columns.

Using identical analytical conditions, we examined the performance of three 60m x 0.25mm ID capillary columns for separating 60 VOCs listed in US EPA Method 502.2: an SPB™-624 column (1.4µm film), a VOCOL™ column (1.5µm phase film), and an SPB-Octyl column (1.0µm film) (see Figure A). Our findings are summarized here.

SPB-624 Column

The SPB-624 column is a key column for separating VOCs extracted from drinking water, wastewater, indoor or outdoor air, and soil/sludge. SPB-624 columns also are commonly used to separate volatile organic flavor and fragrance additives, and residual solvents in industrial or pharmaceutical products. These columns can be used with purge-and-trap, headspace, or solid phase microextraction (SPME) systems. Under the conditions we used, the SPB-624 column provided the highest column efficiencies and a unique selectivity for certain VOCs that typically coelute on

VOCOL columns (Table 1). Most coeluting VOCs could be resolved by using MS (extracted ions), PID/ELCD, or FTIR. Only m- and p-xylene (35/36) were not resolved.

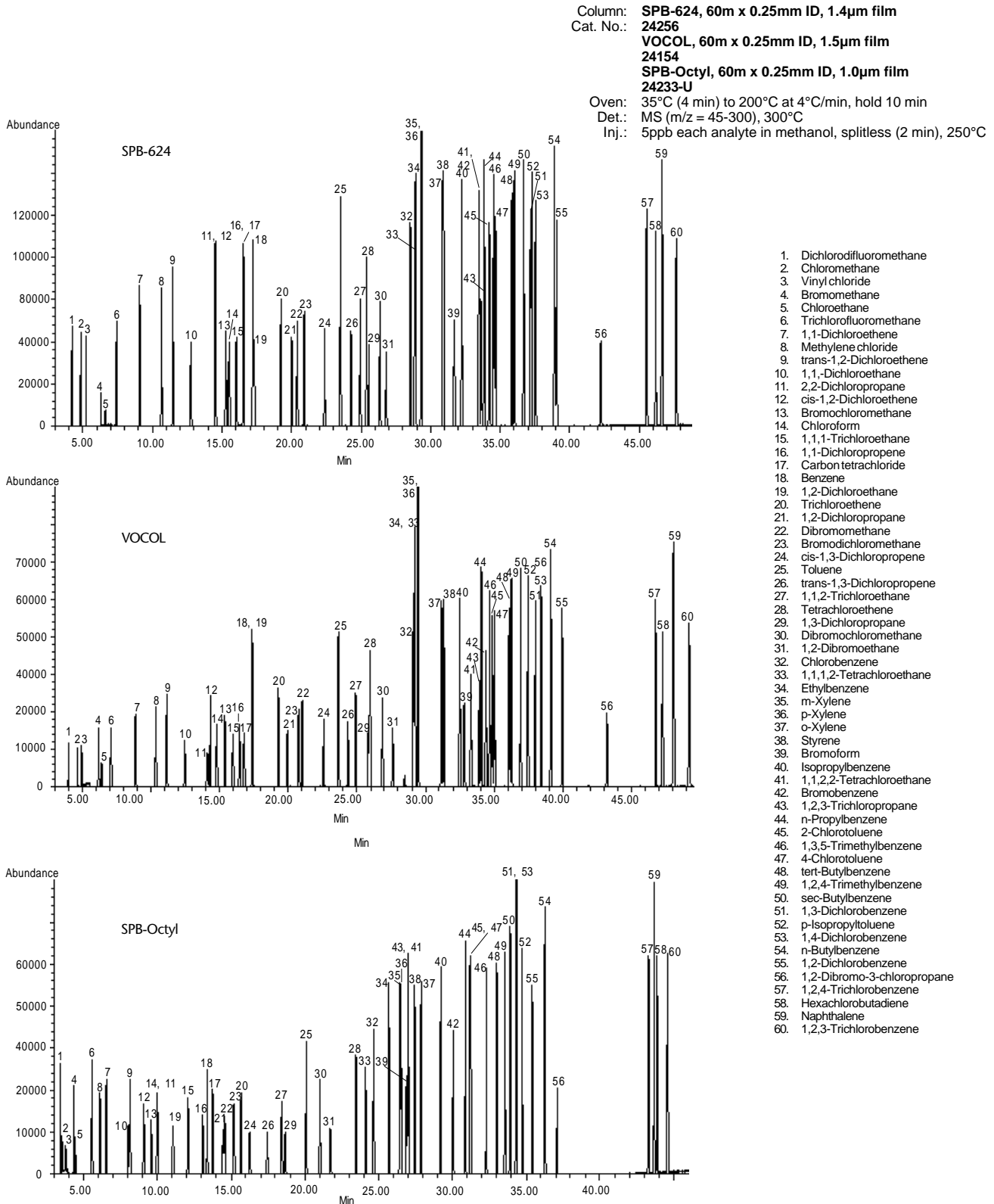
VOCOL Column

The VOCOL column is standard in the industry for separating environmental VOCs. It is widely used in purge-and-trap GC-PID/ELCD and purge-and-trap GC-MS systems, in US EPA Methods 502.2, 524.2, 624, 8020, TO-14, 8260, and CLP-VOA. The VOCOL column provided the lowest Trennzahl values, yet, due to the designed selectivity of the stationary phase, it produced the fewest coelutions (Table 2). The VOCOL column provided superior separation of substituted benzenes (40-55) and of halogenated alkanes and alkenes (11-19). Coeluting VOCs were resolved by using MS, PID/ELCD, or FTIR, again with the exception of m- and p-xylene. Relative to SPB-624, the VOCOL column reversed the elution order for a few compounds (Table 2), because the VOCOL column's higher mean polarity creates a stronger interaction with the longer retained VOCs.

Table 1. Column Performance: SPB-624 Column

Trennzahl Values (Separation Numbers)		
between vinyl chloride (3) and tetrachloroethene (28)		211
between chlorobenzene (32) and 1,2,3-trichlorobenzene (60)		204
Unique Separations		
tetrachloroethene/1,3-dichloropropane (28/29)		
chlorobenzene/1,1,1,2-tetrachloroethane - ethylbenzene (32/33-34)		
VOCs Resolved by Selective Detection	MS	PID/ELCD
Coeluting		
2,2-dichloropropane/cis-1,2-dichloroethene (11 / 12)	yes	yes
1,1-dichloropropene/carbon tetrachloride (16/17)	yes	yes
m-xylene / p-xylene (35/36)	no	no
1,1,2,2-tetrachloroethane and bromobenzene (41/42)	yes	yes
Partially Coeluting		
benzene/1,2-dichloroethane (18/19)	yes	yes
1,1,1,2-tetrachloroethane/ethylbenzene (33/34)	yes	yes
o-xylene/styrene (37/38)	yes	no
1,3-dichlorobenzene/p-isopropyltoluene (51/52)	yes	yes

Figure A. Volatile Organic Compounds on Three Capillary Columns (VOCs Listed in US EPA Method 502.2)



795-0459, 0465, 0462

SPB-Octyl Column

The SPB-Octyl column (50% n-octyl/50% methyl polysiloxane phase) was designed for detailed separations of petroleum hydrocarbons and PCB congeners. The bonded phase is less polar than polydimethylsiloxane (e.g., SPB-1) and is only slightly more polar than the totally hydrocarbon nonbonded phase, squalane. The column provides high theoretical plates, even at subzero temperatures, and increases the retention of halogenated aromatics and alkenes (Table 3). Relative to VOCOL and SPB-624 columns, the SPB-Octyl column greatly shifted the elution order for many VOCs (Table 3). It was the only column to separate m- and p-xylene (Figure A).

Table 2. Column Performance: VOCOL Column

Trennzahl Values (Separation Numbers)		
between vinyl chloride (3) and tetrachloroethene (28)		197
between chlorobenzene (32) and 1,2,3-trichlorobenzene (60)		130
Unique Separations		
2,2-dichloropropane/cis-1,2-dichloroethene (11/12)		
1,1-dichloropropene/carbon tetrachloride (16/17)		
o-xylene / styrene (37/38)		
1,1,2,2-tetrachloroethane/bromobenzene (41/42)		
p-isopropyltoluene/1,3-dichlorobenzene (52/51)		
(elution order reversed, relative to SPB-624)		
VOCs Resolved by Selective Detection	MS	PID/ELCD
Coeluting		
benzene/1,2-dichloroethane (18/19)	yes	yes
1,1,1,2-tetrachloroethane/ethylbenzene (33/34)	yes	yes
m-xylene/p-xylene (35/36)	no	no
Partially Coeluting		
tetrachloroethene/1,3-dichloropropane (28/29)	yes	yes
chlorobenzene/1,1,1,2-tetrachloroethane - ethylbenzene (32 / 33-34)	yes	no
Elution Order Reversed, Relative to SPB-624		
chloroform / bromochloromethane (14/13)		
bromodichloromethane / dibromomethane (23/22)		
isopropylbenzene/bromoform (40/39)		
p-isopropyltoluene/1,3-dichlorobenzene (52/51)		

Based on this study, we concluded that the SPB-624 column provided the highest column efficiency (Trennzahl values), the most coelutions, and near-complete resolution with MS or PID/ELCD detection. The VOCOL column provided the lowest column efficiency and longest retention times, but the fewest coelutions, and near-complete resolution with MS or PID/ELCD detection. The SPB-Octyl column provided high column efficiency and a unique elution order. m-Xylene and p-xylene were resolved, but 2-chlorotoluene/4-chlorotoluene and 1,4-dichlorobenzene/1,3-dichlorobenzene were not resolved. One of these three columns should prove ideal for almost any analysis of these and other VOCs.

Table 3. Column Performance: SPB-Octyl Column

Trennzahl Values (Separation Numbers)		
between vinyl chloride (3) and tetrachloroethene (28)		200
between chlorobenzene (32) and 1,2,3-trichlorobenzene (60)		165
Unique Separations		
m-xylene / p-xylene (35/36)		
1,2,3-trichloropropane/n-propylbenzene (43/44)		
1,1,1,2-tetrachloroethane/chlorobenzene - ethylbenzene (33/32-34)		
High Resolution and Reversed Elution Order, Relative to SPB-624 and VOCOL		
cis-1,2-dichloroethene/2,2-dichloropropane (12/11)		
1,2-dichloroethane/benzene (19/18)		
1,3-dichloropropane/tetrachloroethene (29/28)		
styrene/o-xylene (38/37)		
VOCs Resolved by Selective Detection	MS	PID/ELCD
Coeluting		
chloroform/2,2-dichloropropane (14/11)	yes	no
1,2,3-trichloropropane/1,1,2,2-tetrachloroethane (43/41)	yes	no
2-chlorotoluene/4-chlorotoluene (45/47)	no	no
1,3-dichlorobenzene/1,4-dichlorobenzene (51/53)	no	no
Partially Coeluting		
1,1-dichloroethane/trans-1,2-dichloroethene (10/9)	yes	yes
1,2-dichloropropane/dibromomethane (21/22)	yes	no
bromoform/trichloropropane - 1,1,2,2-tetrachloroethane (39/43-41)	yes	no
Elution Order Reversed, Relative to SPB-624 and VOCOL		
8/7, 10/9, 13/12, 18/17, 33/32, 38/37, 55/54, 59/58		
Elution Greatly Reduced		
19, 39, 43, 41		
Elution Greatly Increased		
20, 25, 28		

Ordering Information:

Description	Cat. No.
SPB-624 Capillary Column 60m x 0.25mm ID, 1.4µm film	24256
VOCOL Capillary Column 60m x 0.25mm ID, 1.5µm film	24154
SPB-Octyl Capillary Column 60m x 0.25mm ID, 1.0µm film	24233-U
EPA 524.2 VOC Mix 200µg/mL each analyte in 1mL methanol	47932

SPB and VOCOL are trademarks of Sigma-Aldrich Co.