



## Solvents

# Fast analysis of ethanol presence in bottles

## Application Note

Environmental

### Authors

Agilent Technologies, Inc.

### Introduction

Gas chromatography with the Agilent 490 Micro GC and an Agilent PoraPLOT Q column checks calibration bottles for the presence of residual solvent in 65 seconds.

Calibration bottles have to be checked for the presence of residual solvent. A fast method is required to do this.



**Agilent Technologies**

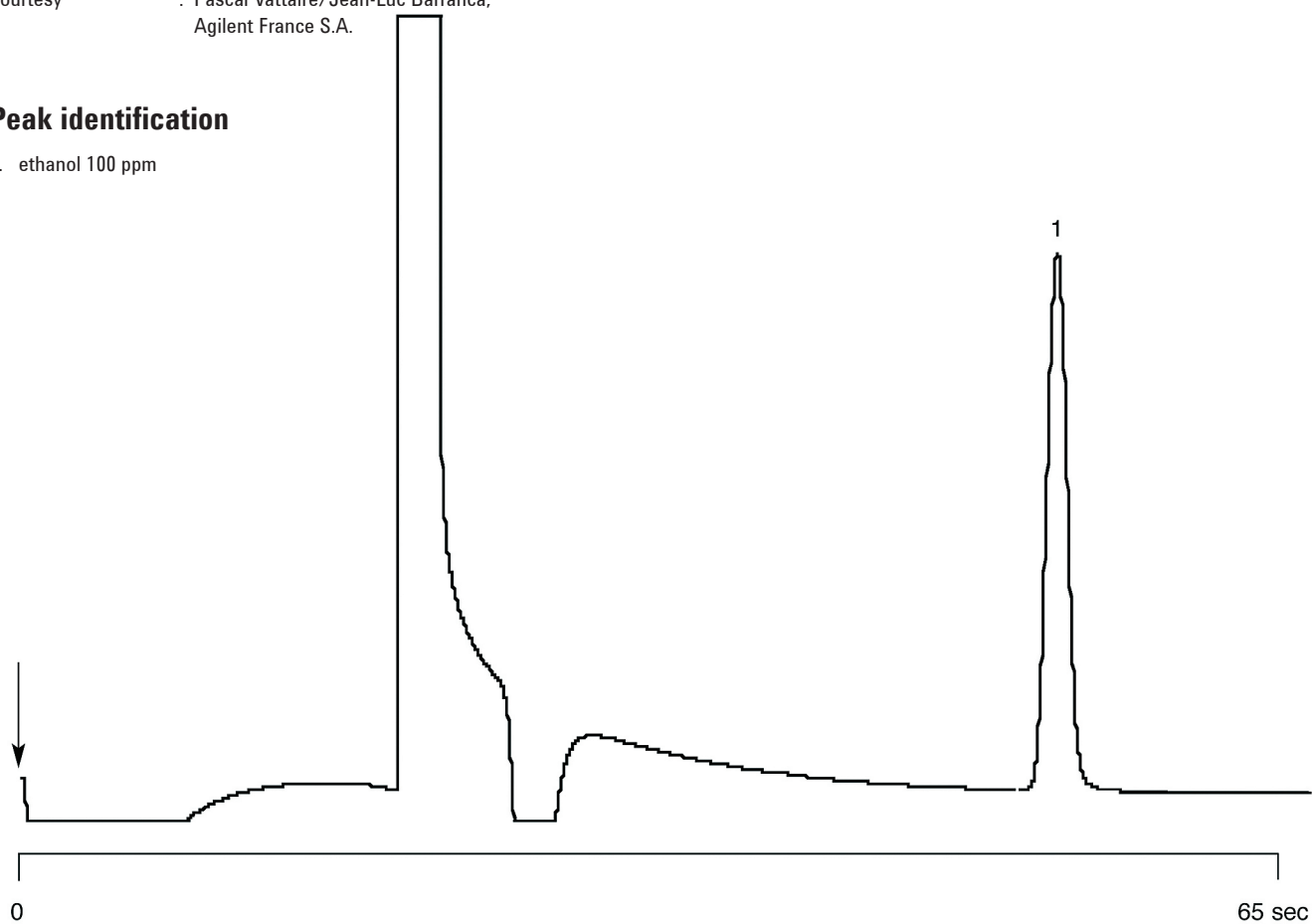
## Conditions

Technique : Micro-GC  
Column : Agilent PoraPLOT Q, 0.25 mm x 10 m PLOT  
(Part no. CP738050)  
Temperature : 130 °C  
Carrier Gas : He, 150 kPa (1.5 bar, 21 psi)  
Pressure Program : no  
Heated Injector : yes  
Injection Time : 255 msec  
Concentration Range : 100 ppm

Courtesy : Pascal Vattaire/Jean-Luc Barranca,  
Agilent France S.A.

## Peak identification

1. ethanol 100 ppm



[www.agilent.com/chem](http://www.agilent.com/chem)

This information is subject to change without notice.

© Agilent Technologies, Inc. 2011

Printed in the USA

31 October, 2011

First published prior to 11 May, 2010

A01620



**Agilent Technologies**