

Gases

Gas analysis in nuclear power plant

Application Note

Environmental

Authors

Agilent Technologies, Inc.

Introduction

The environment of the reactor in a nuclear power plant must be checked for the presence of different gases. It is important is to have a portable system with sufficient sensitivity and separation power, such as the Agilent 490 Micro GC with an Agilent CP-Molsieve 5Å column.



Agilent Technologies

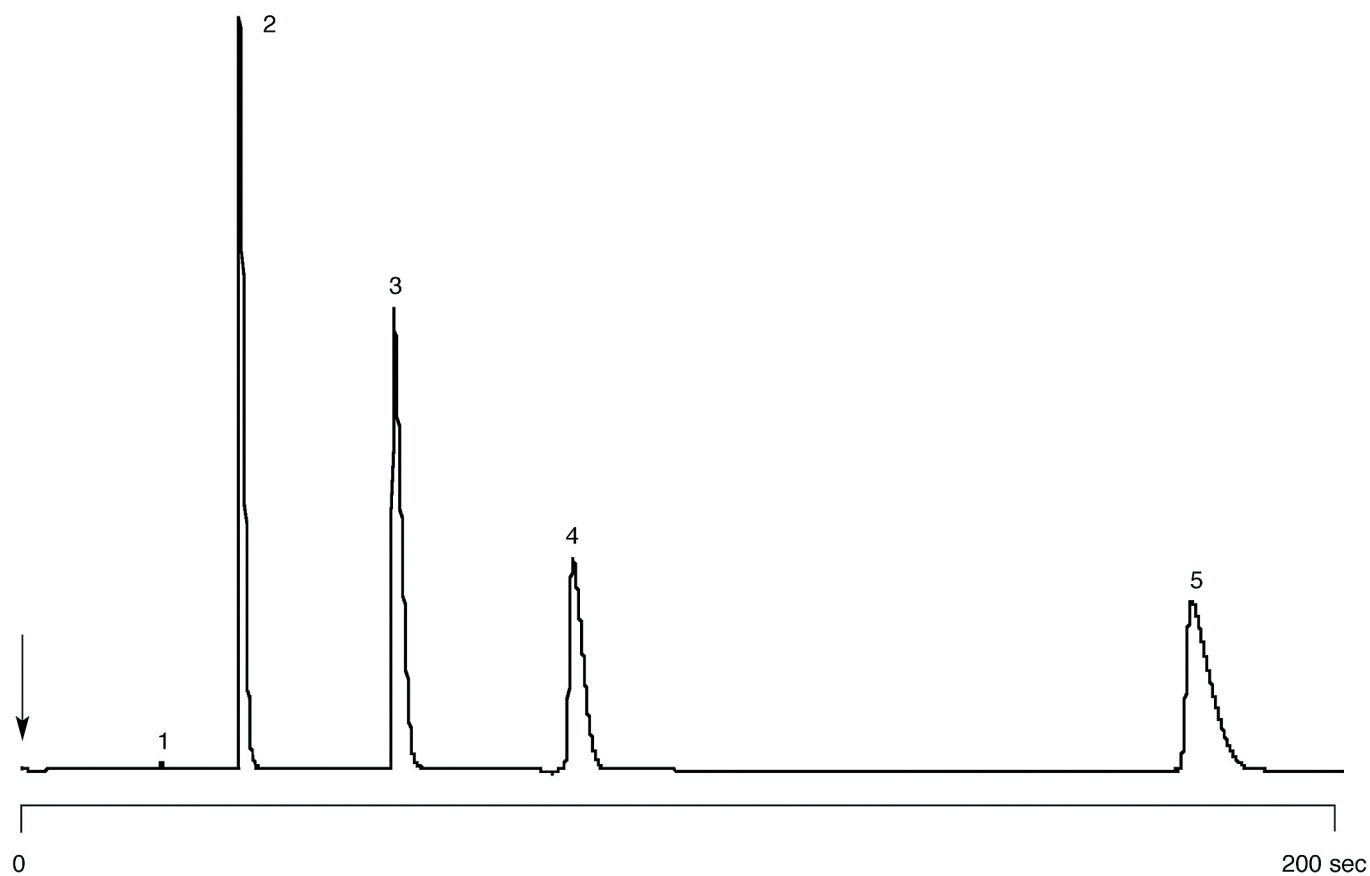
Conditions

Technique : Micro-GC
Column : Agilent PoraPLOT Q, 0.25 mm x 10 m PLOT
(Part no. CP737057)
Temperature : 50 °C
Carrier Gas : He, 100 kPa (1.0 bar, 14 psi)
Pressure program : no
Heated injector : no
Injection time. : 100 msec
Concentration range : 5%
Matrix : N₂

Courtesy : Pascal Vattaire/Jean-Luc Barranca, Agilent France S.A.

Peak identification

1. hydrogen
2. oxygen
3. nitrogen
4. methane
5. carbon monoxide



www.agilent.com/chem

This information is subject to change without notice.

© Agilent Technologies, Inc. 2011

Printed in the USA

31 October, 2011

First published prior to 11 May, 2010

A01621



Agilent Technologies