



Halogenated pesticides

Application Note

Environmental

Authors

Agilent Technologies, Inc.

Introduction

GC Analysis of halogenated pesticides uses direct injection and the stabilized 50% phenyl PDMS of an Agilent VF-17ms column.



Agilent Technologies

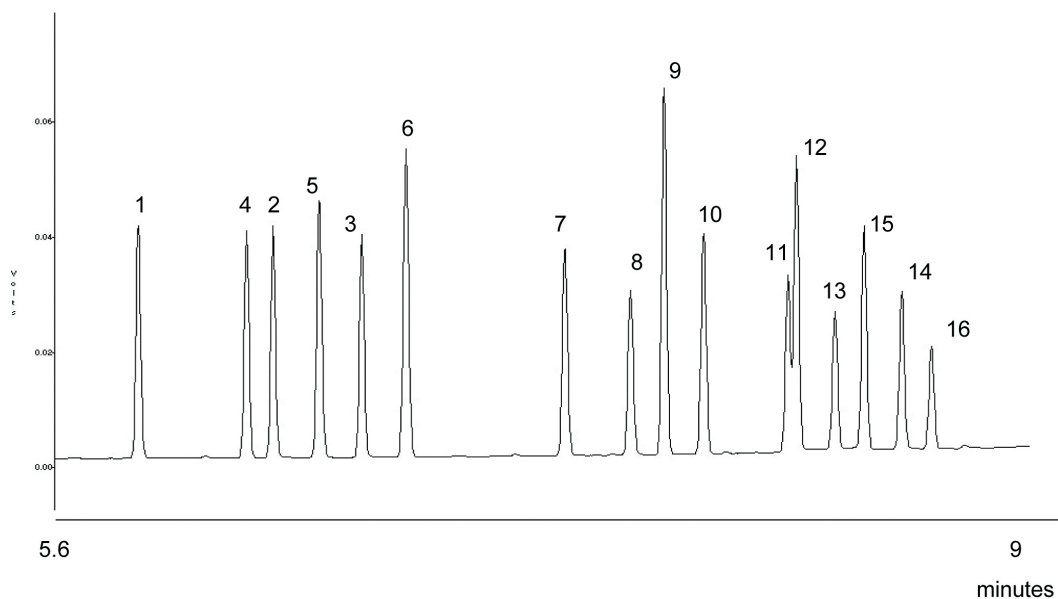
Conditions

Technique : GC
Column : Agilent VF-17ms, 0.53 mm x 30 m fused silica
(df = 0.50 μ m) (Part No. CP9000)
Temperature : 100 °C + 25 °C/min \rightarrow 300 °C
Carrier Gas : Helium, 50 kPa
Injector : Direct injection, T = 250 °C
Detector : FID
Sample Size : 0.2 μ L
Concentration Range : 20 - 200 ug/mL

Courtesy : J. Peene, Agilent application laboratory,
Middelburg, The Netherlands

Peak identification

1. α -BHC
2. β -BHC
3. delta-BHC
4. gamma-BHC (lindane)
5. Heptachlor
6. Aldrin
7. Heptachlorepoxyde
8. Endosulfan I
9. 4,4'-DDE
10. Dieldrin
11. Endrin
12. 4,4'-DDD
13. Endosulfan II
14. Endrin aldehyde
15. 4,4'-DDT
16. Endosulfan sulfate



www.agilent.com/chem

This information is subject to change without notice.

© Agilent Technologies, Inc. 2011

Printed in the USA

31 October, 2011

First published prior to 11 May, 2010

A02297



Agilent Technologies