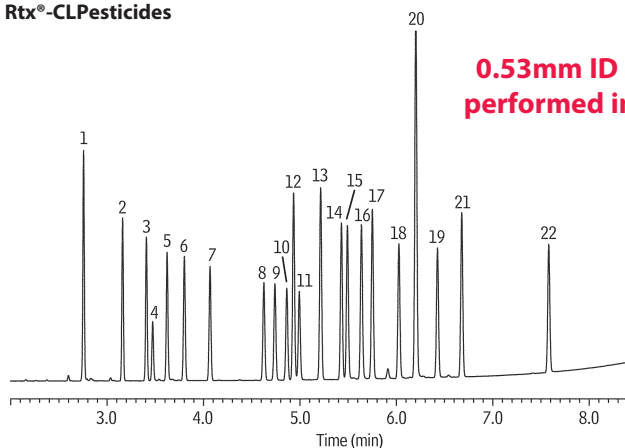
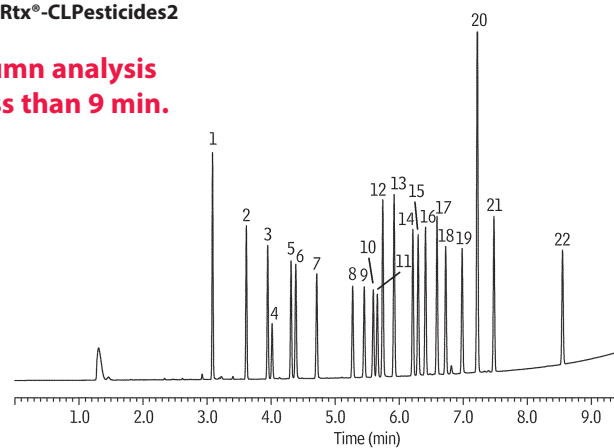


**Organochlorine Pesticide Mix AB #2 US EPA Method 8081  
Rtx®-CLPesticides and Rtx®-CLPesticides2 (0.53mm ID Column Set)**

Rtx®-CLPesticides



Rtx®-CLPesticides2



**0.53mm ID column analysis  
performed in less than 9 min.**

**Columns**

Rtx®-CLPesticides 30 m, 0.53 mm ID, 0.50 µm (cat.# 11140)  
and Rtx®-CLPesticides2 30 m, 0.53 mm ID, 0.42 µm (cat.# 11340)  
using Rxi® guard column 5 m, 0.53 mm ID (cat.# 10054)  
with Siltek®-treated universal "Y" Press-Tight® connector (cat.# 20486)

**Sample**

Organochlorine pesticide mix AB #2 (cat.# 32292)  
Pesticide surrogate mix, EPA 8080, 8081 (cat.# 32000)

**Injection**

Inj. Vol.: 1.0 µL splitless (hold 0.3 min)  
Liner: Splitless taper (4 mm) (cat.# 20799)  
Inj. Temp.: 250 °C

**Oven**

Oven Temp.: 120 °C to 200 °C at 45 °C/min to 230 °C at 12.5 °C/min to 325 °C at 30 °C/min (hold 2 min)

**Carrier Gas**

He, constant linear velocity

Linear Velocity: 45 cm/sec @ 120 °C

**Detector**

µ-ECD @ 330 °C

**Notes**

This chromatogram was obtained using an Agilent µ-ECD. To obtain comparable results, you will need to

employ a µ-ECD in addition to dual columns connected to a 5-meter guard column using a "Y" Press-Tight®

connector.

**Peaks**

1. 2,4,5,6-Tetrachloro-m-xylene (SS)
2. α-BHC
3. γ-BHC
4. β-BHC
5. δ-BHC
6. Heptachlor
7. Aldrin
8. Heptachlor epoxide (isomer B)
9. *trans*-Chlordane\*
10. *cis*-Chlordane\*
11. Endosulfan I

**Peaks**

12. 4,4'-DDE
13. Dieldrin
14. Endrin
15. 4,4'-DDD
16. Endosulfan II
17. 4,4'-DDT
18. Endrin aldehyde
19. Endosulfan sulfate
20. Methoxychlor
21. Endrin ketone
22. Decachlorobiphenyl (SS)

\* For information regarding the nomenclature used for *cis*-chlordane and *trans*-chlordane, visit [www.restek.com/chlordane-notice](http://www.restek.com/chlordane-notice)