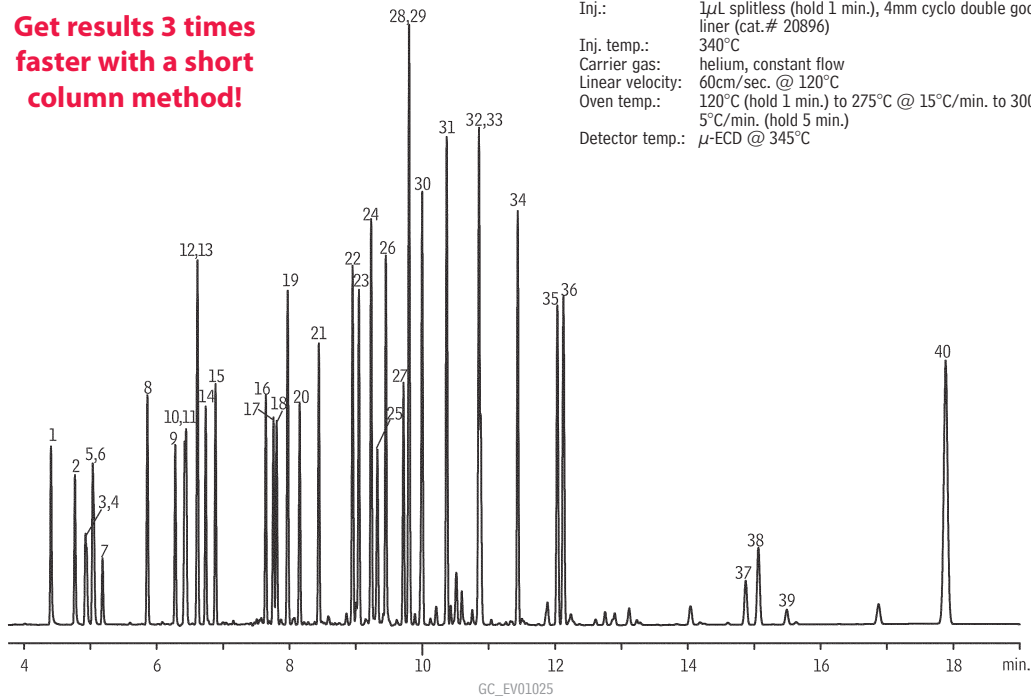


# Brominated Flame Retardants Rtx®-1614

Get results 3 times  
faster with a short  
column method!



Column: Rtx®-1614, 15m, 0.25mm ID, 0.10 $\mu$ m (cat.# 10295)  
Sample: 100-300ppb PBDE PAR Solution (cat.# EO-5113, Cambridge Isotope Laboratories Inc.), 500ppb decabromodiphenyl ether (cat.# BDE-209, Wellington Laboratories)  
Inj.: 1 $\mu$ L splitless (hold 1 min.), 4mm cyclo double gooseneck liner (cat.# 20896)  
Inj. temp.: 340°C  
Carrier gas: helium, constant flow  
Linear velocity: 60cm/sec. @ 120°C  
Oven temp.: 120°C (hold 1 min.) to 275°C @ 15°C/min. to 300°C @ 5°C/min. (hold 5 min.)  
Detector temp.:  $\mu$ -ECD @ 345°C

1. BDE-10
2. BDE-7
3. BDE-8
4. BDE-11
5. BDE-12
6. BDE-13
7. BDE-15
8. BDE-30
9. BDE-32
10. BDE-17
11. BDE-25
12. BDE-28
13. BDE-33
14. BDE-35
15. BDE-37
16. BDE-75
17. BDE-49
18. BDE-71
19. BDE-47
20. BDE-66
21. BDE-77
22. BDE-100
23. BDE-119
24. BDE-99
25. BDE-116
26. BDE-118
27. BDE-85
28. BDE-155
29. BDE-126
30. BDE-154
31. BDE-153
32. BDE-138
33. BDE-166
34. BDE-183
35. BDE-181
36. BDE-190
37. BDE-208
38. BDE-207
39. BDE-206
40. BDE-209