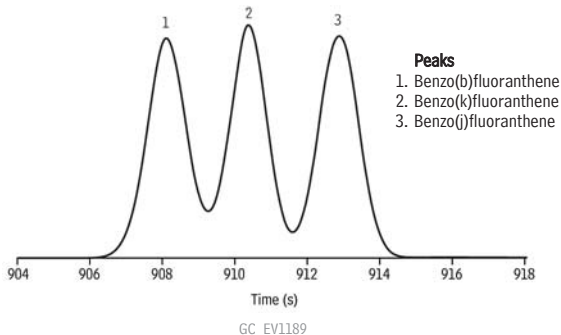


# Benzofluoranthenes on Rxi®-17Sil MS (15m x 0.25mm x 0.25µm)



<b>Column</b>	Rxi®-17Sil MS, 15 m, 0.25 mm ID, 0.25 µm (cat.# 14120)
<b>Sample</b>	
Diluent:	Methylene chloride
Conc.:	20 ng/µL
<b>Injection</b>	
Inj. Vol.:	1 µL split (split ratio 20:1)
Liner:	4mm Split Precision® Liner w/Wool (cat.# 21022)
Inj. Temp.:	275 °C
Split Vent	
Flow Rate:	42 mL/min.
<b>Oven</b>	
Oven Temp:	80 °C (hold 1 min.) to 320 °C at 15 °C/min. (hold 2 min.)
<b>Carrier Gas</b>	H <sub>2</sub> , constant flow
Flow Rate:	2 mL/min.
<b>Detector</b>	FID @ 340 °C
Constant Column +	
Constant Make-up:	50 mL/min.
Make-up	
Gas Type:	N <sub>2</sub>
Data Rate:	20 Hz
<b>Instrument</b>	Agilent/HP6890 GC