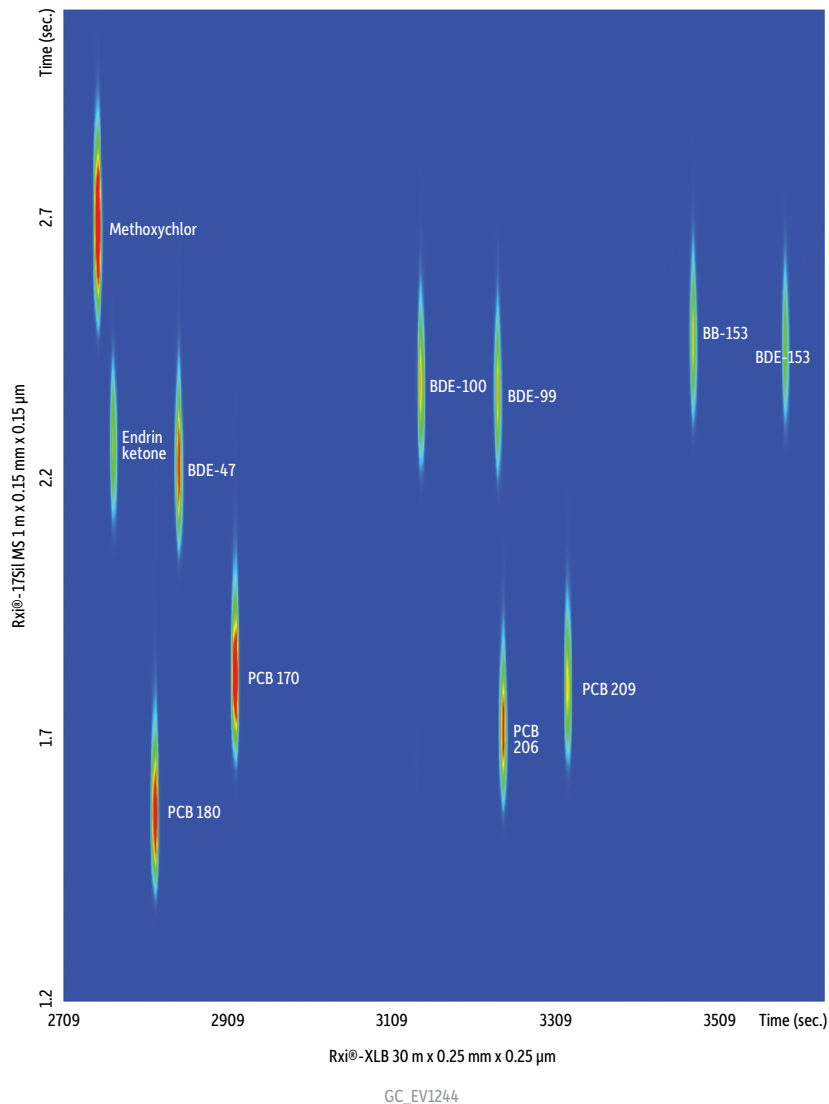


Organochlorine Pesticides, PCBs, and BFRs on Rxi®-XLB and Rxi®-17Sil MS (GCxGC-ECD) zoom



Column	Rxi®-XLB 30 m, 0.25 mm ID, 0.25 µm (cat.# 13723) Rxi®-17Sil MS 1 m, 0.15 mm ID, 0.15 µm (cat.# 43820) with IP deactivated guard column 0.2 m, 0.15 mm ID	Carrier Gas	He, corrected constant flow (2.0 mL/min.)
Sample	PBDE mix (cat.# 33098) PCB congener mix, Method 8082A (cat.# 32416) Organochlorine pesticide mix AB #1 (cat.# 32291)	Modulation	
Diluent:	Isooctane	Modulator Temp.	20 °C
Conc.:	250 µg/µL	Offset:	20 °C
Injection		Second Dimension	
Inj. Vol.:	1.0 µL splitless (hold 1.0 min.)	Separation Time:	3.5 sec.
Liner:	Premium 4 mm single taper inlet liner w/wool (cat.# 23303.5)	Hot Pulse Time:	1.25 sec.
Inj. Temp.:	250 °C	Cool Time	
Purge Flow:	20 mL/min.	between Stages:	0.50 sec.
Oven		Detector	µ-ECD @ 325 °C
Oven Temp:	Rxi®-XLB: 80 °C (hold 1 min.) to 120 °C at 10 °C/min. to 300 °C at 3 °C/min. Rxi®-17Sil MS: 85 °C (hold 1 min.) to 125 °C at 10 °C/min. to 305 °C at 3 °C/min.	Data Rate:	50 Hz
		Instrument	Agilent/HP6890 GC
		Notes	The Rxi®-17Sil MS column (cat.# 43820) is a 10 m column. A 1 m section was used as a second dimension column. Guard column was used as transfer line from second dimension column to detector and connected using a Siltek® treated universal Press-Tight® connector (cat.# 20480).