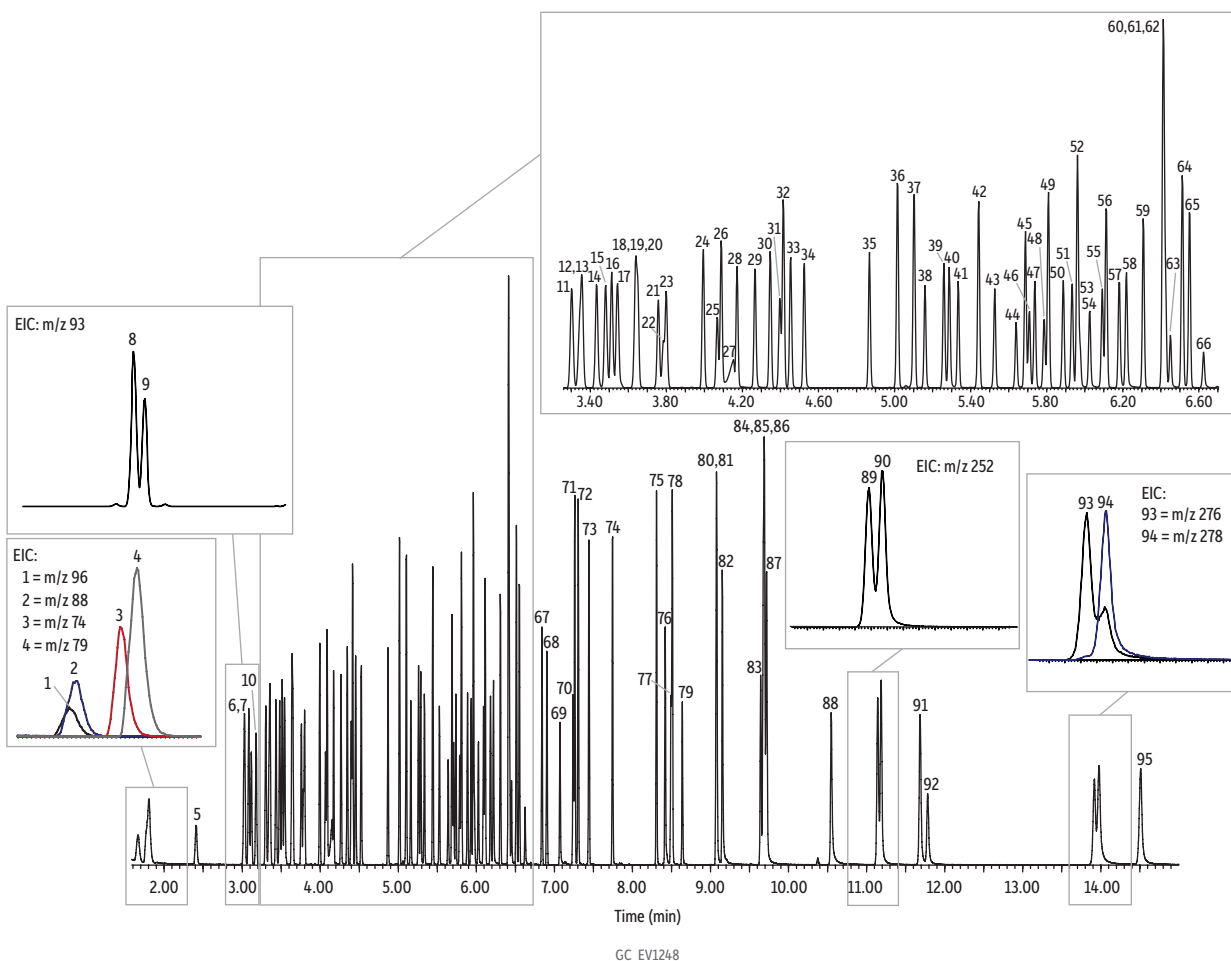


# Semivolatiles on Rxi-5Sil MS by U.S. EPA Method 8270 (Split Injection)

Peaks				
1. 1,4-Dioxane-d8 (IS)	20. N-Nitroso-di-n-propylamine	40. 2,4,5-Trichlorophenol	60. 4-Chlorophenyl phenyl ether	80. 3,3'-Dimethylbenzidine
2. 1,4-Dioxane	21. Hexachloroethane	41. 2-Fluorobiphenyl (SS)	61. Fluorene	81. Butyl benzyl phthalate
3. N-Nitrosodimethylamine	22. Nitrobenzene-D5 (SS)	42. 2-Chloronaphthalene	62. 4-Nitroaniline	82. Bis(2-ethylhexyl)adipate
4. Pyridine	23. Nitrobenzene	43. 2-Nitroaniline	63. 4,6-Dinitro-2-methylphenol	83. 3,3'-Dichlorobenzidine
5. 2-Fluorophenol (SS)	24. Isophorone	44. 1,4-Dinitrobenzene	64. N-nitrosodiphenylamine	84. Benz[a]anthracene
6. Phenol-d6 (SS)	25. 2-Nitrophenol	45. Dimethyl phthalate	65. 1,2-Diphenylhydrazine	85. Chrysene-D12 (IS)
7. Phenol	26. 2,4-Dimethylphenol	46. 1,3-Dinitrobenzene	66. 2,4,6-Tribromophenol (SS)	86. Bis(2-ethylhexyl)phthalate
8. Aniline	27. Benzoic acid	47. 2,6-Dinitrotoluene	67. 4-Bromophenyl phenyl ether	87. Chrysene
9. Bis(2-chloroethyl)ether	28. Bis(2-chloroethoxy)methane	48. 1,2-Dinitrobenzene	68. Hexachlorobenzene	88. Di-n-octyl phthalate
10. 2-Chlorophenol	29. 2,4-Dichlorophenol	49. Acenaphthylene	69. Pentachlorophenol	89. Benzo[b]fluoranthene
11. 1,3-Dichlorobenzene	30. 1,2,4-Trichlorobenzene	50. 3-Nitroaniline	70. Phenanthrene-D10 (IS)	90. Benzo[k]fluoranthene
12. 1,4-Dichlorobenzene-D4 (IS)	31. Naphthalene-D8 (IS)	51. Acenaphthene-d10 (IS)	71. Phenanthrene	91. Benzo[a]pyrene
13. 1,4-Dichlorobenzene	32. Naphthalene	52. Acenaphthene	72. Anthracene	92. Perylene-D12 (IS)
14. Benzyl alcohol	33. 4-Chloroaniline	53. 2,4-Dinitrophenol	73. Carbazole	93. Indeno[1,2,3-cd]pyrene
15. 1,2-Dichlorobenzene	34. Hexachlorobutadiene	54. 4-Nitrophenol	74. di-n-Butyl phthalate	94. Dibenz[a,h]anthracene
16. 2-Methylphenol	35. 4-Chloro-3-methylphenol	55. 2,4-Dinitrotoluene	75. Fluoranthene	95. Benzo[ghi]perylene
17. Bis(2-chloroisopropyl)ether	36. 2-Methylnaphthalene	56. Dibenzofuran	76. Benzidine	
18. 4-Methylphenol	37. 1-Methylnaphthalene	57. 2,3,5,6-Tetrachlorophenol	77. Pyrene-D10 (SS)	
19. 3-Methylphenol	38. Hexachlorocyclopentadiene	58. 2,3,4,6-Tetrachlorophenol	78. Pyrene	
	39. 2,4,6-Trichlorophenol	59. Diethyl phthalate	79. p-Terphenyl-d14 (SS)	



**Column Sample**  
 Rxi-5Sil MS, 30 m, 0.25 mm ID, 0.25 µm (cat.# 13623)  
 8270 MegaMix (cat.# 31850)  
 8270 Benzidines mix (cat.# 31852)  
 Benzoic acid (cat.# 31879)  
 1,4-Dioxane (cat.# 31853)  
 Revised B/N surrogate mix (cat.# 31888)  
 Acid surrogate mix (4/89 SOW) (cat.# 31063)  
 Revised SV internal standard mix (cat.# 31886)  
 Methylene chloride  
 40 µg/mL (IS/SS 20 µg/mL)

**Injection**  
 Inj. Vol.: 1 µL split (split ratio 10:1)  
 Liner: Premium 4 mm Precision liner w/wool (cat.# 23305.5)  
 Inj. Temp.: 270 °C  
 Split Vent  
 Flow Rate: 12 mL/min

**Oven**  
 Oven Temp.: 70 °C (hold 1 min) to 285 °C at 28 °C/min to 305 °C at 3 °C/min to 320 °C at 30 °C/min (hold 1 min)  
 He, constant flow

**Carrier Gas**  
 Flow Rate: 1.2 mL/min

**Detector Mode:**  
 MS Scan

**Transfer Line**  
 Temp.: 280 °C

**Analyzer Type:** Quadrupole  
**Source Temp.:** 270 °C  
**Quad Temp.:** 150 °C  
**Electron Energy:** 70 eV  
**Solvent Delay**  
 Time: 1.3 min  
 DFTPP

**Tune Type:** DFTPP  
**Ionization Mode:** EI  
**Scan Range:** 35-550 amu  
**Scan Rate:** 5.36 scans/sec  
**Instrument** Agilent 7890A GC & 5975C MSD