

EPA 522 Analyte Mix on Rxi®-624Sil MS (30 m x 0.25 mm x 1.4 µm)

Peaks	RT (min.)
1. Tetrahydrofuran-D8	5.27
2. 1,4-Dioxane-d8	6.19
3. 1,4-Dioxane	6.23

Column Rxi®-624Sil MS, 30 m, 0.25 mm ID, 1.40 µm (cat.# 13868) using Rxi® guard column 5 m, 0.25 mm ID (cat.# 10029) with Universal Angled Press-Tight® connectors (cat.# 20446-261)

Sample Tetrahydrofuran-d8 (cat.# 30112), 1,4-Dioxane-d8 (cat.# 30614) 1,4-Dioxane (cat.# 30287)

Diluent: Dichloromethane
Conc.: 50 ng/mL
Injection
Inj. Vol.: 10 µL splitless (hold 1 min.)
Liner: Premium 4 mm single taper/gooseneck w/wool (cat.# 23303.5)
Inj. Temp.: 120 °C
Purge Flow: 80 mL/min.

Oven
Oven Temp.: 35 °C (hold 1 min.) to 120 °C at 12 °C/min. (hold 1 min.)

Carrier Gas
Flow Rate: 1.4 mL/min.
Linear Velocity: 30.556 cm/sec. @ 35 °C

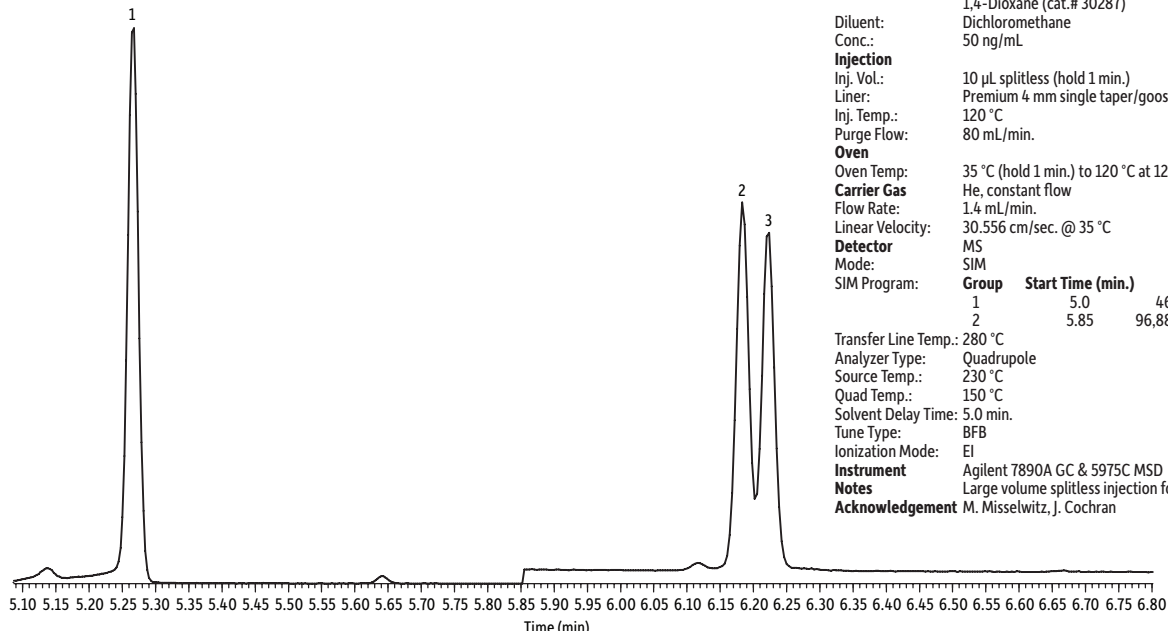
Detector
Mode: SIM
SIM Program:

Group	Start Time (min.)	Ion(s)	Dwell (ms)
1	5.0	46,78,80 m/z	50
2	5.85	96,88,64,62,58 m/z	40

Transfer Line Temp.: 280 °C
Analyzer Type: Quadrupole
Source Temp.: 230 °C
Quad Temp.: 150 °C
Solvent Delay Time: 5.0 min.
Tune Type: BFB
Ionization Mode: EI

Instrument Agilent 7890A GC & 5975C MSD
Notes Large volume splitless injection for EPA Method 522 without a PTV.

Acknowledgement M. Misselwitz, J. Cochran



GC_EV1251